

The Smithfield Herald

Johnston County's Oldest and Best Newspaper -- Established 1882

For Smithfield

"One thing at a time and that done well
Is a very good rule as man can tell."
In '29 let's concentrate
On a hotel, new and up-to-date.

If You Want Results

The difference between the Ordinary and the Extraordinary is only a few cents. Your Advertising deserves to bring Results. Try the Herald columns.

47TH YEAR

THE HOME NEWSPAPER

SMITHFIELD, N. C., TUESDAY MORNING, MARCH 5, 1929

EIGHT PAGES TODAY

NUMBER 20

March Term Of Criminal Court

Judge Sinclair Will Preside Over Superior Court Which Convenes Here Next Monday; Calendar Not Yet Set

A letter from the Governor's office has been received by the clerk of the Superior court in which it is stated that the March term of court which convenes here next Monday will not be presided over by Judge Midyette, who is the judge regularly scheduled to hold this court, but will be held by Judge N. A. Sinclair, of Fayetteville. While Judge Sinclair will be held holding a court for Judge Midyette, Judge Midyette will have charge of one of Judge Sinclair's courts in Durham.

The March term is for the trial of criminal actions, and it is reported that the trial docket contains a very large number of pending cases. The calendar for this term has not yet been set but it is generally thought that one of the cases to be tried will be that of State vs. Ausley Pilkington, Paul Pilkington and James Narron, each of whom is implicated with the killing of Everette Eason, which occurred near Smithfield in the early part of May of last year.

Judge Sinclair has held courts of this county prior to this term, and he is generally regarded here as one of the ablest judges who ride this district.

The jury list for this term of court is as follows:

Malton Baker, Boon Hill; E. B. Draughton, Beulah; E. B. Johnson, Ingrams; Paul Webb, Banner; B. G. McGee, Pleasant Grove; D. S. Jones, Smithfield; R. A. Beasley, Banner; J. D. Williams, Boon Hill; R. L. Hill, Boon Hill; W. G. Hales, Beulah; M. D. Croffker, Pine Level; J. Q. R. - Jeffries, Selma; Will Creech, Selma; A. R. Radford, Beulah; J. R. Oliver, Pleasant Grove; Elbert Johnson, Ingrams; M. F. Denning, Meadow; W. H. Creech, Micro; W. H. Call, Selma; Henry A. Crumpler, Smithfield; J. R. Barbour, Elevation; D. M. Price, Clayton; C. L. Whitely, Smithfield; W. D. Edwards, O'Neal; J. I. Adams, Wilson's Mills; L. C. Baker, Smithfield; H. W. Talton, Smithfield; Seth Keen, Ingrams; J. W. Wellons, Micro; J. H. Franks, Cleveland; Arthur Johnson, Smithfield; J. S. Eason, O'Neal; Stephen Wall, Wilders; Vine Edwards, Boon Hill; C. A. Smith, Clayton; and R. J. Godwin, Pleasant Grove.

Visit Mrs. Wallace Here

Misses Annie Wallace and Julia Johnson, of the Pisgah section, spent the week end here with Mrs. R. I. Wallace.

Leave for Chattanooga

Dr. and Mrs. C. La Lassiter and little son, Lawrence, who have been spending some time with relatives near town, left Saturday for Chattanooga, Tenn., where they will make their home. Dr. Lassiter who was formerly located at Fremont, recently completed a year's course in eye, ear, nose and throat at New York Post Graduate School of Medicine, New York City.

Attend President's Inauguration

Among the county officers who left here Saturday for Washington, D. C., to attend the inauguration of President Hoover were: Miss Luma McLamb, registrar of deeds; Mr. R. L. Fitzgerald, auditor; and Mr. S. W. Brown, treasurer.

Tantalizer

There are exactly enough letters in the line below to spell the name of a person in Smithfield or Johnston County, and to the one deciphering their name and presenting a copy of this paper to the Herald office, we will present a free ticket to the Victory Theatre. Tickets must be called for before the following issue.

A. N. Biggs deciphered his name last issue.
TODAY'S TANTALIZER
sianorhanturt

L. L. Gobbel



Conference Superintendent in charge of Johnston County Standard Training School in session at Methodist church here.

Training School Gets Under Way

Around A Hundred Have Enrolled in the Four Courses Being Offered This Week

The fifth annual Johnston County Standard Training School for Sunday school workers got under way Sunday afternoon at the Methodist church here with around a hundred enrolling in the four courses being offered. Mr. L. L. Gobbel, of Durham, Conference Superintendent, is in charge of the school, and will teach one of the courses. He is assisted in the school by Dr. Chas. D. Bulla, of Nashville, Tenn., Dr. Paul N. Garber and Prof. C. B. Childs, of Duke University, Durham. Double class sessions are held each evening this week beginning at 7:30 o'clock. Some of the courses are of general interest, and visitors will be given a cordial welcome.

In the opening session Sunday afternoon, delegations from the various churches in the county were recognized, and it was found that Clayton, Selma, Kenly, Benson, Princeton, Four Oaks and Smithfield Methodist churches were represented, besides others from other denominations.

Dr. Bulla, who is teaching a course entitled "Evangelism in the Sunday School," preached at the Methodist church here Sunday morning at eleven o'clock. His discourse, the theme of which was appreciation of others, was characterized by fine descriptions, timely humor, and literary allusions that served to drive home the deep spiritual lesson of the hour.

ROMANCE OF GIRL OF 'FRISCO TENDERLOIN

Corinne Griffith appeared in a film role that was entirely different from those in which she has been seen hitherto, when First National's "Outcast" in which she stars, came to the Sanders theatre in this city last night and which will complete its run here tonight (Tuesday).

"Outcast" deals with the romance of a San Francisco woman of the tenderloin, and a young idler whom she regenerates. It is the powerful feminine characterization that, in the same plot on the stage, made Elsie Ferguson famous behind the footlights. William A. Seiter directed the modernized film version and Edmund Lowe plays opposite Miss Griffith.

Prominent in the supporting roles are Huntley Gordon, Louise Fazenda, James Ford, Kathryn Carter, Sam Hardy, Lee Moran and Claude King.

Lovers of the celluloid mode of entertainment will do well to see "Outcast" at its last showing this afternoon and night as Corinne Griffith is at her best in this production.

Saw "Rio Rito"

Capt. and Mrs. Horace Johnson and little daughter, Peggy, saw "Rio Rito" in Fort Bragg, Sunday night.

CONSTABLE TALTON ARRESTS DESERTER

Monroe Holt, who deserted the United States Navy on November 26, 1928, and Albert Holt, wanted for skipping bond after being arrested in Boon Hill township last Wednesday night by Constable T. E. Talton, Albert Holt was found in his home lying between the springs and mattress of a bed, the feather bed having been smoothed out to conceal all signs of the hidden man. Monroe Holt was found in the same home.

Both men were brought here and placed in the Johnston county jail. On Thursday, Monroe Holt was carried by Mr. Talton to the recruiting station at Raleigh, and Mr. Talton received fifty dollars for the return of the fugitive.

Albert Holt is still in jail awaiting trial in the Superior court.

State Inspector Inspects Cafes

Capital Cafe in This City With Rating of 82 1/2 Per Cent Only One That Meets Requirements of Law

The following cafes in Smithfield and Selma were recently inspected by State Inspector L. G. Whitely, under direction of the State Department of Health, and gives a rating under the authority of Chapter 186, Public Law of 1921. This rating is made on the basis of equipment, personnel, and sanitation. In this respect particularly it was determined by the inspector that the surprisingly low rating of these eating places came as a result of insanitary conditions in the kitchen where the food is prepared. Another feature which operates unfavorably against a public eating place is the manner in which they dispose or fail to dispose of kitchen garbage.

Ratings (White)

Smithfield Cafes.
Capital Cafe, Manager Bill Counoukias, 82 1/2; New Bakery Cafe, Mrs. A. L. Brock, 57 1/2; Johnson Cafe, Mrs. Annie Johnson, 35 1/2.

Colored: Jones Cafe, John Artis, 44.

Selma Cafes.

Rightway Cafe, Manager R. W. Gooch, 60 1/2; Southern and A. C. L. Cafe, Manager George Kallas, 58.

Colored: House Cafe, Manager Charles House, 38 1/2.

It is against the state law to maintain a cafe with a sanitary rating of less than 70.

Birthday Party.

Four Oaks, Mar. 4.—The clouds and rain did not dampen the ardor of the pleasure of a merry little party of children gathering in the home of Mrs. B. I. Tart on the afternoon of February 24. The occasion was the celebration of Master Leon Adams' sixth birthday. Many games which are usually enjoyed outdoors lost none of their fun when led by Mrs. Tart indoors, through her hall and living rooms.

The little guests proved the long standing truth that "it is more blessed to give than to receive" as the gifts were piled on a table to the rumbling-over stage. After much glee in opening the packages, they were led into the dining room where the real climax of the afternoon awaited them. The table was beautiful with a big white birthday cake with six lighted candles in the center. The places were marked by little George Washington hatchets on which were inscribed, "I cannot tell a lie."

Further decorations of cherries emphasized the idea. Little Leon cut his big cake and treated each little guest to a generous slice as an aid to the ice cream they were enjoying.

Now Cosmetic Stunt.

Miss Bright: "I use the dumb-bells to get color in my face."
Uncle: "Sensible girl! That's a lot better than using color on your face to get the dumb-bells."
—Boston Transcript.

Doings Of N. C. General Assembly

Lower House Springs Surprise In Defeating Bill To Provide Nearly Two Million Dollars For State Institutions

By M. L. SHIPMAN

RALEIGH, March 4.—Unexpected as to what it wanted to do, the lower house of the general assembly surprised all this week when it defeated out of hand the bill to provide bonds totalling nearly two million dollars for permanent improvements at state institutions. This was the highlight of the week but several important measures were up before the legislature. Chief among these was Governor Gardner's bill to make appointive the offices of commissioner of labor and printing, revenue and insurance commissionerships and head of the department of agriculture. At the same time the governor recommends transfer of certain printing to the jurisdiction of purchasing agent from the department of labor and printing. He also got a bill through to create an assistant to the pardons commissioner and to help him in other ways, and recommend a permanent tax commission. After a tremendous fight, on schools the MacLean eight months bill was substituted by another which will not require a sales tax for its support but will reduce land taxes. As to what it will do to the school system is a problem, but apparently the chief idea of the legislature in considering school bills was to study them from the standpoint of taxation and not education.

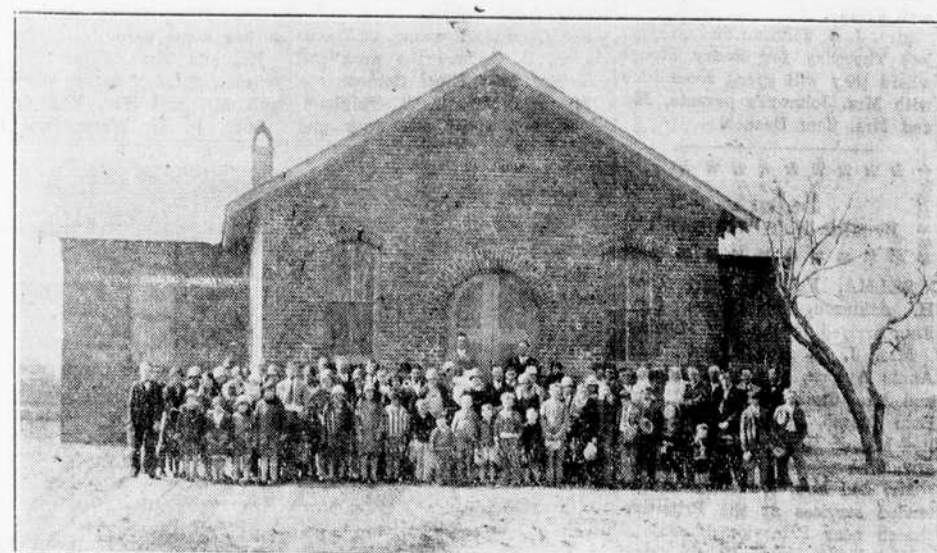
The defeat of the bond issue for permanent improvements was a tremendous surprise. It was headed for success when Mr. Mull of Shelby said he did not approve of bond issues at present and voted against it. Mr. Mull being a strong leader close to Governor Gardner, the house was stampeded and defeated the bill out of hand. Then the governor issued a statement condemning the act of the legislature and Mr. Mull moved for reconsideration of the vote, which will be taken up this week. The chances are it will be replaced on the calendar and will be passed.

The governor's bill to provide for the short ballot by eliminating from elections all except constitutional officers probably will meet with success. It has been urged in some quarters for several years on the theory that the governor ought to select his own cabinet. The measure does not go quite that far, at the same time it provides for filling some important offices through appointment. The assistant to the pardons commissioner, and he will get a much larger salary for his work. Just exactly what his duties will be outside of handling pardons has not been explained but it is said that Governor Gardner favors the new law.

The house sub-committee tried desperately during the past week to destroy the Australian ballot bill by amending it to such an extent that it would virtually be of no use at all. The full committee, however, cast aside the amendments recommended and probably will return the bill to the house but little changed from when received. It is predicted that it will have a hard time getting by but the influence of the governor and the pressure of public opinion are two elements making for its passage.

The second police pension bill to come before the legislature was withdrawn by its proponent, Representative Younce of Guilford after it appeared that the bill had no chance to pass. Then he introduced a police pension bill applying only to Guilford county which was immediately killed after two other Guilford delegates took the floor against it. The senate took a great forward step, and one which was long advocated by this writer when commissioner of labor and printing, when it passed the workmen's compensa-

New Presbyterian Church At Progress



First brick church in Boon Hill Township, dedicated February 17. Thirteen additions to the membership were made last week at the close of a ten-day revival.

Radio Service At Local Church

Large Congregation Enjoys Radio Service at Presbyterian Church; Dr. B. R. Lacy Speaks From WPTF

A large congregation at the local Presbyterian church enjoyed the radio program which was broadcast from the Raleigh station Sunday afternoon at six o'clock. The service was conducted by Dr. W. McC. White, pastor of the First Presbyterian church of Raleigh, and an appropriate musical program by the choir of the First Presbyterian church preceded an address by Dr. B. R. Lacy, president of the Union Theological Seminary, Richmond, Va., and son of the late State Treasurer B. R. Lacy. Dr. Lacy spoke in the interest of benevolences of the northern Presbyterian church, the new church year beginning April 1.

This service was made possible for the local church by courtesy of the Young Motor company, in cooperation with the pastor, Rev. Chester Alexander, in installing an Edison radio for this occasion. The Young Motor company also furnished radios for Oakland and Selma Presbyterian churches for this program.

Similar radio programs were broadcast from Greensboro and Charlotte at the same hour.

NEUSE RIVER OUT OF BANKS

Recent rains have caused streams in this vicinity to rise until some of them are out of their banks. Flood waters of Neuse River reach nearly to the brick yard. No unusual record has been made up to date.

Birth Announcement

Born to Mr. and Mrs. Nathan Massengill on Saturday, March 2, a daughter.

High School.

1 teacher for 20 pupils.
2 teachers for 35 pupils.
3 teachers for 45 pupils.
4 teachers for 55 pupils.
5 teachers for 65 pupils.
6 teachers for 75 pupils.
7 teachers for 85 pupils.
8 teachers for 95 pupils.
9 teachers for 105 pupils.
10 teachers for 115 pupils.
11 teachers for 125 pupils.
12 teachers for 135 pupils.
13 teachers for 145 pupils.
14 teachers for 155 pupils.
15 teachers for 165 pupils.
16 teachers for 175 pupils.
17 teachers for 185 pupils.
18 teachers for 195 pupils.
19 teachers for 205 pupils.
20 teachers for 215 pupils.
21 teachers for 225 pupils.
22 teachers for 235 pupils.
23 teachers for 245 pupils.
24 teachers for 255 pupils.
25 teachers for 265 pupils.
26 teachers for 275 pupils.
27 teachers for 285 pupils.
28 teachers for 295 pupils.
29 teachers for 305 pupils.
30 teachers for 315 pupils.
31 teachers for 325 pupils.
32 teachers for 335 pupils.
33 teachers for 345 pupils.
34 teachers for 355 pupils.
35 teachers for 365 pupils.
36 teachers for 375 pupils.
37 teachers for 385 pupils.
38 teachers for 395 pupils.
39 teachers for 405 pupils.
40 teachers for 415 pupils.
41 teachers for 425 pupils.
42 teachers for 435 pupils.
43 teachers for 445 pupils.
44 teachers for 455 pupils.
45 teachers for 465 pupils.
46 teachers for 475 pupils.
47 teachers for 485 pupils.
48 teachers for 495 pupils.
49 teachers for 505 pupils.
50 teachers for 515 pupils.
51 teachers for 525 pupils.
52 teachers for 535 pupils.
53 teachers for 545 pupils.
54 teachers for 555 pupils.
55 teachers for 565 pupils.
56 teachers for 575 pupils.
57 teachers for 585 pupils.
58 teachers for 595 pupils.
59 teachers for 605 pupils.
60 teachers for 615 pupils.
61 teachers for 625 pupils.
62 teachers for 635 pupils.
63 teachers for 645 pupils.
64 teachers for 655 pupils.
65 teachers for 665 pupils.
66 teachers for 675 pupils.
67 teachers for 685 pupils.
68 teachers for 695 pupils.
69 teachers for 705 pupils.
70 teachers for 715 pupils.
71 teachers for 725 pupils.
72 teachers for 735 pupils.
73 teachers for 745 pupils.
74 teachers for 755 pupils.
75 teachers for 765 pupils.
76 teachers for 775 pupils.
77 teachers for 785 pupils.
78 teachers for 795 pupils.
79 teachers for 805 pupils.
80 teachers for 815 pupils.
81 teachers for 825 pupils.
82 teachers for 835 pupils.
83 teachers for 845 pupils.
84 teachers for 855 pupils.
85 teachers for 865 pupils.
86 teachers for 875 pupils.
87 teachers for 885 pupils.
88 teachers for 895 pupils.
89 teachers for 905 pupils.
90 teachers for 915 pupils.
91 teachers for 925 pupils.
92 teachers for 935 pupils.
93 teachers for 945 pupils.
94 teachers for 955 pupils.
95 teachers for 965 pupils.
96 teachers for 975 pupils.
97 teachers for 985 pupils.
98 teachers for 995 pupils.
99 teachers for 1005 pupils.
100 teachers for 1015 pupils.
101 teachers for 1025 pupils.
102 teachers for 1035 pupils.
103 teachers for 1045 pupils.
104 teachers for 1055 pupils.
105 teachers for 1065 pupils.
106 teachers for 1075 pupils.
107 teachers for 1085 pupils.
108 teachers for 1095 pupils.
109 teachers for 1105 pupils.
110 teachers for 1115 pupils.
111 teachers for 1125 pupils.
112 teachers for 1135 pupils.
113 teachers for 1145 pupils.
114 teachers for 1155 pupils.
115 teachers for 1165 pupils.
116 teachers for 1175 pupils.
117 teachers for 1185 pupils.
118 teachers for 1195 pupils.
119 teachers for 1205 pupils.
120 teachers for 1215 pupils.
121 teachers for 1225 pupils.
122 teachers for 1235 pupils.
123 teachers for 1245 pupils.
124 teachers for 1255 pupils.
125 teachers for 1265 pupils.
126 teachers for 1275 pupils.
127 teachers for 1285 pupils.
128 teachers for 1295 pupils.
129 teachers for 1305 pupils.
130 teachers for 1315 pupils.
131 teachers for 1325 pupils.
132 teachers for 1335 pupils.
133 teachers for 1345 pupils.
134 teachers for 1355 pupils.
135 teachers for 1365 pupils.
136 teachers for 1375 pupils.
137 teachers for 1385 pupils.
138 teachers for 1395 pupils.
139 teachers for 1405 pupils.
140 teachers for 1415 pupils.
141 teachers for 1425 pupils.
142 teachers for 1435 pupils.
143 teachers for 1445 pupils.
144 teachers for 1455 pupils.
145 teachers for 1465 pupils.
146 teachers for 1475 pupils.
147 teachers for 1485 pupils.
148 teachers for 1495 pupils.
149 teachers for 1505 pupils.
150 teachers for 1515 pupils.
151 teachers for 1525 pupils.
152 teachers for 1535 pupils.
153 teachers for 1545 pupils.
154 teachers for 1555 pupils.
155 teachers for 1565 pupils.
156 teachers for 1575 pupils.
157 teachers for 1585 pupils.
158 teachers for 1595 pupils.
159 teachers for 1605 pupils.
160 teachers for 1615 pupils.
161 teachers for 1625 pupils.
162 teachers for 1635 pupils.
163 teachers for 1645 pupils.
164 teachers for 1655 pupils.
165 teachers for 1665 pupils.
166 teachers for 1675 pupils.
167 teachers for 1685 pupils.
168 teachers for 1695 pupils.
169 teachers for 1705 pupils.
170 teachers for 1715 pupils.
171 teachers for 1725 pupils.
172 teachers for 1735 pupils.
173 teachers for 1745 pupils.
174 teachers for 1755 pupils.
175 teachers for 1765 pupils.
176 teachers for 1775 pupils.
177 teachers for 1785 pupils.
178 teachers for 1795 pupils.
179 teachers for 1805 pupils.
180 teachers for 1815 pupils.
181 teachers for 1825 pupils.
182 teachers for 1835 pupils.
183 teachers for 1845 pupils.
184 teachers for 1855 pupils.
185 teachers for 1865 pupils.
186 teachers for 1875 pupils.
187 teachers for 1885 pupils.
188 teachers for 1895 pupils.
189 teachers for 1905 pupils.
190 teachers for 1915 pupils.
191 teachers for 1925 pupils.
192 teachers for 1935 pupils.
193 teachers for 1945 pupils.
194 teachers for 1955 pupils.
195 teachers for 1965 pupils.
196 teachers for 1975 pupils.
197 teachers for 1985 pupils.
198 teachers for 1995 pupils.
199 teachers for 2005 pupils.
200 teachers for 2015 pupils.
201 teachers for 2025 pupils.
202 teachers for 2035 pupils.
203 teachers for 2045 pupils.
204 teachers for 2055 pupils.
205 teachers for 2065 pupils.
206 teachers for 2075 pupils.
207 teachers for 2085 pupils.
208 teachers for 2095 pupils.
209 teachers for 2105 pupils.
210 teachers for 2115 pupils.
211 teachers for 2125 pupils.
212 teachers for 2135 pupils.
213 teachers for 2145 pupils.
214 teachers for 2155 pupils.
215 teachers for 2165 pupils.
216 teachers for 2175 pupils.
217 teachers for 2185 pupils.
218 teachers for 2195 pupils.
219 teachers for 2205 pupils.
220 teachers for 2215 pupils.
221 teachers for 2225 pupils.
222 teachers for 2235 pupils.
223 teachers for 2245 pupils.
224 teachers for 2255 pupils.
225 teachers for 2265 pupils.
226 teachers for 2275 pupils.
227 teachers for 2285 pupils.
228 teachers for 2295 pupils.
229 teachers for 2305 pupils.
230 teachers for 2315 pupils.
231 teachers for 2325 pupils.
232 teachers for 2335 pupils.
233 teachers for 2345 pupils.
234 teachers for 2355 pupils.
235 teachers for 2365 pupils.
236 teachers for 2375 pupils.
237 teachers for 2385 pupils.
238 teachers for 2395 pupils.
239 teachers for 2405 pupils.
240 teachers for 2415 pupils.
241 teachers for 2425 pupils.
242 teachers for 2435 pupils.
243 teachers for 2445 pupils.
244 teachers for 2455 pupils.
245 teachers for 2465 pupils.
246 teachers for 2475 pupils.
247 teachers for 2485 pupils.
248 teachers for 2495 pupils.
249 teachers for 2505 pupils.
250 teachers for 2515 pupils.
251 teachers for 2525 pupils.
252 teachers for 2535 pupils.
253 teachers for 2545 pupils.
254 teachers for 2555 pupils.
255 teachers for 2565 pupils.
256 teachers for 2575 pupils.
257 teachers for 2585 pupils.
258 teachers for 2595 pupils.
259 teachers for 2605 pupils.
260 teachers for 2615 pupils.
261 teachers for 2625 pupils.
262 teachers for 2635 pupils.
263 teachers for 2645 pupils.
264 teachers for 2655 pupils.
265 teachers for 2665 pupils.
266 teachers for 2675 pupils.
267 teachers for 2685 pupils.
268 teachers for 2695 pupils.
269 teachers for 2705 pupils.
270 teachers for 2715 pupils.
271 teachers for 2725 pupils.
272 teachers for 2735 pupils.
273 teachers for 2745 pupils.
274 teachers for 2755 pupils.
275 teachers for 2765 pupils.
276 teachers for 2775 pupils.
277 teachers for 2785 pupils.
278 teachers for 2795 pupils.
279 teachers for 2805 pupils.
280 teachers for 2815 pupils.
281 teachers for 2825 pupils.
282 teachers for 2835 pupils.
283 teachers for 2845 pupils.
284 teachers for 2855 pupils.
285 teachers for 2865 pupils.
286 teachers for 2875 pupils.
287 teachers for 2885 pupils.
288 teachers for 2895 pupils.
289 teachers for 2905 pupils.
290 teachers for 2915 pupils.
291 teachers for 2925 pupils.
292 teachers for 2935 pupils.
293 teachers for 2945 pupils.
294 teachers for 2955 pupils.
295 teachers for 2965 pupils.
296 teachers for 2975 pupils.
297 teachers for 2985 pupils.
298 teachers for 2995 pupils.
299 teachers for 3005 pupils.
300 teachers for 3015 pupils.
301 teachers for 3025 pupils.
302 teachers for 3035 pupils.
303 teachers for 3045 pupils.
304 teachers for 3055 pupils.
305 teachers for 3065 pupils.
306 teachers for 3075 pupils.
307 teachers for 3085 pupils.
308 teachers for 3095 pupils.
309 teachers for 3105 pupils.
310 teachers for 3115 pupils.
311 teachers for 3125 pupils.
312 teachers for 3135 pupils.
313 teachers for 3145 pupils.
314 teachers for 3155 pupils.
315 teachers for 3165 pupils.
316 teachers for 3175 pupils.
317 teachers for 3185 pupils.
318 teachers for 3195 pupils.
319 teachers for 3205 pupils.
320 teachers for 3215 pupils.
321 teachers for 3225 pupils.
322 teachers for 3235 pupils.
323 teachers for 3245 pupils.
324 teachers for 3255 pupils.
325 teachers for 3265 pupils.
326 teachers for 3275 pupils.
327 teachers for 3285 pupils.
328 teachers for 3295 pupils.
329 teachers for 3305 pupils.
330 teachers for 3315 pupils.
331 teachers for 3325 pupils.
332 teachers for 3335 pupils.
333 teachers for 3345 pupils.
334 teachers for 3355 pupils.
335 teachers for 3365 pupils.
336 teachers for 3375 pupils.
337 teachers for 3385 pupils.
338 teachers for 3395 pupils.
339 teachers for 3405 pupils.
340 teachers for 3415 pupils.
341 teachers for 3425 pupils.
342 teachers for 3435 pupils.
343 teachers for 3445 pupils.
344 teachers for 3455 pupils.
345 teachers for 3465 pupils.
346 teachers for 3475 pupils.
347 teachers for 3485 pupils.
348 teachers for 3495 pupils.
349 teachers for 3505 pupils.
350 teachers for 3515 pupils.
351 teachers for 3525 pupils.
352 teachers for 3535 pupils.
353 teachers for 3545 pupils.
354 teachers for 3555 pupils.
355 teachers for 3565 pupils.
356 teachers for 3575 pupils.
357 teachers for 3585 pupils.
358 teachers for 3595 pupils.
359 teachers for 3605 pupils.
360 teachers for 3615 pupils.
361 teachers for 3625 pupils.
362 teachers for 3635 pupils.
363 teachers for 3645 pupils.
364 teachers for 3655 pupils.
365 teachers for 3665 pupils.
366 teachers for 3675 pupils.
367 teachers for 3685 pupils.
368 teachers for 3695 pupils.
369 teachers for 3705 pupils.
370 teachers for 3715 pupils.
371 teachers for 3725 pupils.
372 teachers for 3735 pupils.
373 teachers for 3745 pupils.
374 teachers for 3755 pupils.
375 teachers for 3765 pupils.
376 teachers for 3775 pupils.
377 teachers for 3785 pupils.
378 teachers for 3795 pupils.
379 teachers for 3805 pupils.
380 teachers for 3815 pupils.
381 teachers for 3825 pupils.
382 teachers for 3835 pupils.
383 teachers for 3845 pupils.
384 teachers for 3855 pupils.
385 teachers for 3865 pupils.
386 teachers for 3875 pupils.
387 teachers for 3885 pupils.
388 teachers for 3895 pupils.
389 teachers for 3905 pupils.
390 teachers for 3915 pupils.
391 teachers for 3925 pupils.
392 teachers for 3935 pupils.
393 teachers for 3945 pupils.
394 teachers for 3955 pupils.
395 teachers for 3965 pupils.
396 teachers for 3975 pupils.
397 teachers for 3985 pupils.
398 teachers for 3995 pupils.
399 teachers for 4005 pupils.
400 teachers for 4015 pupils.
401 teachers for 4025 pupils.
402 teachers for 4035 pupils.
403 teachers for 4045 pupils.
404 teachers for 4055 pupils.
405 teachers for 4065 pupils.
406 teachers for 4075 pupils.
407 teachers for 4085 pupils.
408 teachers for 4095 pupils.
409 teachers for 4105 pupils.
410 teachers for 4115 pupils.
411 teachers for 4125 pupils.
412 teachers for 4135 pupils.
413 teachers for 4145 pupils.
414 teachers for 4155 pupils.
415 teachers for 4165 pupils.
416 teachers for 4175 pupils.
417 teachers for 4185 pupils.
418 teachers for 4195 pupils.
419 teachers for 4205 pupils.
420 teachers for 4215 pupils.
421 teachers for 4225 pupils.
422 teachers for 4235 pupils.
423 teachers for 4245 pupils.
424 teachers for 4255 pupils.
425 teachers for 4265 pupils.
426 teachers for 4275 pupils.
427 teachers for 4285 pupils.
428 teachers for 4295 pupils.
429 teachers for 4305 pupils.
430 teachers for 4315 pupils.
431 teachers for 4325 pupils.
432 teachers for 4335 pupils.
433 teachers for 4345 pupils.
434 teachers for 4355 pupils.
435 teachers for 4365 pupils.
436 teachers for 4375 pupils.
437 teachers for 4385 pupils.
438 teachers for 4395 pupils.
439 teachers for 4405 pupils.
440 teachers for 4415 pupils.
441 teachers for 4425 pupils.
442 teachers for 4435 pupils.
443 teachers for 4445 pupils.
444 teachers for 4455 pupils.
445 teachers for 4465 pupils.
446 teachers for 4475 pupils.
447 teachers for 4485 pupils.
448 teachers for 4495 pupils.
449 teachers for 4505 pupils.
450 teachers for 4515 pupils.
451 teachers for 4525 pupils.
452 teachers for 4535 pupils.
453 teachers for 4545 pupils.
454 teachers for 4555 pupils.
455 teachers for 4565 pupils.
456 teachers for 4575 pupils.
457 teachers for 4585 pupils.
458 teachers for 4595 pupils.
459 teachers for 4605 pupils.
460 teachers for 4615 pupils.
461 teachers for 4625 pupils.
462 teachers for 4635 pupils.
463 teachers for 4645 pupils.
464 teachers for 4655 pupils.
465 teachers for 4665 pupils.
466 teachers for 4675 pupils.
467 teachers for 4685 pupils.
468 teachers for 4695 pupils.
469 teachers for 4705 pupils.
470 teachers for 4715 pupils.
471 teachers for 4725 pupils.
472 teachers for 4735 pupils.
473 teachers for 4745 pupils.
474 teachers for 4755 pupils.
475 teachers for 4765 pupils.
476 teachers for 4775 pupils.
477 teachers for 4785 pupils.
478 teachers for 4795 pupils.
479 teachers for 4805 pupils.
480 teachers for 4815 pupils.
481 teachers for 4825 pupils.
482 teachers for 4835 pupils.
483 teachers for 4845 pupils.
484 teachers for 4855 pupils.
485 teachers for 4865 pupils.
486 teachers for 4875 pupils.
487 teachers for 4885 pupils.
488 teachers for 4895 pupils.
489 teachers for 4905 pupils.
490 teachers for 4915 pupils.
491 teachers