

SCHOOL BOOKS AT HALF PRICE
WE PAY THE FREIGHT.

ARE YOU OUT OF TOWN? Law, Medical and Historical Books of North Carolina
TYPEWRITERS, STATIONERY, FOUNTAIN PENS, ETC.
THE CHEAPEST BIBLES ANYWHERE.

SOUTHERN BOX EXCHANGE,
M. M. SMITH, Manager. RALEIGH, N. C.

DENNIS SIMMONS LUMBER CO.,
Manufacturers of . . .
Kila Dried North Carolina Pine Lumber,
DEANIS SIMMONS' BRAND CYPRESS SHINGLES
WILLIAMSTON, N. C.

BANK OF MARTIN COUNTY,
AT WILLIAMSTON, N. C.,
At the close of business on the 2nd day of Feb., 1903:

RESOURCES:		LIABILITIES:	
Loans & Discounts	\$ 30,965.58	Capital Stock	\$ 10,000.00
Over Drafts	622.05	Surplus	2,500.00
Other Stocks and Bonds	1,000.00	Undivided Profits	1,534.44
Real Estate & Mortgages	1,465.59	Certificates of Deposit	6,496.54
Due from Banks and Bankers	27,500.85	Deposits subject to Check	64,164.52
Cash on Hand	2,064.54		
TOTAL	\$ 32,059.96	TOTAL	\$ 82,695.96

J. G. Godard, Cashier, of Bank of Martin County, do solemnly swear (or affirm) that the above statement is true to the best of my knowledge and belief.
J. G. GODARD, Cashier.

TWO TRACKS OF TEXAS
A NEW FAST TRAIN
Between St. Louis and Kansas City and
OKLAHOMA CITY,
WICHITA,
DENISON,
SHERMAN,
DALLAS,
FORT WORTH

THE ST. LOUIS & SAN FRANCISCO RAILROAD
One-Half FARE, plus \$2.00 to points in
ARKANSAS, MISSOURI, KANSAS, NEBRASKA,
COLORADO, TEXAS, OKLAHOMA and
INDIAN TERRITORY

On the following dates
November 4th and 18th
December 2nd " 16th
January 6th " 20th
February 3rd " 17th
March 3rd " 17th
April 7th " 21st

Write for advertising matter, rates and information to
W. T. SAUNDERS
G. A. P. D.
Atlanta, Ga.

Needed in Every Home
THE NEW AND ENLARGED EDITION OF
WEBSTER'S INTERNATIONAL DICTIONARY
A Dictionary of ENGLISH, Biography, Geography, Fiction, etc.
New Plates Throughout
25,000 New Words
Phrases and Definitions
Prepared under the direct supervision of W. T. HARRIS, Ph.D., LL.D., United States Commissioner of Education, assisted by a large corps of competent specialists and editors.
Rich Bindings. 2364 Quarto Pages. 5300 Illustrations.
The International was first issued in 1890, succeeding the "Unabridged." The New and Enlarged Edition of the International was issued in October, 1900. Get the latest and best.
We also publish Webster's Collegiate Dictionary with Glossary of Scottish Words and Phrases. 1100 Pages. 1000 Illustrations. Size 7x9x1 1/2 inches. "First-class in quality, second-class in price."
Specimen pages of both books sent on application.
G. & C. MERRIAM CO., Publishers, Springfield, Mass.

"1847 Rogers Bros."
on Spoons, Forks, etc., is a guarantee of quality the world over. The prefix "1847" insures the genuine Rogers quality. For sale by leading dealers everywhere. Send for catalogue No. 6 to International Silver Co., Boston, Conn.

THE JAPANESE MODEL.
The Kimono Very Popular in Tea Jackets and Coats.
Japanese fashion greatly influences the little folks' outfitting this season, and the lines of the kimono are also highly popular with the older people. Some of the latest coats show these features. Though it is a tea jacket that is here shown, it gives the effect as developed in outdoor coats. The back is full and loose. For this tea jacket the

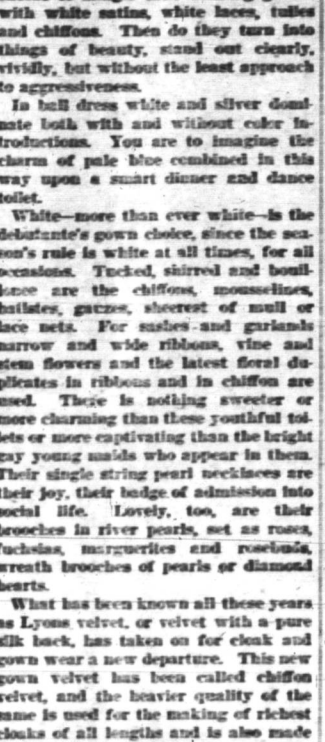


KIMONO TEA JACKET.
Kimono is carried out in soft satin with handsome oriental embroidery fashioning the stole and collar and wide turn back cuffs. As has been said, the back of the jacket is a special feature, being skillfully cut so that the material will hang well out from the figure in three heavy flutes, for not a few of these jackets are spotted by the backs being plain straight necks.

SOCIAL GRACES.
Some of the Small but Important Secrets of a Successful Career.
Quite in accord with the spirit of the old rhyme, "Chance and changes are busy ever," many a bride has begun her new life in a town remote from her childhood's home. Being in the beauty of her gracious young womanhood, she will wish to find her place in some social circle, and she will be fortunate indeed if she has relatives of her own or her husband to guide her in the selection of friends. In any case she will need to be carefully observant of the customs peculiar to the people about her, and she will wisely take a little time to choose her associates.
It is always best to exercise extreme conservatism in the matter of intimacies, remembering that every act of a newcomer will speak in her favor or the reverse. Friendships of the best kind must have some reason for their being. Their basis is always congeniality and helpfulness of a mutual kind, such as time alone can develop and strengthen. If the most astonishing friendships are formed within a fortnight, the chances are that they will fall quickly. Meanwhile the opportunities for more desirable ones may be cut off.
Above all, the tactful woman will consider well the terms in which she speaks of her new home. If she complains of dullness in her social world, it is a tacit admission that she has little to contribute, and the future may effect no favorable changes for her. Society is ever on the lookout for desirable acquisitions and will quickly recognize talent and congenial elements.
The sensible young matron does not entertain the callers in her new home by giving glowing accounts of the virtues of her former associates. Neither does she speak of their wealth and influence. Observation has confirmed the opinion that this is in reality a common error.
If she has been "bred to the purple," the fact will be evident in many ways, and no matter how deeply wedded she may be to former associations she must face the future and trust to time and her own best efforts to create new impressions of her character and worth which shall rival the old.
She should lose no time in identifying herself with those movements in which she has been interested elsewhere or toward which she feels a sympathetic inclination. Once within the membership of any organization she should strive to do well the duty that lies nearest and not content herself with merely listening to the efforts of others.
Believe in any opportunities for service which may present themselves, for with the doing of hard work comes strength for more brilliant effort. The legitimate work and purpose of many an organization has been crippled by the reluctance and failure of members to perform their duties. It will develop a capacity for hard work to do this, but no effort will bring better reward.
Life is not so short but that there is always time for courtesy. Self command is the main elegance. Keep cool and you command everybody. This, then, is the secret of a successful social career.—Table Talk.

WHAT SHE WEARS.
Green and White the Favorite Colors—The New Chiffon Velvets.
Green enters into as much favor and marks the winter chic of ball gowns quite as decidedly as it does in millinery and in day dress. It is the way in which it is expressed that makes all the difference. An entire green gown needs to be very delicate in color and tone for ballroom wear because anything stronger or more defined becomes crude and harsh. The best makers choose to mingle their evening greens with white satin, white lace, tulle and chiffon. Then do they turn into things of beauty, stand out clearly, vividly, but without the least approach to aggressiveness.
In ball dress white and silver dominate both with and without color introductions. You are to imagine the charm of pale blue combined in this way upon a smart dinner and dance toilet.
White—more than ever white—is the debutante's gown choice, since the season's rule is white at all times, for all occasions. Tucked, shirred and bouffant are the chiffons, mousselines, batistes, gazzes, sheers of mill or lace nets. For sashes and girdles narrow and wide ribbons, vine and stem flowers and the latest floral decorations in ribbon and in chiffon are used. There is nothing sweeter or more charming than these youthful toilets or more captivating than the bright gay young maids who appear in them. Their single string pearl necklaces are their joy, their badge of admission into social life. Lovely, too, are their brooches in river pearls, set as roses, fuchsias, marguerites and rosebuds, wreath brooches of pearls or diamond hearts.
What has been known all these years as Lyons velvet, or velvet with a pure silk back, has taken on for cloak and gown wear a new departure. This new gown velvet has been called chiffon velvet, and the heavier quality of the same is used for the making of richest cloaks of all lengths and is also made up into gowns, when they are to be black ones especially. Mandarin cloak

WHAT SHE WEARS.
Green and White the Favorite Colors—The New Chiffon Velvets.
Green enters into as much favor and marks the winter chic of ball gowns quite as decidedly as it does in millinery and in day dress. It is the way in which it is expressed that makes all the difference. An entire green gown needs to be very delicate in color and tone for ballroom wear because anything stronger or more defined becomes crude and harsh. The best makers choose to mingle their evening greens with white satin, white lace, tulle and chiffon. Then do they turn into things of beauty, stand out clearly, vividly, but without the least approach to aggressiveness.
In ball dress white and silver dominate both with and without color introductions. You are to imagine the charm of pale blue combined in this way upon a smart dinner and dance toilet.
White—more than ever white—is the debutante's gown choice, since the season's rule is white at all times, for all occasions. Tucked, shirred and bouffant are the chiffons, mousselines, batistes, gazzes, sheers of mill or lace nets. For sashes and girdles narrow and wide ribbons, vine and stem flowers and the latest floral decorations in ribbon and in chiffon are used. There is nothing sweeter or more charming than these youthful toilets or more captivating than the bright gay young maids who appear in them. Their single string pearl necklaces are their joy, their badge of admission into social life. Lovely, too, are their brooches in river pearls, set as roses, fuchsias, marguerites and rosebuds, wreath brooches of pearls or diamond hearts.
What has been known all these years as Lyons velvet, or velvet with a pure silk back, has taken on for cloak and gown wear a new departure. This new gown velvet has been called chiffon velvet, and the heavier quality of the same is used for the making of richest cloaks of all lengths and is also made up into gowns, when they are to be black ones especially. Mandarin cloak



A HANDSOME WINTER TOILET.
models in this black velvet are grand mode. Guipure lace of the finest quality, assisted by medallions of the finest quality in passementerie, in part lace and chenille, accompanied by equally lovely tassels, is the chosen trimming. The linings are of white duchesse satin. The front satin lines are a wide border of embroidery in colored silks, which may be Perle, Chateau or Turkish, as oriental coloring is altogether to the fore for this kind of decoration. The lightness of cloaks made of this new velvet is a pleasing contrast to the velvet garments of the past. This chiffon velvet in evening colors is of surpassing beauty and lightness and the craze of the hour.
Motor driving has made a hit in all fur suits. Modish and brought into fashion also is the use of dressed pony and donkey skins for long coats, their trimming of mink or natural beaver as well as otter. Felt, beaver and glazed kid are the proper hats to wear with them, and soft silk drawn in curtains is attached, and as well mica masses, thought indispensable for long journeys.
The extravagance of past years in fine handkerchiefs has been fully revived. Real laces are employed by great beauty and manufactured for that express purpose. The lace maker's skill traces the narrow lines into designs of great attractiveness, while the embroiderer's art stands out in marvelous ways with and without combinations of lace. Less elaborate, but of great beauty, are the narrow needlework bordered handkerchiefs, as well as costly machine wrought, which has reached a perfection that is admirable. Fine colored tulle lawns are modish to a certain extent with forenoon suits, but need to be carried judiciously.
For street suits and general wear nothing is more popular than heavy rough mixed cloths. They have become prime favorites rather than the same rough cloths in solid colors. Settings of flecked with white, black and mixed colors make up very becomingly.—Vogue.



Decorative Notes.
No curtains of all kinds are the most favored just now.
Articles in old brass, copper or pewter are cherished treasuries.
Old quiltings are now as much sought after as is antique furniture.

THE EASY PILL.
DeWitt's Little Early Risers do not gripe nor weaken the system. They cure biliousness, jaundice, constipation and inactive livers, by increasing the secretions, moving the bowels gently, yet effectively, and giving such tone and strength to the glands of the stomach, liver and bowels that the cause of the trouble is removed entirely. These famous little pills exert a decided tonic effect upon the organs involved, and if their use is continued for a few days there will be no return of the trouble.—S. R. Hays.



Miss Ida M. Snyder,
Dressmaker of the
Brooklyn East End Art Club.
"If women would pay more attention to their health we would have more happy wives, mothers and daughters, and if they would observe results they would find that the doctor's prescriptions do not perform the many cures they are given credit for."
"In consulting with my daughter he advised McEwen's Wine of Cardui and that was the best thing I ever did for my health. I have opened up to me with renewed health, and it only took three months to cure me."
"Wine of Cardui is a regulator of the menstrual functions and is a most astonishing tonic for women. It cures scanty, suppressed, too frequent, irregular and painful menstruations, falling of the womb, whites and flooding. It is helpful when approaching womanhood, during pregnancy, after childbirth and in change of life. It frequently brings a dear baby to homes that have been barren for years. All druggists have \$1.00 bottles of Wine of Cardui."
WINE OF CARDUI

Distance Traveled by Oases.
As an illustration of the distance colors are carried it is noteworthy that the fumes and exhalations from the sulphur springs of Colorado can be distinguished at a distance of fully twenty miles. The delicious perfume of the forests of Ceylon is carried by the wind twenty-five miles out to sea, while in foggy weather travelers 100 miles from the land have recognized their proximity to the coast of Colombia by the sweet smell brought them on a breeze from the shore.

His Inheritance.
"And now," said Professor Longhanger as he greeted Mr. Henry Peck, "what shall we make of your little boy—a lecturer? He has a sincere taste for it."
"I know he has," replied the male parent; "he inherits it from his mother."
"The Savage's Forebodings."
The savage regarded the first white man thoughtfully.
"If I try to fight him," he said, "he will exterminate me, and if I try to live in peace with him he will cheat me out of everything, and I will starve to death. What chance have I got?"—Chicago Post.



THE TRAVELS OF COLUMBUS.
FIND TWO HIDDEN CRITICS OF COLUMBUS.
AS GOOD AS A PASS!
The New Interchangeable Mileage Books issued by the
Atlantic Coast Line
GOOD OVER 18 LEADING LINES.
They are going rapidly at \$25 per 1,000 miles
CALL ON
nearest junction agent and save time and money
W. J. CRAIG,
General Passenger Agent,
WILMINGTON, N. C.

NOW IS THE TIME TO . . .
Send us your
ORDERS FOR 1903
JOB PRINTING

FREE! This \$50 Prize For Some Subscriber of The Enterprise

The plan of giving away this valuable prize is as follows:
We have printed 1,000 tickets, numbered consecutively and beginning the 1st of October every person who pays \$1 on subscription to THE ENTERPRISE will be given one of these tickets. Those who pay \$1 get one ticket, \$2 two tickets, and so on. It matters not whether you are an old subscriber paying up back dues or a new subscriber paying in advance, every dollar paid counts the same and gets a ticket.
One blank ticket has been sent to a person outside of the State to be numbered, the number to be known to no one but himself. This ticket after being numbered is sealed in two envelopes, these two enclosed in another envelope and mailed to Mr. J. G. Godard, Cashier of the Bank of Martin County, to be kept in the bank by him until all the 1,000 tickets are out, when the one at the bank will be opened and the number announced, and the person holding the ticket with the same number will be given the Steel Range.
If you are already a subscriber to THE ENTERPRISE now is a good time to pay up all arrears and come in advance, getting a ticket for every dollar paid. The more tickets you get the larger number of chances you have at the Stove. If you do not take THE ENTERPRISE now is the best time to subscribe, get the campaign, home and general news, and at the same time have a chance to get this fine Steel Range. The sooner the tickets are cut the sooner somebody will get the Range. Tell your neighbor about this and get him interested.

SEE THE PRIZE ON DISPLAY
AT THE SIMPSON HARDWARE CO.
THIS GREAT WHITE ENAMEL LINE NEEDS NO ADVERTISING. EVERY ONE KNOWS IT'S BEST.

The Enterprise

To Cure a Cold in One Day
Take Laxative Bromo Quinine Tablets. *E. H. Johnson*
Cures Coughs in Two Days. On every box, 25¢.

PARTICULAR MEN
are always pleased with the popular
Collars
They are
"Soft, Comfortable,
GUARANTEED LINEN.
The only collar made with a heavy, 5 ply seam."
RETAIL TWO FOR A QUARTER AND WHOLESALE ANY TWENTY-FIVE CENT COLLAR MADE
Sold by five, up-to-date merchants everywhere, or two complete collars sent by mail, for 50¢.
Van Zandt, Jacobs & Co.,
Troy, N. Y.
A Popular Collar

Model Dyspepsia Cure
Signals what you eat.