

MOST ACCIDENTS WHERE DRIVING CONDITION IDEAL

Review of Last Year's Record Shows Little Excuse For Majority Wrecks

If you are perversely determined to add your name to North Carolina's mounting roster of motor accident fatalities, here are the conditions which will come nearest assuring you a place on the list:

Drive an automobile. A pedestrian has smaller chance. Be a male from 18 to 24 years of age, have more than a year's driving experience, be sure that your machine is a passenger car in good condition, has four-wheel brakes and balloon tires, pick out a straight stretch of State highway on a dry, clear December Sunday between 7 and 8 p. m.; then get glowingly lushed, exceed the speed limit and smash another automobile. If you can't speed, try driving on the wrong side of the road; that's effective, too.

Your chances of getting bumped into limbo are least if you are a woman driver over 55, with less than a year's experience, have physical defects, operate a taxi with solid tires and a gum taillight, overly icy pavements between 7 and 8 a. m., on a snowy Wednesday in February, and confine yourself to smacking street cars.

If you can't afford an automobile in which to cross the Styx, some obliging motorist will very likely catapult you over, if you meet the following requirements: Be a pedestrian between 15 and

64 years old, walk on the roadway and get confused by traffic. If, as a pedestrian, you deem it inconvenient to be bumped suddenly into glory, your best chance of sticking around longer lies in this formula: Be anywhere from 5 to 14 years old, have a physical defect of some sort and limit your relations with motor vehicles to hitching onto their sides. Based on analysis of the 5,417 auto deaths which occurred in North Carolina from 1928 through 1934, the ideal circumstances under which one may or may not shuffle off this mortal coil via the gasoline route are tabulated by the Motor Vehicle Bureau of the Department of Revenue. A composite study of the seven years shows that 95.2 per cent of the drivers involved in fatal accidents were men, the remaining 4.8 per cent women. A total of 94 per cent were intoxicated, while only 2.7 per cent were handicapped by physical defects. Drivers from 18 to 24 years were involved in accidents two and one-half times as often as motorists from 25 to 54 years old, while persons 55 and over comprised only 4.8 per cent of the total. Drivers with experience of a year or more accounted for 69.5 per cent of the total, while those with three to six months constituted only 2 per cent. Speeding caused 19.3 per cent of the deaths, driving on the wrong side of the road 6.6 per cent, and passing other cars on the wrong side caused only .1 per cent. Of the cars involved, 89.14 per cent were apparently in good condition, the largest number, 83.71 per cent were passenger cars, 43.9 per cent had four-wheel brakes and 45.7 per cent balloon tires. The defect responsible for the smallest number of

deaths, .01 per cent, was a bad tail light, while taxis were involved in the smallest percentage, .16. The study indicates that accidents have the greatest tendency to occur in December, probably because of the heavy holiday traffic, 11.4 per cent being noted for this month, while the smallest percentage, 5.8, falls in February. Clear days saw 73.7 per cent, while only .4 per cent occurred during snowy weather. The peak, 7.8 per cent, was reached between 7 and 8 p. m., and the nadir, 1.1 per cent, between 7 and 8 a. m. The greatest number, 74.41 per cent, occurred on dry roads, 55.5 per cent on straight stretches of State highway, while the smallest, 24 per cent, were noted on icy or snowy roads, and only 2.6 per cent at rural intersections. Collisions with other automobiles resulted in 25.9 per cent of the deaths, while crashes with street cars accounted for only .3 per cent. Sundays had the largest percentage of deaths, 20.7, Wednesday the lowest, 10.6. Pedestrians comprise a smaller percentage of the deaths, but they have their inning, accounting for 1 out of every 3 fatalities. Foot travelers between 15 and 64 years composed 47.6 per cent of these deaths, while children 4 years and under accounted for the smallest number, 7.7 per cent. The figures indicate that 46.4 per cent of the victims were confused by traffic, 37.6 per cent were intoxicated, while the smallest number, 7.8 per cent, had physical defects.

Rotation and Lespedeza Increase Yield of Corn

An increase yield of corn from eight to sixty-three bushels on acre has been secured on the Alexander County home farm during the eight years a definite crop rotation, including lespedeza, has been followed.

SALE OF VALUABLE FARM PROPERTY

Under and by virtue of the authority conferred upon us in a deed of trust executed by L. B. Ange and wife, Mittie Ange, on the 15th day of December, 1925, and recorded in Book X-2, page 193, we will, on Saturday, the 9th day of November, 1935, 12 o'clock noon, at the courthouse door in Martin County, Wil-

DR. VIRGIL H. MEWBORN OP-TOM-E-TRIST

Williamston office at Peele's Jewelry Store, Monday, Nov. 18. Robersonville office at Robersonville Drug Co., Tuesday, Nov. 19. Plymouth office at Liverman's Drug Store, Thursday, Nov. 21. Eyes Examined - Glasses Fitted Tarboro Every Wed.-Sat. Rocky Mount Every Friday

checks
COLDS
and
666
FEVER
first day
HEADACHES
in 30 minutes

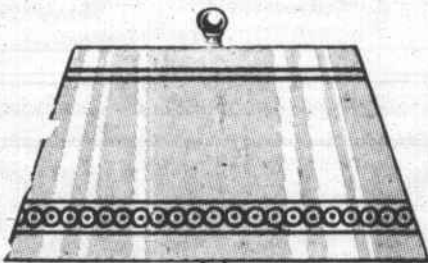
Liquid - Tablets
Salve - Nose Drops

liamston, N. C., sell at public auction, for cash, to the highest bidder, the following land, to wit: First Tract: Bounded on the N. by G. W. Brooks land, on the S. by A. W. and H. B. Ange's land, on the E. by Darden Rd., and on the west by S. L. Ange's land; and beginning at a gum in Darden Rd. at H. B. Ange's corner; thence along the Darden Rd. N. 15 E. 1925' to corner of G. W. Brooks' corner; thence N. 71-15 W. 2527' along G. W. Brooks' line; thence along S. L. Ange's line S. 36-45 W. 171'; S. 69-05 W. 971'; S. 39-45 W. 672'; S. 45-45 W. 850'; S. 50-25 W. 433' to corner of A. W. Ange's land in Jordan Thicket Rd.; thence along A. W. Ange's and H. B. Ange's line S. 85-16 E. 4300' to the beginning, containing 140.49 acres, more or less. Second Tract: Bounded by lands of Luke R. Browning on N.; H. B. Ange land on S.; Darden Rd. on W. and Luke R. Browning land on the E., and beginning at a gum in Darden Rd., H. B. Ange's corner, thence along Darden Rd. N. 14-55 E. 1950'

thence along Luke R. Browning line S. 55-00 E., 1551' to Luke R. Browning's corner; thence along Luke R. Browning's line S. 1-00 W. 1270' to Luke R. Browning's corner, thence N. 81-35 W. 1780' to the beginning, containing 57 46-100 acres, more or less. Third Tract: Bounded by lands of L. B. Ange on N. W., W. H. Allen on N. E., E. W. Harden on the S. E., and by E. W. Harden on the S., and beginning at a pine stump, corner of L. B. Ange and W. H. Allen; thence S. 71-25 E., 345'; thence along E. W. Harden line S. 33-25 W. 807' to corner of E. W. Harden; thence along E. W. Harden line S. 78-48 W. 570' to corner of E. W. Harden's and L. B. Ange; thence along L. B. Ange line N. 37-00 E. 1125' to the beginning, containing 7 96-100 acres, more or less. Fourth Tract: Bounded on N. by G. W. Blount and H. S. Hardison lands; on S. by E. W. Harden land; on W. by E. W. Harden and C. C. Fagan lands, and on E. by E. W. Harden land; and beginning at 3

white oak, corner of E. W. Harden land, and L. B. Ange; thence along E. W. Harden's line S. 44-00 W., 2905' to corner of E. W. Harden's land; thence along E. W. Harden's land N. 31-00 W. 1815' to corner of E. W. Harden and C. C. Fagan's line, N. 27-00 E. 1965' to corner of C. C. Fagan and G. W. Blount; thence along G. W. Blount and H. S. Hardison line N. 74-00 E. 225' to corner of H. S. Hardison; thence S. 2-13 W. 1852' to the beginning, containing 157 66-100 acres, more or less. This land is sold subject to all unpaid taxes. This sale is made by reason of the failure of L. B. Ange and wife, Mittie Ange, to pay off and discharge the indebtedness secured by said deed of trust. A deposit of 10 per cent will be required from the purchaser at the sale. This the 1st day of October, 1935. INTERSTATE TRUSTEE CORPORATION. c15 4tw Substituted Trustee. Durham, N. C.

This indirect 3-Lite Lamp \$12⁶⁵



\$13.05 on convenient monthly terms

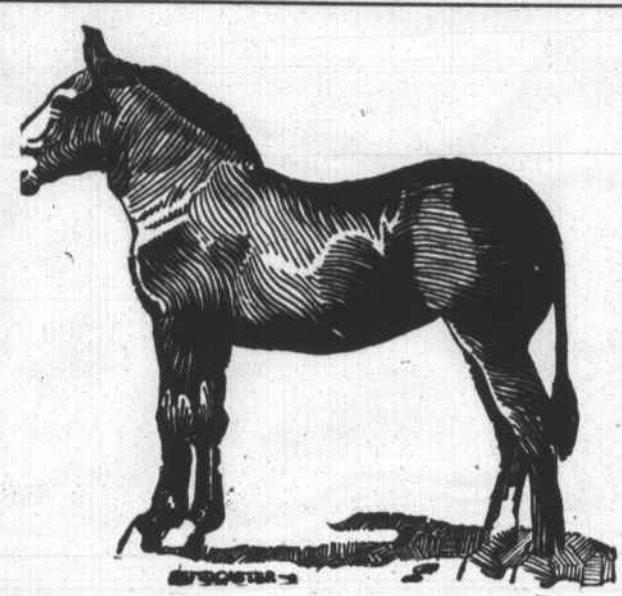
A LAMP which adequately combines your three light needs--generous, but soft localized lighting necessary when close eye work is being done; a decreased light when more casual seeing is the order; and a still more diffused light which is so charming for the quiet after-dinner or music hour!

This scientifically designed lamp meets your decorative requirements as well as your sight requirements. Complete with "Three-lite" Mazda Lamp.



The tag above is your guarantee that this lamp has passed all of the rigid tests and inspections to meet the specifications furnished by the Illuminating Engineering Society.

For Sale by Virginia Electric & Power Company or VanDyke Furniture Company B. S. Courtney



NEW MULES

Our first car of mules of the season arrived last week. We consider this car the best ever brought here. Mules all young and well-broken.

R. C. DAVIS

Harrison Bros. Stables WILLIAMSTON, N. C.

...but, after all is said and done, it's the cigarette itself that counts ... the question is, does it suit you?



Now, when it comes to a cigarette that will suit you... you want to think whether it's mild, you want to think about the taste

That Chesterfields are milder and taste better is no accident...

The farmer who grows the tobacco, the warehouseman who sells it at auction to the highest bidder, every man who knows about leaf tobacco will tell you that it takes mild, ripe tobaccos to make a good cigarette.

In making Chesterfields we use mild ripe home-grown and Turkish tobaccos.

Outstanding .. for mildness .. for better taste