

Poultry Sales at High Figure in County

Cooperative Sales Alone in 10 Years Are Near \$100,000

Shipping their first carload of poultry cooperatively 10 years ago last spring, Martin County farmers started what has proved a valuable side-line, records in the office of County Agent T. B. Brandon show.

About 1925, Martin farmers joined in with their Beaufort neighbors and loaded a car in Washington. Just how many pounds of chickens farmers in this county sold there is not known definitely, but it is believed by those who made a survey then that Griffins Township farmers are said to have made extensive deliveries at that time. The response given the call for cooperative loadings in Washington was sufficient for Agent Brandon to arrange shipments from this county the following year. Records show that Martin farmers sold 17,590 pounds cooperatively that year, receiving \$4,417.50. Each year showed an increase, and by 1929 farmers in this county were delivering and selling to the contracting cars 74,903 pounds of live poultry. That year was a banner season, the farmers receiving \$18,036.68, an all-time delivery and price record.

Last season Martin poultry raisers sold 62,921 pounds of live poultry for \$11,124.26 cooperatively.

Beginning in 1926, Agent Brandon has contracted and booked

REAL MONEY

Poultry sales made cooperatively in this county since the first cars were operated in 1924 are as follows:

1924	6,000	\$ 1,329.00*
1925	23,000	5,060.00*
1926	17,590	4,417.50
1927	28,173	6,194.84
1928	34,959	6,898.28
1929	74,903	18,036.68
1930	53,802	11,292.39
1931	59,605	9,935.04
1932	63,909	9,219.68
1933	41,976	4,167.34
1934	6,430	661.22*
1935	45,799	6,758.88
1936	62,921	11,124.26

Totals 519,063 \$95,086.11
* Estimated.

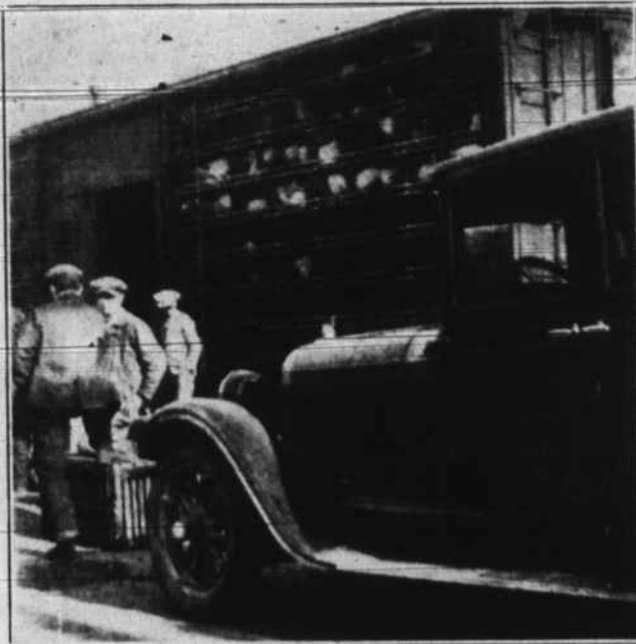
all the cars, with the exception of 1934, when the Roanoke Exchange handled the shipments. That was a bad season and hardly more than 6,431 pounds of poultry was shipped cooperatively from the county. The old schedule was placed back in effect in 1935, and the farmers sold 45,799 pounds for \$6,758.88.

Total poundage, estimating the deliveries for the years 1924, 1925 and 1934, shipped cooperatively from this county since the cars were first operated, runs well over half million pounds, netting the farmers nearly \$100,000.

In addition to the ready market created by the cooperative selling the operation of the cars has helped to maintain local market prices and relieved congestion.

The successful operation of the cars has not been without trou-

COOPERATIVE POULTRY LOADING



Cooperative poultry shipments, such as the one pictured here, are rapidly becoming a sizeable business in this county. During the past 10 years, Martin farmers have delivered to the cars over half million pounds of chickens, receiving just about one hundred thousand dollars.

ble, however, for the hucksters, or small-scale operators, have done nearly everything in their power to turn farmers against the cooperative selling plan. These small-scale operators would up their prices 1-2 cents on the days the cars were loading, when just a few days before they would be paying anywhere

from 3 to 5 cents below the market prices established by the cars. Fortunately, however, comparatively few farmers patronized the hucksters, and the cars have been able to operate with success.

These cars have been operated without profit to the county agent's office, the contract price

Industrial Market For Farm Products Forecast by Ford

Chemical experiments in the laboratories of the Edison Institute at Dearborn have shown that soybean oil can be used to advantage in manufacturing enamels, varnishes and house paints; linoleum and oilcloth; printers' ink, glycerin, fatty acids soap, foundry sand cores, vegetable shortening and oleomargarine; that soybean meal be used to make excellent molded parts, glues and other adhesives, water paints, core bonds, and plywood glues, and that the fiber of the soybean is useful in making pressed boards for box manufacture and furfural.

The Ford Motor Company cooperates extensively by making some of the parts for the Ford car and truck from soybean plastic—among them the horn buttons, gear-shift knobs, distributor parts, light-switch assembly and timing gears. Some of the cars, to be made late this year will have window frames made from soybean meal.

going to the sellers in its entirety. The contractors have made money and lost money, the prices paid in this county on several occasions being higher than the quotations on the northern markets. The contracts were made, and the buyers were forced to abide by the terms.

Sympathetic Service

Anywhere

Anytime

Funeral Directors and Embalmers

Night Phone

147



Ambulance Service Anywhere Anytime

Day Phone

79

Biggs Funeral Parlor

Williamston, N. C.