

New Chevrolet On Display Saturday

Added safety, greater driving ease and fresh re-styling high-spot the 1951 Chevrolet which goes on display nationally at dealer showrooms on Saturday, December 9.

ations that make the car appear much longer and lower than any previous model. The Powerglide automatic transmission, Chevrolet's sensational driving advance, has been refined for the latest models, although remaining fundamentally the same flexible driving control that has already enrolled a quarter of a million satisfied owners. It will again be optional on De Luxe models only.

Fourteen passenger body types are included in the 1951 line. Two- and four-door sedans will be available in Styleline and Fleetline series. All sedans and the sport coupe will come in De Luxe or Special trim. A convertible coupe, all-steel station wagon and the Chevrolet Bel Air, which has scored so sensationally in popularity, are exclusively in the De Luxe series. The business coupe will be available only as a model in the special series.

In addition to more luxurious interior treatment Chevrolet is offering a more beautiful and attractive assortment of colors. The options, which include two two-tone combinations, are livelier than ever.

The new "Jumbo Drum" brakes headline the qualities of the car directed toward safer operation. Quicker emergency stops are assured by a brake which involves considerable departure from past design. Every brake shoe, fitted with the long-life bonded lining made famous by Chevrolet, is self-energizing in both forward and reverse travel, giving a consistent, surge-free operation that will please drivers.

New brakes also qualify as an aid to driving ease. Tests show 25 per cent less pedal pressure required in stopping at given rates of speed. Better brake seals and

Fresh Chevrolet Styling Imparts Lower Lines



The Styleline De Luxe four-door sedan is one of lower appearance. Radiator grilles have been simplified models introduced by Chevrolet as its passenger field, the accorative body moulding lowered and car line for 1951. Notable in this picture are the rear fender crowns raised. Models also offer added design improvements which accentuate a longer, safety.

virtual elimination of the possibility of brake grabbing are other advantages.

Of almost equal interest among safety features are recessed control knobs in the driver's compartment. All protrusions are now set below the smooth contours of the instrument panel. Shielding of the windshield from instrument light reflections is as well provided by a rounded ledge above the panel. Subdued lighting of dials for nighttime driving is still another safety asset.

Important as it will affect parking is an increase in steering gear ratio. Other points worthy of mention under driving ease are new convenience of controls, relocated brake pedals, reduced vibration through greater torque tube rigidity and a new method of propeller shaft balancing in production.

Appearance-wise the improvement is discernible even to a casual observer. Changes both at the front and rear enhance the impression of ruggedness and room. The radiator grille has been restyled and simplified. The design now consists of three horizontal bars, the lower two extending further across the fenders to form a circular frame for parking lamps. Frontal beauty is addition-

ally embellished by new bumper guards, emblem and hood ornament which carries a jet-craft form.

The crown of the rear fenders has been raised to increase the sleek, flowing lines of the body. Fenders now mount the combination stop and tail light, with a newly styled trunk lid ornament and re-designed bumper guards blending into the overall effect.

The De Luxe and Special series will again be distinctive. Exteriors of the De Luxe bodies have a greater amount of chrome and stainless steel trim and are distinguishable on the highways by a moulding which starts just above the wheel opening in the front fenders and is extended into the doors.

Austin Nichols GREAT OAK BLENDED WHISKEY



\$1.85 pint

The Straight Whiskeys in this product are 2 years or more old, 30% Straight Whiskey, 70% Grain Neutral Spirits; 20% Straight Whiskey 2 years old, 5% Straight Whiskey 4 years old, 5% Straight Whiskey 6 years old. 86 proof.

Austin Nichols & Co., Inc. BROOKLYN - NEW YORK

OLD HICKORY
STRAIGHT BOURBON WHISKY



4 YEARS OLD

\$2.10 PINT
\$3.40 1/2 Qt.

86 PROOF - OLD HICKORY DISTILLING CORPORATION, PHILA., PA.

Mouquin
de luxe
IMITATION
BANANA
Liqueur



Pint \$2.20
Austin Nichols & Co., Inc. BROOKLYN - NEW YORK

Jewelry Specials



Our stocks of jewelry are large enough and have sufficient variety to satisfy and please any member of the family. Visit our store for quality and nationally advertised jewelry.

SPECIAL LOW PRICES

On All Jewelry Items

J. L. Peele Jewelry Co.

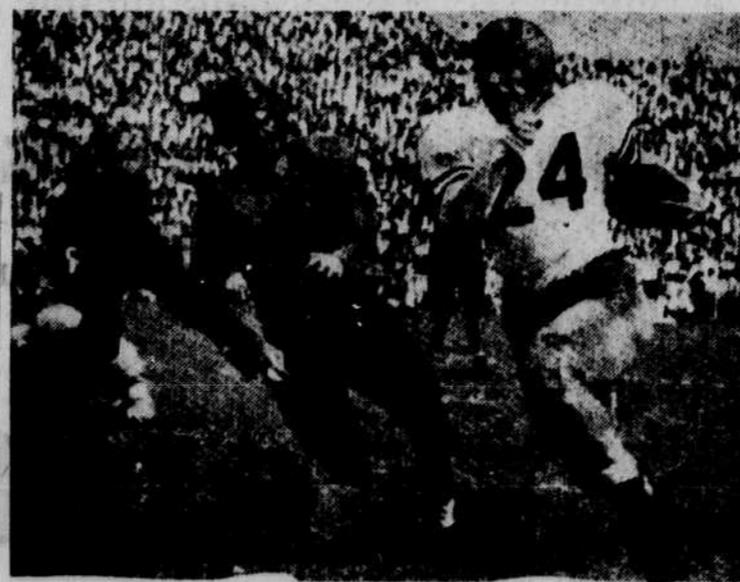
CORN & SOY BEANS WANTED

MARKET PRICES PAID
We Shell Every Day.

MARTIN FEED MILL

Telephone 2609

PRESENTS
INTERESTING FACTS ABOUT NORTH CAROLINA



FOOT BALL

The favorite sport of practically all North Carolinians is foot ball and the State has produced many great All-Americans. Considered the greatest of these is Charley (Choo-Choo) Justice, who blazed a trail of glory over the country, unsurpassed in North Carolina foot ball history. The teams of North Carolina State, Duke, Wake Forest and the University of North Carolina are always considered serious opposition by their opponents.

Guaranty Bank & Trust Company

Member of Federal Deposit Insurance Corporation

EXECUTRIX' NOTICE
North Carolina, Martin County.
Having this day qualified as executrix of the estate of Nonie Ruffin, deceased, this is to notify all persons having claims against said estate to exhibit them to the undersigned within one year from this date or this notice will be pleaded in bar of their recovery. All persons indebted to said estate are asked to make immediate settlement.
This the 22 day of November, 1950.
Millie Outlaw, executrix of

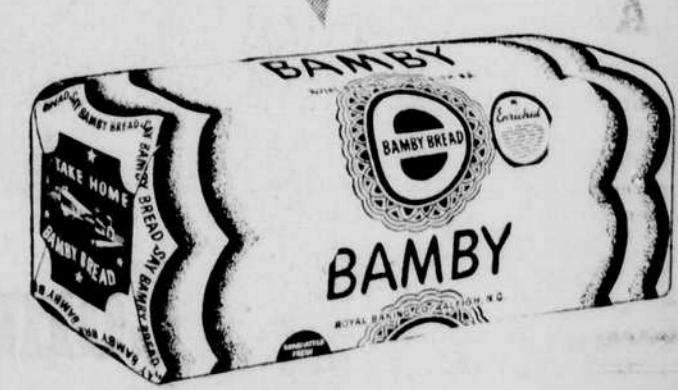
Nonie Ruffin.
no 23-30 de 7-14-21-28
NOTICE
As Executors of the Estate of W. H. Manning, deceased, we will offer for sale at public auction for cash at the W. H. Manning Farm, two miles south of Hassell, N. C., Martin County, on the Gold Point Road, at 10:00 A. M., on Wednesday the 20th day of December, 1950, various articles of personal property, livestock, farming machinery and tools, hay and corn, including the following: 6 mules, 5 horses, 8 sets oil curers, 5 wheel

plows, 5 carts, 3 wagons, pearnt sticks, several sets of tractor cultivators and other tractor drawn equipment, 1 Case tractor, 1 Massey-Harris tractor, a large quantity of corn and hay, and many other items of farm equipment. The above articles may be inspected at any time prior to the sale.
This the 23th day of November, 1950.
X. E. Manning,
Harvey D. Manning,
Executors of W. H. Manning,
no 30 de 7-14



Thanks!

"After visiting your spotless bakery, and seeing how wholesome-good Bamby is baked, I felt like expressing my appreciation by a big 'Thanks!'"
You, too, once you try Bamby bread and see how it's made, will depend on Bamby for satisfying meals.



TAKE HOME BAMBY BREAD

NOTICE!

1950 TAXES ARE
NOW PAYABLE AT PAR

Pay Now Before Interest Is Added

M. L. PEEL

Martin County Tax Collector