

Both Britain And France Now Face Desperate Crises

Germans and Japanese Are Competing With Them In World Trade

Washington, D. C.—Both Britain and France are facing desperate crises, the outcome of which may affect every U. S. taxpayer directly, and it is considered vital by some Administration officials that the American public know the score on the present international situation. In Great Britain the crisis is one of exporting goods. Germany and Japan, old rivals on world trade routes before the war, are moving in on the British market.

just embarking on an expensive rearmament program. British exporters find Japanese textile exporters who can produce goods cheaper, than the British can in Lancashire, moving rapidly into the post-war British markets. They see Jap machinery being sold in South America, and many other signs of the changing times. It is mainly because of this revived Japanese production that Britain wants increased Jap trade with Red China, and wants to maintain trade with China herself.

Germany too is fast reviving after the recent defeat. German goods are steadily offering British exporters serious competition. This situation combined with inflation higher prices, and little inflation thus far in England, which means lingering low prices, is posing a major economic crisis. The British must pay inflated, increased prices for raw materials outside England, to manufacture goods from while selling the goods



Frederic March obstinately rejects schoolteacher Nancy Davis' suggestion that his son, Bobby Hyatt, needs glasses in a scene from "It's a Big Country," attraction at the Viccar Theatre Thursday and Friday. Stressing the pride and loyalty of Americans of varied extractions, the unusual picture is unfolded in eight episodes, with many of M-G-M's top personalities in starring roles.

at their still low price ceilings. The result is an unfavorable trade balance, which as everyone knows is the life and death struggle of the British—a struggle they have been enduring longer than any other people.

For France the crisis is just as dangerous. In Indo-China the French are pouring out a billion dollars a year, which is a tremendous item in that country's budget. Losses sustained by the 40 million Frenchmen in that war, have equaled in number of those sustained by the U. S. in Korea. Thus the relative cost is higher in manpower. The Communists are strong in France, though held down and their continued insistence that the Indo-China fighting be stopped is having some effect.

In addition the French also are just now embarking on their rearmament program, and this is causing inflation and hardship on the taxpayers. It has already caused one government to fall and may defeat others. The crisis is real and pressing, and the war in Indo-China discouraging and heartbreaking. It may not be long before the French want active U. S. assistance in Indo-China. They are now considering a truce. Thus the country's two major European allies are hard pressed at the moment in the fight against Communism. Under these circumstances, State Department, military and other Administration officials want the public to know why U. S. aid is needed and want the public to understand why it is being continued.

The accepted school of thought—that President Harry Truman would not run again this year—is being increasingly questioned these days, and the opinion of some newspapermen in Washington is that the President would be strongly tempted to make the race again if he thought Ohio's Senator Bob Taft was going to get the Republican nomination. This is based on a clear piece of

'Guard Changing'



MUCH POMP and circumstance attends the present day "changing of the guards" ceremony in Vienna when the Russians and other occupation units turn over policing of the inner city. In this photo, U. S. Brig. Gen. William T. Fitts graciously shakes hands with Red Gen. A. A. Poreyko as they exchanged duties. (International)

political strategy, which the Truman circle thoroughly understand, and which goes like this:

If General Dwight D. Eisenhower gets the Republican nomination, he will be a hard man to beat, but more than that, he will certainly carry parts of the South against the President. Since the President's entry into the political race will mean a Southern split, possibly more serious this year than in 1948, the President can only win in 1952 if he can win outside the South. Against Eisenhower his chances of doing this

Garden Time In Eastern Carolina

The new seed catalogs are now coming out in all their glory giving due notice that garden time is just around the corner. If you haven't received your favorite catalog yet, be sure to send for it at once. Old varieties, new varieties, hybrids, and novelties are portrayed in such glowing terms and illustrations that the imagination of every gardener is stirred to a point where he begins to dream of the super garden that he will have next season.

If you have any seeds left over from last year that you intend to plant this year, they should be tested for germination before planting time. The seed laboratory of the N. C. Department of Agriculture, Raleigh, will test them free of charge for you can do it yourself at home. Small seeds may be placed between moistened paper towels. Larger seeds are slim; the Democrats will need the solid South to have a chance of defeating Ike.

But against Taft, Mr. Truman thinks he stands a good chance in the rest of the country, outside the South. I he could split the South, carry half of it while Taft or a third candidate carried half, he would nullify its block-vote importance, and then the race would be decided in the non-Southern states. Mr. Truman could probably come close to splitting the South, and if he could beat Taft in the rest of the country, could be elected President for what would amount to a third term. Taft's campaign managers are eager that Mr. Truman be the nominee against the Ohioan. They would welcome a Truman-Taft race in 1952.

The final plans of the President may hinge in great measure on the outcome of the Republican nomination campaign.

Despite some opinion to the contrary, and although nineteen months have elapsed since the Korean fighting began, the country is still not mass-producing a new medium or heavy tank, and it looks as if it will be a year before it is. The mediums which have been produced were built on old hulls, existing at the outbreak of war in Korea. No heavies were remade, however, and no new, modern mediums or heavies have yet come into mass production.

The T-41, Walker Bulldog, a light tank, is now being mass produced.

blotters and put on a dinner plate with another plate inverted over it. These should be kept at room temperature. For large seeds such as beans or corn, wet paper towels are better than blotting paper. The viability of most vegetable seeds can be determined in from one to two weeks.

The new catalogs are listing a number of new varieties and novelties that are worthy of trial by home gardeners. Contender, Topcrop and Wade are new varieties and novelties that are worthy of trial by home gardeners. Contender, Topcrop and Wade are new varieties of snapbeans; Salad Bowl, a new variety of leaf lettuce; Rio Sweet, a mildew-resistant cantaloupe; Peerless, a large seeded lima which will set a good crop in all portions of North Carolina; Conco, a new watermelon of excellent quality; New Hampshire Midget, a new icebox watermelon; Wando, a heat-resistant garden pea; Santee, a downy mildew resistant cucumber; and a number of hybrid tomatoes which may or may not be as good as the standard varieties that you have been growing.

Roosevelt Pastor Going To Butner

Raleigh.—Rev. Alban Richey, a former pastor of the late President Roosevelt's home church at Hyde Park, and current rector of St. Jude's Episcopal Church in Monroe City, Missouri, has been appointed chaplain of the Butner Alcoholic Center, it was announced today by S. K. Proctor, executive director of the N. C. Alcoholic Rehabilitation Program.

Bringing with him a wealth of experience in both pastoral and personnel work, Rev. Richey became interested in the North Carolina Program through John S. Ruggles, Southern Pines insurance executive and chairman of the ARP alcoholic committee. He will assume his duties at the ARP Center in March.

The new Butner chaplain comes to the ARP Center as a man and a counselor strongly interested in alcoholism as an illness and the alcoholic as a sick person worth helping.

ARP Director Proctor welcomes Richey to the Program staff as "another member of the State's alcoholic rehabilitation and education team that is gaining national recognition for its treatment program and public information service."

Artificially Bred Stock Improving

Does artificial breeding give good results?

A Union County farmer, Bradley Reid of Route 3, Waxhaw, has an answer to that question.

According to T. C. Blacock, dairy specialist for the State College Extension, a grade Guernsey heifer that resulted from artificial breeding to the registered Guernsey bull Beechwood Ruler.

She was in turn bred artificially and freshened at exactly two years of age. In 305 days on twice daily milking, she produced 8,350 pounds of milk and 377 pounds of butterfat.

"This is truly outstanding production for a first calf heifer and represents almost twice the total amount of milk produced by the average cow in North Carolina," comments Blacock.

Another dairyman, Gordon Baker of Catawba County, has two Guernsey heifers from artificial breeding that recently freshened, both with heifer calves. The first heifer to freshen, sired

by Elmcrest Peter Grey, is producing more than 28 pounds of milk a day, while the other heifer, sired by Friscilla's Fashion Duke, is averaging more than 34 pounds of milk per day. Both of these animals are producing as much milk as their dams, and Baker is sure they'll soon be outmilking them.

Things To Watch For In the Future

A new, multi-purpose incandescent light offers interchangeable spot or floodlight. The unit is free from glare, the manufacturer claims, making the lamp particularly useful for store displays. "Lazy Susan" type of tray for refrigerator is said to make it easy for housewives to reach these foods always in the back of the box. Inflatable bumper guard has been designed to ease shocks and protect bumper. Available in variety of colors including chromium to blend with bumper.

Do you give your non-washable clothes a good airing once a week?

ANTIBIOTICS & B-12 - mixed with All MARTIN FEEDS.



The Profit Comes from the Feed.

Improved STOCK FEED



No matter how wonderful the stock, no matter how wonderful the weather, your profits at the end of the year won't be any better than the feed you give. SO, make this a BANNER YEAR by ordering our tested, scientifically blended mix, geared to meet your every need.

Martin Feed Mills

It takes a smaller share of your wages

to buy residence telephone service today than it did 10 years ago . . .

The price you pay for residence telephone service today actually takes a smaller percentage of your wages than in 1942. Telephone rates have increased much less than the other things you buy and telephone rates have not increased nearly as much as the prices the telephone company pays for the material, labor and equipment necessary to expand its service and keep it good.

The Carolina Telephone and Telegraph Company has petitioned the North Carolina Utilities Commission for an increase in rates. The Company must have an increase in rates if it is to continue to provide a dependable and growing telephone system capable of meeting the service needs of Eastern North Carolina.

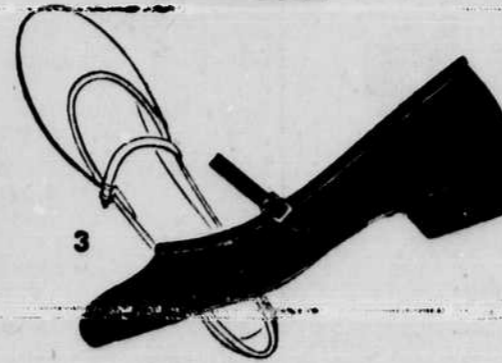
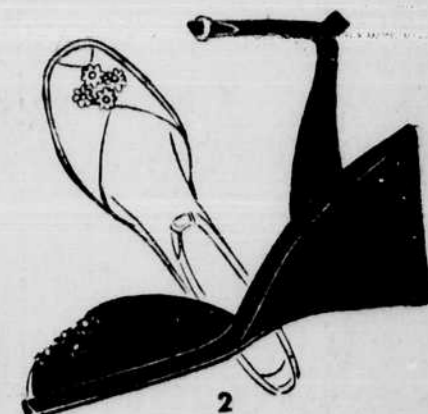
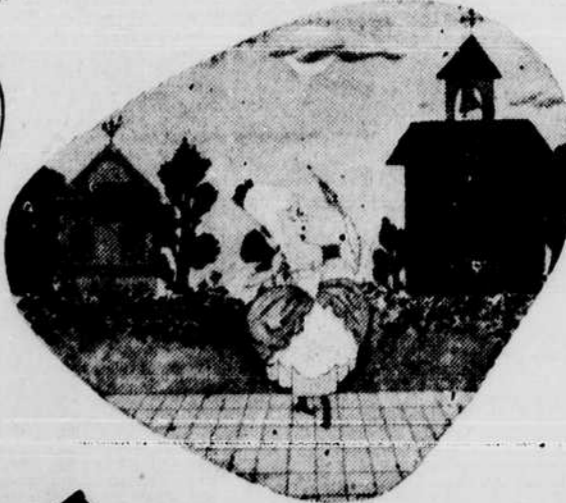
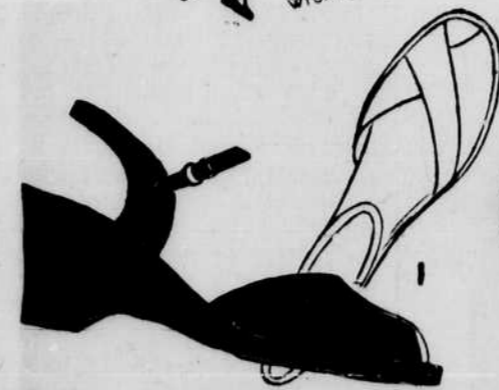


Carolina Telephone And Telegraph Co.



BELK — TYLER'S

Invites You To Put Yourself In Their New Smart Shoes



\$6.95

\$8.95

1 Scarf. Mid-heel sandal, cyclamen with pink. Sizes 4-10

2 Deltiah. High heel, with jewelry detail. Eggshell with grape purple. Sizes 4-10

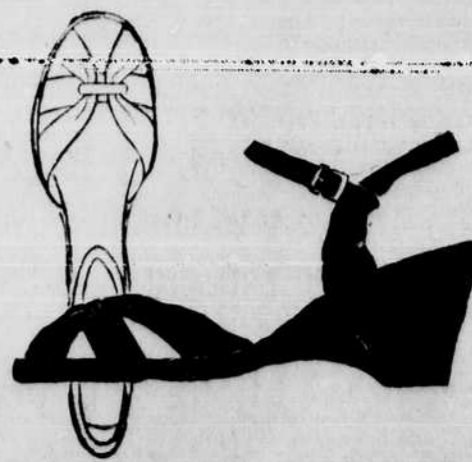
3 Spur. Low heel, with new "cowboy" heel. Wild wheat with green. Sizes 4-10

4 Matching Bl-Tone Handbag

captivating in tone-on-tone

BEAUTY BLENDS in soft kidkin

Here's gay repartee in color, Fortunet's soft, soft kidkin Beauty Blends. In elegant dress wedge, in soft suit shoe, in new "cowboy heel" semi-flat for sport, these highlight your endless selection in Fortunets for every wear, everywhere. See them in wonderful new color combinations; Summer on the light-as-thistle Floating Step.



BELK — TYLER'S

Your Shoe Shopping Center

Fortunet SHOES WITH THE FLOATING STEP

Featured in full color in Harper's Bazaar and Charm