

Air Streams Are Rated A Mystery

The Navy has undertaken an investigation of the ghost rivers of air which were first discovered during World War II. These streams of air, which move several hundred miles an hour, have been responsible for many strange experiences of pilots.

Crews of B-29 bombers over Japan in World War II often reported they encountered strange atmospheric antics at 20,000 to 30,000 feet. They reported they suddenly seemed to stand still in mid-air. On other occasions, the air outside their planes suddenly registered tropical warmth and changed back quickly to arctic cold.

The cause of these jet streams is not yet definitely determined, although one explanation is that they are caused by warm air from the equator colliding with frigid air from the polar regions. To test them more thoroughly and to gain accurate instrument measurements of their velocity and direction, the Navy has assigned two pilots the job of finding these air streams. The films, which will be focused on dials of instruments, which record the readings every five seconds, will be sent to the University of Chicago for study and interpretation.

Now Is The Time to go to COURTNEY'S For FURNITURE



FOR TOP MARKET PRICES Sell Your Hogs Now To

WILLIAMSTON PACKING CO.
George M. Peel & Russell Griffin
New Props. Tel. 2822



TELEVISION ON WHEELS—You won't find it in the dealer's showrooms but something new in automobile body design and construction has been worked out by Fisher Body engineers for NBC television which for the first time will permit the immediate televising of pictures taken from a moving car. Here shown is a Cadillac 75 sedan engineered especially for the televising of General Eisenhower's Presidential Inauguration parade. A full crew, four technicians and a driver can ride in the car while telecasting. The camera man works through a turret opening cut through Fisher Body's famous turret top at the right front corner while the transmitters send out a beamed wave to a receiver worked by a man in the turret opening at the left rear of the body. This picture, in turn, is relayed to a fixed receiver and then by coaxial cable to the network. The car carries almost a ton of special television equipment.

Business Expected To Plow Back Earnings
American business is expected to plow back more of its earnings than ever before into expansion and improvement during the first quarter of 1953. U. S. business is expected to invest around \$6,500,000,000 in new plants and equipment during the first three months of this year. Manufacturers are expected to have laid out \$12,500,000,000 for new plants and equipment by the end of this year. Over land which is now in Central Africa.

State College Has Timely Answers

What is the purpose of the annual State Farm Census? The main purpose of the State Farm Census, now in its 34th year, is to meet the local demand for annual county statistics on agriculture in greater geographic detail than has been provided by any other service. The Federal agricultural census does not provide data by counties at sufficiently frequent intervals to meet the statistical needs of the county and State agricultural agencies, and other users of this service.

There is a strong demand for agricultural statistics covering farming operations on the county level. This information is requested and used by individuals, public agencies, and by local groups as well as State and national organizations. The annual collection of county farm facts enables agricultural workers at all levels to prepare effective farm programs which are in the interest of the farmers' welfare. In a basically agricultural State any improvement in the economic well-being of farmers means an improved economic status for all other citizens as well.

The State Farm Census provides the only satisfactory basis for compiling reliable annual county estimates of crop acreages and other farm facts. Thus the increasing demand for annual county estimates of the acreage and production of all crops is being met. The need for reliable county estimates is especially emphasized by acreage allotment and control programs. These programs can be more fairly administered where annual Farm Census records are available.

Commercial meat production during the first 10 months of last year was 62 per cent larger than the same period in 1951.

Say North Pole Moving Around

Drs. Walter Munk and Roger Revelle, of the Scripps Institution of Oceanography, have concluded that the North Pole moved about 10 feet toward Greenland between 1900 and 1925. Since that time, however, they think it might have retreated by a foot or two. This information will not revolutionize the world, although it is interesting to note that the two oceanographers believe that the amount of water in the sea alters the distribution of matter and mass in our early planet.

In other words, the theory is that rises and falls in sea level caused by melting ice on Greenland, or perhaps melting Antarctic ice caps, change the map of the planets and lengthen the days and, sometimes, move the poles.

One theory is that the poles, or more correctly, the lands under them, have shifted greatly since the earth was formed. The South Pole is said to have been located

State College Has Timely Answers

What is the purpose of the annual State Farm Census? The main purpose of the State Farm Census, now in its 34th year, is to meet the local demand for annual county statistics on agriculture in greater geographic detail than has been provided by any other service. The Federal agricultural census does not provide data by counties at sufficiently frequent intervals to meet the statistical needs of the county and State agricultural agencies, and other users of this service.

NEW AND USED FURNITURE ANTIQUES WIER FURNITURE EXCHANGE
(Store with the Red Flags) Washington Street

Better Farming, Better Living

Better farming is paying off in better living for the James Hopper family of the Lawsonville community in Rockingham County.

The family recently moved from a dilapidated home into its new seven-room, ranch-style, brick structure built on the farm. Hooper was 1950 State winner of the Soil Conservation Contest for Negro farmers. His score was 93.61.

According to T. D. Williamson, Rockingham County Negro county agent for the Agricultural Extension Service, Hooper has followed extension recommendations in his farming program for the past several years.

He has grown alfalfa and red clover for hay for a number of years, and he was the second Ladina clover-orchard grass permanent pasture. He began dairying by producing Grade B milk but later improved his facilities to permit production of Grade A milk.

Hooper believes that better farming doesn't mean much unless it brings about improvement in family living conditions on the farm.

"Hooper works with all agricultural agencies and takes full

Things To Watch For In the Future

Next fall's corn harvest will find a combined picker-sheller in the field, capable of driving between two rows of standing corn and pouring their kernels into an accompanying wagon. . . . A cloth chemically treated to wipe dust-attracting static electricity off phonograph records, table tops and TV screens will be available as soon as the manufacturer fills heavy industrial orders. . . . Small TV stations will be able to rent costly transmitting tubes instead of buying them outright, a big maker promises. . . . Doll shoes made of molded plastic come in six sizes, to fit dolls from 13 to 25 inches tall. . . . Merchants are offered a thin gold ribbon, which can be written through with pen

advantage of the help available to farmers," says the county agent. "His farm is an outstanding example of what careful planning and hard work can do for a poor, run-down farm."

or pencil and pasted on to personalized small articles with their buyers' names or initials. . . . An air-filter checker-upper, to be unveiled at the Heating Show just beginning in Chicago, tells how much dirt the filter has removed.

Some people believe anything you tell 'em if you whisper it.

To Relieve Misery of **COLDS** take 666 LIQUID OR TABLETS - SAME FAST RELIEF

Visit Heilig and Meyers Williamston for the "Best Buys In Furniture"

NEW LOCATION

I have moved my office from Elm Street to the building across street from Taylor's Dairy in Williamston.

Phone 2808

Night Phone 3238

DR. A. R. PEELE, Veterinarian

Mules

We Buy, Sell and Trade **HARRIS BROS.**

Highway 17

Williamston, N. C.

Phone, C. F. Harris,

2945-9



There's real, economical convenience when you pay by check. Fill it out and post. That's how easy it is! No chance of overpaying. No doubts about payment, either. Your cancelled check is all the receipt you need. Be safe! Open your account today. Don't delay!

Guaranty Bank & Trust Company

ARE YOU WONDERING . . . What To Use On Your Peanuts This Year?

We Highly Recommend That You Try

LAND LAX

We are Martin County Agents for LAND LAX and have been able to get our tonnage increased about 200 tons which will enable us to take care of some new customers.

We have sold LAND LAX for a number of years and have always sold out — so PLACE YOUR ORDER EARLY!

Slade — Rhodes & Company
HAMILTON, N. C.

YOUR V.C. ARMOUR'S, RELIANCE, INTERNATIONAL, WEAVER, STANDARD, AND BAUGH FERTILIZER DEALERS



86 Proof
THE STRAIGHT WHISKEYS IN THIS PRODUCT ARE 4 YEARS OR MORE OLD. 25% STRAIGHT WHISKEY, 75% NEUTRAL SPIRITS, DISTILLED FROM GRAIN.
WOODRUM & WORTS LIMITED, PERDU, 1950

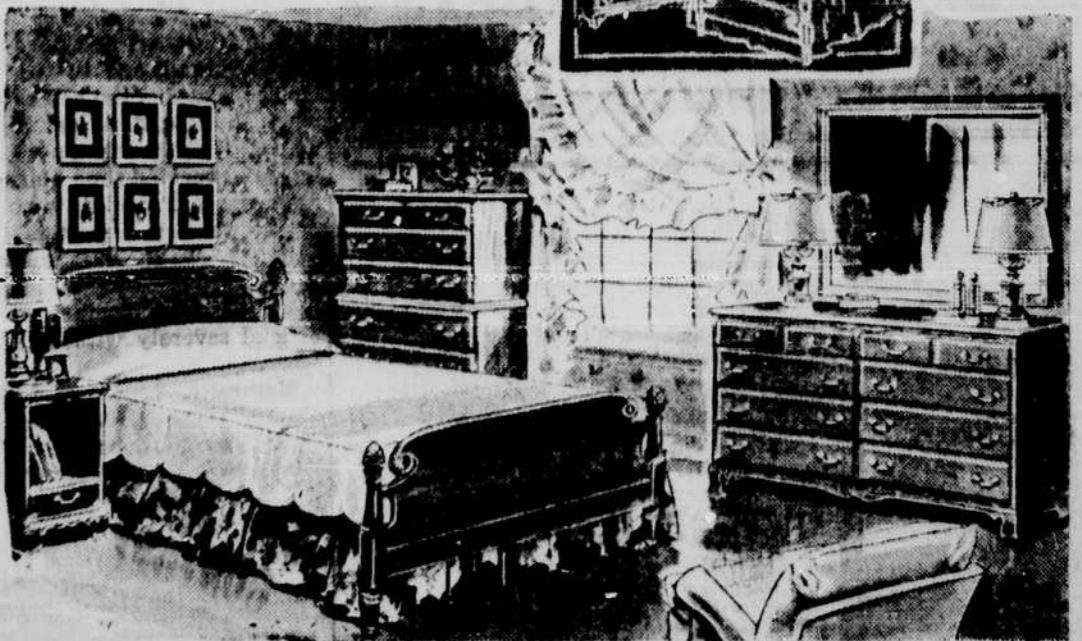
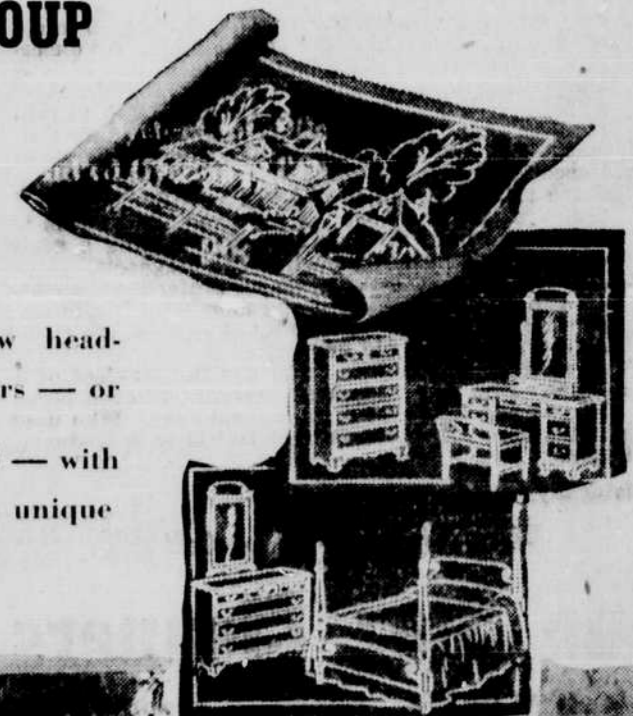
CHOOSE A GROUP

"Made" for your home from our selection.

MODERN GROUPS

with large mirrors, low headboards and lots of drawers — or

TRADITIONAL GROUPS — with poster beds, vanities and unique chests of drawers.



Mr. Bell Has Gone To The Furniture Market - So We Must Prepare For New Shipments - Due To Arrive Soon - So We Are Having A Store-Wide Clearance. Everything Must Go!

Heilig - Meyers Furniture Co.