

## ENGELHARD FLOURISHING BECAUSE OF PROGRESSIVE CITIZENS AND MERCHANTS

**Hyde County Town Has What It Takes to Make a Town Grow; Wants More Stores Because More Stores Bring More People, and More People Make More Business; Growth Astounding in a Short Period**

Engelhard lays claim to being the trading center of Hyde County and well it might be, being situated on a good waterway at the terminus of a hard surfaced road, some 22 miles north of the county seat of Swan Quarter, and is served with a modern ice plant, that furnishes electric current for the town and has its power lines extended to Swan Quarter and several intermediate points. Its merchants say they never have fought competition, because more stores bring more people to town.

Engelhard has long been served with excellent stores, progressive business men, and an extraordinary banking institution, but its great period of development, generally speaking, began when the Pamlico Ice and Light Company opened its modern plant about two years ago. The Pamlico Ice and Light Company is built with a large storage capacity, and large ice manufacturing capacity, and adequate power to supply the light and power needs of that section for a long time to come. The improved lights have added greatly to the general appearance of Engelhard, which together with a good road, has contrived to make it a busy trading center, and today it has a modern theater showing the latest sound pictures and many other business enterprises, which go with the modern town of today, such as beauty parlors, restaurants, complete service stations and other establishments. Engelhard is the center, too, of a large agricultural section, producing prolific crops of potatoes, corn, soy beans, and the citizens of this section are thrifty—all around, and devote much time particularly, to the raising of poultry and eggs and live stock.

Engelhard has the largest high school in Hyde County—a modern brick structure attended by pupils for many miles around. It has fine churches and the new homes being built show every mark of progress and modern planning. But one of the important things about Engelhard is the fine spirit of hospitality and friendliness that prevails and makes its people seem like old neighbors and friends. Maybe that spirit accounts in large measure for the progress so evident in the town.

### CHAIRMAN OF BOARD OF TYRRELL COUNTY



HON. W. W. WATSON has served for a matter of terms and years as commissioner of Hyde county, and is again chairman of the Board. He is a successful farmer of Lake Landing, and a forward looking citizen who long ago recognized the value of highway connections between Dare, Hyde and Tyrrell. He is quite a political power in Hyde County, and is the type of man who remains strong in politics.

Many people in Engelhard now are discussing the probability of incorporating it and putting its government on a business like basis, in an effort to obtain some advantages not at present available. It is a certainty, however, that the Engelhard section has a rich future before it, because its beautiful location, adjacent to the fine oyster and fish territory, and when made accessible by highway to Manns Harbor, it will serve a huge volume of traffic traveling to and from the Dare County seashore. A Dare County man, P. D. Midgett, Jr., formerly of Wanchese, is associated in the ice and light business with B. W. Godwin of Chuckatuck, Va., and this is further evidence of the close ties of relationship existing between Engelhard in Hyde and the neighbor-

### AN ACTIVE LAWYER IN HYDE COUNTY



HON. O. L. WILLIAMS of Swan Quarter is an able lawyer, one of the few lawyers in the state licensed before the Supreme Court of the United States. He is a tireless worker, does an immense amount of work, and is a former member of the General Assembly. He has passed several measures of much interest in Hyde County and among his legislative acts was which the facilitation of the faster liquidation of defunct banks, which helped to turn thousands of tied-up dollars loose in his section and he also passed an enabling act, whereby the Bank of Engelhard spread its progressive activities to other communities of this section. No picture of Hyde County is complete with O. L. Williams out of it.

hoods of Dare County. Before locating in Engelhard, Mr. Midgett made a survey of Swan Quarter, with a view to locating his plant at that town, but found most all the land owned by a group who held it at prices higher than he thought he might pay. Swan Quarter while having a good harbor, was at a disadvantage in that it is privately owned, and tolls are collected from freight vessels. But Swan Quarter's loss was Engelhard's gain, and Swan Quarter now has the benefit of the good electric light service supplied by the Midgett enterprise.

The Engelhard section has many amusement facilities. Mrs. Kate Credle Makely, former Register of Deeds of Hyde County operates the modern movie show at Engelhard. This one new enterprise brings large crowds to Engelhard. Near Lake Mattamuskeet is Barber's Shanty. It is here that young folks gather for dances. The Barber Shanty is on the paved roads, and brings many people from as far distant as Belhaven and Washington, as well as from Engelhard and Stumpy Point.

One of the most attractive spots in the Lake Mattamuskeet section is D. W. Paine's Mattamuskeet Cabins. These are beautifully sit-

uated on the lake, 17 miles North of Swan Quarter, and an ideal place for fishing parties. The view of the lake is very beautiful, and hundreds of swan may be observed within a few feet of the shore in stately beauty upon the water.

A fine cafe is operated in Engelhard by B. G. Midgett; it is known as the Engelhard Cafe, and this cafe caters to those who like fine oysters and fish. It is located in a new building, most conveniently situated.

C. W. Burrus has the only pool room in Engelhard, and he serves hot dogs, lunches, sandwiches and has gas and oil for sale. He is

located at the Stumpy Point-Engelhard intersection.

R. L. Gibbs is one of the best known and most prosperous citizens of Engelhard. He had a beautiful brick home on the highway as you drive in from the south. He runs a large feed, seed and produce business and sells brick, lime and cement.

Class Gibbs is a citizen one never forgets, either. His name is in big letters all over the place, and there are signs of him everywhere. R. S. "Tony" Spencer is another of the best known men of Stumpy Point. He operates a store, and sells furniture. "Tony" Spencer is a popular man. J. H. Jarvis is president of the

bank, and runs a large general store. He is one of the friendliest fellows in the Southern Albemarle country and spends much time on missions for his community and county. Once having seen Mr. Jarvis, a visit to Engelhard is not complete without a stop at his store. He conducts a large business, with a wide and well assorted stock.

S. S. Neal's store for many years housed a cafe. But his business kept growing. And he recently turned the cafe business over to B. G. Midgett, the fine young man who runs the Engelhard Cafe, and gave more time to his store. Stocks have been enlarged and his gro-

cery and hardware lines are among the best in this section.

Bix Cox is a friendly fellow. He is full of accommodation and easy to like. His Sinclair service station is well located. He is a firestone tire dealer, washes cars, and handles refreshing drinks and ice cream.

R. S. Cox runs a modern soda fountain in his place, sells candy and fruits beside, and carries a line of general merchandise and groceries.

R. D. McKinney runs a shoe repair shop, thus proving Engelhard will also dye your shoes, and will handle any business sent by mail. Miss Hazel Payne is a smart

**Enjoy**

Sandwiches, Soft Drinks,  
Ice Cream, Magazines,  
Pop Corn  
Smokes

**Hazel's Soda Shoppe**

Anex to Theatre  
Hazel Payne, Prop.  
Engelhard, N. C.

Continued on Page 7

*Our Business Is Serving....*

## Hyde County With Ice and Cheap, Dependable Electricity

We pioneered in the ice and electric power field in Hyde county and have put our capital, plus years of experience, plus two years of hard work into this job. We appreciate the response that has been given us and today approximately 200 customers are taking advantage of our rapidly extending power lines and we have developed a door to door ice delivery in all Hyde County.

Pure ice and power are essential to modern day progress. In the strict sense of the term, neither costs the consumer anything. Both effect so many savings, and contribute so much to the health, convenience and comfort of the consumer, that the small item of cost is negligible.

Progressive people everywhere recognize these facts, and make use of such advantages wherever available. Recognizing that Hyde County people were ready and anxious for these advantages, we have prepared to serve all the ice needs of Hyde County, and some surrounding territory.

We are also prepared to supply adequate electric current at rates that compare favorably with other towns.

Ice and power are essential to progress and development. Use them freely.

30<sup>00</sup>

**Save Money, Labor Time, With ELECTRICITY**

See our display of electric fixtures. Notice the low cost. Consider the savings effected—the work performed at low cost and other advantages.

WASHING MACHINES  
Operated for 5 cents an hour

ELECTRIC IRONS  
Operated for 7 cents an hour

ELECTRIC FANS  
Operated all night for a nickel

FANS, TOASTERS

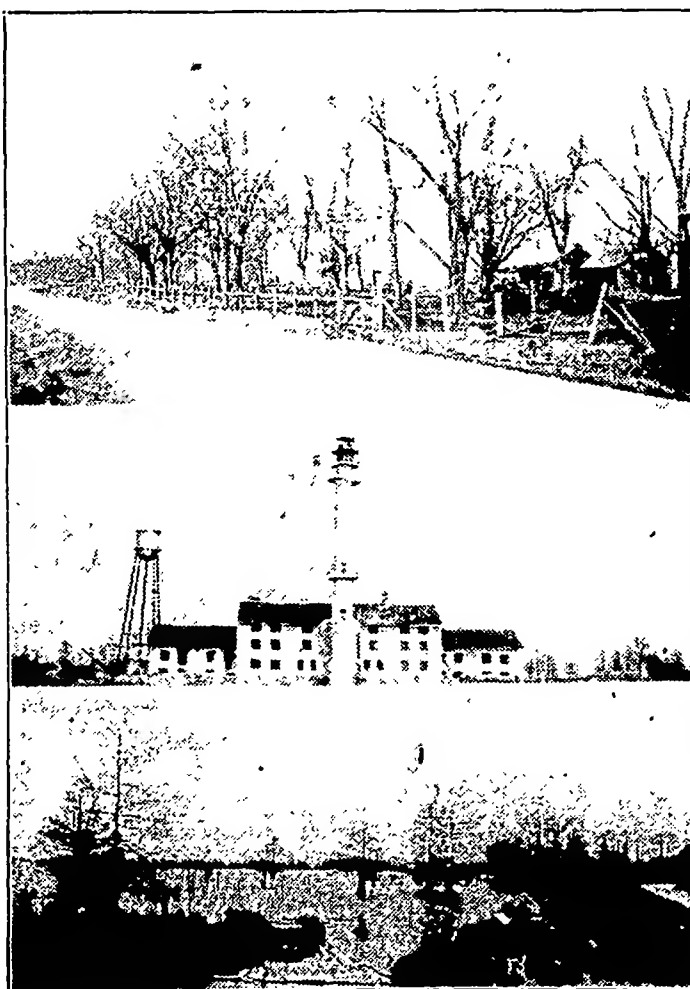
PERCOLATORS

WAFFLE IRONS

VACUUM CLEANERS

CURLERS

### Some of the Beauties of Lake Mattamuskeet



WINDING country roads skirt the borders of beautiful Lake Mattamuskeet and old farm houses set back from well kept lawns, sometimes covered by huge old pecan trees. The central picture shows the hotel now being conditioned, at Lake Mattamuskeet Federal Migratory bird refuge. The watch tower was formerly the smoke stack of the giant power house, which is now being converted into a hotel. In the days when the border of Lake Mattamuskeet was farmed the power house pumped it dry, sucking water from the lake bed at the rate of a million gallons a minute. The bottom picture shows a glimpse along the shore of Lake Mattamuskeet when the water is high.

100 Pd

"Flowers for Every Occasion"

**HAZEL PAYNE**  
Engelhard Representative for  
**MRS. B. W. SHELTON**  
**FLORIST**  
Washington, N. C.  
Flowers Wired Any Time Anywhere  
Engelhard, N. C.

100 Pd

**MAK-UP BOX**  
New Beauty Parlor at Engelhard, N. C.  
Located at the Junction of Stumpy Point-Engelhard Highway  
Popular Work at Popular Prices  
Only Beauty Shoppe in Hyde County  
Ann Weston Payne Proprietress

100 Pd

**R. D. McKinney**  
Engelhard, N. C.  
Guaranteed Work  
Shoe Dyeing and General Repairing  
MAIL ORDERS  
Given Special Attention

**Pamlico Ice & Light Co., Inc.**  
ENGELHARD, NORTH CAROLINA