

WIDE ACTIVITY IN TYRRELL'S HUGE SCHOOL SYSTEM

Library, Glee Club, Sports, and Parent-Teachers Association keep busy

By W. T. CRUTCHFIELD
Principal Columbia High School
In the past two years the library of Columbia High School has been entirely reorganized, and put on a working basis. In 1935-36 all the books were mended, classified, and shelved. Preparation of a card catalog was begun, and was finished early in this school year. An accession book was purchased and is providing a most valuable record.

New shelves and bulletin boards, both stationary and movable ones, were made and stained by the boys of the Agriculture Department.

A Library Club was organized last year whose members, acting as librarians-in-charge, each taking his or her turn behind the desk. Practice has made the club more efficient this year than last. This circulation is excellent, the students reading both old and new books.

In 1935-36 Richard's Encyclopedia was added to the library bringing the total number of encyclopedias to five. This year three unabridged dictionaries have been purchased. New magazines in the library include Harper's Monthly, the Scientific American and the World Digest. We also subscribe to three daily papers. Many new books were purchased this year.

Sports and Physical Education
The athletic program of the Columbia High School is not confined to inter-school competition but the teams now playing the high school have enjoyed considerably better than average success. The basketball team just completed a good season. They lost two games (both to Elizabeth City) and won the rest. The prospects are bright for a good baseball nine this season. Practice has already begun, and games will be played during April and May.

The most interesting and valuable part of the Physical Education program is the intra-class sports. Softball and tennis are the most popular of the intramural games. The Juniors and Seniors played a miniature world series last fall. There is a steady and wholesome growth of interest in sports and physical development among all the students of Columbia High School. It is believed that this type of Physical Education program will contribute to the betterment of the school and the citizenship of Tyrrell County.

Columbia Parent-Teachers Association

The Columbia P.T.A. has been a very active organization during the current school year. Under the leadership of Mrs. F. E. Coohon there has been created a better spirit of cooperation among teachers and parents than has been manifest for many years. Besides this excellent spirit, the P.T.A. has contributed materially to the betterment of the Columbia School. This year they have added over four hundred dollars worth of playground and stage equipment, a large number of books to the high school and elementary libraries, and have sponsored a most successful lunch room. Columbia has a real live P.T.A.

This year's officers are: Mrs. F. E. Coohon, president; W. T. Crutchfield, first vice president; Mrs. E. J. Brickhouse, second vice

A YOUNG MAN WHO MAKES HIS MARK



C. EARL COHOON of Columbia is a business man of the new day. Boyish, likeable and extremely friendly he radiates good will and hospitality. The visitor to Columbia is instantly impressed with his energy and sincerity and time will leave him the master of great responsibilities for the people of his section. Mr. Coohon is the wholesale distributor for the Texas Oil Company in Columbia. He is engaged in farming and other enterprises, and is now one of our summer residents of Dare County. He has built a cottage on the beach at Nag's Head during the past season. Mr. Coohon is Tyrrell County's vice-president of the Southern Albemarle Association.

president; Mrs. M. A. Davenport, secretary and Mrs. T. K. Yerby, treasurer.

Home Economics Department
The Home Economics Department of Columbia High School is adequately equipped for home making in general, with special emphasis upon sewing, cooking, and care and development, house planning and furnishing, personality development and art. In every day life. This year there are forty-two students taking Home Economics. These are divided into two sections, first year, and second year. The first year class devote the greater part of its time to the study of food, its value, selection of foods, and the preparation and serving of simple breakfast and luncheons. It is a devoted part of its time to the study of fabrics, personality developments and art. The second year class continues and enlarges upon the same studies and particularly emphasizes sewing, child care, preparation of dinners, house planning and furnishing and entertaining.

The Columbian
The Columbian is a monthly publication edited and printed by the students of Columbia High School. The regular staff includes the editor-in-chief, art and sports editors, business advertising, and circulation managers, assistant editors and reporters from each class and school organization. The school is well equipped for printing. The Columbian. It has a mimeograph and mimeoscope by which clear copies may be made easily. These machines enable the students to make use of color together, in promoting interest of patrons in the school.

The business men of the town have shown a deep interest in the paper and have cooperated splendidly with the advertising department at all times.

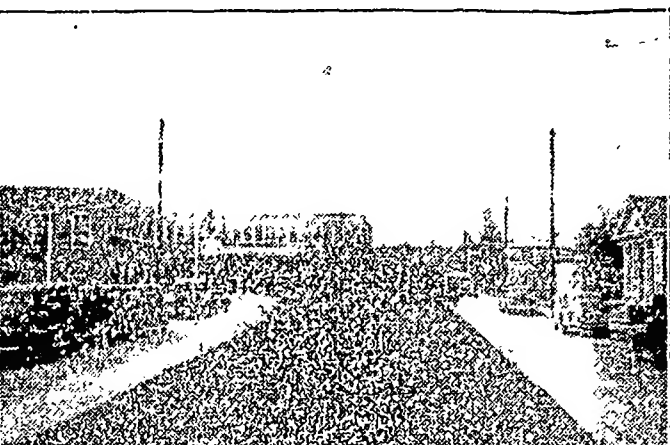
The student staff is capable and willing to work. They are interested in the work and they have accomplished a great deal in this manner. Each year they become ambitious. This year they expect to publish the first annual or year book ever published in this high school.

Glee Club
The Glee Club of Columbia High School has done excellent work this year under the able direction of Mrs. Garrett. The club is also fortunate in having Mrs. Ida Sprull as pianist and Miss Margaret Liverman as faculty adviser. The club, which is composed of about sixty boys and girls, has already given three chapel programs and one P.T.A. program. Since it is to take an active part in the commencement exercises, the club is now busy learning several selections for that.

HIS FIRST DAD
MISHAP IN 34 YEARS
Captain J. T. Twiford, the veteran keeper of Roanoke Marshes Light just off the south end of Roanoke Island, has been in the Lighthouse service 34 years but up until last Thursday he had never had an accident of any kind nor had he been out on account of sickness during this length of time. Leaving the lighthouse late last Thursday in his boat to go to the mainland he caught his leg between the motor and engine box and suffered a painful fracture of the bone. He was rushed to the Marine Hospital in Norfolk for medical treatment.

Title to Land Denied
In Mecklenburg, Germany, a decree of the year 1696 declared that peasants had no hereditary rights to their land, that their lords could take away their holdings, even though their ancestors had held the land from time immemorial.

Tyrrell County's Capital Appears As a Modern City



THE upper picture gives a glimpse of the beauty of the town of Columbia. Its streets are well paved and well kept. The buildings up to date. The central picture shows the home of Dr. S. C. Chaplin, which is adjacent to the Columbia Hospital owned by Dr. Chaplin. This structure is typical of the spirit in Tyrrell County today. The lower picture shows a newly completed addition to the F. E. Coohon, an attractive modern home in Columbia. A few years ago the town of Columbia had a few streets and sidewalks and put a sewer. It got a lot of work in a lot of money. Now a progressive town Board is undertaking many more improvements.

FOURTEEN YEARS OF PROGRESS

By J. Ernest Norris, Mayor of Columbia, N. C.

There has been a marked progress in the Town of Columbia for the past 12 or 14 years. Upon the arrival of the writer in Columbia in June, 1922, he found a town with brick sidewalks and no paved streets. Main street, in the residential section of the town, was so inadequately drained that water grass was growing in the gutters in some places. In fact, on account of the lack of drainage, and the condition of the streets there were places even in Main Street where you could hardly get over in wet weather without getting "stuck."

On the corner of Main and Broad streets, where the Standard Service Station now stands was a long two-story frame building with a porch running the entire length of it. This building had once been used as a hotel but was then used as a residence and offices. On the opposite corner where the Texaco Service Station now stands there was another long frame building and an old wooden store. Many of the other stores were in unimproved condition. We had electric lights only about twelve hours each day, which were furnished from a locally owned plant.

In 1923 an effort was made to improve the streets. A part of Main street. This helped a great deal. Then in 1926 the town issued bonds and borrowed the money and paved all of the Sepperson River to the eastern boundary of the town. The paving of these streets made a wonderful improvement in every respect. This was followed by the replacing of the above mentioned frame buildings with the Standard and Texaco service stations, both of which are built of brick. Some of the other frame buildings were replaced with brick buildings, all of which made a great improvement in the beauty of the town as well as the usefulness of the buildings.

Since that time there have been various other improvements that add to the attractiveness of the town and help to make it a more desirable place in which to live. For several years we have had twenty-four hour electric light and power service furnished by the Virginia Electric and Power Company. We have a much more adequate telephone service, and

hope to get a twenty-four hour telephone service, as it is during the week. Our merchantile houses are much more attractive than they were a few years ago and are able to give the public more efficient service in quality and variety in merchandise, which is very gratifying.

Through the help of the CWA, NCERA and WPA, we have been able to get a complete and efficient sewer system and have been able to put hard surface on several of our other streets without a great deal of expense on the part of the property owners of the town. Both the sewerage system and the surfacing of the other streets have greatly improved the drainage of the town and thereby improved the sanitary conditions.

We have modern hotels and a modern and well equipped hospital in our town and Dr. S. C. Chaplin, who owns and operates the hospital so as to be able to give more efficient service Mrs. Hester Fisher is enlarging and improving Fisher's Inn so as to accommodate more guests. The Town Officials are making an effort to get more streets hard surfaced and to make other improvements. We have a recently organized Lion's Club that is very much alive and is beginning to function, a very much alive Woman's and Junior Women's Clubs, both of which are doing a great civic work.

In other words The Town of Columbia has been transformed, within the last 14 years, from a sleepy, apparently unambitious village into a live, progressive, ambitious community with a full determination to take full advantage of its opportunities of becoming a more wonderful community than it is even now.

And we invite you to visit our town and enjoy that genuine hospitality for which our people are noted and to enjoy all of the many advantages for recreation, play and sports in the way of hunting, fishing etc. that we have to offer.

TYRRELL PEOPLE HAVE AN ACTIVE FARM PROGRAM

Various Methods Tried Out That Lead To Better Methods of Farming

By H. H. HARRIS
County Agent

Without the cooperation of the farmers agriculture could not progress, as it is through the demonstrations carried out by them that facts are established leading to better methods of farming. Tyrrell county farmers could not be surpassed in their cooperation with the county agent. When passing through this county you might enjoy talking with some of the farmers.

The farmers of Tyrrell county have cooperated in carrying out many demonstrations that have proven of great value towards increasing the farmer's income. Among the demonstrations carried out are swine feeding demonstrations—478 hogs were demonstrated fed in 1936 bringing a total profit above feed cost of \$1,571.07 or the 14 farmers conducted these demonstrations. In addition to this profit \$470.63 worth of fertilizer or plant food value was left on the farm, records kept on farm flocks—by cooperating or

flock management 7 farmers made a profit of \$1,169.80 above feed cost which was \$707.27. From eggs produced on their farms. Some interesting results of accomplishments of those keeping records are shown on the following figures: average return above feed cost per bird in 1935 was \$1.25 and in 1936 was \$1.55. In 1935 only 71,190 eggs were produced for a feed cost of \$677.58 while in 1936 105,451 eggs were produced for \$707.27. Thus 24,261 more eggs were produced in 1936 than in 1935 for only \$49.69 more feed cost. The valuable results obtained in flock management are recommended to other farmers in the county. Other lines in which demonstrations have been carried out are corn, oats, lespedeza, potatoes, cotton, lambs, fertilizer placement, spraying tree fruits, oil case and parasite control, swine sanitation, spraying vegetables, rat control, forestry, beekeeping, beef cattle, crop rotation. The results from these demonstrations will serve as a foundation for further work with first hand facts to work from much progress can be made.

A very active farm bureau in the county is carrying on good work in all fields. It is cooperating with State and National Farm Bureau projects and at the same time on local needs.

This being an agricultural county, agriculture should be developed and there is a better place to

start doing this than working with the county's farmers of tomorrow. An active 4-H Club in the county is conducting some interesting projects which will be a great aid to them in later years.

Without the cooperation of the farmers in Tyrrell this work could not have been accomplished, and through this splendid cooperation on the part of the farmers, better practices of farming are being established and more farms are being reached causing agriculture in the county to get nearer its share of the county income.

GOT TRAINED IN FRANCE TO HANDLE OIL BUSINESS

Clarence E. Ayers of Plymouth Is Successful Standard Oil Wholesaler

Clarence E. Ayers, one of the most popular and successful young business men in the Southern Albemarle County, Standard Oil wholesaler at Plymouth, got his training in the oil business while in Chaumont France with General Pershing. Mr. Ayer enlisted early during the war.

Mr. Ayers has about reached his two score, has a splendid wife, an attractive home and lovely children. He is most comfortably situated, is a business getter and a leading citizen.



When in Manteo make it a point to stop in and try one of our delicious sandwiches. They're a treat!

Chicken Salad, Ham, Bismonto Cheese, Combination, Deviled Egg.

Saboy Confectionary
S. E. Midgett, Prop.
2 Manteo, N. C.

Four Point Milk News

DRINK MORE "Grade A" MILK

Drink Milk For Pep, Beauty, Resistance, and Growth

Manteo, N. C., April 2 Pure wholesome milk rich in food value and nourishment is decreed a special spring tonic which encourages and increases pep, beauty, resistance and growth.

For more pep during these spring afternoons when spirits lag, we suggest a cool glass of good, old-fashioned HULCAM FARM DAIRY'S MILK... fresh from our sparkling dairy on Roanoke Island.

A quart a day of HULCAM FARM DAIRY MILK will increase your child's resistance, build sturdy bones and good teeth and prevent rickets.

Get acquainted with HULCAM FARM DAIRY MILK.

DRINK MORE "Grade A" MILK

Hulcam Farm Dairy

Z. V. Brinkley, Owner 960 Manteo, N. C.

New York Life Insurance Co.

A Mutual Company Founded in 1845

A Dime a Day GUARANTEES INCOME

at old age. Life insurance offers this great safeguard—and it provides safety for your savings, a good interest return on your investment, the development of saving and thrift, and a splendid lesson for your children. Do not delay but consult the agent of this strong company with more than two billion dollars in assets.

New York Life ANNUITY ENDOWMENT

Issued in units of \$10 a month, this policy would guarantee you a retirement income of, say \$50, \$100, or \$200 a month, etc., for life. In event of death before retirement age, your family would receive at least \$1,000 of insurance for each \$10 a month unit.

E. E. MEEKINS SPECIAL AGENT Phone 42 MANTEO



WHEN IN MANTEO Visit Roanoke Island's Most Modern Soda Fountain

Ice Cream Tobaccos Soft Drinks Sandwiches FEARING'S Thomas Fearing, Mgr. Manteo, N. C.