

Gift Suggestions

- Comfortable Chairs. And Chairs for that Cosy Corner.
- A comfortable Sofa for the living room.
- A complete Bedroom Suite.
- Dressing Tables in many styles.
- Attractive Rugs and Art Squares.
- A handsome Library Table.
- A dainty Writing Desk.

FURNITURE

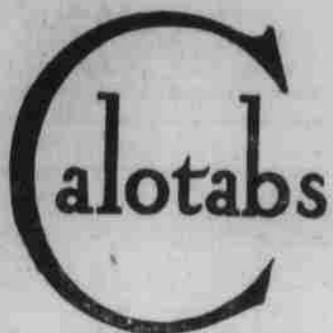
A Gift That Will Last

If you are in doubt as to what to give, visit Quinn's and select from our stock of hundreds of practical and useful gifts. Furniture as a gift is permanent, lasting, will not be tucked away in a few days, nor will it be smoked up or eaten. Come in and look around.



QUINN FURNITURE CO.

To abort a cold and prevent complications take



The purified and refined calomel tablets that are nausealess, safe and sure.

Vest pocket size, 10c; large family package, 35c. Beware of imitations.

666

Quickly relieves Constipation, Biliousness, Loss of Appetite and headaches due to torpid Liver.

SCHEDULE

Norfolk Carolina Line Inc.

Operating between Elizabeth City and Norfolk, stopping at Cowell's Wharf, Old Trap, Newbern's Landing, Jarvisburg, Barnett's Creek, Coinjock, and Long Point.

Leaves Elizabeth City Tuesdays, Thursdays and Saturdays at 2:30 p. m., arriving at Norfolk at 6 a. m. the following day.

Leaves Norfolk Mondays, Wednesdays, and Fridays at 4 p. m., arriving at Elizabeth City at 8:30 a. m. the following day.

Big steel hull, electrically lighted steamer, the Annie L. Vansolver, better equipped for passenger traffic than ever by the addition of new staterooms.

For further information address J. B. Pinner, agt., J. J. Harrison, agt. Ayldett Bldg. Clyde Line Oppo. Iron Wks. Dock No. 3. N. Water St. E. Water St. Phone 740 Norfolk No. 25418 Eliz. City, N. C. Norfolk, Va.

STOP RHEUMATISM WITH RED PEPPER

When you are suffering with rheumatism so you can hardly get around just try Red Pepper Rub and you will have the quickest relief known.

Nothing has such concentrated, penetrating heat as red peppers. Instant relief. Just as soon as you apply Red Pepper Rub, you feel the tingling heat. In three minutes it warms the sore spot through and through. Frees the blood circulation, breaks up the congestion—and the old rheumatism torture is gone.

Rowles Red Pepper Rub, made from red peppers, costs little at any drug store. Get a jar at once. Use it for lumbago, neuritis, backache, stiff neck, sore muscles, colds in chest. Almost instant relief awaits you. Be sure to get the genuine, with the name Rowles on each package.

E. E. CLARK
Typewriters, Adding Machines and Cash Registers Repaired and Rebuilt
Polandster Street

Collector Grissom Issues Statement

Answers Flood Of Questions Regarding Enactment Of New Revenue Legislation

For the first time, too, the Government guarantees a uniform income, irrespective of the date of purchase or of the market value. Thus if any certificate is redeemed before the five

The following statement is issued by Collector of Internal Revenue Gilliam Grissom:

Enactment of new revenue legislation has brought a flood of inquiries to the offices of collectors of internal revenue. The Revenue Act of 1921 became effective November 23, 1921, unless otherwise provided for.

To avoid error in the preparation of their returns and later difficulties with the bureau of internal revenue, taxpayers are advised to carefully note the changes and when they become effective.

The excess profits tax is repealed as of January 1, 1922. The rates for 1921 are unchanged.

The surtax rates for the calendar year 1921 are unchanged, and range from one per cent on the amount of net income between \$5,000 and \$6,000 to 65 per cent on the amount of net income in excess of \$1,000,000.

For the calendar year 1922 the surtax ranges from one per cent on the amount of net income between \$6,000 and \$10,000 to 50 per cent on the amount by which the net income exceeds \$200,000.

The exemption allowed for a dependent is increased from \$200 to \$400. Married persons living with husband or wife and heads of families are allowed a personal exemption of \$2,500 (instead of \$2,000) unless the net income is in excess of \$5,000. In which case the personal exemption is only \$2,000. The act provides that in no case shall the reduction of the personal exemption from \$2,500 to \$2,000 operate to increase the tax which would be payable if the exemption were \$2,500 by more than the amount of the net income in excess of \$5,000. This is to overcome the disparity in the case of two taxpayers, one of whom is just within the lower \$2,000 exemption and the other just within the higher \$2,500 exemption.

Single persons and persons not living with husband or wife, are allowed a single personal exemption of \$1,000. Persons having gross incomes of \$5,000 or over are required to make a return, regardless of the amount of net income.

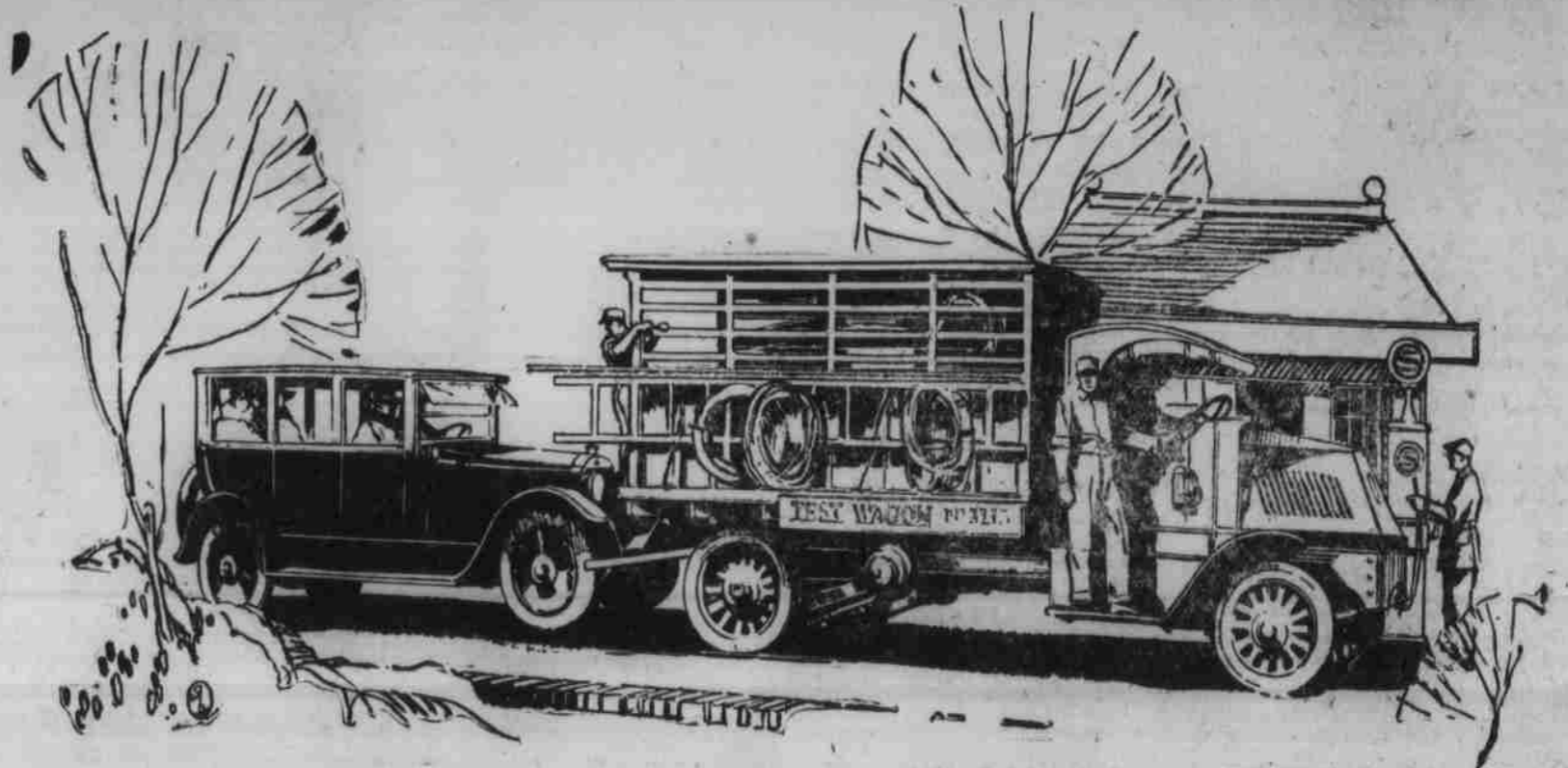
Provision is made for the repeal as of January 1, 1922, of the tax on stockholders of a personal service corporation as such. After that date such corporations are to be taxed in the same manner as any other corporations.

The income tax on corporations for the calendar year 1922 and thereafter is increased from 10 to 12 1/2 per cent. The \$2,000 exemption heretofore allowed corporations is to be granted only to those corporations whose net income is \$25,000 or less.

Many persons are under the impression that taxes on ice cream, soft drinks, etc., monthly returns of which are required, have been repealed with the enactment of the new act. These taxes remain in force until the end of the calendar year 1921.

No change is made on the tax on admissions, except that after January 1, 1922, there will be no tax where admission is ten cents or less. Effective January 1, 1922, the following taxes are also abolished: on musical

Meets Every Monday Night
Worla Bagley Council, No. 60, Jr. O. U. A. M., meets every Monday night at 7:30 o'clock in their hall, third floor of the Kramer Bldg. Visitors welcome.



Why do they Stop at this Pump?

BECAUSE it is dispensing the improved "Standard" Motor Gasoline. Both demand gasoline which will fire when the spark goes on. They want power for speed and hard hills. They want clean burning fuel that won't foul the motor and the lubricating oil with carbon. They want gasoline that meets all these specifications and at the same time gives big mileage per gallon—even in cold weather.

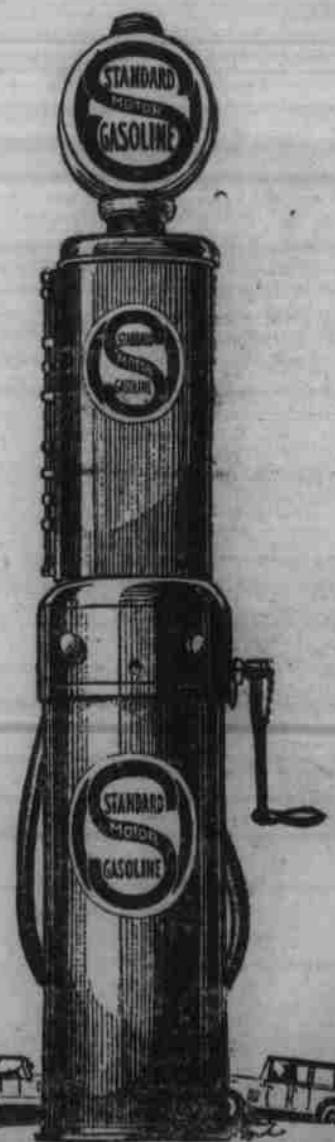
So they naturally stop where they get *balanced* gasoline—"Standard" Motor Gasoline. By "balanced" we mean gasoline that tests higher on *all* important gasoline properties; that insures maximum motor efficiency with fuel economy.

"Standard" Motor Gasoline leads the procession in volatility, rate and completeness of combustion, pressure developed and work done, as measured by the speed, power and mileage of any type of automobile.

Put your motor on a diet of balanced "Standard" Motor Gasoline and you will have less trouble and expense. Your motor will start more quickly. Your car will climb hills more easily. You will get further on a gallon.

Lubricate with Polarine, the enemy of friction. It is not only the best oil, but the cheapest per mile of service.

STANDARD OIL COMPANY (NEW JERSEY)



instruments, sporting goods, chewing gum, portable electric fans, thermos bottles, fur articles, pleasure boats and pleasure canoes, unless sold for more than \$100, toilet articles, medicines and numerous articles of apparel.

On and after January 1, 1922, the tax on various works of art is reduced from 10 to 5 per cent, the tax on candy from 5 per cent to 3 per cent, and the tax on carpets, rugs, trunks, valises, purses, fans, etc., from 10 per cent of sales price in excess of specified amounts to 5 per cent of sales price in excess of specified amounts.

The taxpayer in writing that an additional inspection is necessary.

The period for filing returns on the calendar year basis is from January 1 to March 15, 1922. This year, as last, the tax may be paid in full at the time of filing the return or in four equal installments, due on or before March 15, June 15, September 15 and December 15.

The tax on parcel post packages is eliminated effective January 1, 1922. The new act provides that no taxpayer shall be subjected to unnecessary examinations or investigations, and only one inspection of his books or accounts shall be made for each taxable year, unless the taxpayer requests otherwise, or the commissioner no-

had by application to the collector's office."

"Copies of the revenue act may be

Our Groceries Are ALWAYS GOOD
Our Prices Are ALWAYS LOW
G. W. TWIDDY, Grocer