

Hood's Sarsaparilla

Cures all humors, catarrh and rheumatism, relieves that tired feeling, restores the appetite, cures paleness, nervousness, builds up the whole system. Get it today in usual liquid form or chocolate tablets called Sarsatabs.

ITCH CURED

IN 30 MINUTES, By One Application of Dr. David's Sanative Wash
We guarantee DR. DAVID'S SANATIVE WASH to cure any case of Itch in 30 minutes, if used according to directions, or we will refund your money. If your Dog has Scratches or Mange Dr. David's Sanative Wash will cure him at once. Price, 50 Cents a Bottle. It cannot be mailed. Delivered at your nearest express office free, upon receipt of 75 cents.
OWENS & MINOR DRUG CO.
Richmond, Virginia

FREE, trial treatment for DROPSY.

Quick Relief. Write at once for literature and treatment directions to **HYDROLYTIC MEDICINE CO.** Rural Retreat, Virginia. REFERENCE—AUGSBURG BANK, Rural Retreat, Va. **OPINION NOT ALWAYS FINAL**

Pretty Safe to Say That Doctor's Diagnosis Was "Away Off" in This Case.

The pretty daughter of a physician is engaged to a college student of whom her father does not altogether approve. His daughter is too young to think of marriage, the doctor asserts; the college student is too young to think of it, likewise. It is out of the question.

She explained all this to her lover the other night.

"Father says," she summed it up; "father says, dear, that I will have to give you up."

The young man sighed. "Then it's all over?" he murmured, with gloomy interrogation. And the girl laughed and blushed.

"Well," she said, "well, you—know that when the doctor gives you up that's just the time for you to take more hope. Isn't it sometimes that way?"—Reboth Sunday Herald.

Careless and Cappy.

We have undertaken to blend in one the best of the two proverbial conditions—to be careless and happy, hairless and cappy. We are now happy and cappy, and frequently careless as well. A pretty figure may be conjured up—a figure in leaf-green satin veiled with rose and silver shot gauze. The dark hair is covered by a sailor's cap, point and all, worn flatly over the whole head, the point falling at the back. Instead of being made of scarlet cashmere, it is of the gauze, over silver tissue, and studded with pink and yellow topaz, while it is bordered with great gray pear-shaped pearls, these, of course, hanging around the back of the neck and over the soft hair in front.

We have taken to caps!

The Lord's Advertisement.

Willie had been to see his old nurse, and she had shown him her treasures, including some very strikingly colored scripture texts which graced her walls.

A few days afterward his aunt gave him a dime to spend at a bazaar. Seeing that he seemed unable to find what he wanted, she asked him what he was looking for.

"I am looking for one of the Lord's advertisements, like Mary has in her room," said Willie.

Easy Game.

"What you need," said the kindly friend, "is a change of air. You should leave the city a bit—forget cares and worries. Travel! Breathe the pure ozone of the prairie. Go out to Montana and see the mountain goats!"

The little one bristled.

"Montana!" he snorted. "Why, I know a mountain goat in Newark!"—New York Times.

Love making is one kind of cold weather picnic.

If You Knew How Good Post Toasties

are the sweet, crisp bits of Post Toasties you would, at least, try 'em.

The food is made of perfectly ripe white corn, cooked, sweetened, rolled and toasted. It is served direct from the package with cream or milk, and sugar if desired—A breakfast favorite!

"The Memory Lingers"
POSTUM CEREAL CO., Ltd., Battle Creek, Mich.

Winter Months on the Farm

How to Improve Them

Profitable Pork Production

Breed, Breeding and Feeding the Foundation of Success. Management of the Sow and Young Pigs By PROF. G. C. HUMPHREY Wisconsin College of Agriculture

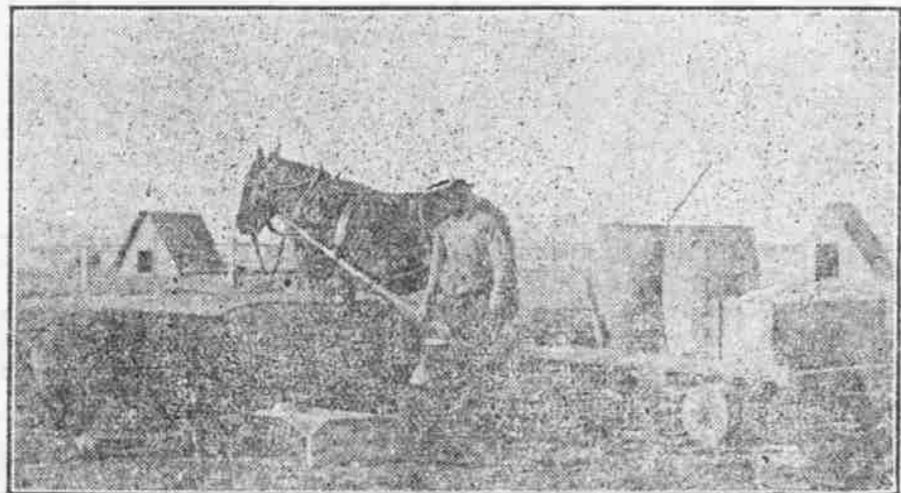
Copyright, 1910, by Western Newspaper Union

At the present time there is considerable controversy as to the merits of the lard type and the bacon type of swine. The long, narrow, thin-fleshed bacon type, which dresses 70 to 75 per cent. on butchering, as compared with the lard type, which dresses 84 to 87 per cent., meets with little favor in some sections. In fact immature and unfinished lard hogs satisfy most of the bacon demands. On the other hand, the lard type, which is low, deep, broad, heavily-fleshed, and including the Poland China, Duroc Jersey, Berkshire and Chester White breeds, is always in demand.

Selection of Breed. The selection of a breed is due rather to personal preference than to any superiority of one of the four varieties of lard hogs. Efficient management will succeed in the long run, no matter what breed is selected as the foundation stock. The market itself does not differentiate between breeds but rather requires uniformity in type combined with superior finish and quality. The best plan for each farmer to follow is to select the breed that most closely corresponds to his particular conditions as determined by personal preference, method of production, local popularity of the breed and the market demands.

Due to the fact of the rapid responses to the introduction of superior blood and the ready retention and transmission of acquired characteristics among the swine family, the upgrading and improvement of the scrub herd is a relatively simple matter. There is no excuse for any farmer maintaining a herd of inferior scrub hogs on his farm. By the use of a good, pure-bred sire anyone can, in a few years and at little expense, establish a grade herd equal to a pure-bred herd as regards pork production. Of course, this necessitates the rejection of all inferior animals from the breeding herd and the maintenance of only the improved types.

Importance of the Boar. The herd boar should be a pure-bred, prepotent sire strongly evincing his breed characteristics and possessing the necessary market confirmation. He should be short and broad



Fattening Swine Can Be Kept Most Economically in Lots With Individual Houses for Each Dozen Hogs. A Feed Wagon is a Labor-Saver.

in face, broad between the eyes and possess short, broad ears. His neck should rise rapidly between the ears and widen into a body which is long, uniformly wide and deep.

Massive forequarters and narrow hindquarters with insufficient depth in hams and twist should be avoided. Refinement in the head is essential, supplemented by a broad, strong, slightly arched back, a wide loin and wide deep hams. The legs and feet of the boar should be short, strong and sound.

Having selected a boar corresponding to the above type, it is best to quarantine him for three or four weeks to eliminate all danger of the introduction into the herd of parasites and diseases by way of the newly-purchased sire. A boar should not be used for service earlier than the age of eight months and then should be only allowed to serve one female a day, preferably in the early morning, before feeding.

The sow should correspond closely to breed requirements, although she can be a little more refined in features and bone. She should possess ten to twelve sound teats, also a quiet, docile temperament indicative of a good mother. Both the boar and sow should be in good condition for the breeding season and should be grown rather than fattened. During pregnancy the sows should be forced to exercise by scattering their feed in different places or by making them root for their feed mixed with litter.

Rations for Breeding Swine. Some of the best swine rations used at Wisconsin college of agriculture are about perfect. The only objection to them is that they are too expensive for long-continued feeding operations. A good ration consists of 100 pounds of mixed feed fed as slop, composed as follows: Cornmeal 30 pounds, ground oats 30, wheat middlings 20, oil meal 8, salt 2.

This ration is particularly adapted for swine from the weaning period until they reach 200 pounds in weight. All the corn that the pigs will clean up can also be supplied where they

are being fattened for market, without danger of causing digestive disorders. The oil meal in this ration not only gives consistency and uniformity to the slop, but it also regulates the digestive organs and improves the quality of skin and hair.

A good brood sow ration consists of cornmeal 23 pounds, ground oats 23, wheat middlings 23, wheat bran 23, oil meal 6 and salt 2. This is an excellent ration, the wheat bran giving it bulk and increasing its laxative effects.

A good ration for small pigs includes ground oats (free from hulls) 35 pounds, wheat middlings 35, cornmeal 20, oil meal 8 and salt 2. This should be supplemented with warm skim-milk for young pigs, fed just before and after weaning time. A good



A Good Type of Brood Sow for Producing Market Pigs.

plan is to feed small quantities of this ration to four-week-old pigs for two weeks and then wean them and gradually accustom them to the growing ration.

In the case of the first two rations oats may be omitted and the same amounts of corn and wheat middlings increased or barley may replace the corn, as it is excellent for bacon production. Corn and clover pasture produce excellent gains towards the end of the fattening process. In the brood sow ration bran may be replaced by roots and oats may be omitted, providing the sows have abundant exercise. After the farrowing period sows need the growing ration for the maintenance of large litters.

Care at Farrowing and Weaning. The sows should be housed in com-

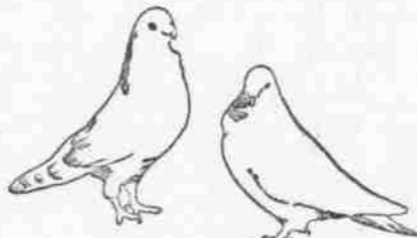
DOULTRY

MAKING MONEY WITH SQUABS

Largest Pigeon Farm in World Turns Out 250,000 Birds Every Year—Much Work Required.

Travelers approaching Los Angeles from the north are astonished sometimes at seeing from the car windows flocks of pigeons numbering many thousands just on the outskirts of the Angel City. These belong to the world's largest pigeon farm, owned by T. R. Johnson, and justly considered one of the show places of southern California. Merely as a curiosity it ranks with the alligator farm, the numerous ostrich farms and similar freak establishments.

The pigeon farm consists of about eight acres of sandy, gravelly land along the bed of the Los Angeles river—a "river" only by courtesy during the long, dry summer months,



Money Makers.

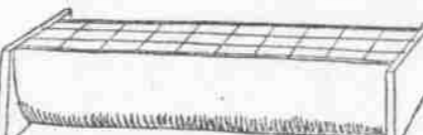
when it becomes practically a mere rivulet. The farm was established about ten years ago on a comparatively small scale; but the venture proved so profitable that the owner developed the business along lines such as have marked the growth of other great modern industries, until he claims to now have more than 100,000 fully grown pigeons in his establishment, not to mention tens of thousands of squabs. Any one questioning the accuracy of the figures has the privilege of counting. As a matter of fact, the estimate probably is many thousands below the actual number.

The object of this vast pigeon breeding establishment is the production of squabs. At the present time about 40 dozen squabs are killed and sent to market every day; but a little later in the season the daily output will be much greater, so that the annual squab crop from this one establishment is about 250,000. These sell at anywhere from \$2.50 up to \$4 per dozen (depending upon the time of year), and it is evident that the income from the mammoth pigeon farm foots up to a very tidy sum annually. However, this is not all "velvet" by any means. The birds consume between two and three tons of grain every day and the labor of looking after them, keeping the buildings clean and sanitary, and killing and preparing the squabs for market is not a trifling matter.

WATER TROUGH IS SCREENED

Easily Arranged Out of Piece of Eaves Troughing and Chickens Cannot Get Into It.

An excellent watering trough for chickens may be made by following the directions given below: Take a piece of eaves troughing



Screened Chick Waterer.

about 15 inches long and have a tin-ner solder on some end pieces. Then put a wire screen with a one-inch mesh over the top. The chickens cannot get into the water and one filling will do for all day.

DOULTRY NOTES

Food flavors the egg. Dry houses prevent roup. Too much raw meat produces worms.

The first essential in the production of eggs is the health of the hens.

Poor drainage in the chicken yard always results in unhealthy birds.

Feeding cannot be properly regulated when a mixed flock of large and small fowls are kept.

The orchard is a splendid place for poultry to range in. Poultry is a very good insect destroyer.

It would be a good thing to move the poultry yards occasionally giving the hens new, clean grounds to live on.

With young chicks there is as much danger of overfeeding as underfeeding. Feed often and regularly, instead of too much at one time.

The south slope of a hill makes a splendid location for a poultry house. The north and west sides are naturally protected from the cold winds.

A READER CURES HIS CONSTIPATION—TRY IT FREE

Simple way for any family to retain the good health of all its members.

The editors of "Health Hints" and "Questions and Answers" have one question that is put to them more often than any other, and which, strangely enough, they find the most difficult to answer. That is "How can I cure my constipation?" Dr. Caldwell, an eminent specialist in diseases of the stomach, liver and bowels has looked the whole field over, has practiced the specialty for forty years and is convinced that the ingredients contained in what is called Dr. Caldwell's Syrup Pepsin has the best claim to attention from constipated people.

Its success in the cure of stubborn constipation has done much to displace the use of salts, waters, strong cathartics and such things. Syrup Pepsin, by training the stomach and bowel muscles to again do their work naturally, and with its tonic ingredients strengthening the nerves, brings about a lasting cure. Among its strongest supporters are Mr. John Graveline, of 88 Milwaukee Ave., Detroit, Mich., Mr. J. A. Vernon of Oklahoma City and thousands of others. It can be obtained of any druggist at fifty cents and one dollar a bottle, or if you want to try it first a free sample bottle can be obtained by writing the doctor.



Raising the Temperature.

Frank had been sent to the hardware store for a thermometer.

"Did mother say what size?" asked the clerk.

"Oh," answered Frank, "give me the biggest one you've got. It's to warm my bedroom with."—Success Magazine.

Important to Mothers. Examine carefully every bottle of CASTORIA, a safe and sure remedy for infants and children, and see that it bears the Signature of *Dr. J. C. Watson*. In Use For Over 30 Years. The Kind You Have Always Bought.

Careful Man. "Pretty careful, is he?"

"Pretty careful. He left a partly smoked cigar in my office the other day, and a little later sent his clerk around after it."

No Backache or Kidney Pains. If you have pains in the back, urinary, bladder or kidney trouble, dizziness and lack of energy, try Mother Gray's Aromatic Catnip. The pleasant herb remedy. Relieves headache, nervousness, dizziness and loss of sleep. As a system regulator, it has no equal. At druggists or by mail. Ask for Sample FILED. Address: The Mother Gray Co., LeRoy, N. Y.

On the Stage. "We've got to get somebody to play this light part."

"Why not the electrician?"—Baltimore American.

TO DRIVE OUT MALARIA AND BUILD UP THE SYSTEM. Take the old Standard GLOVE'S TANKLESS CHILL TONIC. You know what you are taking. The formula is plainly printed on every bottle, showing it is simply Quinine and Iron in a tasteless form. The Quinine drives out the malarial and the Iron builds up the system. Sold by all dealers for 25 cents. Price 50 cents.

Disapproving Constituent. "How is your number of congress spending the holidays?"

"Doin' nothin' at home instead of in Washington."

For HEADACHE—HICKS' CAPSICINE. Whether from Colds, Croup, Crouping, Nervous Troubles, Capsicine will relieve you. It's liquid—pleasant to take—acts immediately. Try it. 10c, 25c, and 50c at drug stores.

It's easier to borrow from a new friend than it is to pay back what you owe an old one.

PILES CURED IN 6 TO 14 DAYS. Four drops will return money if PAZO OINTMENT fails to cure any case of Piles, Blind Bleeding or Straining. Price 25c to 50c.

A dead heart enjoys being a lively conscience—on others' affairs.

Itch Cured in 30 Minutes by Woolford's Sanitary Lotion. Never fails. At druggists.

Some men borrow trouble and some buy it by the bottle.

We Give Away Free of Cost

The People's Common Sense Medical Adviser, in Plain English, or Medicine Simplified, by R. V. Pierce, M. D., Chief Consulting Physician to the Invalids' Hotel and Surgical Institute at Buffalo, a book of 1008 large pages and over 700 illustrations, in French cloth binding, to any one sending 31 one-cent stamps to cover cost of wrapping and mailing only. Over 600,000 copies of this complete Family Doctor Book were sold in cloth binding at regular price of \$1.50. Afterwards about two and a half million copies were given away as above. A new, up-to-date revised edition is now ready for mailing. Better send NOW, before all are gone. Address: **WORLD'S DISPENSARY MEDICAL ASSOCIATION, Dr. R. V. Pierce, President, Buffalo, N. Y.**

DR. PIERCE'S FAVORITE PRESCRIPTION

THE ONE REMEDY for women's peculiar ailments good enough that its makers are not afraid to print on its outside wrapper its every ingredient. No Secrets—No Deception.

THE ONE REMEDY for women which contains no alcohol and no habit-forming drugs. Made from native medicinal forest roots of well established curative value.

W. L. DOUGLAS

ESTAB 1876 \$3, \$3.50 & \$4 SHOES FOR MEN FACTORIES AT BROOKTON, MASS., and see how carefully W. L. Douglas shoes are made, you would then understand why dollar for dollar they are guaranteed to hold their shape, look and fit better and wear longer than any other \$3.00, \$3.50 or \$4.00 shoes you can buy. Quality counts—It has made W. L. Douglas shoes a household word everywhere.

W. L. Douglas name and the retail price are stamped on the bottom, which is a safeguard against substitutes, the true values of which are unknown. Refuse all those substitutes. You are entitled to the best. Insist upon having the genuine W. L. Douglas shoes.

If your dealer cannot supply you with W. L. Douglas shoes, write for Mail Order Catalog. W. L. Douglas, 345 Spark St., Brockton, Mass.



W. L. DOUGLAS SHOES

CABBAGE PLANTS EARLY HEADERS

Our High Grade Frost Proof Cabbage Plants are now ready for distribution. It is impossible to get any better or more reliable plants than ours as we are teaching but the best seeds from old growers of undoubted reputation. Try ours and be convinced. Don't look for cheap seeds to sprout from, but for those that will grow crops, but seek quality if you would succeed. Price 25c per plant, 100 for \$25.00, 1000 for \$250.00, 10000 for \$2500.00. Write for our price list and catalogue. Full instructions and delivery guaranteed. Cheap express rates to all parts of the world.

EARLY JERSEY WAKEFIELD
CHARLESTON WAKEFIELD

S. M. Gilman Co., Box 5, Mequett, S. C.