

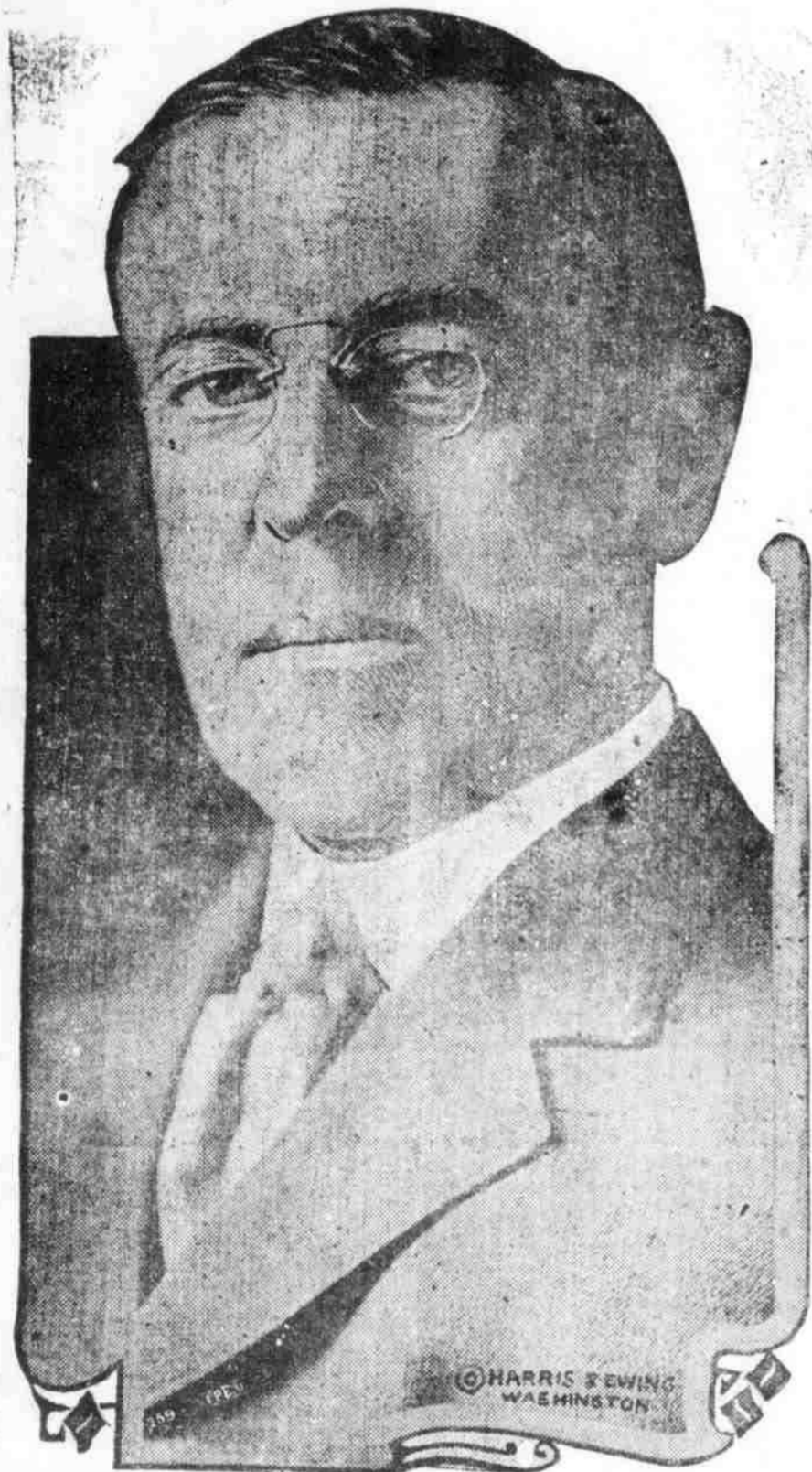
THE ROANOKE BEACON

C. V. W. AUSBON Editors and Publishers C. S. AUSBON

PUBLISHED EVERY FRIDAY.

Plymouth, N. C., Friday, November 10, 1916.

Latest News Reports Give Wilson 269 Electoral Votes—266 Necessary to Elect.



The election of 1916 has passed into history, and while a full vote was cast in Washington County it was done in a most quiet and orderly manner.

The result of Tuesday's election, as far as the County is concerned carries with it the convincing proof that our improved schools are bearing rich fruit; that the young men and many of the older ones, are exercising their own brains; that they have gotten upon a higher plane and by their suffrage will support men who are true to their principles, and will rebuke those who, for personal gain or through malicious spite or envy would aspire to office and power.

THE POLICIES FOR WHICH THE PRESENT SCHOOL BOARD OF WASHINGTON CO., HAS STOOD:

Special to Roanoke Beacon.

Less than a decade ago the spirit for public education was at a low ebb in Washington County. Our finances were meager, we had no equipment and there was but little co-operation here.

The school authorities of the county several years ago perceived the possibilities of a more

adequate school system that would command the respect and secure the full co-operation of our citizenship. Having caught this vision, the County Board of Education set to work deliberately and earnestly to bring about a better state of affairs.

1. The consolidation of small districts.
2. The building and equipping of new school houses to take the place of the old dilapidated buildings.
3. The voting of a special local tax for school purposes in as many districts as possible.
4. The establishment of as many high schools as possible.
5. The building up of a competent teaching force.

The matter of how earnestly the board has clung to these principles and plans and how successfully they have been carried out is of common knowledge to every citizen in the entire county.

The smaller districts have long since given way to the large and better organized districts. Practically every school house in the county is of a new and up to date type and furnished with modern equipment. About 85 per cent of the children of the county are now attending school that is supported by a special local taxation. Almost every child in the county is within an hour's walk of a good and well disciplined high school. As many children as desire can be instructed in high school subjects. Our teaching force commands not only the respect but

the admiration of our entire citizenship.

JOHN W. DARDEN,
Superintendent Schools
Washington County.

REXALL STRAW VOTE PROVES CORRECT.

Thomas L. Smith Names Wilson Before Election.

RETURNS COVERED ALL STATES—LOCAL VOTE A BIG FACTOR.

President Wilson's victory at the polls Tuesday is a striking verification of the prediction made by this newspaper long before election.

Three weeks ago, the 8000 members of the Rexall Druggists Association of which Thos. L. Smith is a member began to take a Straw Vote of their customers. The members of the Association being scattered all over the United States were able to reach 951, 396 voters drawn from all walks of life. It was the biggest straw vote ever taken and was made possible only by the national character of the organization.

Realizing the fact the Roanoke Beacon made special arrangements with Thos. L. Smith a member of the Rexall Druggists' Association in Plymouth to publish the returns from the Straw Vote.

The druggists throughout the country mailed or telegraphed the results of the votes cast by their customers to the national headquarters of their organization in Boston. There the votes were tabulated and the results of the balloting from all the states were announced by daily bulletins mailed from Boston and which were posted in the 8000 Rexall Stores, and published simultaneously in the leading newspapers of the country.

The first Straw Vote bulletin, sent out October 26th, showed Wilson in the lead. The second bulletin, issued October 27th, showed Hughes in the lead by

Condensed Statement of Condition of

The WASHINGTON COUNTY BANK PLYMOUTH, N. C.

At the Close of Business November 8, 1916.

RESOURCES:		LIABILITIES:	
Loans & Discounts	\$86,427.19	Capital Stock	\$10,000.00
Furniture & Fixtures	1,919.50	Undivided Profits	1,241.66
Cash & due from Banks	30,895.53	Bills Payable	29,472.90
		DEPOSITS	78,527.66
Total	\$119,242.22	Total	\$119,242.22

COMPARATIVE DEPOSITS (NOVEMBER 8, 1915: \$45,123.26
(NOVEMBER 8, 1916: \$78,527.66

Let us put your name on the books of a growing Bank, and be numbered among our over 600 satisfied customers. NO ACCOUNT TOO SMALL AND NONE TOO LARGE.

We pay 4 per cent. Interest on Savings, Compounded Quarterly.

"When You Want Money, We Have it; When You Have Money, We Want it."

Do Not Forget Us When You Sell Your Crop.

Business is Good!

Our coat Suits dept. has been kept busy.

Suits coming in on every Express. Remember we quote prices with any Mail Order House in the country. You will find our stock OF SUITS just the article you are thinking of purchasing.

Materials, Broadcloth, French Serges,
Gabardines and Poplins.

Shoes - Shoes

Just received by express 15 cases of Ladies' Shoes. Bronze, Black and White Boots, Dove Kid Boots, from \$3.50 to \$5.00!

ABE ADLER

one electoral vote. From that date each and every bulletin recorded steady gains for Wilson, both in the popular and the electoral vote.

The final Straw Vote dated November 6th, gave Wilson 554, 500 popular votes against 396, 896 for Hughes. On electoral vote Wilson received 299 and Hughes 232 on the 266 necessary to elect.

This nation-wide Straw Vote derived its value from its strictly non-partisan character. The Rexall Druggist, without regard to personal preferences, furnish-

ed to the national headquarters of their association. The United Drug Company, accurate figures for each day's balloting in their Stores. At the headquarters in Boston the ballots were tabulated without fear or favor, the sole object being to call the turn in politics before election. 1 t

GET THE HABBIT OF USING the Family Favorite Coffee, 25c, 30c, and 40c. Save from 10c to 15c on the pound. No fancy labels or tin can, but in a plain bag from Roaster to your door by J. W. Beasley Agent. The Family Store. Coffee Teas and Groceries. 10-20 3t.

Pugh & Midgett
Attorneys at Law
Plymouth, N. C.

Chas. T. Roebuck
Physician & Surgeon
Washington Street Plymouth, N. C.
Phone

ZEB VANCE NORMAN
Attorney & Counsellor at Law
PLYMOUTH, N. C.

Subscribe to the BEACON.