

Now on Display in our Showroom!

Today you can see the most sensational automobile ever introduced—The Outstanding Chevrolet of Chevrolet History, a Six in the price range of the four!

This amazing new automobile is now on display in our showrooms and we cordially invite you to come in for a personal inspection!

Judging by the tremendous interest which it has excited wherever shown—

—judging by the unqualified approval it has won from everybody, everywhere—

—the Outstanding Chevrolet will instantly impress you as the greatest dollar-for-dollar value ever offered in any automobile!

New 6-Cylinder Valve-in-Head Engine

When you lift the hood and see the new six-cylinder valve-in-head engine you will realize that a new era has dawned for the buyers of low-priced automobiles. Representing four years' development and testing by Chevrolet and General Motors engineers, embodying the discoveries of General Motors Research Staff, this new power plant is a marvel of advanced design. At every speed it operates with that delightful smoothness which everyone demands today in a modern automobile. It develops approximately 32% more power than any previous Chevrolet engine. It displays sensationally greater speed and faster acceleration. And yet, despite this brilliantly improved performance, it maintains Chevrolet's worldwide reputation for economical transportation by delivering better than an average of twenty miles to the gallon of gasoline!

Great Array of New Features

Matching this spectacular advance in performance is the greatest array of new features Chevrolet has ever announced—and the most outstanding appearance ever achieved in any car of comparable price!

The new four-wheel brakes not only assure positive safety, but are exceedingly quiet in operation. The new heavier, finer quality transmission and rear axle gears contribute to longer life and greater stamina. The new two-beam headlamps with foot control dimming device were never before available in Chevrolet's price class. The new AC gasoline pump with filter assures constant fuel supply no matter how steep the hill. And so on throughout the entire chassis, you will find feature after feature previously demanded in the finest of automobiles and now offered on the Outstanding Chevrolet in keeping with Chevrolet's policy of constant progress!

Distinctive New Beauty

But, however impressed you may be by the mechanical superiority of the Outstanding Chevrolet, your admiration will reach even greater heights when you study the car's distinctive beauty.

Here the whole effect is one of ultra-smartness, luxury and style. Introducing modish, concave front pillars and divided moulding, embodying the comfort advantages of greater width and length, finished in smart new lustrous colors—the marvelous new Fisher bodies represent a masterful example of artistic coachwork. Never in Fisher's long and illustrious service to the automotive industry has Fisher style supremacy been more clearly revealed! Never have beauty, comfort, convenience and staunch construction been more skillfully combined in the bodies of any automobile!

Come In and See For Yourself

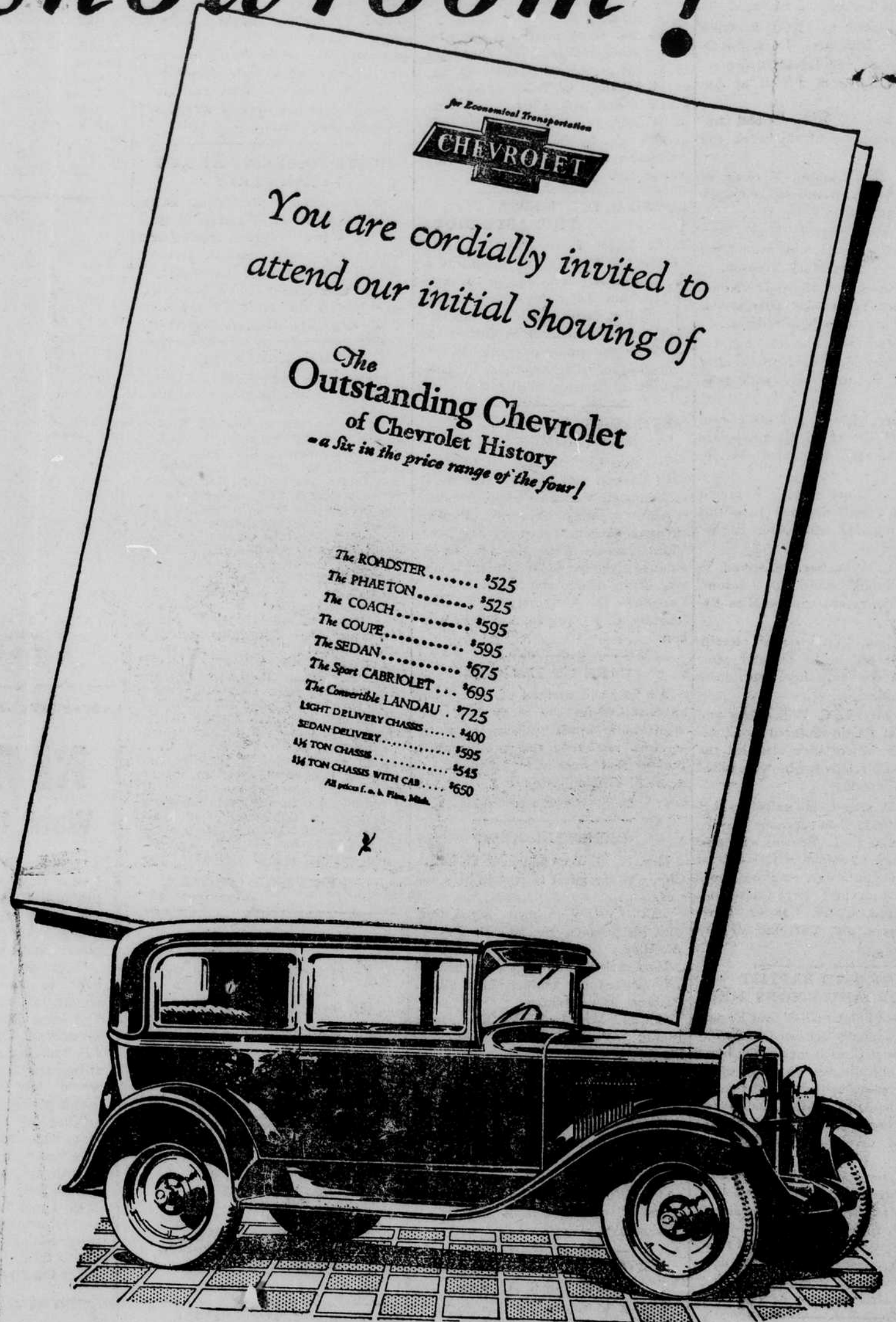
So we urge you to come in today and inspect the Outstanding Chevrolet! See for yourself what distinctive beauty and thrilling performance are now available at prices so amazingly low! Learn how Chevrolet has again established an entirely new standard of motor car value!

Come in and see these Beautiful New Cars on display in our showrooms

WOODLEY CHEVROLET Co.

Plymouth, North Carolina

L I T T L E A T L O W C O S T



A Complete Array of Outstanding Features

New Smoothness— 32% More Power

1. Smooth 6-cylinder valve-in-head motor
2. Motor fully enclosed
3. Rugged balanced crankshaft
4. Fabric camshaft gear

New Beauty

1. Beautiful new Fisher bodies
2. Beautiful new colors
3. Chromium plated radiator
4. Headlamps with chromium plated rims
5. Chromium plated headlamp standards
6. New hood with narrow louvres
7. One-piece full-crown beaded fenders
8. Rubber covered steel running boards

New Economy and Dependability

1. Better than 20 miles per gallon
2. AC gasoline pump and filter
3. Positive lubrication to all motor bearings
4. Automatic lubrication to valves
5. Self-adjusting dry-disc clutch
6. Stronger rear axle gears

Fast - Getaway— Greater Speed

1. Advanced combustion chamber design
2. High speed gear ratio, 3.8 to 1
3. Accelerating pump on carburetor
4. Hot-spot intake manifold
5. Smooth sliding gear transmission

New Comfort and Convenience

1. Longer, roomier Fisher bodies

Adjustable driver's seat in all closed bodies

3. Cadet type sun visor
4. Fisher VV windshield
5. Deep comfortable cushions
6. Indirectly lighted instrument panel
7. Water temperature indicator on dash
8. Semi-elliptic shock-absorbing springs
9. 107-inch wheelbase

New Safety

1. Separate emergency brakes
2. Foot control two-beam type headlamps
3. Theft proof Electrolock
4. Ball bearing worm-and-gear steering
5. Safety gasoline tank in rear
6. New 4-wheel brakes, safe-positive-quiet