

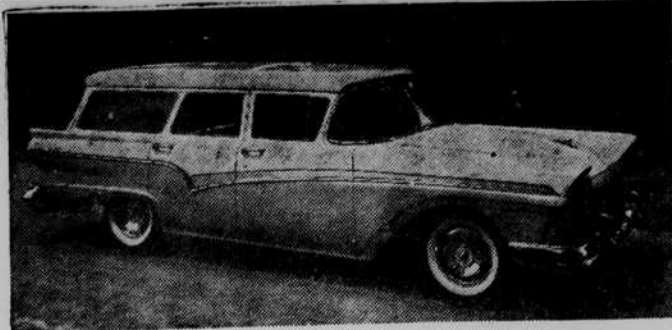
Ford Line Being Shown Here This Week at Dealer's

Bigger, More Powerful and Safer Models Advertised; Three Body Shells and Two Chassis Lengths

The 1957 models of Ford automobiles went on display at Manning Motor Company here Wednesday of this week. The special showing will continue through this week-end, said J. Roy Manning, owner of the firm.

The new Ford line represents the biggest overall change in modern Ford history, it was pointed out. The 1957 chassis has been completely redesigned for improved riding comfort and reduced car height. At the same time, nothing is lost in interior head clearance, for a lower center of gravity has been achieved through clever engineering. A tapered drive shaft enters the underlung hypoid rear axle almost an inch lower than in the 1956 models.

Swept-back ball joint suspension eliminates 33 per cent of the parts



This is Ford's 1957 Country Sedan, one of five station wagons in the new line of 19 body styles which Ford dealers will unveil. The new station wagons are longer and lower than in 1956. Four engine sizes available range from 245 down to 144 horsepower. This Country Sedan comes in nine- and six-passenger models, and has new self-raising rear liftgate with 20 per cent bigger opening for easier loading.

on previous models, it is said. Wheels are 14 inches in diameter, an inch smaller than last year. More tread surface on the road will mean greater control without sacrificing steering ease. Broad-shouldered rims give tubeless tires a firmer grip for more safety in emergencies.

Another change is in fuel tank capacity, upped by three gallons to 20 for greater cruising range. Better visibility has been secured through use of a lower angle steering column and smaller diameter deep-dish safety steering wheel.

Steering ratio was also upped for easier turning.

Longer springs means an even-keel ride with less tendency for front-end dive or rear-end dip on rapid starts. The new Ford body rides on rubber, with live rubber mounts installed at 20 points between body and frame.

As to engines, horsepower has been increased. Freer breathing, higher compression, more efficient ignition and better exhaust all have been engineered in. For the first time, a high-performance V-8 is available as optional on any Ford car. The engine is the Thunderbird Special V-8, featuring 9.7 to 1 compression ratio and developing 245 horsepower. Standard engine for Fairlane, Fairlane 500 and station wagon models is the 212 h.p. 292 cu. in. Thunderbird V-8 with 9.1 to 1 compression ratio.

Standard for Custom and Custom 300 models is the 190 h. p. 272 cu. in. engine, compression ratio 8.6 to 1.

The 144 h. p. 223 cu. in. six is available on all Ford cars.

All cars may be ordered with Fordomatic, standard or overdrive transmission.

Many new engineering features will be enjoyed by 1957 Ford owners.

For the first time in its 53-year history, Ford will produce two sizes of cars. There are 19 new models in five series featuring three different body sizes on two redesigned chassis lengths.

The biggest Ford body—more than nine inches longer and four inches lower than 1956 models—is available in Fairlane and Fairlane 500 series, the latter Ford's top line. A separate body shell is used in Custom and Custom 300 series models, while station wagons also have a separate body shell. Each series has its own distinctive side mouldings, ornamentation and interior trim.

A striking new styling feature of the new cars is a gold-filled metallic color which gives with two-tone enamel schemes a three-tone effect. Also, all colors, upholstery materials and trim are new.

Former Minister To Preach Here

The Rev. Jesse Parks, minister of the Presbyterian Church at Wilow Springs will be the guest speaker at Plymouth Presbyterian Church during "Religious Emphasis Week," October 8-12, it is announced.

The services will be conducted nightly, beginning at 7:30 o'clock, from Monday through Friday.

Mr. Parks, while a student at Union Theological Seminary, Richmond, Va., served as student pastor here and laid the groundwork for the local congregation, it is stated.

During the special weeks of services the Rev. James D. MacKenzie, minister at Edenton Presbyterian Church, will lead the congregation in singing.

The upcoming Religious Emphasis Week marks the first such observance here since organization of the church in October of 1953. The special series of services will be incorporated into the program of the church as a regular feature in the future, the Rev. Robert L. Combs, church minister, states.

Instrument panel, door handles, window lifts and front window vent latches have been restyled to match the new exterior lines.

Roofs have been strengthened with steel center bows. Hoods are hinged at the front for greater safety and accessibility. Hood release has been moved to instrument panel, making engine compartment tamper-proof when car is locked. Fresh air intake has been shifted to cowl in front to prevent exhaust fumes from being drawn into car.

For 1957 a broad range of optional features is offered including airconditioning, tinted glass, six- and eight-tube radios, and heaters.

The new styling starts with wide hooded headlamps and forward-slanting grille, and takes in streamlined wheel openings, windshield wrapping farther around sides for added visibility, distinctive outward tilted rear fins, and contoured sides.

It is genuinely a NEW model, observers agree.

Autos Running Into Trains Really Seeking Scrapheap

Chicago.—Some motorists seem to insist on getting hurt! Take those who are involved in railroad grade crossing accidents, for example.

Two out of five of these accidents occur at crossings protected by gates, lights, bells, watchmen or a combination of these, according to the 1956 edition of the National Safety Council's statistical yearbook, "Accident Facts."

BELK-TYLER'S OF PLYMOUTH

Has Specials for All the Family Every Day

Ladies' Coats

FOR

Dollar Days

One Big Rack All Wool Ladies' Coats

Solid colors, novelty materials in newest styles. You can put these COATS on lay-away. You will find materials in these COATS that you will find in COATS valued to \$30.00.

JUST FOR DOLLAR DAYS

SALE! \$15.00

Ladies' Colorful New FALL COTTON Dresses

Sizes for juniors, misses, women and half sizes in a wonderful collection of styles, colors and fabric finishes that are sure to please you!

★ ★ ★

\$5.95 and \$8.95

"HEIRESS" SEAMLESS NYLONS

Beautiful quality 15 denier nylon in either plain or mesh style. All colors and sizes!

97c pr.

COLORFUL NEW "DRIP-DRY" DRESS FABRICS

A galaxy of favorite fall colors in stripes, plaids, checks and novelties. Sew and save on all your fall needs!

59c yard

BIG ASSORTMENT NEW FALL WOOLENS

100% wool and wool blend fabrics in solids, plaids, checks and novelty weaves. 56" to 60" widths for coats, suits, skirts, dresses

\$1.98 yard

EXCITING NEW DRAPERY FABRICS

Many exciting new fall fabrics in a host of wonderful new decorator colors! Dress up your home during the dreary winter months with new drapes!

\$1.00 yard

SPECIAL! MISSES' "Back-to-School" Bermuda SOCKS

Sizes 8 1/2 to 11 in white and colors. A regular 69c value. Special Tomorrow!

59c pair
2 PAIRS \$1.00

Popular New Misses CAR-COATS

Sizes 8 to 18 in water-repellent poplin. Many colors, popular styles. See them now!

\$8.95

100% WOOL AND 100% ORLON SWEATERS

Completely washable 100% orlon that doesn't shrink or stretch! Sizes 34 to 40. You'll love the big choice of colors. Long sleeve cardigans or short sleeve pullovers!

\$3.98 and \$5.95

GIRLS' ORLON OR WOOL SWEATERS

Sizes 3 to 6x and 7 to 14 in either 100% wool or 100% orlon. Choose from many fabulous new colors in either short sleeve pullovers or long sleeve cardigans!

\$2.98 and \$5.95

MEN'S "IVY-LEAGUE" STYLE COTTON TWILL PANTS

Sizes 28 to 36 in sanforized cotton "Ivy-League" style Khaki and black! The most popular pants we've ever had!

\$3.98

Boys' Sizes
Special \$2.98

BOYS' COTTON, WOOL AND ORLON SWEATERS, \$1.98 to \$4.98

FOOD BUYS

step right up to these...

JEWEL SHORTENING, 3 lbs. 69c

F-BONE — SIRLOIN — ROUND STEAK ... Lb. 69c

SMALL SMOKED PICNICS .. Lb. 45c

HOT OR MILD — POUND ROLL Honeycutt Sausage Meat, 39c

PIT-COOKED MARTIN COUNTY Barbecue Lb. \$1.29

INSTANT MAXWELL HOUSE COFFEE 6-Oz. \$1.49

MISS CAROLINA 100% PURE INSTANT COFFEE 6-Oz. \$1.13

16-OZ. KRAFT'S Orangeade.. 49c

TOMATOES, 2 no. 303 cans ... 25c

25-LB. BLEACHED, ENRICHED, GUARANTEED Self-Rising FLOUR, \$1.69

5-LB. BAG GRANULATED QUAKER CANE SUGAR 49c

FAMILY SIZE, 5-LB. JAR CORNED MULLET, \$1.85

SALT HERRING FILLETS, 3 lb. jar 95c

A KRAFT FOODS PRODUCT — GELFAND'S SALAD DRESSING, full qt. . . 45c

★

Shop With COMFORT and CONVENIENCE — AT —

KELLY'S SUPERETTE

Trade Where Your Business Is Appreciated

REMEMBER

Plenty of Free Parking at Kelly's

OLD STAGG

5 Year Old

BOURBON

The Top BOURBON of Kentucky

OLD STAGG

KENTUCKY STRAIGHT BOURBON WHISKEY

BOTTLED BY THE STAGG DISTILLING COMPANY, FRANKFORT, KENTUCKY

86 PROOF - STAGG DIST. CO., FRANKFORT, KY.

\$2.45 PINT
\$3.85 4/5 Qt.