

Brevard News

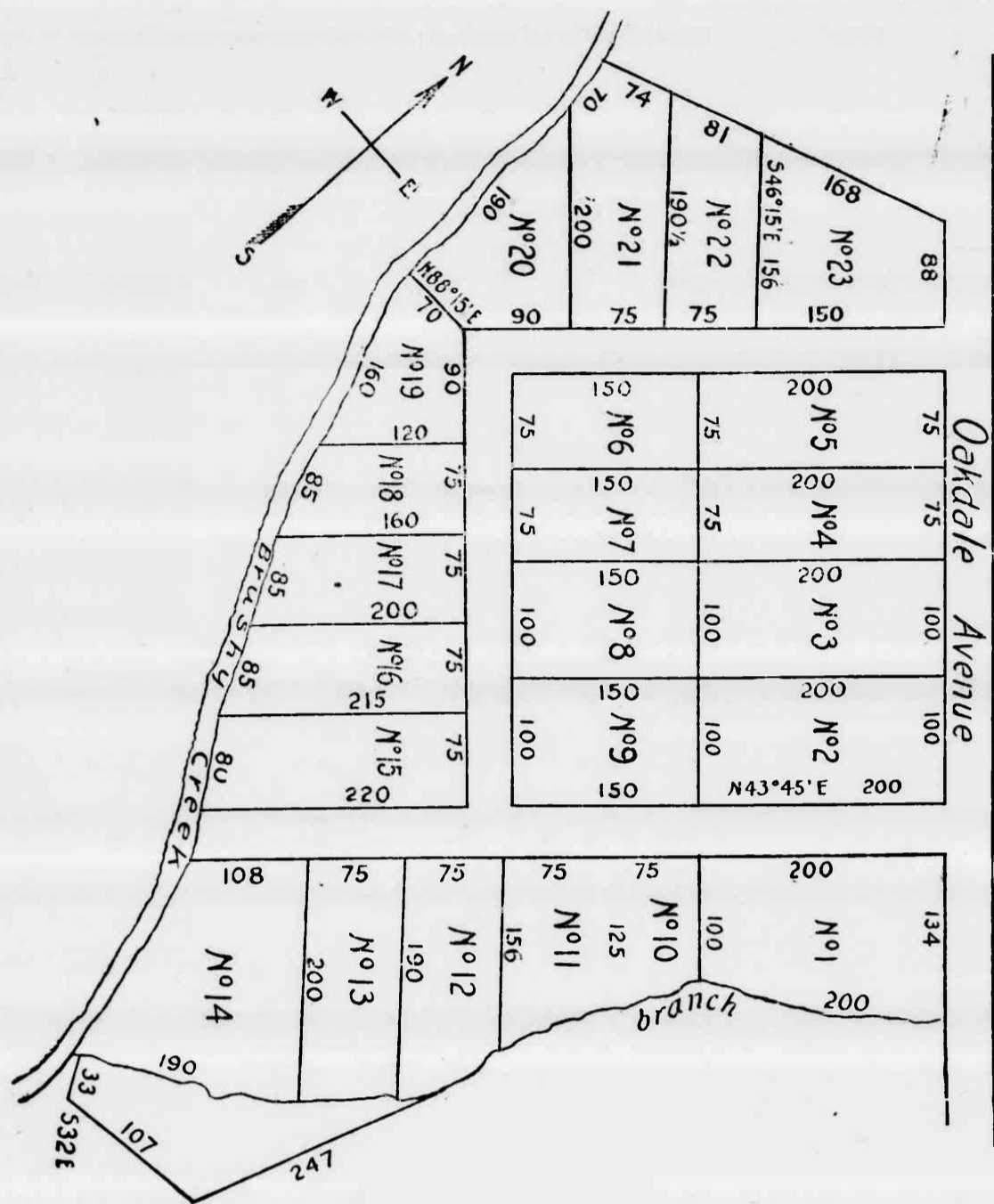
(Name changed from Sylvan Valley News, January 1, 1917.)

VOLUME—XXII

BREVARD, NORTH CAROLINA, FRIDAY, FEBRUARY 9, 1917.

NUMBER—6

MAP SHOWING LOCATION OF TRANSYLVANIA TANNING COMPANY



The map herewith gives a fairly good location of the tannery. Oakdale avenue intercepts Caldwell street and Rosman road passing home of Dr. E. S. English and running parallel with the Southern railway. The plant is located near the position of the vane showing geographical directions. A bridge has been erected across Brushy creek at the end of the street leading from Oakland avenue and approach is made to the plant from this street and also from the Rosman road.

Concrete Foundation of Tannery Plant Over One-Eighth Mile Long Completed; Increase Pay Roll From 46 to Over 100

Work was progressing rapidly on the plant of the Transylvania Tanning company until the cold wave arrived.

J. M. Kilpatrick, who is superintending the work, says that until the sudden change in temperature there were 46 men on the pay roll and that within two weeks more than 100 men will be working on the plant if weather conditions permit.

The concrete foundation for the main building, 70x683 feet, has been completed under weather conditions most favorable. The concrete is as much as nine feet high at places. This main building will accommodate 600 vats. It will be two and one-half stories high. Seven other buildings will be grouped about. A one-story office building 32x36 feet has been started on the Rosman road opposite the plant.

The Southern has built a spur track to the plant. It leaves the Southern's main track at the yard limit post about midway between the residences of Dr. E. S. English and W. H. Duckworth.

G. E. LATHROP, ACCOUNTANT, MAKES STATEMENT OF THE FINANCIAL STATUS OF COUNTY

Brevard, N. C., January 25, 1917. To the Commissioners of Transylvania County:

In accordance with your request that I examine the books and records of this county in your office, and render to you an account of the state of the finances of the county ascertained therefrom, at the time the present board entered upon duties of the office; I beg leave to submit the following report upon the so called general accounts of the county as I find them.

It should first be called to your attention, that the accounts, bills and vouchers, have not been so kept, that an audit of the same, in the strict meaning of the term, is possible; but the figures herewith are believed to be approximately correct, as shown by the books, accounts and papers of the county supervisors at the time you assumed office, the preliminary balance being verified by comparison with those shown by the county treasurer.

1st. The rail road bond account shows a balance on hand December 4, 1916, of \$1,547.32, a sum insufficient to meet the \$1800.00 of interest coupons due January 1, 1917. No sinking fund exists for the retirement of any part of the two issues of these bonds, amounting to \$85,000.00, nor has one been provided for, so far as I can ascertain.

2nd. The fund for the relief of the indigent and paupers shows a balance on hand December 4, 1916, of \$1,864.50 with orders and bills outstanding of \$64.05, leaving \$1,800.45 in your hands, which will no doubt suffice for the demands upon this fund until the proceeds from the taxes now in process of collection are available; a fact to which I call your special attention, as it is the only one of such cheer and comfort, that I will have to offer you in this report.

3rd. The chain gang account shows on December 4, 1916, an overdraft of \$2,764.48. Outstanding bills contracted for former board, \$889.41. Outstanding orders December 4, 1916, therefore made by the old board on the treasurer, \$47.97. A total deficit of \$3,701.76 which the total levy for the present year, even if at once available, falls some six or eight hundred dollars short of covering.

4th. The bridge fund account on December 4, 1916, shows an overdraft of \$4,028.38.

| | |
|---|-------------------|
| Old orders outstanding..... | 529.12 |
| Old contracts and bills outstanding..... | 3,676.16 |
| Total indebtedness December 4, 1916..... | \$8,233.67 |

In this account is included the cost of the new iron bridge across the French Broad river at Blantyre, for the expense of which one half of the amount, or \$1,412.08 is due to this county by Henderson county. While it is no doubt superfluous to do so, I mention the fact, that the total tax levy for this account this year amounts to only \$1,721.35, to be decreased by commissions, insolvents and errors discovered.

5th. The contingent fund, so called, which is to cover all the expenses of the county, not provided for by special levies, including the heavy ones for courts, juror and witness fees, as well as your own for general administration, shows on December 4, 1916:

| | |
|-------------------------------|------------|
| An overdraft of..... | \$7,454.14 |
| Old orders outstanding..... | 568.17 |
| Unpaid bills outstanding..... | 457.72 |

Total debt on this account December 4, 1916.....\$8,479.72 which the taxes for this fiscal year will fall all of \$2,000.00 short of liquidating, to say nothing of all the expenses to be provided for until the taxes due in 1918 are available.

Therefore the total current indebtedness when you took charge of the office December 4, 1916, for chain gang, bridge and contingent purposes was \$19,063.72.

Any additional information, details or recommendations relative to the foregoing report that I can give will be gladly supplied.

Respectfully submitted,
G. E. LATHROP,
Accountant.



METHODIST CHURCH BUILDING

Revival At Methodist Church In Progress For Two Weeks

The special services at the Methodist church began Sunday morning. Afternoon and night services are being held this week and will continue through next week.

Prof. Daniel Ward Milam, the musical director, who was expected on Saturday, did not arrive until Tuesday night, coming from a big union revival in Spencer, W. Va.

Rev. W. E. Poovey, the pastor, has been preaching at night while Prof. Miles Reese has been giving a series of four "quiet talks" in the



REV. W. E. POOVEY
(In his college days.)

afternoons. Next week Mr. Poovey will preach four sermons in the afternoons to children and will continue with his sermons in the evening services which will begin at 7:15.

On Monday night the pastor took a shot at "Lying Christians." The weather was very unfavorable and the congregation was small and it was to be regretted that the pastor's strong message failed to reach those for whom it was mostly intended. He minced no words about the harm that the indifferent and inconsistent church members do in keeping the lost from the church.



PROF. DANIEL WARD MILAM

and from their acceptance of Christ. On Tuesday night Mr. Poovey touched upon the backsliders, basing his remarks upon blackslidden Biblical characters.

Mr. Poovey is delivering some

For God So Loved the World.

1. For God so loved the world He gave His only son, That whosoever believeth in Him should not perish, but have everlasting life. 2. For God so loved the world He gave His only son, That whosoever believeth in Him should not perish, but have everlasting life.

FRONT:

That voice crying, 'Behold your redemption.' The story of Jesus, He pointed out to us, Let us be ready when He comes again to us.

THAT HIGHER MUSIC: So, that whoever or be-forehand may have a- call life, that was never be-forehand may have a- call life.

Copyright, 1916, by Charles B. Timmons.

ONE OF PROF. MILAM'S FAVORITE PRODUCTIONS

good, practical messages and those who hear him are able to gather their meaning clearly and yet his sermons are of a nature that even the backslidden and indifferent cannot resent the plain truths in the pleasing and convincing way in which they are given.

Mr. Poovey is now giving his second year's service in Brevard and this is the first special meeting to be held during his local pastorate.

Something of Choirmaster

Prof. Milam comes highly recommended as a choir director and composer of gospel music. In addition to having a natural musical ear, he has studied in the Chicago Music college, where he made a specialty of harmony, composition,

thorough base, musical history, voice and chorus directing, etc. He holds diplomas from the Chicago conservatory of music and that at Dallas, Texas. He has conducted large choirs in all the Southern states and in many of the northern and western states and he has had such marked success and his work has been received with such popular favor at places that he has returned to a few places as many as four times.

Mr. Milam comes from a musical family, his father and grandfathers on both sides were musical directors. He began the study of music early in life, singing his first solo at 6 years, "A Shelter in the Time of Storm," by Ira D. Sankey.

COUNTY COMMENC'MT ON OCTOBER TWELFTH

At the meeting of the public school teachers of the county in Brevard Saturday it was decided to hold the county commencement on October 12.

The teachers also decided to have a uniform examination for seventh grade pupils and the following committee will co-operate with Supt. T. C. Henderson in preparing questions and grading papers:

J. C. Jones, O. S. Dillard, A. P. Bell, Miss Susie Jordan and Miss Sue Cannon.

These examinations will be held on April 18 and 19 and the diplomas will be awarded at the county commencement.

The teachers unanimously adopted a resolution endorsing the proposed plan of a state board of examiners and institute conductors and recommended its passage by the legislature.

P. W. NORMAN'S CHILD IS BURNED TO DEATH

Lewis, the two-year-old child of Mr. and Mrs. P. W. Norman of Pisgah Forest, was fatally burned last Saturday, death resulting on Sunday morning.

Mrs. Norman left the child in the room for a few minutes and upon her return found his clothing on fire. Before the flame could be extinguished the boy had been so seriously burned that death followed on the following day.

Interment was made at the Davidson River cemetery Monday at 2 o'clock. Rev. Mr. Morgan conducted the funeral.

APPRAISING FARMS

The Transylvania Farm Loan association through its appraising committee purposes to appraise the farms of the members of the association on Tuesday of this week, starting at Lake Toxaway and working through the county to Blantyre.