

NOTICE TO DELINQUENT SUBSCRIBERS—We are sending you the BREVARD NEWS this week in the hope of retaining your name on our mailing list. We are going to give you the best we have and with your co-operation we can make this one of the best weekly papers in the State. Don't miss another copy, but send in your subscription at once and let's all pull together for a GREATER BREVARD AND TRANSYLVANIA COUNTY. You need your home paper and your home paper needs you, so write you think of it, sit down and write a check or money order for a year's subscription at \$1.00 or six months at 50c. *Don't put this matter off any longer. Next Week we are going over the list and cut off all delinquents.*

YOUR EYESIGHT AND CARE OF THE EYES

Next To Life Itself Sight Is Man's Most Valued Possession.

TAKE GOOD CARE OF EYES

Modern Working Conditions Increase the Burdens of the Eyes and Cause Eyestrain.—Glasses Properly Fitted By Optometrists Prevent Strain and Other Eye Troubles.

Next to life itself sight is the most valuable thing you possess.

To do the most efficient work, to get the most enjoyment out of life, you need your eyes in the best possible condition.

The first indications of eye trouble should have your immediate attention. Such troubles come on so gradually that they are not realized at first, but as soon as recognized they should be attended to, as eye defects continue to grow worse, if neglected.

The most common troubles are the results of eyestrain, which is exceedingly prevalent. Unless the strain is promptly relieved permanent injury to the eyes is likely to result, and merely because of neglect for a time a person may suffer a life-long handicap of poor sight.

The prevalence of eyestrain undoubtedly is due to the fact that modern living and working conditions are putting increasingly heavy burdens on the eyes.

Eyestrain frequently comes from working under improper lighting conditions, or it may be caused by going without glasses when they should be worn, or by wearing glasses the lenses of which are not ground correctly for the wearer.

There are many symptoms of eyestrain, the most common being pains in or about the eyes, headaches or nervousness. These symptoms become aggravated when the eyes are used without rest for any length of time.

Besides these more or less easily recognized symptoms, there are many other more remote troubles which may indicate eyestrain.

When eye troubles reach more advanced stages there may be difficulty in seeing distinctly, or the outlines of objects may appear blurred. Sometimes there is an unevenness in the appearance of straight lines or an unequal brightness of different parts of objects. These latter visual defects are due to astigmatism.

Frequently a person who sees distinctly has eye defects which, however, are not so great but that the eyes can produce distinct vision by extra muscular exertion. But the constant muscular exertion necessary to produce such distinct vision will lead to eyestrain if continued for any length of time.

Such persons often suffer from headaches or nervousness without realizing that eye trouble is the cause.

If strained eyes are not relieved within a short time by proper glasses permanent injury will result, and the sight can never afterwards be restored to what it should have been. While the eyes will stand a great amount of misuse, if misused too long there is no way to make them "as good as new."

EYESTRAIN AMONG SCHOOL CHILDREN

Eyestrain causes numerous physical ills, through what are known as reflex nerve troubles.

Many cases of stomach, liver, kidneys, bowel and nerve troubles have been entirely cured by correcting the eyes with proper glasses, which thus relieve the eyestrain.

When the cause is relieved, the effect speedily disappears.

The principal symptoms of eyestrain among school children are:

Headaches. Most headaches are caused by defective vision. Proper glasses will relieve them.

Head-tilting. Indicates imbalance of the ocular muscles, a serious condition.

Halting, hesitating readers; always a sure sign of imperfect vision.

Holding the book too close. Does not always indicate nearsight, but at times means defective eyes.

Fast Blinking Motion—unable to see written on blackboard.

Dread of light—squinting.

Nervousness, irritability. This condition frequently leads to St. Vitus Dance or Chorea. This malady yields readily to proper glasses.

Strained Expression—furrowed brow, indicating weak, painful vision.

Parents can best serve their children by having their eyes corrected at the proper time and when needed. Care in youth usually enables the child to outgrow eye defects.

The efficiency of the child will be increased and his health conserved.

If in doubt as to your child's eyes, take him to a reliable optometrist and learn the truth.

Most disease are caused by nerve exhaustion, which is frequently the result of eyestrain. Put the eyes in focus and EASE takes the place of DIS-EASE.

Help the child to help himself.

THE VALUE OF FINE HIGHWAYS

Improve Social Conditions and Business Transactions.

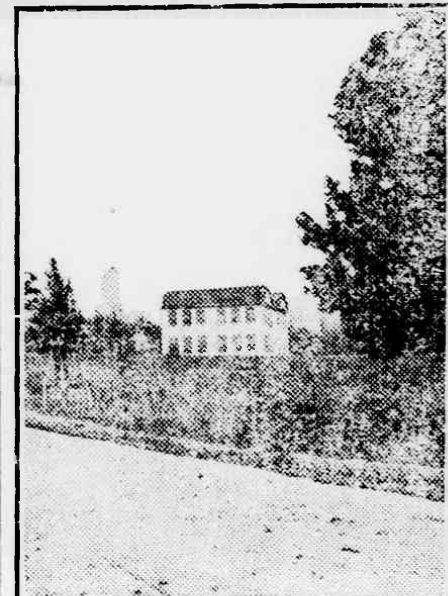
BETTER SCHOOL ATTENDANCE

A 15 Per Cent Increase in the Proportion of the Available Children Attending Schools Took Place Following Construction of Good Roads in Eight Counties.

A 15 per cent increase in the proportion of the available children attending schools took place following the construction of good roads in eight counties studied by the office of public roads and rural engineering of the department of agriculture, it is shown in a recent publication of the office. The improvement in roads was followed also in several of the counties, the report shows, by consolidation of a number of the little one room schools into graded schools, which give the pupils better educational advantages; by a development of various industries and by social improvements due to easier intercourse. These improvements are related closely to increases in land values and decreases in hauling costs, effects also traced to the construction of improved roads.

In Spotsylvania county, Va., the average daily school attendance increased from 57 per cent of the enrollment before the roads were improved to 77 per cent after. Several small schools were consolidated. Between 1899, the year preceding the building of good roads, and 1913, the year following their completion, the shipment of forest products, the principal products of the county, increased more than 78 per cent. The increase during this period in the poultry business in the county was 77 per cent and in dairying 110 per cent.

In Dinwiddie county, Va., the average daily attendance for children for thirteen schools on the improved roads was 63.1 per cent of the enrollment in



THE GRADED SCHOOL TAKES THE PLACE OF A NUMBER OF LITTLE ONE ROOM COUNTRY SCHOOLSHOUSES.

1912-13, while the average attendance for all other schools in the county was 56 per cent. Several school consolidations have been effected, larger school buildings have been constructed, and pupils have been transported to school at the expense of the educational system since the road improvements were made. Truck gardening and dairying, which were profitable only within three miles of the principal market town of the county before the road improvement, are now carried on profitably within a seven mile radius.

In Lee county, Va., a considerable industry has been built up following the road improvements in the shipment of tanbark, extract wood and pulp wood, products which could not be profitably handled over the unimproved roads. The improved highway system has attracted buyers of farm products who travel from farm to farm and furnish a new cash market for the farmers. There has been a 25 per cent increase in bugles since the county vehicle factory.

In Wise county, Va., social conditions have been bettered since the good roads were constructed. Many farmers along the improved highways having built new homes or improved old ones, adding sanitary conveniences. School attendance has increased materially, but since compulsory attendance regulations went into effect about the time the improved roads were completed the influence of the two factors could not be determined separately. Several school consolidations have been made.

Automobile registrations in Franklin county, N. C., increased from 371 before the road improvement in 1914 to 523 after road improvement in 1914, and two automobile bus lines connecting distant towns in the county were established as soon as the improved roads were opened.

There has been a notable stimulation of dairying and general diversification on the farms of Dallas county, Ala., since the improvement of the roads of that county.

In the section of Lauderdale county, Miss., where most of the roads have been improved, the school attendance increased from 72 per cent of the enrollment in 1912, just after the road work started, to 81 per cent in 1913, after the completion of the work. Several school consolidations have been effected.

Next Call of Drafted Men

The local exemption board will call out about 50 men of the county quota to report for duty next week. It was expected that only 31 men would be taken in the next call, but the failure of some counties to meet requirements at the present time caused an increase in the percentage of this county to be called.

Dr. McKinney Gets Commission

Dr. McKinney received Wednesday a commission with the rank of first lieutenant in the dental reserve corps. His call to service is now looked for at any time.

First Corn of Year Milled

W. P. Henderson reports the grinding at his mill of the first corn of 1917. It was grown by A. V. Breck, the jailer. Though away ahead of the season, it was well matured.

Renew before expiration.

Diversified Ads Are Business Builders

One cent a word for first insertion, one-half cent a word for each subsequent insertion, each initial or abbreviation counting as a word.

WANTED—Two or three grown hogs. J. W. Smith. 9-7-tf

LOGS WANTED—We pay cash. Miller Supply Co. 3-2-tf

CASH PAID for chickens, eggs, wool and hides. City Market. 9-14-tf

WANTED—Second-hand buggy in good condition. X, care Brevard News. 9-7-2tp

TOWN LOTS, farms and timber lands for sale. Frank Jenkins, Brevard, N. C. tf

WANTED—Chickens and beef cattle. Osborne Market, next door to Bishop's. 6-8-tf

FOR SALE—Two good milk cows; prices reasonable. Apply to C. M. Sniard. 9-7-tf

FOR RENT—Furnished or unfurnished house. Rates reasonable. Mrs. D. B. Hancock. 8-31-4tp

NICE eating and cooking apples; also for canning. 50c a bushel at orchard. R. H. Zachary. 9-7-4tp

FOR SALE—Valuable draft, buggy and saddle horse, and 3 fine milk cows. Dr. C. W. Hunt. 9-14-4tp

MARK WANTED—Chestnut Oak and Hemlock. Highest cash market price. Transylvania Tanning Company, Brevard, N. C. 4-27-tf

FOR SALE—One seven-year-old black horse; good buggy and draft horse. Also some nice pigs. R. H. Zachary. 9-14-tf

SALESMAN WANTED—Lubricating oil, grease, specialties, paint. Part or whole time. Commission on basis until ability is established. Man with rig preferred. Riverside Refining Company, Cleveland, Ohio. 1tp

APPLES BY THE FOOT

The News this week was the surprised and happy recipient of a box of apples sent by S. Galloway of Lake Toxaway. The box was an ordinary shoe box, and it was completely filled by four red apples. Curiosity prompted a measurement, and it was found that the largest was 13 inches in circumference,

while the smallest—or least large—measured exactly a foot around. The weight of all four was 3 pounds 5 ounces, and their total length in circumference was a little over 4 feet.

Your friends would be pleased to receive marked copies of the News showing your whereabouts and activities; 5 cents a copy.

WANTED!

Will pay \$1.00 Cash for No. 1 Potatoes

A. N. Jenkins Store at Depot.

FERTILIZE That Wheat and Rye

Wheat and rye that is fertilized yields several times the cost of the fertilizers over what would have been the usual yield.

Our fertilizers are all fresh. We did not carry any over from the spring shipments. A car of NEW GOODS will be here Tuesday. Don't take any chances by purchasing old fertilizers. The best wheat grower in the county uses our guanos. The government says that wheat will bring \$2 per bushel next year. Get busy and plant some.

We have 16 per cent acid, 10-2-0, 8-2-2, 8-3-3. Place your order early.

Doyle's Fertilizers do not cost money—they make it.

Brevard Hardware Co. Brevard, N. C.

J. W. McMINN
W. P. WEILT
J. M. ALLISON

NOTICE THAT COLD SNAP?

It was the first warning of winter. Forewarned is well warmed if you get one of **OUR HEATERS**

Why Go to Florida, when you can make Florida all over your house with **OUR FAVORITE BASE BURNER**

OUR VERY BEST HOT BLAST

is the strongest and best hot blast stove made. It is a really excellent heater (will hold fire 20 hours) with a full of soft coal. It will burn ANYTHING—no coal is too cheap or poor for it.

Has the heating power of coal goes up the chimney as fast as ordinary heaters are used. In the O. V. B. Hot Blast, this gas is oxidized and burned so that less coal is used and more heat obtained. This is accomplished by means of the Hot Blast Draft which takes in fresh air at the top of the stove, heats it to more than 600 degrees and forces it over the upper surface of the burning coal. The gas is thoroughly oxidized and burned, giving out 50% more heat than is obtained in ordinary heaters. This Hot Blast stove will burn less hard wood than a base burner, to heat the same room. It gives off a uniform heat and is absolutely air tight. Don't worry about the price of hard coal. This Hot Blast solves the problem. Inquire for it, and see for yourself. It is much better and heavier in every way than any other similar stove sold. See it before you buy.

FARMERS SUPPLY COMPANY