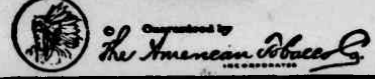


Do you know you can roll 50 good cigarettes for 10cts from one bag of



GENUINE "BULL" DURHAM TOBACCO



DEATH OF MRS. CLIFFORD RAXTER:

Mrs. Clifford Raxter died Monday morning about 1 o'clock at the Mountain Sanatorium, where she has been taken a few days previously for treatment. Death followed the birth of an infant, which lived only a few hours.

Mrs. Raxter was before her marriage Miss Eva Allison, daughter of William Allison, whose home is on the Wilson's bridge road, about two miles from Brevard. She was married about two years ago to Clifford Raxter, and their home was near Rockbrook.

Mrs. Raxter was a member of Carrs Hill Baptist Church, a consistent and faithful worker in the church and Sunday School, and was organist for the church for a number of years. Being of a modest and kind disposition and sincere in her relations with others, her circle of friends was constantly growing larger.

Mrs. Raxter is survived by an only sister, Mrs. Pittman of Travellers Rest, S. C., her father and mother, and a number of relatives living in both North and South Carolina.

The funeral on Monday at 3:30 P. M. was conducted by her pastor, Rev. S. B. McCall of Carr's Hill and the body interred in the Carr's Hill cemetery. The pallbearers H. A. Orr, Dewey Moore, Ewart Raxter, John McKelvey, and Ellison McCrary.

The funeral was largely attended by the local people and many others from various parts of the County.

IN THE SPRING YOUR BLOOD NEEDS A TONIC

Winter Weakens Blood, Makes Faces Pale. Take Gude's Pepto - Mangan.

THE BEST KNOWN BLOOD TONIC

Drowsy Spring - Fever Feeling That Comes from Sluggish Blood Will Soon Leave You

As all growing things on earth shoot into new life in Springtime, so do the billions of cells that make up each part of the body renew their vigor.

As you open the windows, breathe the Spring air, and let in the sunshine, the red corpuscles in your blood should carry more oxygen to the tiny cells.

The red corpuscles are tiny disc-shaped particles, swimming in enormous numbers in the blood. They carry oxygen to cells in all parts of the body, and they carry away worn-out waste matter. Sometimes, especially in the Spring, after the winter indoors and more or less sickness, the red corpuscles themselves need rebuilding. Gude's Pepto - Mangan contains just the ingredients to give them greater power to absorb oxygen and to distribute it throughout the body.

That is why it is such a good Spring tonic. It helps so much to bring back color to cheeks made pale and wan by the necessary indoor winter life. It adds to the number of red corpuscles. With fine Spring days and Gude's Pepto - Mangan you gain in vigor and attain good health.

Don't go around drowsy this Spring. Take that good tonic, Gude's Pepto-Mangan. You can get it in tablet form or in liquid form at your druggist's. Both forms have the same medicinal value. Insist upon genuine Gude's Pepto-Mangan. Advertisement.

A TRIBUTE TO ROBERT ORR:

Wm. A. Band:-

Allow me to offer but a small tribute to the memory of our friend, Robert Orr. "First impressions", I have always heard, "are lasting". I was not much acquainted with Mr. Orr. I do not remember but one conversation with him, in that one he impressed me indelibly. Incidentally meeting up with him during his term of service as county commissioner and being impressed with the unexpected degree of progressiveness that characterized the working of his board - building the county home that the infirm might be more comfortable in buildings that reflected credit to the county; the employment of a demonstrator that previous boards had refused to do and other progressive departures, led the writer to remark: "It is a question in my mind as to whether you are going to make or break with the people." He replied: "I can't hope to please all the people, but I intend to use my best endeavors and judgment in doing and to do it in a non-partizan way; we have already employed a manager for the home," he said, "I do not know whether he is a republican or democrat, but I feel sure he is the best available man for the place. I would like to please the people, but I can't do violence to my conscience for that purpose," or words to that amount.

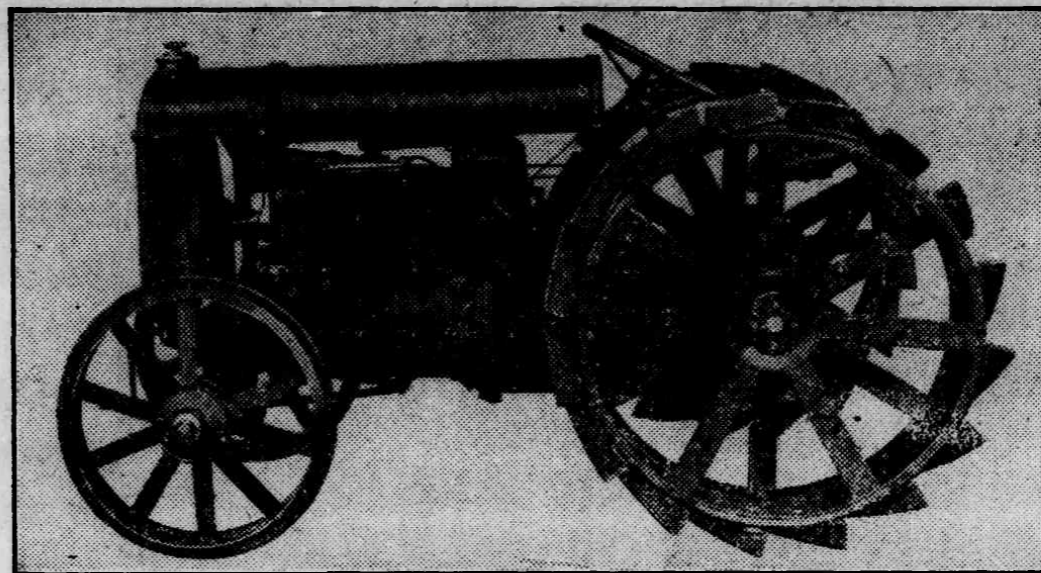
Thinking in him I observed a strong individuality and unselfish motives in the discharge of a public trust I could but watch the public estimate of the man and his board. Boards, previous and subsequent, undertaking enterprises looking to the welfare of the people were led up in almost terrible terms before the tax-payers by the opposite party. The action of the county commissioners become largely the habitual thunder in local politics. It is true I have mingled with the people but little recently, but in that little I have heard less criticism against Orr's board that did something in a progressive way than I have often heard hurled against its predecessors that did nothing to arouse the ire of tax-payers.

I remember in the Confederate army comrades, having families at home, often got news of sickness or distress of loved ones, crying for their presence. Applications were hurried up to headquarters for furloughs, if returned marked, "Disapproved," by colonels, brigadiers or major-generals these poor helpless men were so cut to the heart it was often difficult to restrain them from military censure. Should these applications come back marked "Disapproved" but signed, "Wade Hampton" or "R. E. Lee", strange, these applicants melted down in meek submission. To my best recollections I never heard a soldier censure Lee or Hampton for any act, general or special, they did. Hampton was the idol of the South. Lee of the world. Why so, but that mysterious touch called, individuality. What these men were in a great sphere Mr. Orr was in a less circle. Neither they nor he could help being great in their relative positions. It was not acquired; they were put up that way. They were not aware they were moving in an atmosphere that bore them aloft; neither did those about them think of them other than common with themselves. Why was Mr. Orr not more severely criticised in his official acts? I am told his employees wept when informed of his death. I am told the attendance at his funeral surpassed anything of the kind ever held in Brevard. He was but a man, though a good man, honest, fair, upright, pure. A man who thought himself equal to the best and superior to none. Some how he had a grip upon the people. That's all we know J. M. HAMLIN.

TAX LISTERS APPOINTED

The commissioners appointed the following tax listers: Brevard, T. T. Loftis; Boyd, W. L. Talley. Catheys Creek; R. L. Hogsted; Dunns Rock, V. B. McGaha; Eastatow, Whit Duncan; Gloucester, Hensen McCall; Hogback, E. D. Owen; Little River, A. J. Benningfield.

THE FORDSON TRACTOR



The Fordson Tractor then asks you to buy it because of what it has done for your neighbors. It asks you to buy it on its merits. It asks you to buy it, Mr. Farmer, because you have use for it every day in the year. All the uses for the Fordson Tractor have not yet been uncovered because new places where machine power can take the place of human power, where machine power can take the place of human power, where machine power can supplant horse and mule power, are being found every week, and wherever such discovery occurs, the Fordson Tractor will fill the bill more satisfactorily than any other form of power.

The Fordson is simple in design, and it is very strongly made of the highest quality of iron and steel. It is the product of the greatest mechanical genius the world has ever known, and it is most economical in first cost and after expense. The Fordson Tractor on your farm will increase the value of every foot of ground in that farm. It will put more dollars and cents into every hour you put into the farm.

Now why not have a Fordson right away? Take up the subject with us. Come in and get the details, and all the particulars. It is only a matter of time until you buy a farm Tractor - that is sure. So don't put it off when it means money to you to act promptly.

There are many Tractors clamoring for the patronage of the farmer. The very air is charged with the noise of claims. One would think that all the farmer had to do was to buy a Tractor and he would enter into the Millennium.

Well, consider this fact - there are a great many different makes of Tractors. Tractors have been on the American market for twenty years. In that time some three hundred thousand Tractors have been sold to the farmers in the United States. The Fordson Tractor has only been on the market two years, and in that time more than one hundred thousand Fordson Tractors have been sold to the farmers of the United States.

Two and two makes four. Two and two always will make four. If the Fordson Tractor had not delivered more good work, more satisfactory work, more economical work, than any other farm Tractor, it would not have sold in the ratio of anywhere from five and more to one. "The proof of the pudding is in the eating." The proof of the superior merits of the Fordson Tractor is in its larger sale and use.

BREVARD MOTOR COMPANY

C. H. KLUPELBERG, Manager

Ford Cars Ford Service Ford Parts Fordson Tractors

LIBRARY HOURS CHANGED:

Beginning with Monday, March 14th, the U. D. C. Library will be open from 3 to 5 P. M.

BREVARD INSTITUTE NOTES

On Monday afternoon, the members of Mr. Gray's Sunday - School class took a hike up the Glen as far as Pennell's Cove. Mr. Gray went with them. They took their supper and had a most interesting outing.

A party of B. I. Students and teachers, went to Elk Lodge Monday A. M. to see the sunrise. This seems to be a never-failing source of interest, and not a week passes without this Monday - morning pilgrimage.

Saturday afternoon a party of fourteen teachers and pupils hiked to Glen Canyon falls taking supper there.

A social hour was observed on Saturday night at the administration building with music and games.

BREVARD CHURCH DIRECTORY:

BAPTIST CHURCH:

Rev. C. E. Puett, Pastor; Preaching every Sunday at 11:00 A. M., and 7:30 P. M.; Sunday School, 9:45 A. M.; D. F. Moore, Supt.; Prayer meeting every Wednesday night. All welcome.

EPISCOPAL CHURCH:

Rev. John C. Seagle, Pastor; Services on Sunday at 11:00 A. M., and 5:00 P. M.; Sunday School 10:00 A. M.; Service on Friday at 5:00 P. M. The Public Cordially Invited.

PRESBYTERIAN CHURCH

Rev. John R. Hay, Pastor; Preaching at 11:00 A. M. every Sunday; Sunday School at 10:00 A. M.; E. W. Blythe, Supt.; Song Service Wednesday Evenings.

METHODIST CHURCH:

Rev. A. S. Raper, Pastor. Preaching every Sunday at 11:00 A. M., and 7:00 P. M.; Sunday School 9:45 A. M.; Welch Galloway, Supt. Prayer Meeting every Wednesday Night. Everyone welcome at all these services.

WE ARE STILL IN BUSINESS

If you want first class

PLUMBING

call on us. We do all kinds of Tinning and Sheet Metal work.

Stove Repairing

a specialty. If you want Roof Saddles we have them always on hand. We have two second hand Pumps, good as new, at a bargain.

Thanking you for your favors through the past year, we will be pleased to serve you at any time.

NICHOLSON & BUGLOS

Main Street Brevard, N. C. Next to Bishop's Old Stand

NOTICE OF LAND SALE BY COMMISSIONER:

By virtue of the power, direction and authority given to the undersigned commissioner appointed as such by the Court in a special proceeding pending in the Superior Court of Transylvania County before the Clerk entitled: "Julia Owen et al. vs. Lucius M. Owen et al." I will sell to the highest bidder, on the terms hereinafter set out at public auction at the Court House Door in the town of Brevard, N. C., on Monday, March 14th, 1921, at 12 o'clock M., all the following described real estate situate in Gloucester township, Transylvania county, N. C., on west fork of French Broad River, known as the M. L. Owen lands, bounded and described as follows:

FIRST TRACT: Beginning on a hickory (now down) on the South bank of West Fork of French Broad river at the mouth of a branch, place marked by pointers; and runs N. 10 degrees E. 18 poles to a small hickory (now down) place marked by pointers; then South 72 degrees E. 70 poles to a white oak; then N. 73 degrees E. 36 poles to a post oak; then S. 74 degrees E. 10 poles more or less to a spanish oak; then S. 43 - 1-2 degrees E. 15 poles to a stake on the bank of an Old Road, the line of a 50 acre tract owned by S. R. Owen; then with said Old Road, a north west course, and with the S. R. Owen 50 acre tract, 50 poles

more or less, to the corner of said 50 acre tract, where line of same leaves the said Old Road; then S. 4 degrees W. with the line of said 50 acre tract 6 poles to a stake; then S. 25 degrees W. 31 poles to a stake on the North bank of the public road; then S. 6 degrees E. 16-1-3 poles, crossing the river, to a willow on the south bank of said river; then southward, 50 poles, more or less, to a stake, a corner of State Grant N. 105 to Jesse Owen then with the line of said Grant, S. 2 degrees West, 44 poles to a stake; then N. 88 degrees W. 146 poles to a stake; the south west corner of said State Grant; then N. 2 degrees E. 90 poles to a maple; then N. 20 degrees W. 40 poles to a white oak; then N. 36 degrees E. 29 poles to the beginning.

There is excepted and not included in said boundary a small tract of 2-1-4 acres, now owned by Clyde McCall, which is not to be sold.

SECOND TRACT: Beginning on a small hickory (now down) with pointers standing about 18 poles north of the West Fork of French Broad river, and runs then S. 12 degrees W. 22 poles, crossing the river, to a stake on the South bank of said river; then west 2 poles to a stake in the John Owen line; then with that line, N. 2 degrees E. 55 poles to a stake in the Galloway (now S. M. Fisher's) line; then S. 87 degrees E. 139 poles to a chestnut, the Galloway-Fisher corner; then N. 2 degrees E. 72 poles to a spanish oak; then S. 36 degrees E. 44 poles to a sourwood then S. 86 degrees E. 80 poles to a stake in the T. P. Moses line; then S. 43 - 1-2 degrees E. 48 poles to a stake in the Marion Owen line; then N. 86 degrees W. with H. P. Hall line, 106 poles to a stake, a corner of a One acre tract, conveyed by Marion Owen to M. L. Owen; then with the line of said One Acre tract, S. 10 poles to a stake on the bank of the Old Road; then west with the line of said one acre N. tract 14 fols to a stake in the H. P. Hall line; then N. 43-1-2 W. 15 poles to a spanish oak; then with the line of Grant No. 92, 80 degrees W. 58 poles to a post oak; then S. 73 degrees W. 36 poles to a white oak; then N. 72 degrees W. 70 poles to the beginning.

Terms of sale - One half cash on day of sale. One half in one year, from date of sale, deferred payment to be represented by note drawing six per cent interest. Purchaser allowed to pay all cash at any time and take title, or secure the note and take title.

February 5th, 1921. WELCH GALLOWAY, Commis.

NOTICE LAND SALE BY TRUSTEE

By virtue of the power and authority conferred upon the undersigned trustee in a certain deed in trust, executed by William Blythe and wife, Mary Blythe, to The Brevard Banking Company to secure a note of \$150.00; and whereas said note is past due and not paid; and the holder of said note having demanded that the required notice to pay said note be given; and the required notice having been given, and the makers of said note not having made the default good:

Now therefore, the undersigned trustee will sell to the highest bidder for cash at the Court House Door in the town of Brevard, N. C., on Monday, March 22nd, 1921, at 12 o'clock M. all that certain lot or parcel of land situate in Brevard township, Transylvania County, N.C., and bounded as follows:

Beginning on a stake on the South margin of a 20 foot street, corner of Lots Nos. 40 and 41 of the R. L. Gash land, as subdivided, and runs with South margin of said street, N. 53-1-2 degrees W. 100 feet to a stake, corner of Lots Nos. 42 and 43; then S. 36 - 1-2 degrees W. 93 feet to a stake, corner of lots Nos. 42 and 43; then S. 48 degrees E. 100 feet to a stake, corner of Lots Nos. 40 and 41; then N. 36 - 1-2 E. 104 feet to beginning. Being all of Lots Nos. 41 and 42 of the R. L. Gash subdivision as shown on plat registered in Deed Book No. 33 at page 31 of Deed Records of Transylvania County.

Sale made to satisfy said note, principal, interest, cost and expenses of sale, Feb. 16, 1921. Welch Galloway, Trustee.

An advertisement in the News will sell that surplus cow or horse for you.