

### BREVARD INSTITUTE NOTES

Prof. Trowbridge returned Monday night from Monroe, where he was attending the W. N. C. Conference, convened there last week.

The various Sunday School classes were entertained by their teachers on Saturday night, each group enjoying a different sort of entertainment, and meeting at different places. These affairs are very popular.

Miss Baber had recently as weekend guests, Misses Vera and Lillian Martin, Ralph and Leon Walker and Miss Georgia Burton of G. W. C.

Miss Edith Sherrill, a former music teacher of Brevard Institute, and the Misses Dorothy and Kathleen Erwin, of Newton, were recent visitors here.

#### ROSMAN ITEMS

J. W. Glazener spent a few days last week in Atlanta, Ga., attending the fair.

Mrs. Hise, after spending a few days here with relatives, returned Monday to her home at East La Port, N. C.

Mr. A. P. Bell, who has been teaching school at Wilet, N. C., has been here for some time with his sick baby, which is now better.

Miss Arthia Fisher returned Saturday from a three months' visit to Atlanta, Ga.

Some of the citizens of Rosman were in Sylva, N. C., Monday, attending court there.

Mr. Otto Whitmire is in Atlanta going to school. He will be there three years and we hope him much success.

Mack Powell has recently bought a tract of land near Johnnie Whitmire and will soon erect a nice home on it.

Ernest Paxton is confined to his bed, and has been for weeks, with rheumatism. We hope that his recovery will be speedy.

After spending a number of years here, Floyd White and family have moved back to their old home state, Pennsylvania.

The farmers report that crops are short this year on account of the long dry weather. French Broad river is lower than it has been since 1908.

The small tomato plant that came up in Mr. Mahonna's garden last Spring has been carefully cared for and watched to see how large it would grow during the summer and fall. The small plant grew until it has become a giant of all tomatoes

plants. The measurement around this great giant is 82 feet. There have been gathered from the plant over three bushels of fruit and will be that much more to gather. Never has there been any thing seen like this plant in this country.  
E. D. RANDOLPH

#### NOTICE—LAND SALE BY COMMISSIONER

By virtue of the power conferred on the undersigned, appointed a commissioner of the court to sell the hereinafter described lands, as set out and described in a special proceeding pending in the Superior Court of Transylvania county entitled C. B. Tinsley et al. vs. Elzie Tinsley et al. I will sell to the highest bidder for cash at the Court House door in the town of Brevard, N. C., on Saturday, November 7, 1922, at 12 o'clock M. all the following described lands and prmiss formerly belonging to I. C. Tinsley and A. R. Tinsley, both deceased:

**FIRST TRACT.** Beginning on a stake in the center of King's creek at the ford where the road leading from Whitmire Street to Mount Surprise crosses same, and runs with the old King-Cooper line 3 deg. west 190 feet to a stake; then south 70 1-2 deg. east 254 feet to a stake on the bank of the mill race; then down and with the bank of said mill race the following courses and distances: south 33 1-2 deg. east 80 feet; south 70 deg. east 100 feet; north 77 deg. east 100 feet; south 63 deg. east 100 feet; south 56 deg. east 40 feet; south 82 1-2 deg. east 115 feet to a stake at the south west corner of the T. H. Shipman lot; then with the Shipman line, north 36 deg. east 270 feet to a stake in the center of King's Creek; then up and with the center of said creek to the beginning. Containing three acres, more or less.

**SECOND LOT.** Beginning on a stake on the north margin of Whitmire street at the corner of the Cooper lot, and runs with the Cooper line, north 11 1-2 deg. east 235 feet to a stake on the south bank of the Breese mill race; then down and with the south bank of said mill race, the following courses and distances: South 70 deg. east 77 feet; north 18 deg. east 80 feet; south 71 deg. east 28 feet to a stake at the Ashworth corner; then with the Ashworth line south 16 1-3 deg. west 280 feet to a stake on the north margin of Whitmire street; then with said margin of said street, north 73 2-3 deg. west 143 feet to the beginning, containing ONE ACRE, more or less, and known as the Egerton place.

These two parcels of land adjoin and are valuable. The first lot has a four room house on it and the second lot has a large, well arranged dwelling on it and all conveniences, garden, orchard and other necessaries.

This October 14, 1922.  
W. L. AIKEN, Commissioner  
Nov. 17.—W. G.

### CITY PRESSING CLUB

J. E. WATERS, Prop.  
Phone 94



Cleaning  
Pressing  
Dyeing

All work turned out promptly.  
Main Street Brevard

THE NEWS IS ONLY \$1.50 YEAR.

#### NOTICE OF PUBLICATION OF SUMMONS

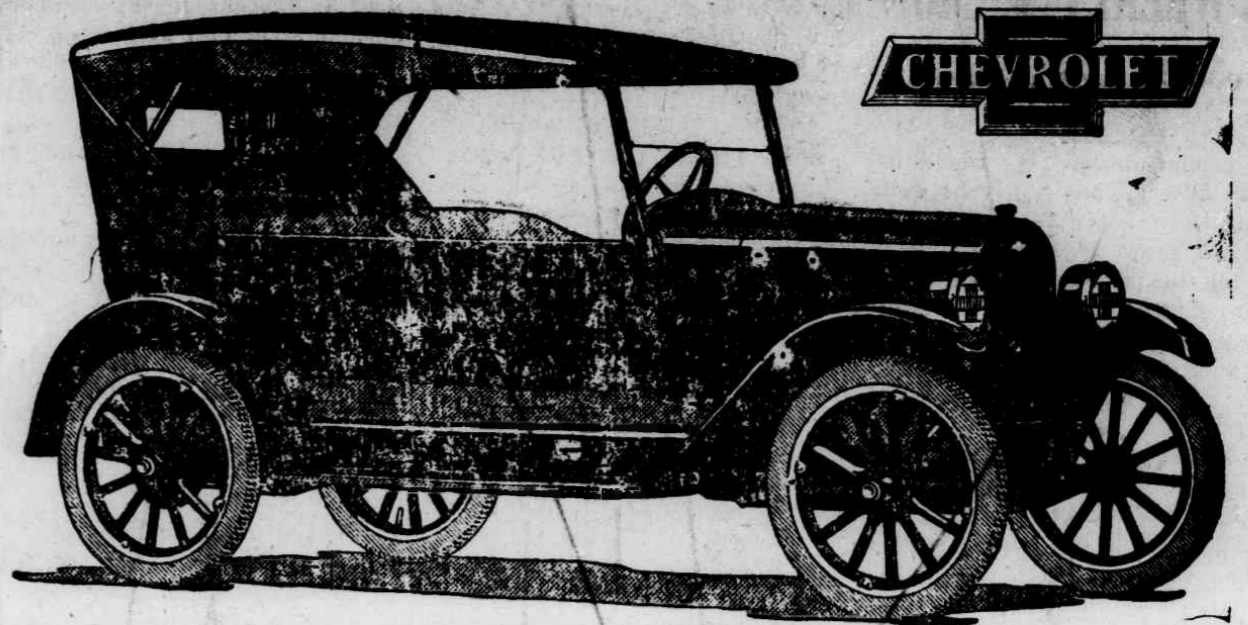
North Carolina  
Transylvania county  
In the Superior Court  
Before the clrk  
Mollie Aiken, Addie Ryan and Allen of J. E. Duckworth deceased

vs.  
Sallie McCarrell et al.

The defendants, Joe Duckworth, Mollie Aiken, Addie Ryan and Allen Ryan, named in above entitled special proceeding, will each take notice that a special proceeding entitled as above has been commenced in the Superior Court of Transylvania county before the clerk of said court for the purpose of selling certain lands belonging to the estate of J. E. Duckworth, deceased, in order to make additional assets with which to pay the remaining unpaid obligations of said estate; and the said defendants and each of them will further take notice that they are required to appear at the office of the clerk of the superior court of Transylvania county, N. C., on Saturday, October 28, 1922, at 10 o'clock A. M. and then answer or demur to the complaint or petition of the plaintiff which will be filed within the time required by law, or the relief demanded in said complaint will be granted.

This September 27, 1922.  
N. A. MILLER  
Clerk Superior Court  
Transylvania County, N. C.  
4tc.-Oct. 6-27.

for Economical Transportation



## Announcing 1923 SUPERIOR Models

Again Chevrolet Motor Company has emphasized its admitted leadership as producer of the World's Lowest Priced Quality Automobiles.

The 1923 SUPERIOR models—one of which is here illustrated—represent the most sensational values in modern, economical transportation ever established.

QUALITY has been still further improved by more artistic design and added equipment.

ECONOMY has been still further increased by engineering refinements and added facilities.

SERVICE is now offered on a flat rate basis by 10,000 dealers and service stations.

PRICES remain the same in spite of added equipment and more expensive construction, which have greatly increased value.

#### Some Distinctive Features

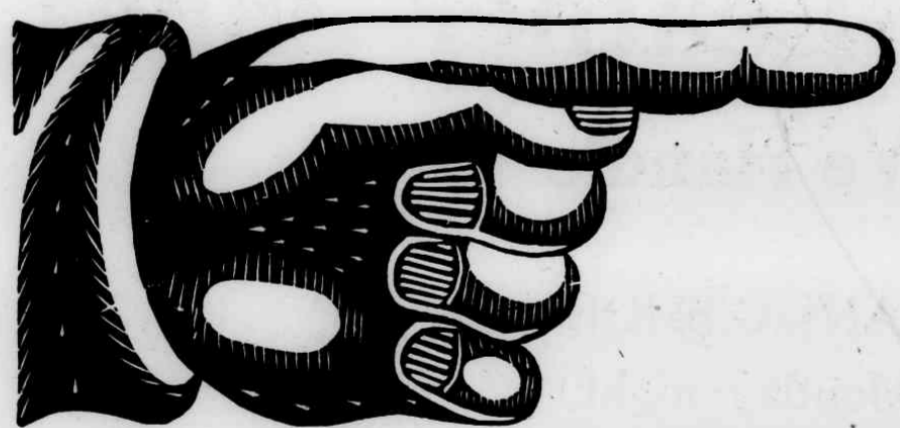
Streamline body design with high hood; vacuum feed and rear gasoline tank on all models; drum type head lamps with legal lenses. Curtains open with doors of open models. Closed models have plate glass Ternstedt regulated windows, straight side cord tires, sun visor, windshield wiper and dash light. The Sedanette is equipped with auto trunk on rear.

#### Prices f. o. b. Flint, Mich.

Five Passenger Touring	\$525
Two Passenger Roadster	510
Five Passenger Sedan	860
Four Passenger Sedanette	850
Two Passenger Utility Coupé	680

See these remarkable cars. Study the specifications  
*Nothing Compares With Chevrolet*

A. M. WHITE, Distributor, Rosman, N. C.



# FORD

## BIG—PRICE—REDUCTION OF

FOLLOWING TABLE SHOWS PRICES OF FORD CARS EACH YEAR SINCE 1909:

	Aug. 1909	Aug. 1910	Aug. 1911	Aug. 1912	Aug. 1913	Aug. 1914	Aug. 1915	Aug. 1916	Aug. 1917	Aug. 1918	Aug. 1919	Mar. 1920	Aug. 1920	Sept. 1920	Jan. 1921	Sept. 1921	Jan. 1922	Today:
Touring ...	\$850	\$950	\$700	\$690	\$600	\$490	\$440	\$360	\$360	\$525	\$525	\$575	\$575	\$440	\$415	\$355	\$348	\$298
Runabout ..	825	900	680	590	525	440	390	345	345	500	500	550	550	395	370	325	319	\$269
Chasis ...							360	325	325	475	475	525	525	360	345	295	285	\$235
Sedan .....						975	740	645	645	775	775	975	975	795	760	660	645	\$595
Coupe .....	950	1050	1050			750	590	505	505	650	650	850	850	745	695	595	580	\$530
Ton Truck ..								600		550	550	600	640	545	495	445	430	\$380

The Tour, Runabout Chasis and Ton Truck listed without Self-Starter \$70.00 extra.  
The Tour, Runabout and Chasis listed without Demountable Rims \$25.00 extra.  
The Sedan and Coupe have Self-Starters and Demountable Rims at the above price.

# \$50

On All Present Models

## Brevard Auto Company