

County of Brevard
and Transylvania
County.

Brevard News

The Aim Is Frank-
ness and Sincerity.
Independent.

FOR THE CAUSE THAT LACKS ASSISTANCE, AGAINST THE WRONGS THAT NEED RESISTANCE, FOR THE FUTURE IN THE DISTANCE AND THE GOOD THAT WE CAN DO

VOLUME XXVIII



BREVARD--County Seat of Transylvania County

SERVES AS ENTRANCE TO WONDERFUL SAPPHIRE COUNTY

Center of Great National Playground and Rendezvous for Summer Camps, Alive to Commercial, Religious Educational and Fraternal Interests to Promote Thriving City.

At the entrance to the wonderful Sapphire County, high upon the plateau between the Blue Ridge and the Mighty Balsam Mountains stands the beautiful town of Brevard, unusually well fitted to play a double role as a center of industry, upon the one hand, and a summer and winter resort for excellence upon the other.

It lies in a land of majestic forests, gliding streams, towering peaks and fertile valleys, at once a delight to the eye of a tourist, a source of pride to the landowner, and a vast reservoir of stored-up wealth for the many industries located throughout the section.

Hotels of ample accommodations and modern equipment are found in large numbers, inviting the visitors to rest and enjoy the beauties of nature in a climate admirably adapted to work and play. At the gateway of the Pisgah National Forest, Brevard occupies a site of particular advantage as a playground, reached by railroad facilities upon the South side and by excellent highway from Asheville either by Hendersonville or by a shorter route through the Davidson River country. The distance from Asheville is 43 miles, and from Hendersonville, half that number.

Brevard is not far from the Lake Toxaway site and the restoration of that summer resort is looked upon as a project of value to the entire community.

Brevard Surrounded by Rich Resources

Surrounding the town whose broad paved streets are in themselves an indication of wise planning for future growth, are fertile fields, sections of modern, attractive homes and beyond, industrial plants whose value totals into the millions and whose annual payrolls put hundreds of thousands of dollars into circulation in the community.

Brevard is the county seat of Transylvania county. Standing in a central location in the town is an ornate court house that has recently been remodeled upon the interior at a cost of \$50,000 which includes large courtroom, steam heated, finished in oak, rooms for all officials including a home demonstration agents department and one for the farm demonstration department. Just at the rear of the new \$80,000 jail, steam heat and electric lights serving the plant that holds fifty forced visitors.

Just as the citizens of Brevard have put into practice the paved street policy, so the citizens of the county have joined with them in policy of highway building that bids fair to rival the most progressive in the state.

Under the direction of the State highway Commission there has just been completed a highway with waterbound Macadam surface from the Henderson county line to the Jackson county boundary, with a branch extending from this road at Rosman to the Pickens County, South Carolina line, where connection is had with the highway being built to that point by the South Carolina Commission.

BIG WHEAT FIELDS IN THE TILT VALLEY



Extensive improvement upon the highway from Brevard to Greenville, S. C., via Caesar's Head, the famous scenic Phenomenon, are being carried out, the distance to the South Carolina line being sixty miles.

Unsurpassed Building Boom

Building industry at Brevard is knowing a steady growth indication of a healthy municipal expansion. Many new projects are under way. Most of these were mentioned in another article.

Triple Capacity of Power Plant

Power and lights are promised Brevard and vicinity by the Cascade Light & Power Company, headed by the Pickelsimer Brothers. The new equipment recently added have tripled the capacity of this power plant. There is ample power for all present industries and plenty for any new industries that may locate.

Water Supply

Brevard's water supply comes from a Municipally-owned water shed where an abundant supply of crystal clear water is available, and it is a source of pride to the entire community.

Industrial Plants

Among the industrial plants that help to make Brevard commercially a power is the Brevard Cotton Mills. The J. S. Broomfield combination plant which furnishes simple laundry facilities, produces five or six tons of ice daily as required. Some fifty employees serve this company that has been operating twelve or more years successfully.

The Brevard Manufacturing Company produces for the export trade mainly a supply of dogwood shuttles used in French weaving. The Orr-Sitton Lumber Company is another enterprise of which Transylvania is proud, and the Morris Lumber Company, operating in the Toxaway region, covers thousands of acres, originally purchased by the late J. F. Hayes. Among the leading hostleries way he mentioned the spacious tourist hotel, Franklin, the Hunt Cottages, the Wallace Home, the Norwood, Gallop House, Bryant House, Idlewide, Paxton, Clayton Hotel, D'Arlington, Appalachian, Aethelwald and others of the homelike cottage type.

The large Lumber and Tannery enterprises described in another column and controlled by Messrs. Louis Carr and J. S. Silverstein are the most important industries in the county, paying the most in taxes and having the greatest year-around payrolls.

These industries have had more to do with building up "The Land of Waterfalls" by developing the natural resources, etc., perhaps, than any other one thing. They are the greatest asset that this glorious county can boast of.

Camp Life

Summer Camp life in and around Brevard is a feature that draws upward of five thousand campers and their parents each season. Camp Sapphire, Camp French Broad and Camp Transylvania for boys are perhaps the most elaborate, although there are some dozen other camps of healthy proportion in the vicinity. The Rockbrook Camp, Camp Illahee and Keystone Camp for girls are the finest in America.

Sections Abounds in Virgin Playgrounds

In connection with the playground features of the section should be mentioned the Deer Lick Lake, covering approximately twenty-two acres some seven miles south of Brevard adjacent to the Pisgah National Forest reserve. The entire forest holdings covers one hundred and fourteen acres where hunting is said to be ideal.

Modern Hospital

Brevard and Transylvania county have a Model Hospital and Sanatorium located in the center of Brevard. Dr. Stokes, the proprietor, and his wife came to this section from Wichita, Kansas, and have become a prominent and indispensable part of the community life, a veritable god-send to the afflicted.

With them are several registered nurses who have become very popular to those in need of treatment. The hospital is thoroughly equipped for hydrotherapeutic treatment and surgical as well as Osteopathic methods are carried out. The citizens of Transylvania are indeed proud of their hospital and great is their praise at the generous sympathetic and charitable treatment accorded those afflicted by these Christian people. The Transylvania Medical Doctors are mostly all connected with Dr. Stokes's hospital.

Religious and Fraternal Organizations

There are a number of large modern churches and several of smaller capacity. The religious activities of the town are varied and indicate substantial growth in the things of higher values.

Fraternal life finds expression in strong masonic Order, also Modern Woodman, Junior order and Oddfellows.

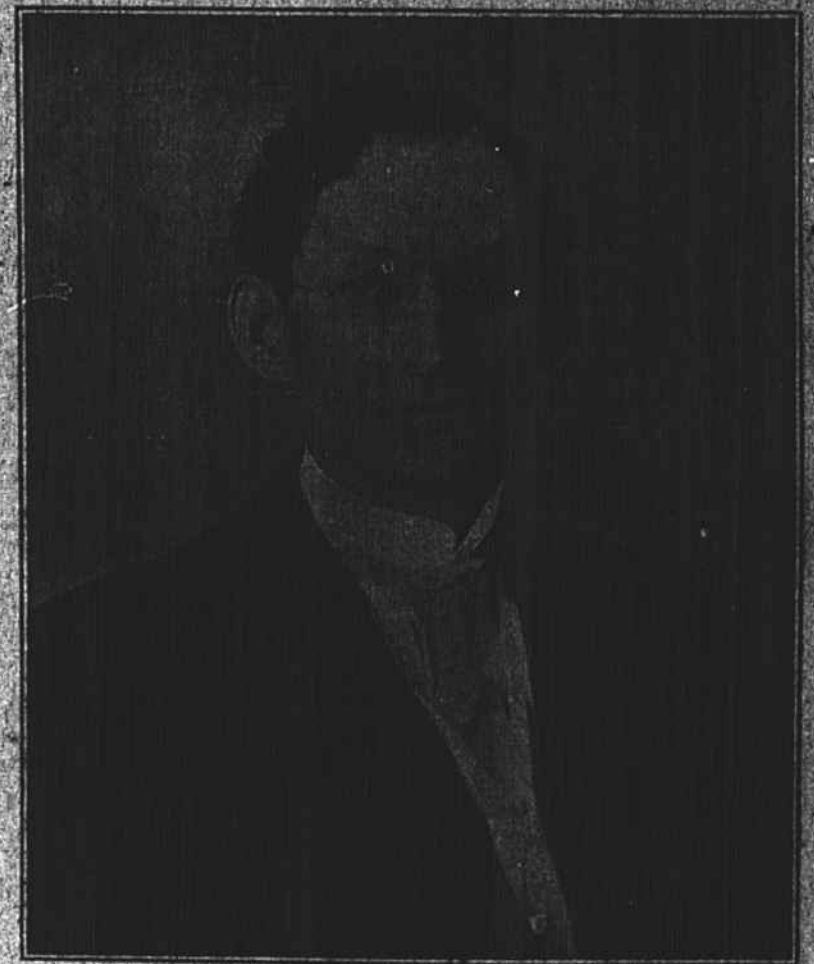
WONDERFUL CLIMATE.

"How is the weather there?"

This question, more than any other, perhaps, is asked by the prospective visitor before departing for a new resort.

Brevard and Transylvania County are favored climatically with snappy, invigorating weather in winter and summer that make outdoor activity a pleasure, with no danger of overheating. The warmth of the noonday in summer is soon dispelled when night comes, so that one sleeps comfortable under blankets as a rule.

The temperature ranges from 71 to 38 degrees, at the opposite seasons; the annual mean temperature, is given by official United States Weather Bureau records, being close to 55 degrees. Particularly worthy of note is the fact that the relative humidity—the amount of watery vapor in the atmosphere—is but 65 per cent. This assures comfort even on days of high temperature.



REV. E. R. WELCH

Rev. E. R. Welch only recently came to Brevard on Nov. 1, 1923, to take charge of the Brevard Methodist church.

Mr. Welch is a native of Red Springs, Robinson County, N. C. He is a graduate of Trinity College, and took the post graduate course at Oklahoma University.

In 1899 he joined the North Carolina Methodist Conference. He was transferred to West Oklahoma Conference in 1910. Was transferred to Western North Carolina Conference in 1918.

In 1921, Mr. Welch toured Syria, Palestine, Egypt and several countries in Europe, and in 1922, he edited and had published a two hundred page volume entitled "A Palestine Pilgrimage," which publication had a wide circulation.

Mr. Welch married Miss Lela King of Wilmington, N. C., in 1906, which union was blessed with one daughter, Miss Elizabeth, who is now in her sophomore year at the Greensboro College for Women.

Mr. and Mrs. Welch came to Brevard from the Chestnut Street Church of Asheville, N. C., where they enjoyed two years of a very successful ministry.

Since coming to Brevard they have made many friends and are greatly attached to "The Land of Waterfalls."

THE FRENCH BROAD RIVER

