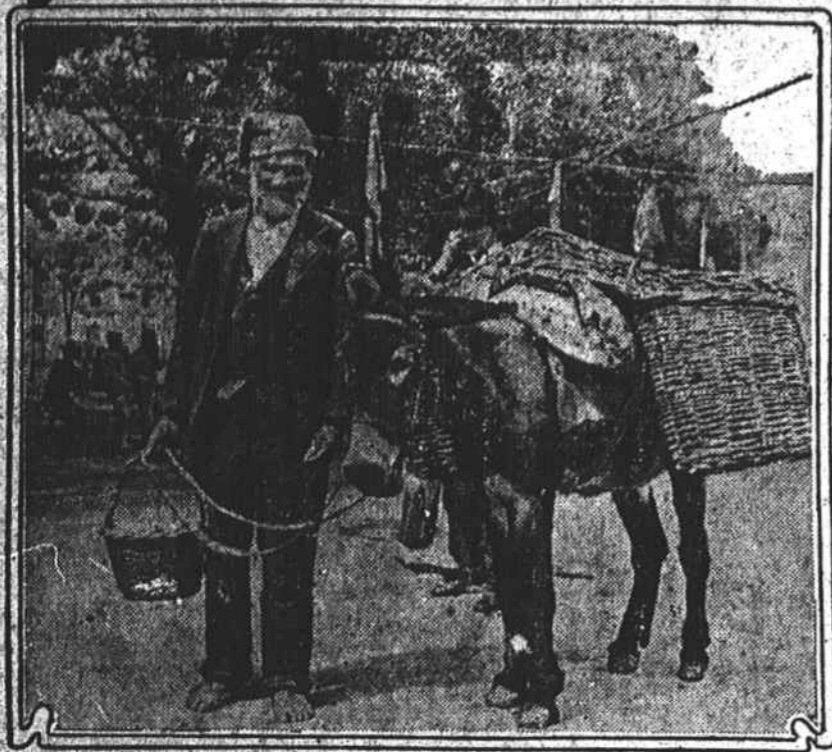


Half-Way House of the Atlantic



Fruit Vendor of the Azores.

Prepared by the National Geographic Society, Washington, D. C.

The Azores, historic half-way house of the Atlantic, come into their own as a traffic station in the winter when the Europe-bound stream of tourists runs to the Mediterranean countries rather than to northern Europe. Just as Columbus, plying between a port near the Straits of Gibraltar and America, passed among the Azores, so modern steamer lanes touch the islands; and the tourists refresh themselves by hasty visits to its picturesque towns and countryside as the really ocean-weary world explorers cheered and revived their spirits by setting foot once more on terra firma.

These quaint bits of land almost in mid-Atlantic are well worth more than the hasty, passing visit that most tourists give them. The central cluster of the group, formed by the islands of Fayal, Pico, Sao Jorge, Graciosa and Terceira, lies more than 840 miles directly west of Lisbon. About 150 miles northwest of this centrally located group are Flores and Corvo, and approximately the same distance to the southeast Santa Maria; and the largest and most important of all, St. Michaels (Sao Miguel).

The Azores are not, as is generally supposed, a colonial possession, but form an integral part of Portugal. For political and administrative purposes they are divided into three districts, each sending its representatives to the congress at Lisbon.

Owing to their location, the Azores have played a very important part in the history of sea navigation, and even in aerial navigation, for they were the half-way house in the epochal transatlantic flight by American naval officers in the seaplane NC-4.

The keen interest that the Azoreans manifested in the first transatlantic flight had a deeper cause than mere curiosity. They remember that the first sailing vessel that crossed the Atlantic, over four hundred years ago, landed at one of their islands. They were the first to receive from Columbus the news of the discovery of a new world, and they hailed with delight the opportunity to welcome to their shores the first man to win the title of "Columbus of the Air."

Discovered by Cabral. The discovery of Madeira, the Canaries and the Azores islands was a direct result of the persistent efforts of Prince Henry the navigator, of Portugal, to double Cape Bojador and to discover a new route to India. It was during the glorious period of Portuguese explorations that Goncalo Velho Cabral discovered Santa Maria, the most southerly of the Azores, in 1482. In the course of succeeding years, covering a period of more than a decade, the other islands were discovered.

From that time on down to modern days the Azores, or Western Islands, became the scene of many an historic event.

Frequent earthquakes have disturbed the Azores during the centuries, since their discovery down to the Eighteenth. The annals of the islands vie with those of Italy in graphic accounts of the ever-interesting and terrible volcanic phenomena. Cities were buried, mountains disappeared and sent their ashes to unbelievable distances; islands hundreds of feet high suddenly appeared and as suddenly disappeared, and flames of fire illuminated whole islands and their intervening waters.

There is perhaps no country in the world that has such a heavy tide of emigration, in proportion to the number of its inhabitants, as the Western Islands. Some of the emigrants go to Brazil, but by far the majority to the United States. During the year before the World War, 6,000 Azoreans emigrated to the United States, and it is estimated that there are 35,000 Azoreans in California and over 60,000 in New Bedford, Mass., Providence, R. I., and other parts of New England, making a total of almost 100,000. The population of all the Azores is scarcely 300,000. Many of the emigrants return home, and almost all of the inhabitants of some of the islands have been in the United States.

The island of St. Michaels does not overwhelm you with the grandeur of a Rocky mountain scene. It captures you subtly. Little by little impressions pile up in your memory until your fancy lingers in the beautiful gardens, whose walls are covered with wisteria and climbing roses, in the magnificent parks, and among the extensive hedges of hydrangeas that bloom along the country roads.

By way of contrast, St. Michaels will fret and frown amid fearful, stormy seas. But you are compensated when, on a sunny day, you stand on the summit of one of the many peaks and behold the tranquil scene below you. Then you will see the island studded with towns and villages, the verdant hills laid out in checkerboard fields and cultivated to the very tops, picturesque dome-like windmills turning their long wings, and the harbor and surrounding ocean dotted with gulls that glisten in the bright sunshine.

Ponta Delgada, the largest city in the Azores, has 17,600 inhabitants. Fortunately, it has preserved some of its old features, the inheritance of the past centuries—just enough to breathe an atmosphere of quaintness and to make the place so delightfully attractive that the jumble of high, massive chimneys, the tall walls, and the small balconies that overhang the streets become a part of one's life.

Modern buildings there are, such as the imposing hospital, the quarantine station, the governor's palace, and many private residences. But it is not these one cares to talk about in a place that can boast interesting relics of the past.

Fine Botanical Gardens. Ponta Delgada still has a number of houses that have been handed down through generations in accordance with the law of the morgados. The morgado was the oldest son, who inherited the estate of his father and upon whom devolved the duty of providing for the other members of the family. The architecture of these houses is the same as that used in older times by the morgados of northern Portugal. Here they are built of massive lava rock. Many of the gardens have high stone towers that command a view of the sea and surrounding country.

Ponta Delgada has wonderful botanical gardens. They have been pronounced by some as ranking next to those in Portugal, and by others as inferior only to the famous gardens of Brazil. That of Jose do Canto was begun in 1848. Senor Canto was connected with all the different nurseries in the world, and it was his ambition to gather specimens of all the trees and plants that could be obtained. The result is a marvelous collection.

The gardens contain tree ferns originally from Australia, many species of palms (such as the date, sago, and fan), Australian myrtle, great varieties of aloes, magnificent roses and camelias, India-rubber trees, banyan trees, acacias, magnolias, dracenas, brilliant red-flame trees, screw-pines, and fine specimens of the cedar of Lebanon.

Formerly, oranges were the principal article of export, and in 1872, 300,000 boxes were shipped abroad, representing a value of about \$500,000. From that time on the orange industry declined, as a result of tree blight.

St. Michaels is a little world in itself, and the Azoreans have a little of everything. They raise their own wine and ten and have their own mineral water and thermal baths; they have their own tobacco and manufacture their own cigars; they cultivate large quantities of sugar-beet and manufacture their own sugar. The rich volcanic earth and humid, but healthful, climate lend themselves to the cultivation of great varieties of agricultural products, including vegetables and fruits of the temperate and tropical zones. Twenty-one thousand head of cattle graze in the hills and help to form one of the principal industries of the islands, the manufacture of cheese. The sea furnishes a livelihood for a large number of its inhabitants, and thousands of lobsters are exported to the continent.

CANDIDATES

FOR SOLICITOR.
I hereby announce myself a candidate for solicitor of the Eighteenth Judicial District subject to the action of the Democratic Primary to be held on June 7th.
GUDGER W. EDWARD.

FOR REGISTER OF DEEDS:
Subject to the Democratic Primary, I announce myself a candidate for Register of Deeds of Transylvania County.
COLE I. LEE,
Lake Toxaway N. C.

ERNEST PAXTON FOR SHERIFF.
I hereby announce myself a candidate for Sheriff and Tax-collector of Transylvania County subject to the action of the Democratic Primary on June 7, 1924.
ERNEST PATON, Rosman

FOR SHERIFF:
Having been solicited by many friends for some time to become a candidate for sheriff and tax-collector for Transylvania County, and having considered and re-considered the matter from various standpoints, I hereby announce myself a candidate for the office subject to the wishes of the people in the Democratic Primary of June 7th, 1924. I realize that the people of this County have given me splendid support in the past for many places of trust and confidence, and I would be ungrateful if I did not recognize this undeserved support. I have tried to fill these places to which I have been elevated in the interest of all the people and to the best of my skill and ability.

If nominated and elected I promise the people of the county my best service and to make them a faithful and efficient officer. If the people of the County want me I want to assure them that their support will be appreciated, and "with malice toward none" but with good will to all, I am yours respectfully.
W. M. HENRY.

FOR REPRESENTATIVE
The name of T. H. Galloway is presented to the Democratic voters of Transylvania County for Representative subject to the Democratic Primary of June, 1924 — Friends.

FOR REGISTER OF DEEDS:
I hereby announce myself as a candidate for Register of Deeds of Transylvania County subject to the action of the Democratic Primary.
NOAH C. MILLER.

FOR SHERIFF:
Friends wish to announce the candidacy of Ed. Gillespie for Sheriff and tax-collector of Transylvania County; subject to the action of the Democratic Primary this coming June, 1924.

FOR SHERIFF TRANSYLVANIA COUNTY
At the request of many friends, I wish to announce myself as a candidate for sheriff of Transylvania County—subject to the Democratic primaries.
LOUIE GALLOWAY,
Balsam Grove, N. C.

Just received one car Fertilizer, Union Sets, Seed Corn, Seed Beans, Peas, Seed Potatoes, Maine and home grown, Grass Seeds. In fact all kinds garden and field seeds. Just a little cheaper that's all. We want Cash Seed Hendersonville Seed Company, Hendersonville, N. C. 2tpd.

World's Wonder, everlasting straw berry Wonder, penny each. Supply limited. I bought at \$5.00 per hundred last year. J. C. Maxwell, Brevard, N. C., 1 tpd.

OR SALE — Eggs for setting — Shepard Strain Ancona. \$2.00 per setting of 15. J. F. Zachary.

Time to Plant

and the best varieties of vegetables and field seeds to plant for each purpose is told in the

1924 Catalog of WOOD'S SEEDS

A copy will be mailed you free on request. Reduced prices are quoted on Seeds, Poultry Supplies and Feeds, Fertilizer, Garden Tools and Spray Materials.

Free Flower Seeds and how you may get them is told on Page 3 of Catalog. Write for your copy. Ask for a Select-Rite Seed Chart.

T. W. WOOD & SONS
Seedsman Since 1878
40 S. 14th St., Richmond, Va.



Son Says-

"To feel keen one must feel clean—mentally, morally and physically. And physical cleanliness influences both the other forms." A freshly shaven face each morning, topped by an exhilarating bath, seems to stimulate as no other morning function can. That is why

Shaving Is Important

And the shaving materials and other toilet accessories for men are no less important than their actual use. We can supply the particular men and young men with soaps, shaving creams, massage creams, ointments, talcum powder, dental cream, etc. Brushes for all purposes are here in a wide range of prices. Safety razor blades, hones, strops and many other associated articles can be secured here at a gain in convenience and often a saving in price.

for **MEN'S TOILET NEEDS**
Davis-Walker Drug Co.,
Telephone 85 Brevard, N. C.

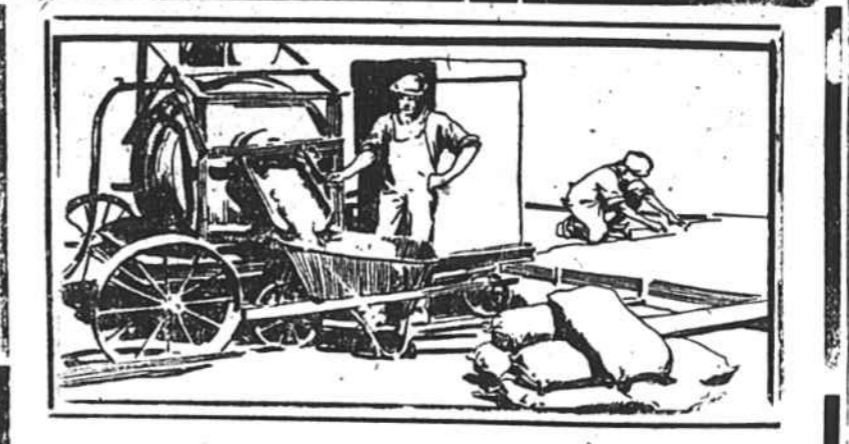
What Shall I Get for Dinner?

How many times have you asked yourself this question? Day after day, week after week, it is a problem that is constantly confronting you.

If you were to stock your shelves with a good assortment of canned goods, you would always have something on hand that your folks would like.

Canned meats—canned vegetables—canned fruits—we have them all in the best known brands and at prices that will please you. Place your order at once.

Telephone Orders Given Prompt Attention
T. M. MITCHELL
Caldwell Street Brevard, N. C.



The Way We Do It
When we handle your Cement work, it is certain to turn out right, for we use the latest and most approved method of mixing and construction. That it is economy to have us do your work, our prices prove.

MILLER SUPPLY CO.
At The Depot Brevard, N. C.

NOTICE — RESALE OF LAND:

Whereas, at a sale of that part of the J. E. Duckworth Farm at Cherryfield, on Monday March 3rd 1924, which lies east of Mason's Creek and below the State Highway the bid that was made for that section on said day has been raised; and whereas the order of the Court is that said section of said farm be re-advertised and sold:

Now therefore, the undersigned, commissioner will offer that part of said farm described as below; at public auction at the Court House Door in the town of Brevard, N. C., held, on Saturday, March 29th, 1924 at 2 o'clock P. M.

Terms of sale: cash.

Land described as follows: Beginning on a black gum just East of the State Highway, L. W. Brooks' corner, and runs West about 25 poles to a stake on the east margin of said State Highway; then with the east margin of said State Highway in a general South-westerly direction to a stake in the centre of Mason's Creek; then down and with the centre of Mason's Creek to Cherryfield creek and with the centre of Cherryfield creek to a stake in the Old Paxton line near and just west of Railroad; then with the Paxton line to strike in the centre line of the Railroad; then with the Railroad, N. 12 deg. E. 85 poles to a stake at M. C. Whitmire's corner; then with Whitmire's line west 43 poles to a stake in Brook's line; then with L. W. Brooks line N. 106 poles to the beginning containing 40 acres.

Such rights of way as Railroad has along its line is reserved, and also right for plot around graves located on the tract, with right to and from the Highway to said graves, for removal or upkeep.

WELCH GALLOWAY, Commissioner. March 13th, 1924.

ANNOUNCEMENT

We are authorized to announce Ed. Sims as a candidate for Sheriff subject to the action of the Democratic primaries.

TO THE PUBLIC

The "ROSS LITERARY SOCIETY" Presents a Play, "MISS FEARLESS AND CO." at the **BREVARD INSTITUTE** Saturday Evening, March 22, 1924. At 8:00 O'Clock. Following the play will be a Radio concert. — Admission 25c and 35c.

NOTICE — ELECTION FOR INCREASE OF SPECIAL SCHOOL TAX:

To the voters of District No. 3, Athens Creek Township which likewise includes a portion of Esstatoe township.

Whereas, a petition has been filed with the Board of County Commissioners asking that the question of increase of tax rate of ten cents additional to the present tax in District No. 3, Athens Creek to supplement the funds for six months public school term, which petition has been approved by the Board of Education of Transylvania County;

Now, therefore, this is to notify the persons within said school District that a question has been ordered by the Board of County Commissioners of Transylvania County, N. C., to be held at the regular polling place in the town of Rosman on April 22, 1924.

A. M. Paxton has been appointed Register, and W. Glazner and A. M. White, as judges of said election. The Registration Books will be opened on Saturday, March 22, 1924, and will be kept open until including April 12th, 1924, as provided for in General Elections. All persons who expect to vote in said election for or against the proposition are required to register their names on the Books in this special election.

This March 4th, 1924.
ROLAND OWEN, Ex-Officio, clerk of Board of County Commissioners, Transylvania County, N. C. March 21 — c.

Phone Us for Printing on HAMMERMILL BOND PRINTING

Our plant is complete for everything you need in the line of printing and we can assure you first grade work on Hammermill stock. Ask us.