

Brevard Building & Loan Association

Financial Statement January 1st, 1925.

Assets	
Cash	- \$ 1,933.68
Loans	- - 141,270.00
Furniture and Fixtures	- - 424.52
	\$ 143,628.20

Liabilities	
Instalment Stock	- - \$ 59,464.59
Prepaid Stock	- - 75,389.25
Matured Stock	- - 104.00
Balance on Incomplete Loans	- 207.00
Notes Payable	- - 1,000.00
Profits	- - 7,463.36
	\$ 143,628.20

NEW SERIES OPENS MARCH 1st.

A Parisian Style



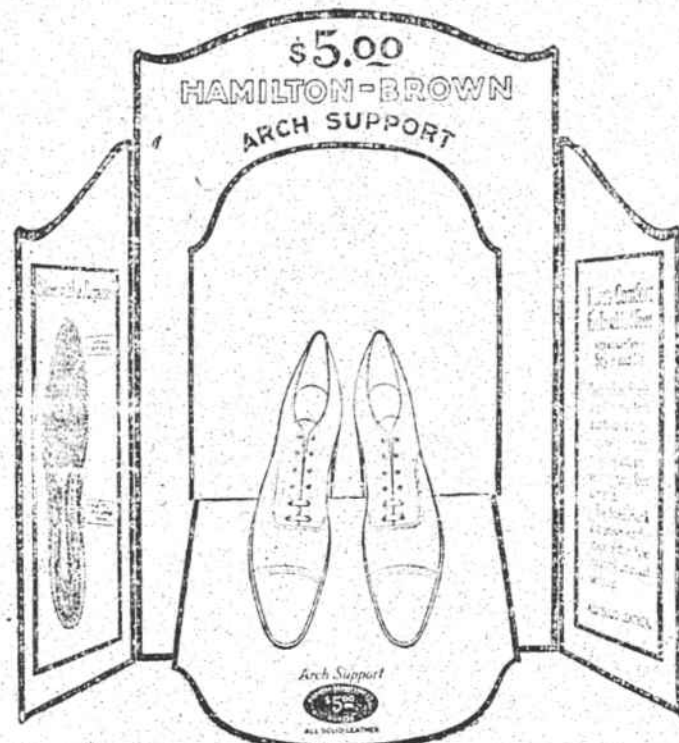
American Lady, Patent Leather Eyelet Tie, Apricot Kid Quarter, Flexible Single Sole,

\$7.85

Depend on Patterson's For the Latest in Wearing Apparel

See our display of New Silks and other materials in all the New Spring colorings. Other goods are arriving daily including Spring Dresses, Wraps and Millinery. Patterson's is Headquarters for everything nice.

Do You Want Shoe Comfort? Then try our Arch Support Oxfords or Slippers.



Black Kid

Brown Kid

Black Kid Straps

Prevent foot trouble by wearing Arch Support Shoes. See Our Line.

Hamilton Brown Arch Support Slippers \$5.00

Martha Washington Arch Support Slippers \$6.25

A Late Model



American Lady, Patent Leather Diagonal Strap, Apricot Trimmed, Flexible Soles,

\$7.15

DOVE Undergarments

Underwear of Quality.



Silk Hose in Newest Styles.

The GENUINE **Everfast**

Everfast Suiting and Everfast Gingham in the new shades. Come and see them. If any Everfast material fades you get your money back for material, dressmaking and trimming.

BREVARD'S ONLY QUALITY DEPARTMENT STORE

Patterson's

DEPARTMENT STORE

MAIN STREET BREVARD, N.C.

Phone 208

N. MORRIS, Mgr.

"Minerva Yarns,"
Shetland Floss,
Germantown,
Silk and Wool,
Saxony.

