



IN HOLIDAY MOOD---



This Store Abounds With Gift Suggestions



Come here shopping early and often. The values we offer will save you money—the gifts you select from our stock will prove most pleasing to the recipient and the convenience of shopping here will add to your pleasure of gift choosing.

Charming Indeed and Truly Acceptable Is a Gift of a Coat, Suit or Dress.

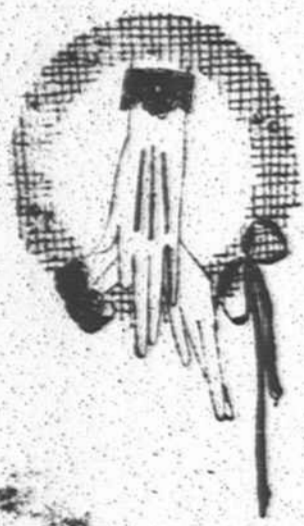
The splendid array of new modes, the excellence of the materials in the models shown and the wide range of prices quoted, combine to make this an ideal place to come to make your choice.

\$4.95 to \$89.50

Our Holiday Gifts are Now on Display Don't Fail to Visit Our Toy Department.

ARTAMO

Embroidery Packages
Make Excellent Gifts.

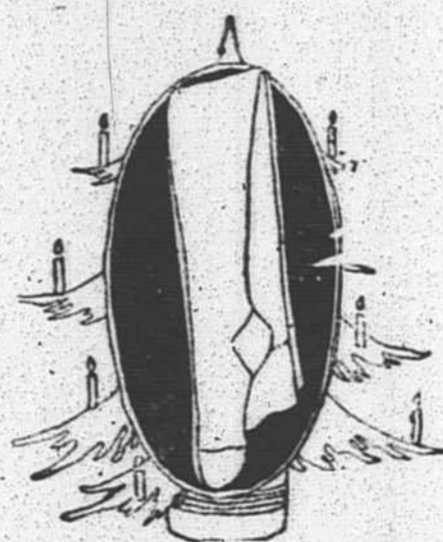


The Finer Gloves
of Newest
Fabric

A most complete array of the newest and finest Gloves especially assembled for gift shoppers. Make a special effort to see them—you will find the values interesting.

98c to \$2.75

Hosiery---
a Most
Thoughtful
Gift



Varied in color to match the new shades in winter apparel—of silk, wool or lisle to meet your wishes. It is a display that merits your attention.

49c to \$2.50

EAST FORK NEWS

(Too late for last week)
Moving seems to be the order of the day on East Fork at present. D. W. Mauldin is moving to his farm near Easley, S. C.; Clyde Jones is also moving to South Carolina, and Jule Reynolds is moving to Mr. Dood's farm he bought from H. E. Whitmire.

Mr. L. P. Wilson seems determined to get in the real estate business on East Fork. He has been here most every day lately.

Nearly all the land around here has been sold once, and lots of it twice, in less than a year.

It is rumored that there is going to be all kinds of work going on in our settlement soon. Lakes going to be made, houses builded, and maybe a hotel or two. We farmers and gardeners had better be thinking fast now, for those who do the work, as well as those who come on later, will need something to eat.

We are going to need a good road to East Fork too, and we believe one to Rosman first would be best. It would be a special benefit to our school, as our principal lives at Rosman, and naturally he has to travel that road twice daily. Then later we are going to need the road for some of our students to go to Rosman to school.

ROSMAN HIGH SCHOOL NEWS

The basketball team has been in action this year, and has defeated several teams.

The game played at Davidson River resulted in a score of 34 to 4 for the girls, and 11 to 6 for the boys, both Rosman teams winning.

Davidson River returned the two games, playing on the Rosman court. The Rosman girls won in this contest by a score of 20 to 4; the boys tying with a 16-16 score.

Rosman defeated Lake Toxaway, Friday, November 20, the girls winning by a 43-2 score and the boys by a 20-4.

Rosman High School is well equipped for basketball. The equipment cost \$140.00, which has been paid.

Rosman High School has had a rapid increase in number since we have the new school bus. We now have an enrollment of 30 to 35 from Calvert and Cherryfield, and 20 to 25 from Quebec and Gloucester.

On Wednesday afternoon of last week the ninth grade English class presented a dramatization of "Silas Marner," by George Eliot. Mamie Tolley, a member of the class, converted the story into play form. Those who witnessed the version of this realistic novel, no doubt felt the softening influence of the love of a child upon the hardened heart

of a lonely old man. We were reminded of the lines of Wadsworth: "A child, more than all other gifts The earth can offer to declining man"

Brings hope with it, and forward-looking thoughts."

The stage setting presented a realistic picture of Silas Marner's cottage with its old-fashioned furniture and spinning wheel. Early nineteenth century costumes were worn by the characters who were as follows:

- Silas Marner Lyle Henderson
- Eppie Mamie Tolley
- Godfrey Cass Florence Tolley
- Nancy Cass Azilee Owens
- Aaron Winthrop Joe Galloway
- Dolly Winthrop Clara Nicholson
- Ben Winthrop Alma Hall
- The Pastor Mae Jackson
- Mr. Macey Ida Jackson
- Squire Cass Roy Chapman

After this creditable performance a delightful Thanksgiving program was given by the elementary grades.

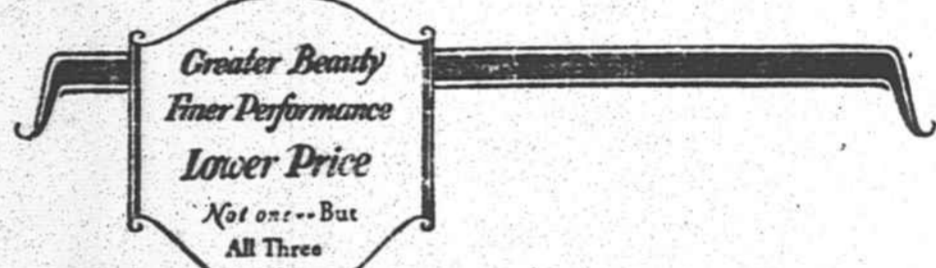
ATTENTION SOULDIERS

If you served ninety days or more in the Spanish and American War, the China Relief Expedition, or in the Philippines Prior to July 4, 1902, you will be interested to know more about the law passed by Congress on June 5, 1920. Many claims filed under this law have been allowed and many have been rejected. A rejection does not necessarily mean that pension cannot eventually be granted. The filing of a new application will again cause the Pension Bureau to take action. If the rejection was on the ground that the soldier was not shown to have been disabled the filing of a new application will give a chance for other doctors to make an examination. Many times the second examination causes the claim to be allowed. This examination is ordered by the Pension Bureau.

This law contains two provisions. It allows pensions to all exsoldiers, sailors and marines with the above service record who were honorably discharged and who are now over sixty-two years of age; 2nd, it allows pension to those who are at present materially disabled from earning their living by hard labor from disease, if the disability be not the result of their own conduct. Such disability must be permanent but need not be total. It need not be the result of military service. The Soldier Does Not Have To Be Sixty-Two Years Old To Claim On Disability. The amount of pension depends upon the degree of disability and ranges from \$12.00 to \$30.00 per month.

If you wish advice about this law write M. E. Buchanan, Route 1, Trevilians, Virginia. Prompt action is desirable as pension if allowed begins from the filing of the claim. Please enclose stamps for reply.

The good farmer now has a good pair of scales, say farm engineering workers of State College.



Unequaled Value

The Oldsmobile Sedan is actually in a class by itself—an unmatched value. Comparison and demonstration prove absolutely that no other automobile offers you such Beauty—such Performance—at such a Low Price.

SEDAN
\$1025
Touring Coach \$875
\$950

Prices f. o. b. Lansing, tax extra

Harris Machine Co.
OLDSMOBILE
SIX



BREVARD'S ONLY QUALITY DEPARTMENT STORE
Patterson's
DEPARTMENT STORE
MAIN STREET
BREVARD, N.C.

