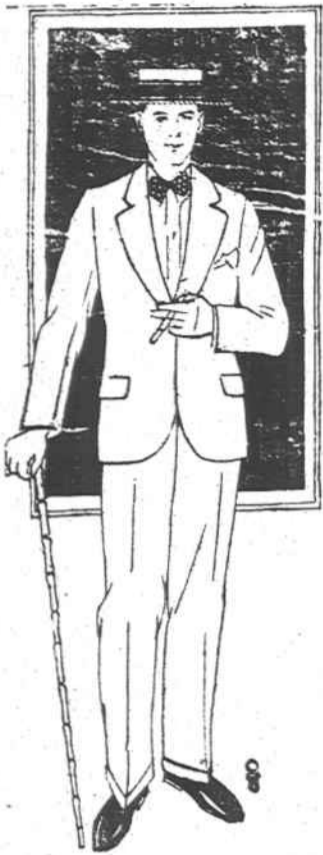


*"It's Your Department Store---Use It."*

# JEROME & PUSHELL'S

## June Clearance Sale



Three (3) More Big Days Sale  
Ends July 3rd. Take Advantage of This  
Opportunity. Dress Up For July 4th.



ONE RACK MEN'S SUITS, \$25.00 VALUES—

**\$14.95**

ONE RACK BLUE AND GREY SERGES

**\$19.95**

ONE ASSORTMENT OF SUITS, TWO PAIR PANTS,  
\$30 AND \$35 VALUES

**\$25.00**

LADIES' DRESSES, \$9.00 AND \$10.00 VALUES

**\$4.95**

WASH SILK AND SPORT DRESSES, \$15.00 TO  
\$20.00 VALUES

**\$9.95**

ONE BEAUTIFUL ASSORTMENT OF LADIES'  
GEORGETTE FLAT CREPE DRESSES

**\$14.95**

**20 % OFF**

ON ALL SUITS  
ON ALL HATS  
ON ALL SHOES

**20 % OFF**

ON ALL LADIES' HATS  
ON ALL LADIES' SHOES  
ON ALL LADIES' SWEATERS

### JUST THREE MORE DAYS

## HERE'S A MONEY MAKER!

We have the exclusive listing on twelve acres of land on Broad street, just outside the city limits. Two small houses on property. Suitable for subdivision. We can deliver this during the next few days at a good price. Excellent terms.

We can deliver several of the best residential lots on Broad street, and also have exclusive listings on some of the best business property in Brevard. Our prices are in line with real values in this section. We handle only property that is priced right. See us if you want to buy or list business or residential property or acreage.

# PINNIX LAND COMPANY

HUGH PINNIX, President

Opposite Court House