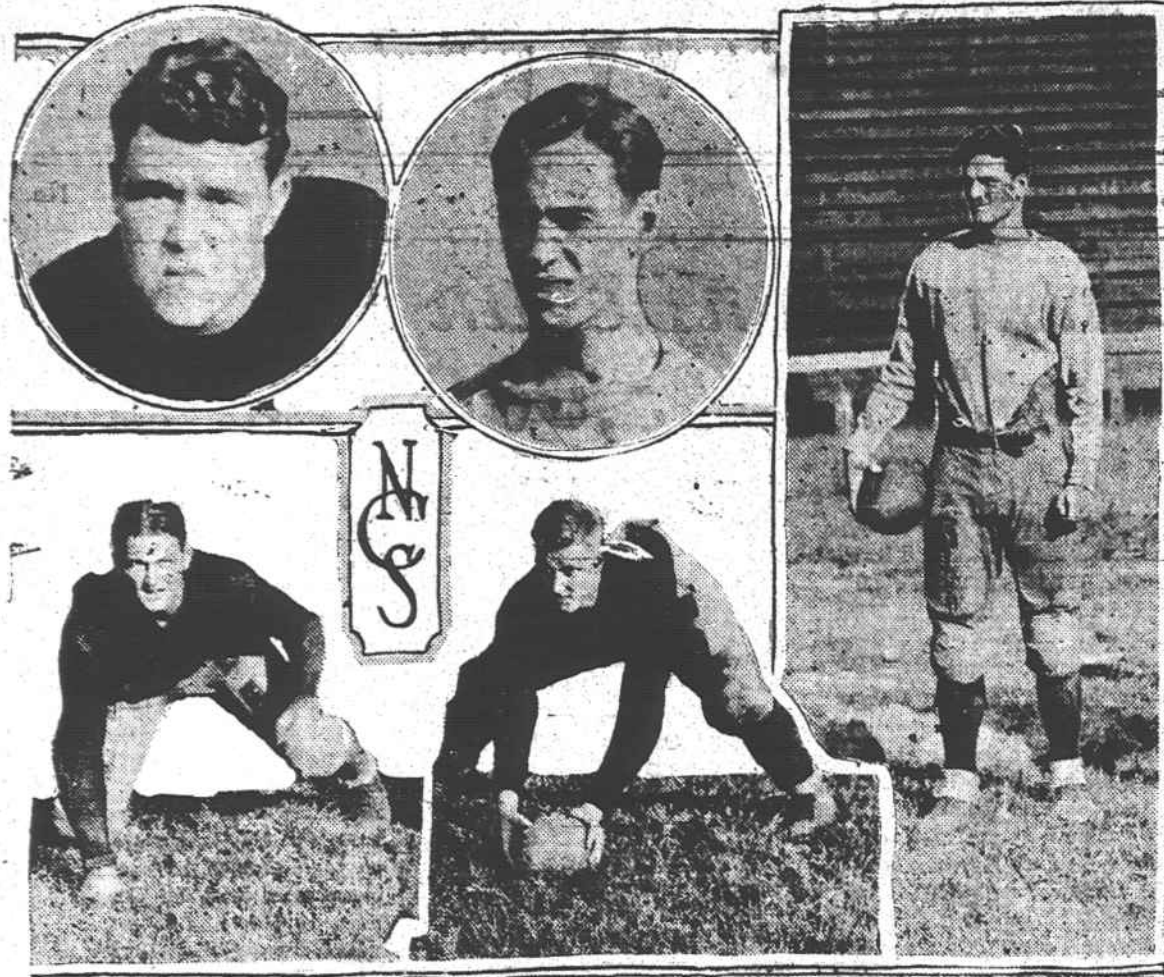


N. C. STATE FOOTBALL PLAYERS WHO WILL TRAIN AT LAKE SEGA IN SEPTEMBER



"FIVE OF THE WOLF PACK'S DEADLIEST FANGS"

TOP INSERTS: Donnell, Jack McDowell; (Standing), Johnston; Bottom: Captain Logan, Bynum. Captain Fred Logan, of Shelby, Mo. Bynum of Raleigh, Jack McDowell of Gainesville, Fla., will arrive the last of this week in Brevard. The rest of the squad will be here by the first of September, when they start training at Lake Sega. During their stay at the suburb village they will be entertained in the various homes.

METHODISTS WIN FROM BAPTISTS; TWO GAMES CALLED WITH TIED SCORES; TUESDAY'S GAME IS RAINED OUT

METHODISTS AND PRESBYTERIANS TIE FRIDAY AND MONDAY

The Methodists gave the Baptists the little end of a 5-3 score Thursday afternoon. The Baptists made a small rally in the last inning, but not big enough to overcome the lead established by the Methodists, so the Baptists went down fighting hard. The Baptists worked hard through the seven innings, but could not produce enough hits off Roland Whitmire to make the necessary runs with which to clinch the game. Both sides played well and made it interesting for the fans.

Pressnell and Corn did good work at bat, both gathering in two hits each. Phillip Price did some fast work on bases, and annexed three more stolen bases to his credit. Price is the best lead-off man in the league and a dangerous man at bat at all times.

Baptists		AB	R	H	E
Price, 1b	3	1	1	0	
Daniels, lf	4	0	1	1	
Short, 2b-cf	3	0	1	0	
Kilpatrick, p	3	1	0	0	
Corn, rf	4	1	2	0	
Sitton, cf	2	0	0	0	
Galloway, cf	1	0	1	0	
Osborne, 2b	2	0	1	0	
Jerome, 3b	3	0	1	0	
Yates, ss	3	0	0	0	
Totals	28	3	8		

Miss Jane Raby of Batn, Eng. who repeatedly declared the "the best man born is not worth marrying," died at the age of 106.

Methodists		AB	R	H	E
Bryson, 3b	3	2	1	0	
Atwell, 2b	3	0	1	0	
T. Whitmire, 1b	1	0	0	0	
English, 1b-2b	4	0	1	0	
Holt, cf	4	1	1	0	
Overton, rf	4	1	1	0	
Presnell, ss	3	1	2	0	
Waters, c	3	0	1	0	
Trantham, lf	3	0	1	0	
R. Whitmire, p	3	0	0	1	
Totals	31	5	9	1	

Score by inning:
Baptists 000 101 1-3
Methodists 104 000 0-5

Summary: Two base hits, English and Holt; Stolen bases, Price 3, Osborne, Bryson, Presnell; Sacrifices, Sitton; Double Plays, Sitton to Price; Base on balls off Kilpatrick 1, off Whitmire 3; Struck out by Kilpatrick 6, by Whitmire 2; Left on bases Methodists 6, Baptists 8; Umpires Carl Harding and Ed Wells.

FRIDAY'S GAME CALLED ON ACCOUNT OF RAIN; SCORE 1-1

Friday's game, between the Presbyterians and Methodists was called at the beginning of the fourth on account of rain, with the score tied 1-1.

The start shown by both teams gave promise of being the peppiest game of the season, both teams playing airtight.

PRESBYS AND METHODISTS CALL MONDAY'S GAME ON ACCOUNT DARKNESS; 4-4

Darkness forced the players from

the field Monday afternoon in the eighth inning, with the score left tied 4-4, in a play-off game between the Presbyterians and Methodists.

This makes the fourth time the Presbyterians and Methodists have met on the battle field and at the end of the day each side retired undefeated. There has been a battle-royal between these two teams all season. Three times the games between these two teams have been called on account of darkness, and once on account of rain—with score tied.

The past two games have been a pitchers duel. Misenheimer was hit by a pitched ball in the fifth inning, which seemed to make him sick for a few minutes, but he got up, and went to the field with his men and finished the game in fine style. Manly also pitched a very creditable game.

The game was featured by the excellent fielding of Jerry Jerome, who played for the Presbyterians. Jerome looked like a "Big Leaguer" in his center field position. He accepted seven chances without an error and made one assist. He also figured in on the only double play of the game. Jerome has improved his game considerably since the beginning of the season and now ranks among the best players in the league. English and Burrell featured the game at bat, each getting two hits each.

HOW THEY STAND

Team	Win	Lose
Presbyterians	8	4
Methodists	7	6
Baptists	5	10

George Antin of St. Louis was fined \$50 for tying paper to a cat's tail and setting it on fire.

When arrested for theft, Alfred Weldon of Bingley, Eng., swallowed a wrist watch he had stolen.

TO ESTABLISH AN "OPEN-AIR WESTMINSTER ABBEY OF THE SOUTH" AT OLD CALVARY

Interesting Ideas of the Rev. Dr. McClellan Being Carried to Completion at Fletcher Church

A very unique and beautiful idea has originated with the Rev. Clarence Stuart McClellan, Jr., rector of old, historic Calvary Episcopal church, Fletcher, a descendant of General George B. McClellan of Civil War fame and a New Yorker by birth and tradition. His idea is called "The Open-Air Westminster Abbey of the South" and is now being rapidly carried on to completion at the famous Fletcher church.

"My idea in this Open-Air Westminster Abbey," says the Calvary rector, "is to memorialize the great poets, writers, musicians—idealists of the South. We have placed the bronze tablet on the granite boulder to Sidney Lanier and this is the starting point for our Westminster Abbey. Now Dr. Joe Shelby Riley, cousin of James Whitcomb Riley, the poet, is to place a tablet and boulder to the memory of the great Hoosier poet, Riley, who was a friend of 'Bill Nye' and a visitor at Calvary church. This Riley tablet will be dedicated next summer, when we are expecting the governor of Indiana, Riley's native state, to attend and the members of the Riley family to be with us.

"Harry Stillwell Edwards, another Southerner of distinction, author of 'Eneas Africanus,' is cooperating with me and has just presented a bronze tablet and boulder to the Georgia poet, Francis Orrery Ticknor, born in 1822, died in 1874, author of the famous 'Little Griffin of Tennessee.' This tablet will also be dedicated next summer.

"These two tablets will be set near the Sidney Lanier memorial in our Poets Corner of Westminster Abbey out of doors."

Other markers and tablets are in the plan of Rev. McClellan, to be erected to the memory of writers of famous books and poems relative to and adopted by the South.

Millions in Pearls



This pagoda, a part of the Japanese exhibit at the Sesqui-Centennial International Exposition in Philadelphia, celebrating the 150th anniversary of the signing of the Declaration of Independence, is made entirely of pearls and its value exceeds \$1,000,000. The exposition continues until December 1.

NOTICE

NORTH CAROLINA, TRANSYLVANIA COUNTY.

W. L. Holsopple et al.

vs.

E. L. Ford

Jack W. Harper
Panther Mountain Estates.

The defendants, E. L. Ford, Jack W. Harper, and Panther Mountain Estates, will take notice that an action entitled as above has been commenced in the Superior Court of Transylvania County, N. C., to enforce a lien upon certain lands and buildings on said land for work done and material furnished; and the said defendants will further take notice that they are required to appear at the office of the Clerk of the Superior Court of said County in the court house in Brevard, N. C., on the first day of September, 1926, and answer or demur to the complaint of the plaintiffs.

N. A. MILLER, Clerk of the Superior Court of Transylvania County.
This 31st day of July, 1926.
County. 4t? 5-12-19-26.

NOTICE

LAND SALE BY COMMISSIONER

Under and by virtue of an order made by the Clerk of the Superior Court of Transylvania county, in a special proceeding pending in said Court before the Clerk, entitled S. E. Greenwood vs Frank Mackey et al. I will sell to the highest bidder for cash at the Court House Door in the town of Brevard, N. C., on Saturday Sept. 18th 1926 at 12 o'clock

M. all the following described lands: Lying in Boyd township, Transylvania county, N. C. on waters of Boilston Creek, bounded as follows:

First Tract: Beginning on three dogwoods in a hollow, runs South 85 deg. West 52 poles to a spanish oak and blackgum; then North 50 deg. West 125 poles to a chestnut oak and blackgum; then West 28 poles to a black oak; then North 50 deg. West 52 poles to a poplar and hickory; then North 52 deg. East 52 poles to a water oak; then North 87 deg. 138 poles to a stake in the Scruggs line; then with the same South 98 poles to the Scruggs corner; then still with the Scruggs line East 30 poles to a maple in a swamp; then South 40 poles to the beginning, containing 100 acres.

Second Tract: Beginning on a sourwood, the north east corner of the First Tract above described, near a branch, runs West 127 poles to a stake; then South 127 poles to a stake; then East 127 poles to a stake; then North 127 poles to the beginning.

Said sale made for the purpose of dividing the proceeds among the various tenants in common as set forth in the petition filed, as their interest may appear.

The bidder at said sale will be required to deposit with the commissioner at the time he secures the highest bid a sum equal to one-half of the price which he bids for said land, as required by the Court in the order made for re-sale as herein advertised.

This August 18th 1926.

Welch Galloway Commissioner.
26-2-9-16 Col.

Unseen Sources of Long Life

The basic sources of automobile value are not always apparent to the eye.

A motor car, like a house, may LOOK a great deal more substantial than it really is.

Because of this difficulty, more and more thousands are turning to Dodge Brothers product for insurance against disappointment.

The years have proved, and each year proves anew, that Dodge Brothers are as deeply concerned with the UNSEEN goodness of their motor car, as with the seen.

The mileage it will deliver, the safety it will provide, the expense and trouble it will save the owner over a period of years, are quite as important to Dodge Brothers as the more obvious details of equipment and style.

TOURING CAR	\$ 897.00
SEDAN	1005.00
ROADSTER	895.00
COUPE	984.50

Jess A. Smith's Garage

DODGE BROTHERS MOTOR CARS

CLEAN SWEEP SALE

Closes Monday Aug. 30

DON'T FAIL TO ATTEND

PLUMMER-COBBLE CO.