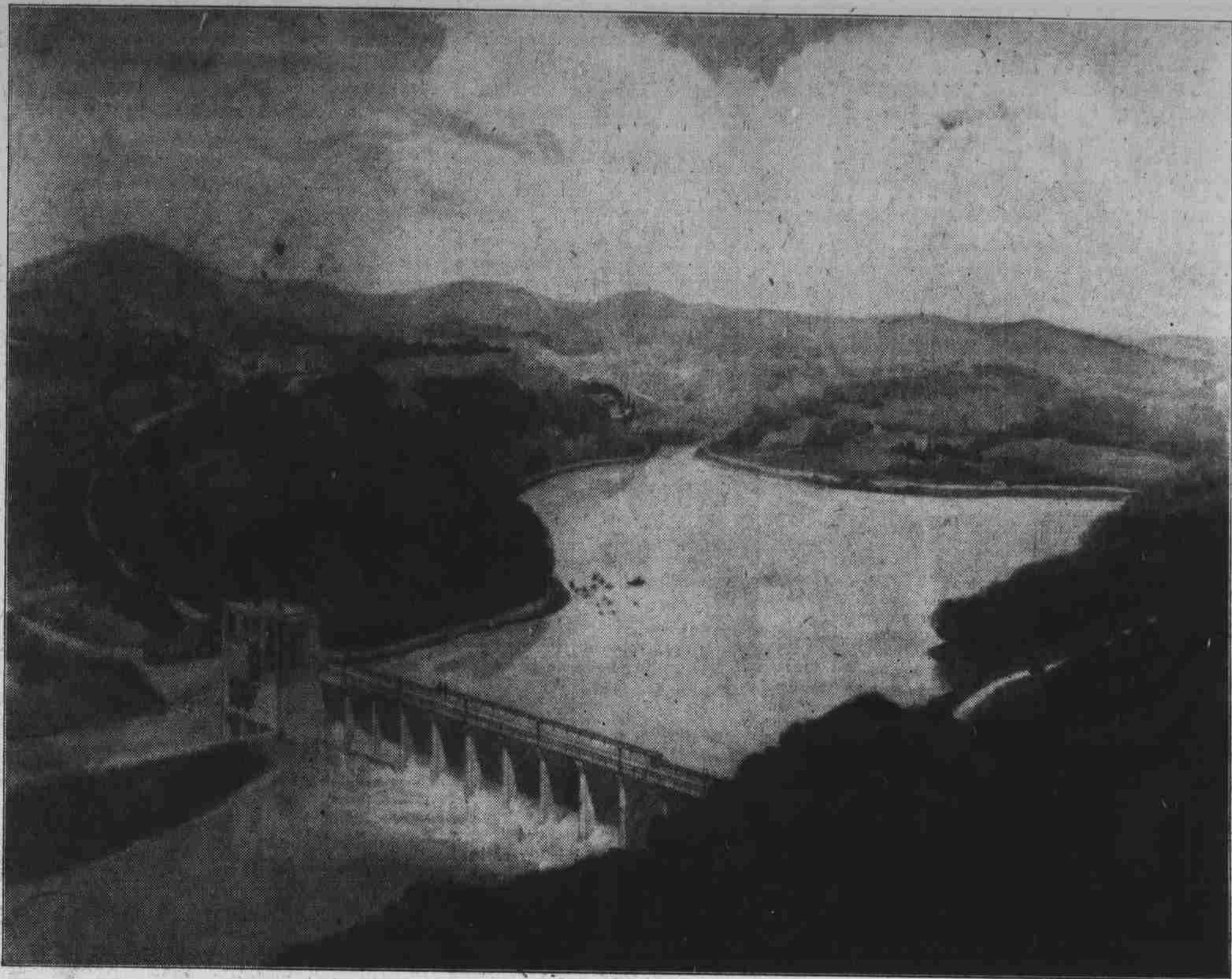


FOLLOW THE ARROW TO LAKE EMORY

225 ACRE LAKE



LAKE EMORY

Where Hundreds Will Build Their Homes

160 Half-Acre Building Lots In Section 1 Prices Ranging From \$700 to \$1000

BUY NOW AT PRE-DEVELOPMENT PRICES

Surface roads and public walk ways are already being laid. When the \$300,000 Dam and Power House now under construction is complete we will have a white way around the Lake and an abundance of electricity.

This ideal division commands a magnificent view, surrounded by ranges of mountains containing the highest peaks in Western North Carolina and faces the enormous lake whose Mountain blueness mirrors the surrounding home sites and mountain peaks.

This restricted resort and community center offers to the home seeker or investor unusual conveniences and opportunities, not only in scenery and climate, which are unexcelled, but in all forms of sports:—

FISHING—Muskellunge, Rainbow Trout, Bass, etc.

BOATING—Motor Boats, Sail Boats, Row Boats, etc.

SWIMMING—Graduated Beach to 35-foot Swimming Depth.

GOLF—Unusually Sporty 9-hole Course.

TENNIS AND CROQUET COURTS etc., everything that goes to make this a paradise in the reach of all.

There is a concrete road just opened from the Georgia-North Carolina State line all the way into Franklin and the Franklin-Asheville Highway is now under construction and this road intersects the LAKE EMORY PROPERTY.

MAKE OUR OFFICES YOUR HEADQUARTERS WHILE IN FRANKLIN.

Franklin Lake Development

W. R. SHEPPARD, Office Main Street, Old Citizens Bank Building, **General Manager**
F. W. CONNELL, **Sales Manager**
FRANKLIN, N. C.

"The Best Investment On the Face of the Earth Is the Earth Itself"