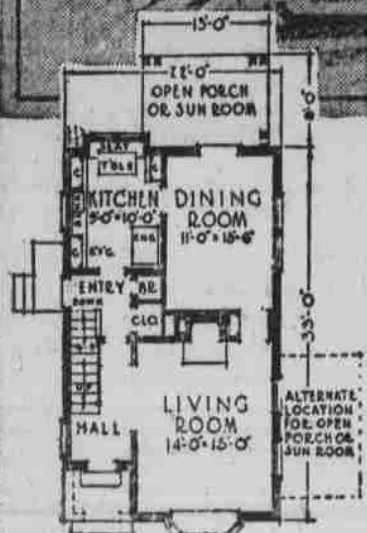
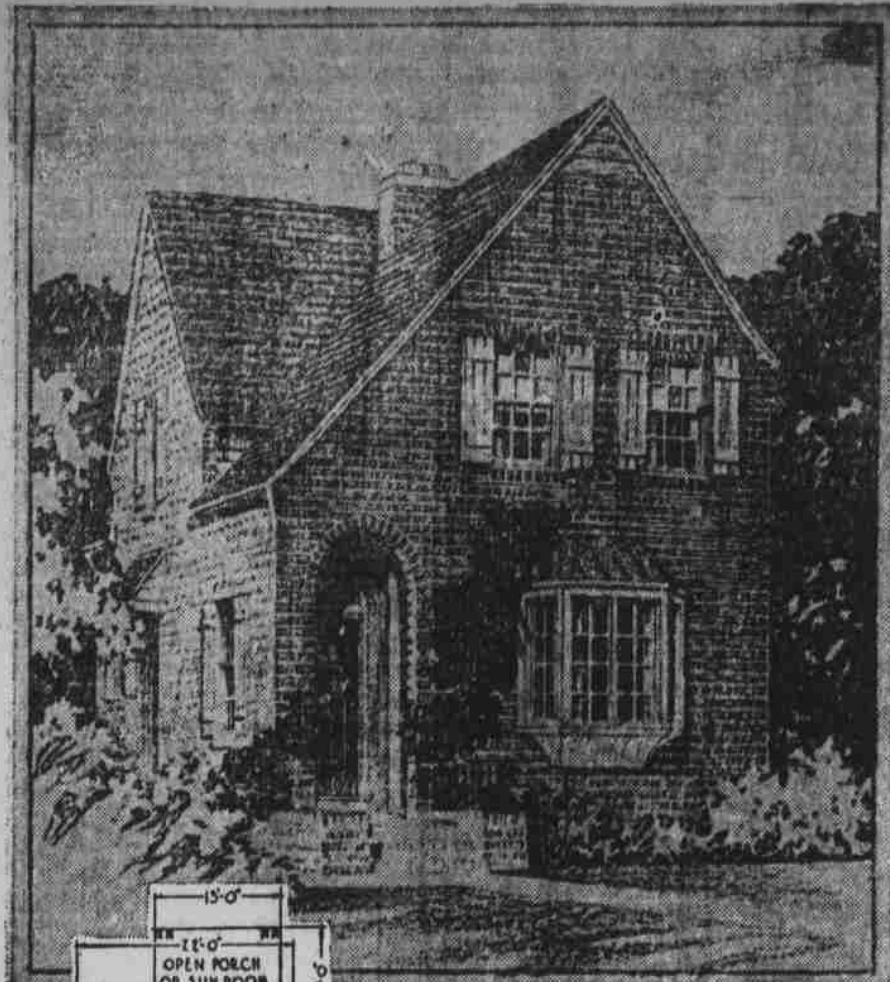


Home-Builder Gets Good Investment Plus Comfort



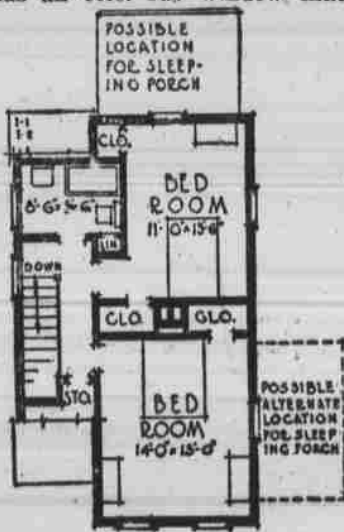
FIRST FLOOR PLAN
CEILING HEIGHT 8'-6"

ECONOMY of space in this five-room English town house has not meant a sacrifice of an artistic exterior. Built of variegated or common brick, whitewashed, with a roof of stained shingles or slate, it presents an unusually attractive and compact appearance. The portico is arched and roofed, and has a red brick floor. The shutters of solid, weathered boards give an interesting departure from the usual New England type.

A number of features provide for exceptional comfort and convenience. The living room has an oriel bay window that gives light from three directions and affords a window seat or fernery within. Every room has windows on two sides, giving cross-ventilation. The house is insulated, walls and roof, with celotex as protection against cold and waste of fuel in the winter, and the hot rays of the sun in summer. The floors are hardwood throughout, and have a layer of celotex placed between them to deaden noises within the house, a feature that is especially appreciated where there are small children and noisy boys in the house.

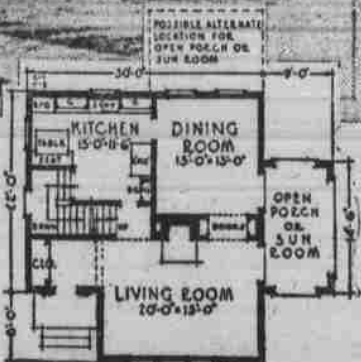
The living room has an open fireplace and built-in book case. The porch or sun room may open off the living room or dining room, and can well have a sleeping porch above if extra sleeping quarters are needed. The service entry is conveniently placed at the side, to save the housewife steps. The kitchen has built-in cupboards, ironing-board and breakfast-nook.

©, Celotechnic Institute, Chicago, 1926.



SECOND FLOOR PLAN
CEILING HEIGHT 8'-0"

This Thrifty Home Brings Joy to the Rent-Weary



FIRST FLOOR PLAN
CEILING HEIGHT 8'-0"

FOR THE family of four or five there is this attractive two-story, six-room house of beveled siding and slate or shingle roof.

One of the interesting features of this house is that every room has a double exposure, while the living room has three sides exposed. Extra windows not shown in the plan may at slight expense be added at either end of the living room. While

this type of house affords the utmost in light and cross-ventilation, it would be well to protect it against the extremes of cold and heat by insulation with celotex for the walls and roof. Such insulation will also cut down outside noises to a marked degree, as in addition to its insulating property, celotex is an efficient sound deadener.

The living room has the much desired open fireplace and cleverly arranged bookshelves flanking the entrance to the dining room. The sun porch may be put either to the side or the back of the house, according to the builders' wishes or to conform to the demands of the lot.

©, Celotechnic Institute, Chicago, 1926.

Dodge Makes Record

Retail deliveries of 4419 new motor cars and trucks by Dodge Brothers dealers in United States and Canada during the week ended November 27 have exceeded all previous weekly records established during the last quarter of any year. Compared with the previous week this year the gain is 37.9 per cent and compared with the corresponding week of 1925 when 2595 cars were sold the gain is 70.3 per cent.

Deliveries during the four weeks of November totaled 14,676 units, a substantial increase over the preceding four weeks of October and a gain of 3,854 units over the corresponding four weeks of November 1925, or 35.6 per cent.

The official figures just released by the United States Department of Commerce showing production of motor cars and trucks in the United States and Canada during the first ten months of this year lend interest to the excellent 1926 records established by Dodge Brothers, Inc.

Total production of motor cars and trucks in the United States and Canada during the first ten months of 1926, was 4,026,879, compared with 3,638,159 during the corresponding month of 1925, a gain of over 10 per cent. From January 1 to November 1 this year Dodge Brothers, Inc., in its plants in United States and Canada has produced and sold 308,641 motor vehicles against 226,848 during the same period last year, a gain of 36.1 per cent. Comparing progress over a longer period Dodge Brothers gain over the first ten months of 1923 is 109.9 per cent; that of the industry, 16 per cent.

"These official records," says J. S. Conley, of the J. S. Conley Motor Co., local dealer, "show that Dodge Brothers gain to date this year is more than three times as great as that of the entire industry and that Dodge Brothers production during three years has grown over six and a half times as much as the total of all American motor car manufacturers. I can conceive of no more convincing evidence of the increasing popularity of the present type of car of which Dodge Brothers have built over 1,800,000 in twelve years."



Announcing-

Important improvements in the sturdiness, operation and appearance of all Dodge Brothers Motor Cars.

J. S. Conley Motor Co.
Franklin, N. C.

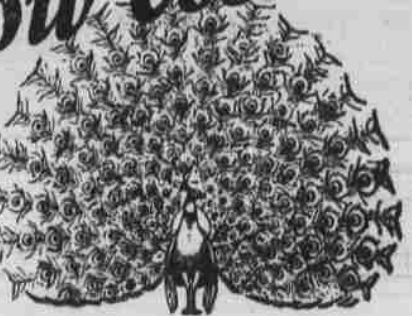
We Also Sell Dependable Used Cars

DODGE BROTHERS MOTOR CARS



For Economical Transportation

An Entirely New Conception of "Quality at Low Cost"



The Most Beautiful Chevrolet in Chevrolet History!

Reduced Prices!

The COACH

\$595

Because it carries the lowest prices ever placed on a truly fine automobile, the Most Beautiful Chevrolet brings into existence an entirely new conception of "Quality at Low Cost."

Never before at Chevrolet's amazingly reduced prices has any manufacturer provided so many fine car features, so many marks of distinction and so many mechanical improvements. These are typified by new bodies by Fisher finished in Duco colors, full-crown one-piece fenders, bullet-type lamps, AC oil filter, AC air cleaner, improved transmission, larger radiator and many others.

You need only to see these supremely beautiful cars to realize why all America is proclaiming them as the greatest sensation of America's greatest industry! You need only to compare them with the finest the market affords to see that they represent the biggest dollar-for-dollar value ever offered! Come in today and get a demonstration!

The Touring or Roadster \$525

The Coupe \$625

The Sedan \$695

Sport Cabriolet \$715

The Landau \$745

1-Ton Truck (Chassis Only) \$495

1/2-Ton Truck (Chassis Only) \$395

Balloon Tires Now Standard On All Models

All prices f. o. b. Flint, Mich.

PERRY-JONES CHEVROLET CO.

Franklin, N. C.

QUALITY AT LOW COST