



DOUGLAS FAIRBANKS as "DON Q. SON OF ZORRO"

## BUILDING LOAN MAKES PROGRESS

**Doubles In Year—Assists In Building Many New Homes—Has Bright Prospects For Year.**

The Macon County Building and Loan Association Wednesday announced the opening of its tenth series of stock.

The Association, organized here four and a half years ago, almost doubled in size during 1926, the number of shares in force increasing from 935 to 1761, or an increase of 826 shares. Officials of the Association hope for an increase of approximately 800 more shares during 1927, and believe that at least half that additional number will be sold in the tenth series of stock.

The local Building & Loan Association, which has out in loans more than \$50,000, estimates that it has helped build approximately half the new homes in Franklin during the past two years.

And its officers are pointing out that its activities are not necessarily confined to Franklin. As its name implies, it is a county organization, they say, and it seeks members throughout the county, and stands ready to assist citizens any where in the county to build or buy homes.

Last year, it earned for its stockholders slightly more than six per cent, the audit of its books for the year showed. In addition, it pays, semi-annually, a dividend of five per cent flat on all fully paid stock.

At the end of the year, it had received payments on installment stock totalling more than \$38,000, and had sold \$13,300 in fully paid stock.

The fully paid stock is the investment end of the Building idea, as

distinguished from the savings end, for which the installment stock was created. On fully paid stock, the member pays \$100 per share, in cash. In return, he receives a stock certificate and is guaranteed five per cent, payable semi-annually. His investment is non-taxable; hence the return is the equivalent of between eight and 10 per cent, according to the tax rate.

Press want ads bring results.

## FRANKLIN CIRCUIT M. E. CHURCH, SOUTH

We will hold our summer meetings at the following dates:

Clarks Chapel: July 10th to the 17th.

Snow Hill: July 17th to the 24th.

Pethel: July 24th to August 5th.

Jotla: August 7th to the 21st.

Salem: August 21st to the 31st.

We will give dates to the other churches of the Circuit before July, P. C.

*It takes muscle to stir a cake*

AND it takes real strength to make it "raise." That's why the purest, highest quality baking powder is the only kind that pays.

Snow King Baking Powder always succeeds because it has unusual leavening power.

Everything about it is right and it is always the same quality—fine, clean and pure as snow on a mountain top.

THE KENTON BAKING POWDER CO., Cincinnati, Ohio



Try Snow King once and you'll never "go back" to other brands. We guarantee every spoonful in every can—the same as we have done for 50 years or more.

**SNOW KING BAKING POWDER**

SINCE 1873 MAKERS OF



GOOD BAKING POWDER

## W. N. SLOAN CIVIL ENGINEER

Registered under act of General Assembly of North Carolina. Careful personal attention given to all work.

Room Twelve  
Bank of Franklin Building,  
Franklin, N. C.

## Poultry Sale

Macon county farmers gathered here Wednesday for a co-operative poultry sale, sponsored by the Macon County Farmers' Federation. Co-operating with the federation in the sale was Lyles Harris, Macon county's new county agent.

The fact that the local price for poultry declined approximately one-third after County Agent J. V. Arrendale, who gave much attention to co-operative sales of poultry was transferred to Clay county a month ago, lent additional interest to today's sale.

## SOLED and HEeled

That's all you need to put the shoes you are about to throw away in good shape. We use only the "best of leather" in half-soles, All work guaranteed.

I am now located in the Frank's Building, formerly occupied by Reece's Restaurant. Will appreciate your patronage.

**EARL ANGEL**

## Wanted Poplar Logs

We pay cash for logs delivered to railroad, cut 12-14 and 16 ft. long, or for standing timber. Logs inspected and paid for every week. Write or wire---

**Hoffman Lumber Co.**  
Columbia, S. C.

## W. B. LENOIR GENERAL INSURANCE AGENT

Life, Fire, Employees Liability, Automobile, Accident, Health, Bonds, etc.

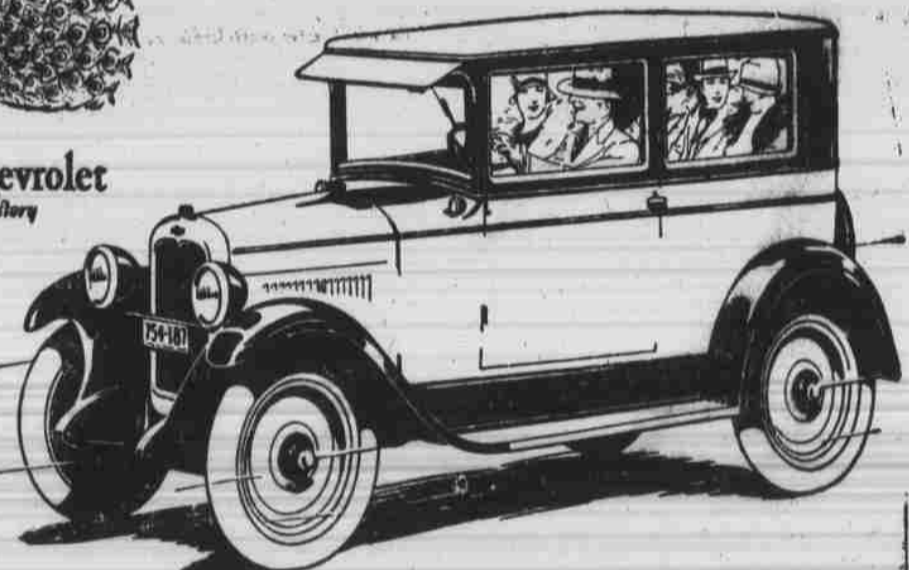
Thanking all clients for their liberal patronage in the past, I hope to merit a continuance of the same and will gladly welcome many new clients.

## FARM WANTED

Wanted; to purchase good farm, in high state of cultivation, on or very near highway. Must have fairly good buildings, 15 or 20 acres of bottom or flat lands, several acres of good timber for fuel, streams, some land suitable for pasture.

The place must be in Macon county, the price must be right as purchaser expects to pay one-half or three-fourths cash. Write a detailed description in first letter with sketch if possible showing streams, roads, buildings.

P. O. Box 2130 Asheville, N. C.



The COACH  
\$595  
f. o. b. Flint, Mich.

*More for Your Money than you ever thought possible*

Already the Most Beautiful Chevrolet is scoring the greatest success in Chevrolet history! Because no other low-priced car ever supplied so completely all the attractions of a high-priced automobile!

Here truly is more for your money than you ever thought possible—more than even Chevrolet, with its progressive

policies and magnificent factories, could possibly offer, were it not for the economies of tremendous volume production.

Come in—see the Most Beautiful Chevrolet. Drive it. Learn what makes it the greatest triumph in automobile history—and why it is winning new buyers at a rate of tens of thousands each week!

—at these amazingly low prices

The Touring . . . \$525	The Sedan . . . \$695	1-Ton Truck (Chassis only) . . . \$495
The Roadster . . . \$525	Sport Cabriolet . . . \$715	1/2-Ton Truck (Chassis only) . . . \$395
The Coupe . . . \$625	The Landau . . . \$745	Balloon tires now standard on all models.

In addition to these low prices, Chevrolet's delivered prices include the lowest handling and financing charges available.

**PERRY-JONES CHEVROLET CO.**  
Franklin, N. C.

**QUALITY AT LOW COST**