

Stiles Locals

Dear Mr. Harris:—As I am a reader of The Press and as our community is not represented I would like to have space for only a few words, so here I am.

As our school is nearing to a close I want to say we have had a good rural school, with Mr. F. T. Love as our teacher. He has been with us two years and we suppose he will be back next year. We will be more than pleased to have him, as he is a wonderful young man. He has been so nice in every respect. He attended church and Sunday school lots of the time, so I think that good to say of a young man of today.

Mr. Albert Bennett has been visiting home folks but has returned to Cullowhee where he is attending school.

We regret to report that grandma Bates is very low. She is near 100 years old.

We are having a reading contest in our Sunday school at Tellico church to read the New Testament through in six months. I wonder how many of The Press readers will join in and help us to fight the battle for our blessed Lord and Master. If we don't read we haven't any plea to put against the prophets that rise up in our day, and also the Good Book says to teach it to our children. We all know we can't teach that we don't know anything about.

Wells Grove News

Sunday school at this place is progressing nicely considering the weather at this time of year.

We are expecting Rev. George Cloer to preach at Wells Grove Saturday night and Sunday morning.

Mr. Dave Angel has been in the hospital a few days on account of a serious accident.

Mr. John Angel and family have moved from this community to their new home near Dillard, Ga.

Mr. Fred Guffee has returned home from Rutland, Mass., where he has been at work for several months.

Mr. J. D. Keener and family have

moved back to their home in this community. They have been living at Murphy where Mr. Keener has been at work.

Misses Helen and Mildred Daves were week end visitors of Miss Mildred Snyder last week.

Mrs. G. W. Culver has been sick for several days.

Miss Lois Snyder spent Christmas holidays in Cornelia and Gainesville, Ga.

Miss Lizzie Mashburn visited home folks during Christmas. She returned to Canton Monday of last week.

NOTICE

North Carolina, Macon County,

Whereas power of sale was vested in the undersigned trustee by deed of trust from Iris Porter Miller and her husband, T. K. Miller and Flor-

ence Porter to Henry G. Robertson, trustee, dated the 22nd day of September, 1925 and registered in the office of the register of deeds for Macon county in book 30, page 259, to secure the payment of a note for \$3,000.00 of even date with said deed of trust, payable three months from date and said note bearing interest at the rate of 6 per cent per annum, to N. W. Gennett; and

Whereas default has been made in the payment of said note with the interest thereon from the 22nd day of June, 1926, and also the further sum of \$51.47, paid by the said N. W. Gennett for insurance on the said property, as in said deed of trust provided, with interest on said sum of \$51.47 from the 12th day of September 1927; and whereas, the holder of said deed of trust having requested the undersigned trustee to exercise

the power vested in him by said deed of trust,

I will, therefore, on Monday, the 6th day of February, 1928, between the legal hours of sale, sell at the court house door in Franklin, North Carolina at public auction to the highest bidder for cash the following described property:

Being what is commonly and generally known as Oak Hill, situated on Franklin-Murphy highway, two miles west of Franklin, and beginning at a stake on the north bank of the Murphy road, about 2 poles east of where the Oak Hill road leaves the Murphy road, same being Grover Lewis' S. W. corner; runs thence with Lewis' line N. 8 poles and 10 links to a stake in the old road; then east with the old road 3 poles to a stake in the J. S. Waldrop's line; thence with the Waldrop line N. 40 1-2 poles

to a double chestnut; then N. 5 E. 44 poles to a stake in the line of the Lish Hawshaw tract (the N. E. corner of a deed from Waldrop to J. A. Deal) then S. 65 W. with the line of the Hawshaw tract 43 poles to a stake; (J. A. Deal's old corner) then N. 70 W. with the line of the Lum Porter land 40 poles to a stake; then N. 61 W. 10 poles to a stake (the N. E. corner of the J. Q. Wallace tract); then with the line of the Wallace tract S. 2 E. 110 poles to a stake; then S. 88 1-2 W. 4 poles to a stake (N. E. corner of W. R. Wallace tract) then S. 1 1-2 E. with the line of Wallace tract 35 poles to a stake on north bank of Murphy road; thence with the road 100 poles to the beginning.

This the 5th day of January, 1928.
HENRY G. ROBERTSON, Trustee. p4E2

for Economical Transportation
Again CHEVROLET
-the Greatest Sensation of America's Greatest Industry

Again, Chevrolet has created an automobile so far beyond all expectations in the low-price field that it constitutes the greatest achievement of America's greatest industry.

Built on a 4-inch longer wheelbase—offering numerous improvements in performance, beauty and safety—the Bigger and Better Chevrolet marks a spectacular epoch in the development of luxurious transportation at low cost.

The engine is of improved valve-in-head design with alloy "invar strut" pistons . . . hydro-laminated camshaft gears . . . mushroom type valve tappets . . . AC oil filter . . . AC air cleaner and a new crankcase breathing system.

Throughout the entire car similar

advancements are represented—from the four-inch longer wheelbase and the new semi-elliptic shock absorber springs—84% of the wheelbase, to the marvelously beautiful new Fisher bodies in new Duco colors.

Come in and drive this great new car. Drive it through traffic—and get the thrill of its darting pick-up . . . the smooth, certain action of its non-locking four-wheel brakes! Drive it on the open road—and test every point in the speed range for smoothness and roadability! Try it on the hills—and learn the true meaning of Chevrolet power!

Do that—and you will agree with thousands of others that here is the world's most luxurious low-priced automobile.



Every feature of advanced design demanded in the finest cars now offered in the New Chevrolet! Read this partial list.

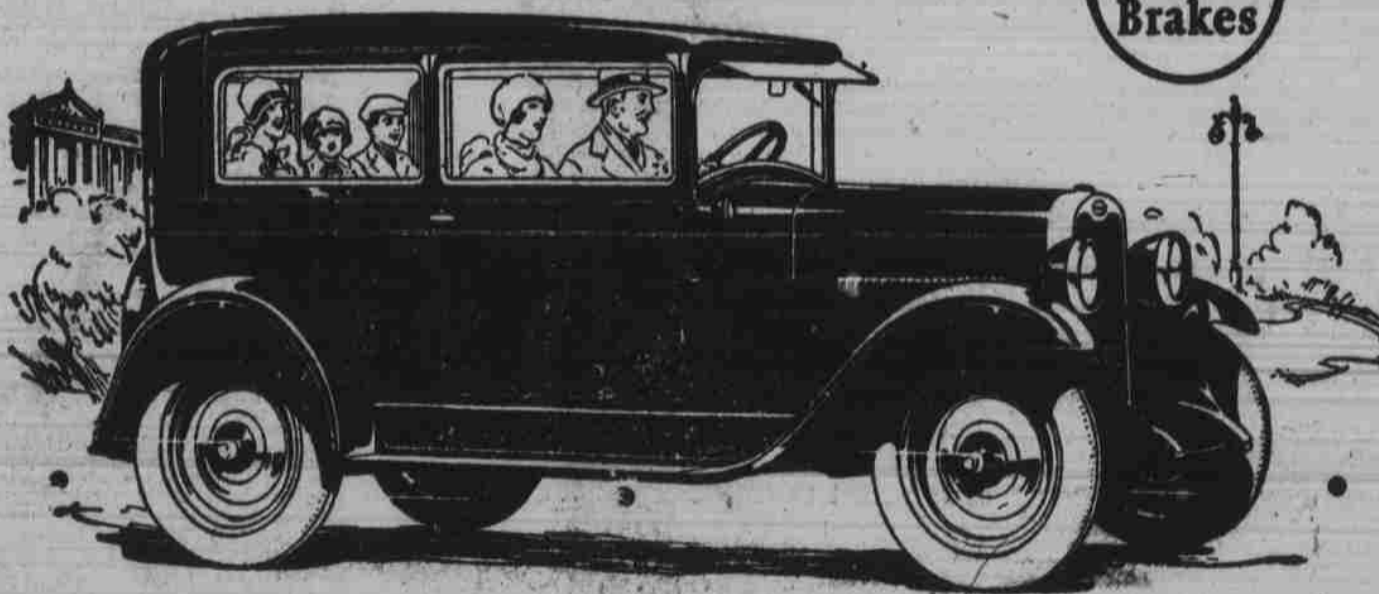
- Improved valve-in-head motor.
- New stronger frame 4" longer wheelbase 107".
- New four-wheel brakes.
- Thermostat control cooling system.
- New alloy "invar strut" pistons.
- New instrument panel indirectly lighted.
- New ball bearing worm and gear steering.
- Semi-elliptic shock absorber springs; 84 per cent of wheelbase.
- Safety gasoline tank at rear.
- Larger balloon tires 30" x 4.50".
- New streamline bodies by Fisher.
- New Duco colors.
- Theft-proof steering and ignition lock.
- A. C. oil filter.
- A. C. air cleaner.
- Single-plate dry disc-clutch.
- New crankcase breathing system.
- New two port exhaust.
- Heavy one-piece full-crown fenders.
- Alemite pressure lubrication.
- Vacuum tank fuel supply.
- Improved Delco-Remy distributor ignition.
- Combination tail and stop light.
- Large 17" steering wheel with spark and throttle levers located on top.
- Rear view mirror.



"Prices Reduced!"

- The Roadster . . . \$495
- The Touring . . . \$495
- The Coach . . . \$585
- The Coupe . . . \$595
- The Four-Door Sedan . . . \$675
- The Sport Cabriolet . . . \$665
- The Imperial Landau . . . \$715
- Light Delivery Truck (Chassis Only) \$375
- Utility Truck (Chassis Only) \$495

All prices f. o. b. Flint, Michigan



PERRY-JONES CHEVROLET Co.

FRANKLIN, N. C.

QUALITY AT LOW COST

W. N. SLOAN CIVIL ENGINEER

Registered under act of General Assembly of North Carolina.

Careful personal attention given to all work.

Room Twelve
Bank of Franklin Building.
Franklin, N. C.

ESSIG MARKET

H. O. ESSIG, Prop.

Fresh Meats of All Kinds
Fine Home Made Sausage

Everything kept in a first class market. Phone 42

New York Life Insurance Co.
Established in 1845
A Mutual Company

Protect your family with a policy in this old line company.

REID CABE LOCAL AGENT



SHOE REPAIR

-- That Lasts!

Not for just a day, not for just a month but for many, many months will the shoe that I RE-SOLE--last you. For, into that Re-Soling will go first class workmanship plus leathers that'll wear "like iron!"

Try Me

EARL ANGEL

Next Door To Press Office