

## MILLIONS SPENT ON W. N. C. POWER

### Big Projects Under Way In Mountain Streams By Tallassee

(By George McCoy)

Robbinsville, N. C., Jan. 15.—Millions of dollars are now being expended by the Tallassee Power company in the development of the power resources of the Tennessee River and its tributaries in the mountains of North Carolina and Tennessee.

The power company, which is a subsidiary of the Aluminum Company of America, with headquarters in Pittsburgh, Pa., is constructing a series of dams to supply power for the immense aluminum plant, which has been in operation at Maryville, Tenn., for several years.

Tapoca and Cheoah dams have been completed by the power company, and work is being pushed on the building of a third dam at Calderwood, Tenn.

Surveys have been made, land bought, and plans in large measure completed for the construction of four other large dams in North Carolina. As soon as one dam is completed by the power company, another is started.

Construction of a dam by the company at Bushnell, will call for relocation of the tracks of the Murphy Division of the Southern Railway System, between Bushnell and a point near Bryson City, a distance of about 12 miles. A preliminary survey, with this in view, has been made by engineers for the railway.

Tapoca dam, on the Tennessee River in Graham county, above the mouth of the Cheoah River, was the first big development undertaken in this section by the Tallassee Power company. Work was started during the

World war and some \$6,000,000 was expended in the building of the power house and dam, which is about 200 feet high and 600 feet long.

The Tapoca dam backs water up the Tennessee River to a point near Rhymer's Ferry, a distance of about 10 miles. At Rhymer's Ferry a power house is being constructed to utilize the water conveyed from the big development eight miles north of Robbinsville, which is now complete.

Water is to be carried between the Cheoah dam, at Santeehla, and the power house at Rhymer's Ferry, a distance of about five miles, by means of a penstock line which tunnels for about two miles through a mountain between Yellow Creek and the Tennessee River. This penstock line, which is of reinforced concrete and steel, and 11 feet in diameter, is about completed.

As a result of the building of the penstock line, the bed of the Cheoah River, from the Cheoah dam to the river's mouth, will be dry with the exception of water received from a few mountain streams between the two points.

The Cheoah dam, at Santeehla, is about the same size as the Tapoca dam, and was built, together with the penstock line and power house, at a cost of about \$12,000,000.

This dam, which was completed last fall, will back water up the river for several miles to within one mile of Robbinsville. The lake, which will cover 3,000 acres, is being filled, the gates of the dam having been closed the latter part of December. The lake is expected to be filled by early summer. This development was started in July 1926.

Work is going ahead rapidly on the construction of the third dam at Calderwood, Tenn., which will be about

the same as the Tapoca and Cheoah developments. The Calderwood dam is about nine miles below the Tapoca dam, and will back water up to the latter project. Plans call for its completion within two years.

It is estimated that these three dams will generate something like 200,000 horsepower.

Preliminary surveys have been made by the power company's engineers for the building of dams at the following places:

(1) At Fontana, on the Tennessee River in Swain county, where the dam will back water to Bushnell.

(2) At Bushnell, below the forks of the Tennessee and Tuckaseegee Rivers, where the waters will be backed to near Bryson City on the Tuckaseegee and to near Almond on the Tennessee River. This project would call for the removal of the Southern Railway between Bushnell and Bryson City. The Power company is said to be acquiring land now for this development. W. C. Penn, purchasing agent for the company, recently moved his office from Calderwood, Tenn., to Bryson City.

(3) At Needmore, near Almond, in Swain county, where the dam would back water into Macon county for several miles. The company is said to own two dam sites above Almond on the Tennessee River.

(4) Near Aquone, on the Nantahala River, in Macon county, property for which development is reported already purchased. The company is said to own five dam sites on the Nantahala.

The Tallassee Power company, it is stated, owns practically the whole of the Tennessee River watershed in Graham, Swain and Macon counties, an immense tract, and is still acquiring additional lands.—Asheville Citizen.

## REPUBLICAN PLAN TO CAPTURE THE TENTH

Smathers to Run Again

Washington, D. C., Jan. 18.—With the Democrats threatened with revolt over the Smith issue, North Carolina Republicans are planning to capture the Tenth Congressional District and from all indications Congressman Weaver is going to have a hard fight.

Kenneth Smathers, who was the Republican candidate in last election and who greatly reduced the standing Democratic majority, is already at work and promises a most vigorous campaign, and in view of the showing he made in last election, it is understood that the National Congressional Committee is going to show more interest than usual.—Blue Ridge Republican.

## GOOD FOR ALL TIME

MONUMENTS, GRANITE and MARBLE

SOLD BY

R. F. HENRY  
FRANKLIN, N. C.

Before Buying See Him for Prices  
and Save the Agent's Profits

## ALL KINDS OF "OLD LINE" INSURANCE

The Dependable Kind  
"Performance Beyond the Contract"  
Inquiries Cheerfully Answered

"NUFF SED"

W. B. LENOIR, Agent

## W. N. SLOAN

Registered under act of General Assembly of North Carolina.

Careful personal attention given to all work.

Room Twelve  
Bank of Franklin Building.  
Franklin, N. C.

## ESSIG MARKET

H. O. ESSIG, Prop.

Fresh Meats of All Kinds  
Fine Home Made Sausage

Everything kept in a first class market. Phone 42

## New York Life Insurance Co.

Established in 1845  
A Mutual Company

Protect your family with a policy in this old line company.

## REID CABE

LOCAL AGENT



SHOE REPAIR

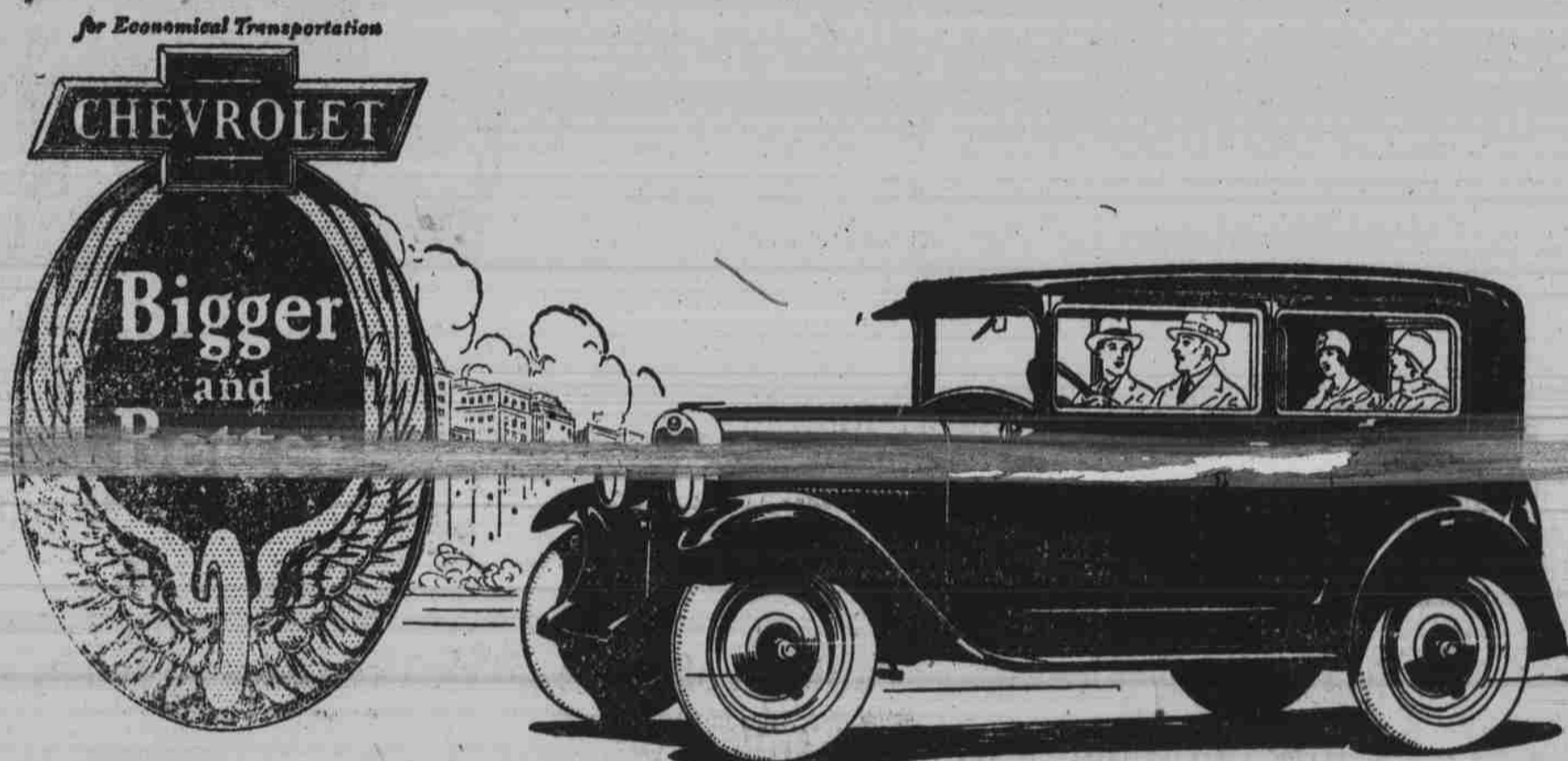
... That Lasts!

Not for just a day, not for just a month but for many, many months will the shoe that I RE-SOLE--last you. For into that Re-Soling will go first class workmanship plus leathers that'll wear "like iron!"

Try Me

EARL ANGEL

Next Door To Press Office



# New Beauty - New Comfort New Performance!

"Prices Reduced!"

an amazing revelation  
in a low-priced car

The  
COACH  
\$585

- The Roadster . . . . \$495
- The Touring . . . . \$495
- The Coupe . . . . \$595
- The Four-Door Sedan . . . . \$675
- The Sport Cabriolet . . . . \$665
- The Imperial Landau . . . . \$715
- Light Delivery Truck (Chassis Only) . . . . \$375
- Utility Truck (Chassis Only) . . . . \$495

All Prices f.o.b. Flint, Mich.  
Check Delivered Chevrolet Prices  
They include the lowest handling and financing charges available.

Built on a 107 inch wheelbase, 4 inches longer than before—offering new Duco-finished Fisher bodies whose distinction reveals the world famous mastery of Fisher craftsmen—providing the safety of four-wheel brakes, a new measure of comfort, thrilling new power, speed and smoothness—the Bigger and Better Chevrolet is being everywhere acclaimed as an amazing revelation in a low-priced car!

See this truly sensational automobile! Note how the hood lines stream back from the higher radiator and blend gracefully into the body contours. Note the interior atmosphere of

richness and elegance. Check the chassis—and discover every feature of advanced engineering design demanded in the finest motor cars. Then go for a ride!

Experience the flashing get-a-way and marvelous smoothness of the improved valve-in-head engine with its new alloy "invar strut" pistons, and many other improvements. Travel rough roads and observe the cushioning effect of the new semi-elliptic shock absorber springs. Do that, and like tens of thousands of others, you will be amazed to learn that such a car can sell at such low prices!



PERRY-JONES CHEVROLET Co.  
FRANKLIN, N. C.

QUALITY AT LOW COST