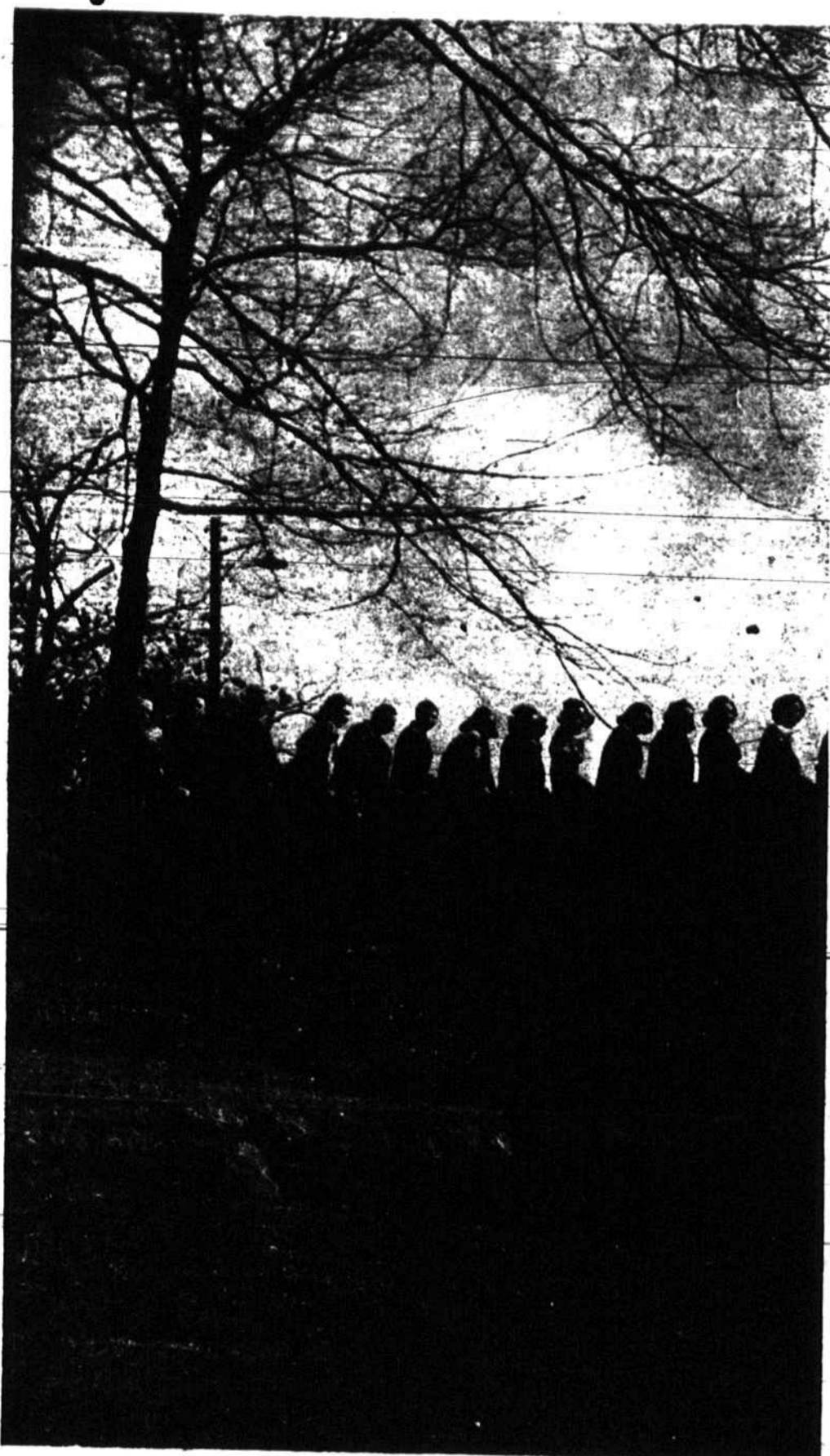


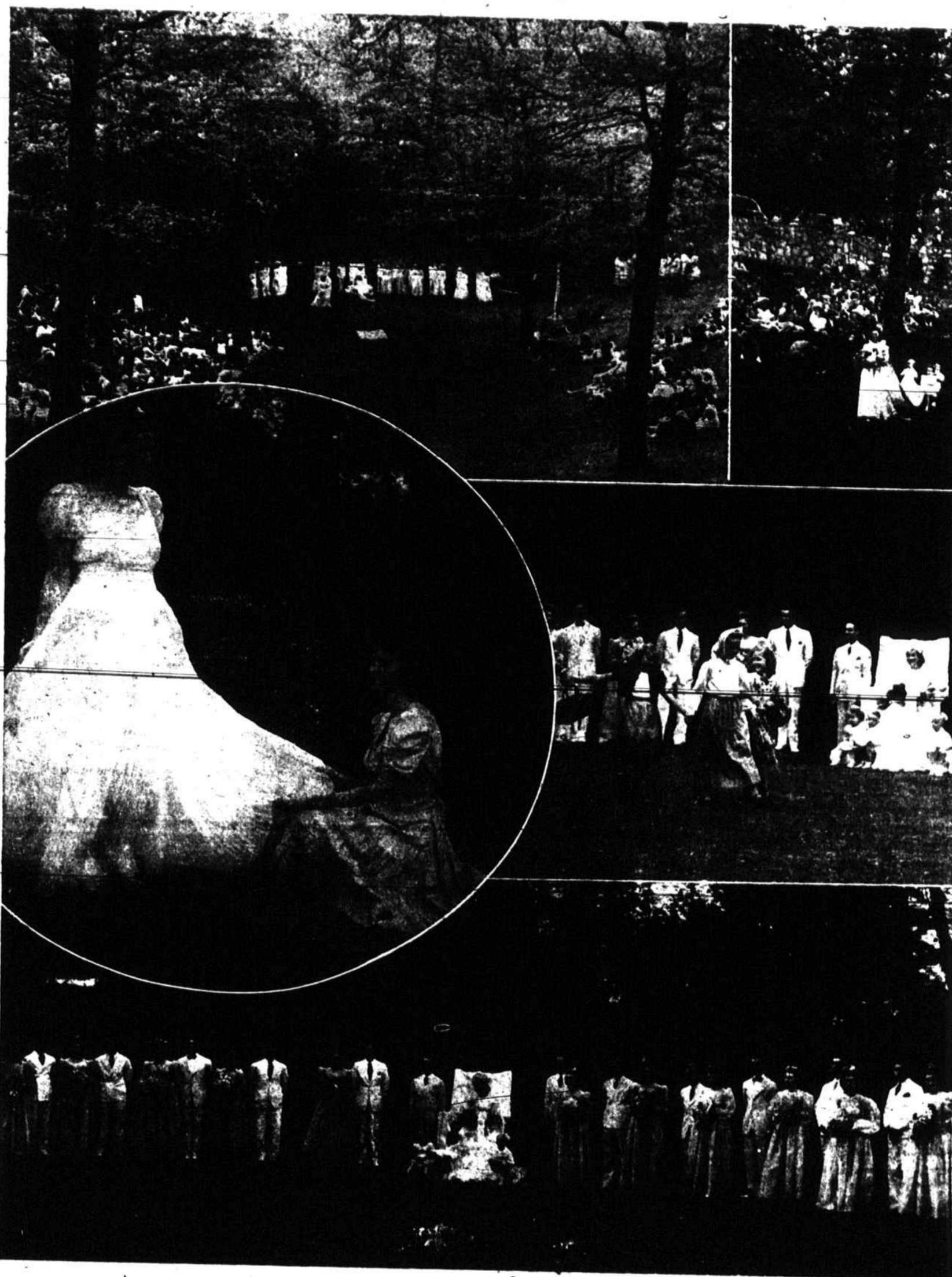
Welcome Faculty And Students Of W C T C

Students On Campus Wall



This beautiful campus wall is a favorite spot for students to relax after class room hours.

Scenes Taken On The Campus At Cullowhee



The natural beautiful setting of Western Carolina Teachers College is made even prettier by the many colorful activities staged on the campus throughout the year. At the right is a group of scenes made during such an event.

School Lunch Room Opened At Webster

The lunch room of Webster school opened Monday, August 30, under the supervision of Miss Mary Simmons, the home economics teacher. Assisting Miss Simmons and Mrs. Jessi Bumgarner, the chief cook, are a number of high school boys and girls.

One hundred and fifty pupils were served lunch Monday, and the number served increased to two hundred and two by Thursday, Sep-

tember 2. The aim of the school is to feed all of the student body. Milk is not being included in the regular lunch, but is sold to those who wish to buy it. Pupils are urged to bring produce from home to exchange for lunches. Canned food is acceptable if the non-acid foods, such as beans, peas and corn have been canned in a pressure cooker.

READ THE WANT ADS



Students

Good Looking Heads
Look Better When We
Cut Your Hair . . .

Faculty Members . . .
We Can Please

YOU!

BUMGARNER'S BARBER SHOP

End of East Main Street, At Bridge
Near Meade Plant

Why These



S M I L E S ?



Hooper Fixed Their Car Welcome W C T C

Repair . . . Lubrication . . . Washing . . . Waxing
Modern Shop Courtesy

FIRESTONE TIRES

Hooper Motor Co!

DEXTER HOOPER
Buick — Pontiac — GMC Trucks
Phone 72 East Main Street Sylva, N. C.

Glad You're Back W C T C

Faculty and Students!



We Can Get It
For
You If Anbody
Can.

TOOLS
IMPLEMENTS
PAINTS

Everything in Hardware,
as permitted by Waf
Conditions.

Cannon Brothers

HARDWARE DEPARTMENT

Phone 56 East Main Street

Guests Are Heard At Rotary Dinner

Quite a cherry gathering of Sylva Rotarians at their bi-weekly meeting Tuesday, August 31, was reported by W. J. Fisher, secretary-treasurer of the club.

There was an address of unusual interest by the principal speaker, Dr. E. J. Johnson, employed as physician in charge by the U. S. government at the nearby Cherokee reservation.

Dr. Johnson's subject was "Modern Medicine In Time of War", and this included an enlightening explanation of recent advancement of the sulfa drugs, besides a detailed account of the new "miracle" chemical, penicillin. The speaker cited incidents of life-saving attributed to this new discovery, which held the members' closest attention.

A very welcome visitor was Phil Elliott, Rotarian, and former president of the Sylva group. A cordial reception was accorded the son of Rotarian Dean Bird, of Western Carolina Teachers College, and, when Sergt. Bradley, soldier guest, spoke briefly of his experiences in Guadalcanal and other Pacific

fighting zones, the attentive silence was ample testimony of his message's import.

The next meeting is scheduled for Tuesday, September 14.

Silage Furnishes Economical Feed

Silage furnishes one of the best and most economical home-grown roughages for cattle and takes the place of green grass during the critical winter feeding period, says John A. Arey, Extension dairyman at N. C. State College.

Silage is economical because a large quantity of the feed can be grown on a limited acreage with a comparatively small amount of labor and because only small loss is sustained during the harvesting and feeding operations.

If all of the silage is not fed during the winter months, it can be used during the dry periods in summer as a valuable supplement to grazing. Arey says that silage is a very necessary feed for dairy cows since it is a succulent and palatable feed, and it also finds a place in the feeding program of producers of beef cattle.

The proper time to cut corn or sorghum for silage, according to the specialist, is when it contains the maximum amount of feed nutrients

and at the same time enough moisture to make it pack well in the silo. Under the exceptionally dry conditions prevailing this summer, growers have been forced to add water in putting in their silage.

With corn, the grain should be denting and the shuck slightly yellow, when the crop is ready for the silo, Arey advises. This stage of maturity is reached about a week to ten days before the corn is ready to cut and shock. Sorghum should not be cut until the seed in the head are firm.

Milo: "Porter, get me another glass of water."

Porter: "Sorry, suh, but if I take any mo' ice, dat co'pse in de baggage car ain't going to keep."

Buy War Bonds and Stamps.

Smart . . . Distinctive

Stationery

a style and size for
every purpose

We have stationery made for those
who like fine papers

THE HERALD

W C T C

Faculty and Students



Join the procession — Sylva, Jackson County, and folk of this whole section. Visit our Sweets Shop.

Campbell's ICE CREAM

Made Fresh Daily

20¢ Pint

In Ritz Theatre Building

SYLVA'S

Dodge-Plymouth Dealer

Welcomes W C T C

Quality Cars, a Quality College and (we trust) A Quality Agency. Sylva and Jackson County like our service. Try us . . .

We Service All Makes of
Cars . . .



CASH For Your USED CAR

Cogdill Motor Co.

Dodge, Plymouth, Dodge Trucks