

### STATE COLLEGE ANSWERS TIMELY FARM QUESTIONS

**QUESTION:** What can I do to control termites in the home?

**ANSWER:** James T. Conner, Jr., Entomologist for the State College Extension Service, says that when a home is found to be infested with termites, the first step to take is to make a careful examination to determine the extent of the infestation. If it is very slight and localized, the removal of all old boards and pieces of wood near the foundation of the house may remove the infestation. Severe infestation may require the replacing of infested timbers with new material. Termites that are in the woodwork of buildings must stay in contact with the soil and moisture, Conner says, or they will die. It is therefore essential, he points out, that any possible contacts the termites may have with the soil and timbers of the building be eliminated.

**QUESTION:** What precautions can I take to keep Wildfire from infecting my tobacco plant bed?

**ANSWER:** Use of Certified seed is one of the first answers to this question, according to Howard R. Garriss, Extension Plant Pathologist, State College. Other suggestions he makes are: Don't save seed from plants infected with Wildfire, or from seeds of fields where Wildfire infection was se-

### Accused Terrorist In Chains



**HANDCUFFED TOGETHER,** legs shackled, Moshe Shmuel Horowitz (left) and Meir Feinstein hold up leg chains as they are brought to the military court in Jerusalem for trial. They are accused of discharging firearms and planting three bombs at the Jerusalem railroad station last October 30. Armed officers are around the men and armored vehicles and tanks are in the background. (International Exclusive)

### C OF C SETS MAY 1 TO START MEMBERSHIP DRIVE FOR THIS YEAR

The directors of the Jackson County Chamber of Commerce met in the office of the secretary at Lloyd Hotel Friday night to discuss the 1947 membership drive

and other matters coming before the board. Since the Sylva Merchants Association has voted to combine its efforts with the Chamber of Commerce there will be only one membership drive for the two organizations. The 1947 membership drive will start May 1st and will be completed as rapidly as possible.

There has been little response to the request by the Chamber of Commerce for the names of the people who are keeping, and plan to keep tourist this summer. So far only ten places have sent in their listings. This information is to be used on a printed directory and does not cost the individual anything. Those who have sent in their names are as follows: Sylva Hotel, Jarrett Springs Hotel, High Hampton Inn, Balsam Lodge, Glenn

vere; do not use old plant bed site if Wildfire was present in bed the year before, or unless old site and sidewalls are properly sterilized; do not allow tobacco trash of any kind to get into plant bed; boil old cover before using again; use Bordeaux treatment in plant beds; and rotate crops and plow under plant parts in field early.



### LOOKING AHEAD

By GEORGE S. BENSON  
President—Harding College  
Searcy, Arkansas

#### Bugs in the Budget

Did you know that income of the federal government for the next fiscal year will be nine times, maybe ten times, what it was in the boom period of 1929? It will be at least seven times the receipts the federal government had in 1939. Weak nation it would be, indeed, that could not balance a peacetime budget with the receipt side of the ledger at enormous peacetime highs.

Just to balance the budget during boom times, however, is not enough. We must retire debt and reduce taxes. Looking at another angle, the federal government wants to spend more than four times as much as it did in any year of the Thirties, when deficit spending was in the habit-forming stage. Has it now become fashionable for our government to spend all it can get? Have we forgotten that the more we spend the more we shall have to tax?

**Pet Projects**  
If we cannot, under favorable conditions of high employment and trade, get hold of ourselves long enough to retire our national debt and cut our taxes, at what future time do we expect to do so? Is our budgeting so out of hand that Congress cannot gain control over it? Or is the public thus unmindful of the trouble we're in for under a tax load required by the spending of \$37,500,000,000 annually.

Both the President and the Congress have given evidence of honest desire to keep the expenditure side of the budget down. But the pressures that are applied from every direction call for spending more money. As a people, we shall have to exert great moral fortitude at this time if we expect an about-face in a spending philosophy grown almost traditional. We need not complain to the government for being spendthrift, if at home we insist upon being spendthrift about our pet projects. Economy begins first at home.

**Examine Everything**  
Although the war has been over nearly two years, your government wishes to spend more in the next fiscal year than was spent during the whole of World War I. Of course, this is a dangerous era, and no one wants to hamstring our national defenses. The whole nation wants the occupation program to succeed. But more efficiency and the least possible waste of manpower and money should be the order of the day.

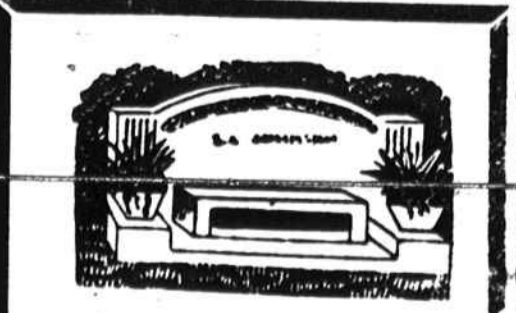
As late as November the War and Navy Departments were still employing more than a million civilians. Spending in every department, military or non-military, should be studied carefully. Everyone knows it is easier to keep on spending government money than to retrench. This is just as true of the national defense. Despite warnings of what may happen, Congress will do well to examine these expenditures.

Trimming down expenses is not an easy task for Congress. Snail's progress will be made unless the people make themselves heard. A big and wasteful budget now, carrying with it a tax penalty upon the enterprise of the people, could do much to start us down hill toward the kind of economy Russia has. Most Americans, I believe, would rather be allowed to spend their own money than have the government spend it for them.

Tourist Home, Clark's Place, Redwing Tourist Cabins, Patton's Tourist Home, Mrs. O. L. Cope, Williams Tourist Home.

The organization is very anxious to have a complete list of the tourist accommodations in the county to be included in the printed folder. The folder is to be printed around April 15 which makes it necessary that the organization have these parties at once. Remember, there is no cost to you for this service.

State 4-H Club Week, formerly called "Short Course," will be held at State College, August 18-23, it has been announced.



### Enhance the Resting Place

of your dear departed with a monument made of sturdy granite—handsomely inscribed. See our fine selection.

SYLVA GRANITE and MARBLE WORKS

### Beach Scene



**WEARING the latest in bathing suits,** Janet Ruth Crockett is ready to toss a huge ball across the sands at a Florida beach. (International)

At the average rate of tree planting practiced during the past twenty years, it will take six hundred years to provide this country with a comfortably plentiful lumber supply, according to the Forest Service of the U. S. Department of Agriculture.

## INSPECTOR REGAINS 19 LBS. ON RETONGA

**Had To Live On Soft Foods And Was Unable To Work For Eight Months, States Mr. Frye. Feeling Fine Now He Happily Praises Noted Medicine**



MR. H. S. FRYE

"No one could be more thankful to Retonga than I am, for I have regained 19 pounds of my lost weight and am on the job every day feeling fine," gratefully declared Mr. H. S. Frye, well-known resident of 421 Anthony Road, Ocala, Fla., and Inspector in the Sanitary Department of the City.

Retonga did not seem to get with a fine appetite, my food agrees with me so well I have regained 19 pounds, and I feel top top again, as if I had never been ill. Even sluggish eliminations are relieved. If anybody wants to know about Retonga just tell them to see me."

Retonga is intended to relieve distress due to insufficient flow of digestive juices, in the stomach, and I had so little strength I was all I could do to get about, much less work. Retonga may be obtained at any drug store. Retonga may be obtained at any drug store. Retonga may be obtained at any drug store.

**William B. Ballard**  
**Building Contractor**  
Houses Built Under F. H. A. Plan  
**CONCRETE WORK**  
SYLVA, N. C.

**PRESENTING**  
Under New Ownership  
**The New**  
**PACK SQUARE BEAUTY SCHOOL**  
7 1/2 N. W. Pack Square  
ASHEVILLE, N. C.  
STUDENT ENROLLMENT ACCEPTED DAILY.  
Visit, or write us for full information.

## Announces Details of \$20,000,000 Price Reductions

Details of the recently announced International Harvester policy of making price reductions to save users of our products approximately \$20,000,000 a year have now been worked out.

We have reduced prices on 163 models. These cover 12 basic models of farm tractors, 123 basic models of farm machines, 16 basic models of industrial tractors and engines, and 12 models of motor trucks, as well as certain motor truck attachments. The new lower prices are effective as of March 10, 1947.

These reductions were made not because of any decline in demand, but because we believe nothing is more important to this country than to lower the prices of the goods people buy.

While prices have not been changed on all products, we have made reductions wherever possible, in the amounts possible. Prices of many of our most popular products have been substantially lowered.

Altogether, more than half of the company's customers will be benefited by the reductions, which range from 1% to 23.8% and from \$2.50 to \$300 per item, based on list prices, F.O.B. Chicago.

Since the people have demanded that the government withdraw from price control in peacetime, the responsibility to keep prices in check is back where it should be—in the hands of business and industry. The business outlook makes it possible for us to move toward the goal of lower prices, and we have felt a duty to act as promptly as possible.

Our ability to maintain these lower prices will depend on the supply and price of materials we buy from others and on uninterrupted production at reasonable wage levels.

The prices listed here carry out our announced policy that "Any price is too high if it can be reduced."

### 25 More Types of Products

- Plows—52 models reduced from \$9.00 to \$20.00 (3% to 10.7%).
- Cultivators—13 basic models reduced \$5.00 to \$10.00 (4.5% to 7.4%).
- Listers and Middlebusters—7 models reduced \$5.00 in each case (2.8% to 4%).
- Corn Planters—4 basic models reduced \$5.00 in each case (3% to 4.8%).
- Grain Drills—11 models reduced \$14.25 to \$20.00 (4.4% to 6.3%).
- Mowers—2 basic models reduced \$4.00 and \$11.50 (2.5% and 5%).
- Sweep Rake—1 model reduced \$5.00 (5.5%).
- Pickup Hay Baler—1 model reduced \$75.00 (4.1%).
- Self-Propelled Combine—1 basic model reduced \$122.50 (3.4%).

	<b>FARM TRACTORS</b> 12 Models Reduced \$10 to \$134 (up to 10.6%)
	<b>MOTOR TRUCKS</b> 12 Models Reduced \$50 to \$300 (1.9% to 3.6%)
	<b>FARM MACHINES</b> 123 Models Reduced \$2.50 to \$122.50 (1.9% to 23.8%)
	<b>INDUSTRIAL TRACTORS (Crawler)—4 Models</b> Reduced \$35 to \$50 (1.0% to 1.6%)

- Enlarge Cutters—3 models reduced \$22.75 in each case (4.8% to 7.1%).
- Enlarge Harvester—1 model reduced \$33.75 (3.9%).
- Hammer Mills—2 models reduced \$5.00 in each case (1.9% and 3%).
- Lime Spreader—1 basic model reduced \$2.50 (4.9%).
- Power Loader—1 model reduced \$25.50 (8.9%).
- Manure Spreader—1 model reduced \$13.00 (3.5%).
- Milker Units—2 models reduced \$12.00 and \$17.00 (14.4% and 18.4%).
- Milker Vacuum Pumps—2 models reduced \$17.00 in each case (11.5% and 19.6%).
- Portable Milker Vacuum Pumps—2 models reduced \$17.00 in each case (11.3% and 11.7%).
- Stainless Steel Milker Pails—2 models reduced \$5.00 and \$10.00 (18.5% and 23.8%).
- Cream Separators—4 models reduced \$13.25 in each case (8% to 10.4%).
- Tractor Trailer—1 basic model reduced \$12.75 (5.5%).
- Milk Coolers—5 models reduced \$8.00 to \$18.00 (1.9% to 4.3%).
- Industrial Tractors (Wheel)—4 basic models reduced \$19.00 to \$56.00 (1% to 3.4%).
- Industrial Power Units—8 models reduced from \$10.00 to \$150.00 (2.3% to 11.4%).
- Motor Truck Attachments—7 items reduced from \$6.25 to \$268.00, including a change in specifications on two items.

**Any price is too high if it can be reduced**



### Lay in Your New Supply of

**HAY • GRAIN • FEED**  
**and FERTILIZERS**

● Spring Is Here And Summer Is On The Way . . . This is the time to lay in your season's supply of feeds, grain, hay and fertilizer so that when crop making is rushing you won't be bothered with having to make a trip for them. We have full supplies of finest qualities available. See us the next time you are in Sylva.

## Farmers Federation

Phone 139 FRED COPE, Manager Sylva, N. C.

## INTERNATIONAL HARVESTER