

Jarrett Named To Head Tuckasegee Association Drive For Funds For Wake Forest Convention's Program

The Convention's Program for Wake Forest College to raise one and one-half million dollars through the Baptist churches of North Carolina, for relocation and enlargement at Winston-Salem, is meeting with great enthusiasm and success in every section of the state, according to the Director, Horace Eason.

Organizational work has been completed in Tuckasegee Association. R. F. Jarrett of Dillsboro is chairman, and the following compose the Associational Committee: Rev. W. N. Cook, Webster; Rev. B. S. Hensley, Rt. 1, Sylva; Dr. H. P. Smith, Cullowhee; C. A. Wilson, Gay; Johnny Hyatt, Jr., Whittier; Alvin Fullbright, of Webster.

Cooperating with the Associa-

tional Committee is a committee in each church in the association which is known as a Convention Committee. The following churches and Convention Committees have been named to date:

BALSAM—Phil Brooks, chairman; C. A. Bryson, J. O. Beck, all of Balsam.

BALSAM GROVE — Lonnie Morgan, Chairman, John Cook, of Cowarts.

BARKERS CREEK — W. R. Atchley, Chairman; Kelly Bradley, of Rt. 1, Whittier.

BIG RIDGE — David Pruett, Chairman; H. H. Hooper, of Glenville.

BLACK MOUNTAIN — W. T. Rogers, Chairman; L. G. Mills, Mrs. Etta May Ashe, of Cullowhee.

BUFF CREEK — R. A. Mull, Rt. 1, Sylva, Chairman; W. H. Snyder, Rt. 1, Sylva.

CASHIERS — John Will Hooper, Chairman; Edgar Fowler, of Cashiers.

CULLOWHEE — L. A. Buchanan, Chairman; Dr. H. P. Smith, John Crawford, George N. Crawford, all of Cullowhee.

CATHERINE'S CHAPEL — Davis Hooper, Chairman; Mrs. Leila Phillips, of Cowarts.

DIX CREEK — Mrs. Jarvis Turpin, Sylva, Chairman; Charles Wilkie, Dillsboro.

EAST FORK — Early Deitz, Chairman; Richmond Deitz, of Greens Creek.

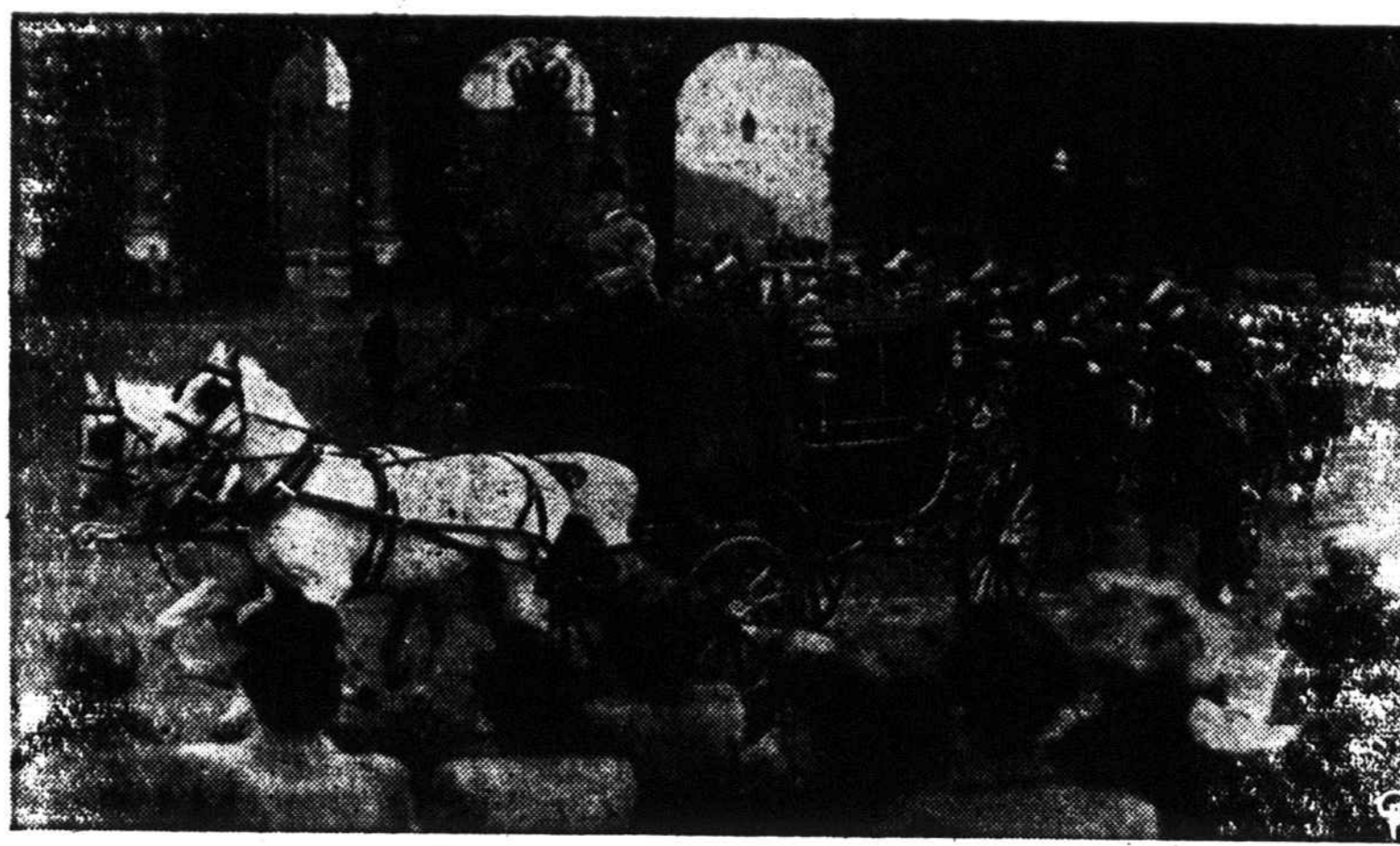
EAST SYLVA — Dewitt Beasley, Chairman; F. L. McKneely, of Sylva.

GREEN'S CREEK — G. L. Green, Chairman; Mrs. Julia Buchanan, Greens Creek.

HAMBURG — Clayborn Bryson, Chairman; Gordon Jennings, Sam Pressley, Mrs. Viola Bryson, all of Glenville.

JARRETT MEMORIAL — R. F.

STAGE REHEARSAL FOR ROYAL WEDDING PARADE



TO MAKE CERTAIN that there will be no slip-ups in time and routes followed, a rehearsal of the wedding parade for Princess Elizabeth and Lieut. Philip Mountbatten is staged in London. While hundreds of spectators, who may not be able to see the real thing, crowded the streets, empty carriages with an escort of household cavalry staged a try-out trip from Buckingham Palace to Westminster Abbey, where the royal couple will be wed. The procession was emerging from Admiralty Arch when photographed. (International)

Jarrett, Dillsboro, Chairman; C. A. Snyder, Joe Wilkie, of Dillsboro.

HEADY MOUNTAIN — Frank Rice, Chairman; J. Van James, Cashiers.

JOHN'S CREEK — Mrs. Etta Woods, Chairman; Lloyd Hooper, Walter Hooper, of Cowarts.

HYATT'S CHAPEL — H. S. Queen, Chairman; Toy Gunter, Rt. 1, Whittier.

LONG BRANCH — Miss Elsie Wilkie, Chairman; W. E. Robertson, Dillsboro.

LITTLE SAVANNAH — Claud Morgan, Chairman; Norman Frizell, Bill Lewis, of Webster.

LOCUST FIELD — L. L. Pangle, Chairman; Richard Sutton, of Dillsboro.

LOVEDALE — Will Painter, Chairman; Walter Ashe, Mack Ashe, of Sylva.

MOSES CREEK — L. E. Hooper, Chairman; Roscoe Hooper, Vance Hooper, East LaPorte.

MOUNT PLEASANT — Edd Cogdill, Chairman; G. C. Crawford, of Balsam.

NEW SAVANNAH — John C. Jones, Chairman; Sam C. Buchanan, Gay.

OCHRE HILL — Guy Sutton, Chairman; Joe Mills, Sylva.

OLD SAVANNAH — General Sutton, Greens Creek, Chairman; Hubert Potts, Dillsboro.

OAK RIDGE — Sterling Melton, Chairman; Mitchell Melton, Argura.

SHOAL CREEK—Johnny Hyatt, Chairman; Edd Oxner, of Whittier.

SCOTTS CREEK—D. B. Bryson, Chairman; Vernon Cope, B. E. Harris, Sylva.

SYLVA—Edwin Allison, Chairman; James Buckner, Claud Jones, Sylva.

SOL'S CREEK—Jesse Brown,

Chairman; Manley Brown, Argura.

SPEEDWELL — Mack Pressley, Chairman; Mrs. Bonnie Hopkins, Speedwell.

TUCKASEEGEE — Bob Powell, Chairman; J. J. Hooper, Baxter Houston, J. H. Simpson, all of Tuckasegee.

TROUT CREEK — Claud Conner, Chairman, Tuckasegee.

WEBSTER — Ernest Penland, Chairman; Alvin Fullbright, of Webster.

WILKESDALE — Bob Higdon,

Box 127, Sylva.

ZION HILL — Calvin Wilson, Chairman; G. C. Turpin, of Gay.

The goal for Tuckasegee is \$10,000. The Chairman, Associational Committee and Convention Committees feel that this amount will be raised.

All churches are asked to make their checks to M. A. Huggins, Treasurer, and mail checks to Mr. M. A. Huggins, Recorder Building, Raleigh, N. C. Please write on each check, "For Convention's Program for Wake Forest."

Statement

PAN-AMERICAN LIFE INSURANCE COMPANY

NEW ORLEANS 12, LA.
Condition December 31, 1946, As Shown by Statement Filed
Amount of Capital paid up in cash, \$ 585,600.00
Amount of Ledger Assets December 31st of previous year, \$65,960,544.23; Decrease of Capital during year, \$100,800.00; Total, \$ 65,859,744.23
Premium Income, \$12,810,273.27; Miscellaneous, \$3,864,642.72, Total, \$ 16,674,915.99
Disbursements—To Policyholders, \$4,181,334.31; Miscellaneous, \$4,571,331.43; Total, \$ 8,752,665.74
Business written during year—Number of Policies 13,923; Amount, \$ 51,188,392.00
Business in force at end of year—Number of Policies, 105,007; Amount, \$283,442,192.00



Enhance the Resting Place

of your dear departed with a monument made of sturdy granite — handsomely inscribed. See our fine selection.

SYLVA GRANITE
and
MARBLE WORKS

Statement

PRUDENTIAL INSURANCE COMPANY OF AMERICA*

NEWARK, N. J.
Condition December 31, 1946, As Shown by Statement Filed.
Amount of Ledger Assets December 31st of previous year, \$6191,968,445.52; Increase of Capital during year, \$..... Total, \$6191,968,445.52
Premium Income, \$866,046,270.95; Miscellaneous, \$308,726,131.06; Total, \$1,174,772,402.01*
Disbursements—To Policyholders, \$448,636,249.27; Miscellaneous, \$269,042,087.90; Total, \$ 717,678,337.17*
Business written during year—Number of policies 2,840,281; Amount, \$4159,026,160.00
Business in force at end of year—Number of Policies 35,571,336; Amount, \$6071,606,707.00

Assets
Value of Real Estate (less amount of encumbrances) \$ 58,518,175.36
Mortgage Loans on Real Estate \$ 979,163,328.80
Loans made to Policyholders on this Company's Policies assigned as collateral \$ 239,766,127.49
Premium notes on Policies in force (of which \$..... is for first year's premiums) \$ 12,525,343.33
Net Value of Bonds \$5196,581,201.45
Net Value of Stocks \$ 99,945,069.15
Cash \$ 41,116,983.43
Interest and Rents due and accrued \$ 49,086,196.04
Premiums uncollected and deferred \$ 122,884,408.59
All other Assets, as detailed in statement \$ 31,093,591.99
Total \$6830,680,425.63
Less Assets not admitted \$ 1,138,176.62
Total admitted Assets \$6829,542,249.01*

Liabilities
Net Reserve, including Disability Provision \$6193,861,827.00
Present value of amounts not yet due on Supplementary Contracts, etc. \$ 283,180,608.00
Policy Claims \$ 40,828,347.34
Dividends left with Company at interest \$ 64,977,897.45
Premiums paid in advance \$ 37,349,294.72
Unearned Interest and Rent paid in advance \$ 94,347.60
Commissions due to Agents \$ 1,773,622.15
Estimated Amount payable for Federal, State and other Taxes \$ 16,412,166.61
Dividends due Policyholders \$ 2,274,263.41
Amounts set apart for future dividends \$ 74,031,900.00
Accident and Health needs \$ 10,794,750.80
All other Liabilities, as detailed in statement \$ 18,208,846.94
Total amount of all Liabilities, except Capital \$6743,787,872.02
Unassigned funds (surplus) \$ 85,754,376.99
Total Liabilities \$6829,542,249.01

Business in the State of North Carolina During 1946

ORDINARY GROUP INDUSTRIAL
No. Amount No. Amount No. Amount
Policies on the lives of citizens of said State in force December 31st of previous year, 27411 \$61,011,303.00 38 \$17,873,480.00 24422 \$7,117,825.00
Policies on the lives of citizens of said State issued during the year, 2684 \$ 6,159,305.00 3 \$13,972,133.00 1563 \$ 539,170.00
Total 30095 \$67,170,608.00 41 \$31,845,613.00 25985 \$7,656,995.00
Deduct ceased to be in force during year, 287 \$ 3,509,919.00 3 \$ 5,647,675.00 875 \$ 292,856.00
Policies in force December 31st, 29,808 \$63,660,689.00 38 \$26,197,938.00 25110 \$7,364,139.00
Losses and Claims unpaid December 31st of previous year, 35 \$ 85,495.71 15 \$ 31,761.07 68 \$ 6,303.05
Losses and Claims incurred during year, 295 \$ 874,290.79 98 \$ 138,826.96 349 \$ 83,907.35
Total 330 \$ 959,786.50 113 \$ 170,624.03 417 \$ 90,210.40
Losses and Claims settled during year, in full, \$.....; by compromise, \$5,000; by rejection, \$.....
287 \$ 806,350.82 101 \$ 154,539.03 327 \$ 85,249.46
Losses and Claims unpaid December 31st, 43 \$ 153,435.68 12 \$ 16,085.00 90 \$ 4,960.94
Premium Income—Ordinary, \$1,867,604.36; Group, \$556,882.81; Industrial, \$265,635.37; Total, \$2,690,122.54.
President, Carrol M. Shanks. Secretary, Frederick H. Groel
Treasurer, H. W. Tatlock. Actuary, Valentine Howell
Home office, 763 Broad St., Newark, N. J.
Attorney for Service: WILLIAM P. HODGES, Commissioner of Insurance, Raleigh, N. C.
*Includes A. & H. Dept. (Seal)

I, WILLIAM P. HODGES, Commissioner of Insurance do hereby certify that the above is a true and correct abstract of the statement of the Prudential Insurance Company, of Newark, N. J., filed with this Department, showing the condition of said Company on the 31st day of December, 1946.
Witness my hand and official seal the day and date above written.
WM. P. HODGES, Commissioner of Insurance.

Timber cut from the National forests in the quarter ending September 30 totaled 1,270,000,000 board feet, an increase of 24 million board feet above the amount cut in the same quarter last year, the Forest Service of USDA, has announced.



CLEAN ECONOMICAL LOW COST LONG LIFE DUAL WALL OR FLOOR REGISTER
Listed by UNDERWRITERS LABORATORIES, INC.
Manual or Automatic Control
SOSSAMON'S Furniture Company
Phone 57 Sylva, N. C.

CHRISTMAS LAY-A-WAYS



PAY DOWN WHAT YOU PLEASE
ONLY 30 MORE SHOPPING DAYS

Be Wise! Shop Early! Get Your Choice!

| | | |
|---|---|---|
| WATCHES— Ladies' Wrist Watches Men's Wrist Watches Men's Pocket Watches All Guaranteed | RINGS— Wedding Sets Men's Wedding Bands Ladies' Wedding Bands Men's Birthstone Rings Ladies' Birthstone Rings Masonic Rings Ladies' Engagement Rings Children's Rings W. O. W. Rings Special Orders for Diamonds or any other type ring. | LADIES JEWELRY— Earbobs Pin & Earbob Sets Necklaces—all kinds Pearls Pins Bracelets—all kinds Compacts Billfolds Necklace Chains Watch Bands |
| MISCELLANEOUS Pen and Pencil Sets Sterling Silver Silver Plated bowls, ashtrays, etc. Baby Locketts & Baby Bracelets Coffe Makers — Parker 51 Pens Book Ends — Baby Cups Derylite Salt & Pepper Shakers | MEN'S JEWELRY Bracelets Tie Sets Billfolds Masonic Pins Watch Bands Cigarette Cases Cigarette Lighters Razors | |

SOSSAMON'S JEWELRY DEPARTMENT

SOSSAMON'S FURNITURE CO.

SYLVA, N. C.

"Your Christmas Gift Store"