

Plans Made for Religious Emphasis Week at Cullowhee

Cullowhee—Preliminary plans have been made, and committees were named Tuesday for the annual Religious Emphasis Week at Western Carolina Teachers college, to be observed this year from February 2 through February 6.

The Rev. James B. Fekken, pastor, West Minister Presbyterian church, Charlotte, will be guest speaker during the week. In addition to addressing the entire student body and faculty members at the college's general assembly Tuesday afternoon, February 3, he will hold daily "morning watch" meetings, 7:30-8:00 a. m., in the parlor of Moore dormitory, and will conduct daily programs at 7:30 p. m. in the student Union building. His topics have not been announced, but numerous suggestions have been made.

Religious Emphasis Week has been observed by WCTC every year since 1941, when Miss Anne Albright, dean of women, presented the idea to the pressession conference, and it was approved. The annual observance has been

popular with the student body; last year they voted overwhelmingly to continue it. This year, as previously, a large number have indicated their willingness to participate.

Gene Hennemann, Fredericksburg, Tex., is chairman of the Religious Emphasis Week committee. Sub-committees are listed below:

Publicity—Mrs. Lillian Buchanan, Luther R. Taff, faculty adviser.

Newspaper publicity—Al Booze, Cullowhee; Mr. Hennemann; Vernelle Hall, Leicester.

Campus publicity—Martha Ellen Lynch, Gastonia. Library—Bill Easterling, Hamlet; Phyllis Bowen, Poster—Herbert Foster, Lexington; Jimmy Monroe.

Music—Genn Ruff, Faculty adviser. June Wright, Bryson City; Carl Painter, Canton; Kathleen Moss, Hayesville; Helen Hill.

Social—Miss Albright, faculty adviser. Loe Alley, Norfolk, Va.; Charlotte Fields; Betty Brown, Leicester.

Room arrangement and ushers—Miss Albright, faculty adviser. Edwin Allman, Webster; Joe Turner, Waynesville; Bobby Terrell, Sylva; Foyd Cunningham.

Morning watch—David Walker, Webster Groves, Mo.; Miss Lynch; Anna Duke Wheelis; Paul Monroe, Tabor City; Carolyn Brown. Evening program—Miss Hall. Photograph—Jimmy Legette, Williamston.

Senior Class of Sylva Hi Sponsors Amature Show

The Senior class of Sylva high school will sponsor an amature show at the Sylva elementary school auditorium, Thursday night, January 22. A prize will be awarded the best performer.

All persons are eligible to enter the contest. Those interested should see Mr. W. H. Crawford.

Funeral For Mrs. Conner Held In Hayesville

Funeral services for Mrs. Claude Conner, 35, of Tuckaseegee, were held in Hayesville, Sunday, January 11.

The deceased, a native of Clay county, had made her home in Jackson county for the past several years.

Surviving are the husband, seven daughters, two sons, and other relatives in Hayesville.

Services at The Churches

Sylva Methodist
(The Rev. W. Q. Grigg, Pastor)
Sunday school will meet at 10 a. m., Gudger Crawford, superintendent.

11 a. m. Rev. R. T. Houts, Jr., of Cullowhee will be the guest minister for the morning worship. For his sermon subject he will use "Faith is the Answer."

6:30 p. m., Youth Fellowship.
Wednesday 7:30 p. m. Choir rehearsal.

Sylva Baptist
(The Rev. C. M. Warren, Pastor)
Sunday school at 10 a. m., Mr. Carl Corbin, Supt.

11 a. m. The pastor will use for his subject, "A Jealous God." Deut. 5:9.

B. T. U. at 6:30 p. m., Miss Hattie Hilda Sutton, Director.

7:30 p. m. The pastor will use for his sermon subject, "A Reasonable Religion." Micah 6:8.

Tuesday, 7:30 p. m. Prayer meeting.

Fri., 7:30 p. m. Choir rehearsal. Each Monday at 10:30 a. m. the Baptist Ministers' Conference meets here.

Cullowhee Baptist
(The Rev. Mark R. Osborne, Jr., Pastor)

9:50 a. m. Sunday School
11 a. m. Morning worship.

6 p. m. Training Union.
Wednesday—7:30 p. m. Sunday school lesson pre-view.

Friday—7:15 p. m. Choir rehearsal.

Cullowhee Methodist
(The Rev. R. T. Houts, Jr., Pastor)

10 a. m. church school.

11 a. m. Morning worship Rev. W. Q. Grigg of Sylva Methodist will be guest minister and use for his sermon subject, "Is It Right Or Wrong?"

6:30 p. m. Youth Fellowship.

Sylva Presbyterian
(The Rev. W. H. Wakefield, Pastor)

Services held in Episcopal church.

10:00 a. m. Sunday School. Mr. M. C. Cunningham, Supt.

11:05 a. m. Sermon subject, "Christ—the Only Answer."

7:30 p. m. Sermon subject, "Lovest Thou Me More Than These."

Scotts Creek Baptist
(The Rev. B. S. Hensley, Pastor)

10 a. m. Sunday School.

11 a. m. Morning worship by the pastor.

6:30 p. m. Baptist Training Union
8 p. m. Evening worship.

Cashiers Baptist
(Rev. Edgar Willix, Pastor)

Sunday School each Sunday at 10 a. m.

Worship service each 1st and 3rd Sundays at 11 a. m. and 7:30 p. m.

ST. JOHN'S CATHOLIC CHURCH

Schedule of Masses

Bryson City, 1st and 3rd Sunday 8 a. m.

Canton, 5th Sunday 8:00 a. m.

Cullowhee, 1st Wednesday 7:00 a. m.

Fontana Dam, 2nd Saturday 8:00 a. m.

Franklin, 2nd Sunday 8:00 a. m.

Highlands, 3rd Saturday 8:00 a. m.

Murphy, 1st Saturday 8:00 a. m.

Sylva, 4th Sunday 8:00 a. m.

Waynesville, Every Sunday 11:00 a. m.

Glenville Baptist
(Rev. Hoyt Hadaway, Pastor)

10 a. m. Sunday School.

11 a. m. Morning worship.

7 p. m. B.T.U.

8 p. m. Evening worship.

Lovedale Baptist Church
(Rev. G. E. Scruggs, Pastor)

10 A. M. Sunday School.

11 A. M. Worship Service.

7:30 P. M. Worship Service.

Tuckaseegee Baptist
(Rev. Edgar Willix, Pastor)

Sunday Schools each Sunday at 10 a. m.

Worship service at 11 a. m. and 7:30 p. m. each 2nd and 4th Sundays.

'Household Hint
If you find your broiler and oven lining spattered with grease, try putting a shallow dish filled with ammonia in each oven compartment, close the doors, and leave for awhile. The ammonia fumes will help loosen the grease, making the final cleaning much easier.

Tax Listing

For The Year 1948

IN THE VARIOUS TOWNSHIPS IN JACKSON COUNTY

Begins January 12, 1948

ALL COUNTY TAXES MUST BE

LISTED IN JANUARY

The Machinery Act of 1939, requires that all property, real and personal, shall be listed, or listed and assessed, as the case may be in accordance with ownership and value, and that poll tax shall be listed as of the first day of January each year. It also requires that penalty be imposed on all who fail to list.

Books Will Be In Townships Until February 1st.

BARKERS CREEK TOWNSHIP

List Taker Mr. Ben Jones
Dicks Creek School House January 17
Mrs. G. S. Bumgarner's Store Wilmont, N. C. January 19,20
Mr. Jewel Revis' Store January 21
Mr. Grover Davis' Store January 22

CANEY FORK TOWNSHIP

List Taker, Mr. J. C. Shular
Moses Creek Church January 12,13
Luther Stephens' Store January 14
John Creek School House January 15,16
Brasstown Church January 17
Balsam Grove January 19,20

CANADA TOWNSHIP

List Taker, R. J. Shelton
Oak Ridge January 12
Sol's Creek January 13
Chas. Creek January 14
Wolf Creek January 15
Wolf Mountain January 16
Rock Bridge January 17
R. J. Shelton's Home Jan. 19,20,21,22,23,24

CASHIERS TOWNSHIP

List taker, Mrs. Hortense Bryson
J. C. Passmore's Store January 12,13,14
Crate McCall's Store January 16,17,19
Mrs. Willie McCall's Home January 20
Texico Service Station January 22,23,24
White Side Cove January 26
Mr. H. A. Pell's Home January 29,30,31

CULLOWHEE TOWNSHIP

List Taker: Robert Shelton
Bucks' Soda Shop January 12,13,14,15,16,17
Mr. Zollie Fox's Store January 22,23,24

DILLSBORO TOWNSHIP

List Taker, Mrs. P. W. Kincaid
Mrs. P. W. Kincaid's Home
January 12,13,14,15,16,17
Old Mill Inn January 19
Leatherwood's Cabins January 20
Mrs. P. W. Kincaid's Home
January 21,22,23,24
Mrs. P. W. Kincaid's Home
January 26,27,28,29,30,31

GREENS CREEK TOWNSHIP

List Taker, G. L. Green
L. C. Buchanan's Store January 12,17
Savannah School House January 16
Greens Creek Post Office January 21
G. L. Green's Home January 19,23,27
Ebb Hall's Store January 14,24

HAMBURG TOWNSHIP

List Taker, Frank D. Bryson
Davis Store (Big Ridge) January 16
Norton Post Office January 21

Holden's Store January 22
Taylor's Store January 23
Monteith's Store January 17,24,31
Frank D. Bryson's Home
January 12,13,14,15,19,20,26,27,28,29,30

MOUNTAIN TOWNSHIP

List Taker, Pearle Stewart
Pearle Stewart's Home
January 12,13,14,19,20,21
White Rock Church January 22
Mrs. Julia Stewart's Home January 26
Pearle Stewart's Home
January 26,27,28,29,30

QUALLA TOWNSHIP

List taker, W. L. Enloe
W. L. Enloe's Home January 12,13
Reagan's Store January 14,15,16
Qualla School Building January 19,20,21
Gateway Store January 22,23,24,26
John Battle's Store, (Whittier)
January 27,28,29
Store, (Wilmont) January 30

RIVER TOWNSHIP

List Taker, Fred C. Smith
Fred C. Smith's Home
January 12,13,19,21,26,27,31
O. D. Moses Store January 16,17
East La Porte January 24
Power House January 20
Jim Middleton's Mill January 30

SAVANNAH TOWNSHIP

List Taker, Homer Jones
Hyatt's Store January 16
A. C. Wilson's Store January 17,24,30
Community Building, (Gay) .. January 12,15,30
East Fork Church January 19,23
C. L. Buchanan's Store January 26

SCOTTS CREEK TOWNSHIP

List Taker, Mrs. Allen Sutton
George Knight's Store January 14,21
W. O. Robinson's Store January 15,22
Lewis Blanton's Store January 16,23

SYLVA TOWNSHIP

List Taker, Mrs. Ollie Banks
Allison's Hardware .. January 12,13,14,15,16,17
Blanton's Store, (Beta) January 19
Allison's Hardware January 20,21,22,23,24
Russell-Middleton's Filling St. Jan. 26
Allison's Hardware January 27,28,29,30,31

WEBSTER TOWNSHIP

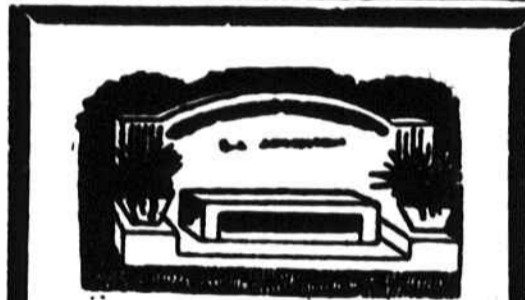
List Taker, W. N. Cook
W. T. Ashe Store January 15,16
Paul Cowan's Store January 17,19
Mrs. Texas Cole Home January 20,21
Pott's Chicken House January 22,23
Cannon's Store January 24,26,27,28

Please come Prepared to Make your Farm Report

Jennings A. Bryson

COUNTY TAX SUPERVISOR

GLENN FUNERAL HOME
AMBULANCE SERVICE
Phone 65 Sylva, N. C.



Enhance the Resting Place

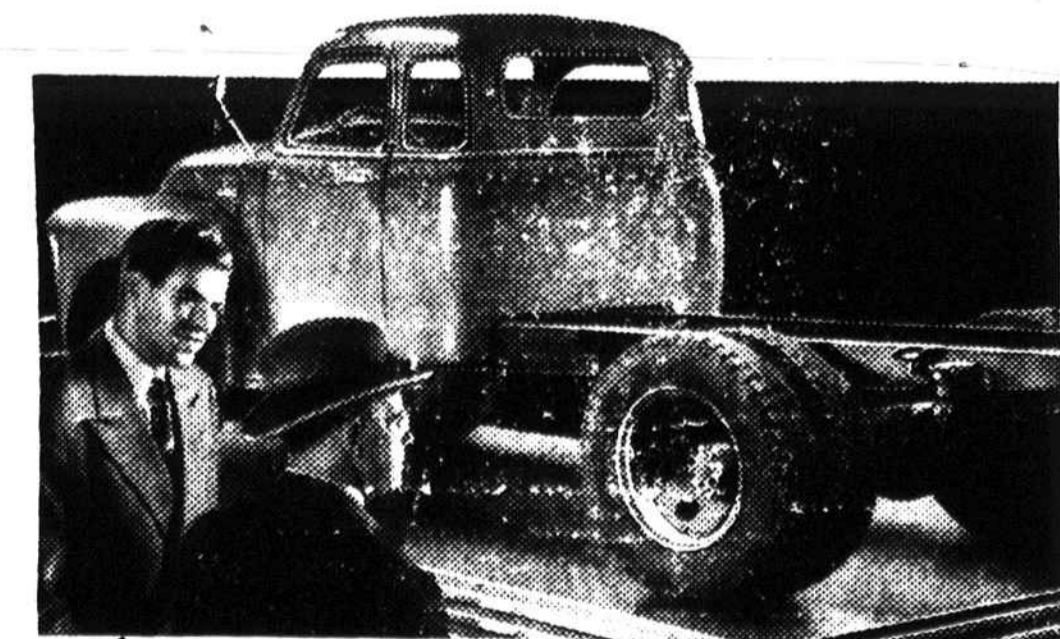
of your dear departed with a monument made of sturdy granite — handsomely inscribed. See our fine selection.

SYLVA GRANITE
and
MARBLE WORKS

DO YOU PLAN TO BUILD?
For as little as 10 Per Cent Down I can furnish a lot and build you a home under the F.H.A. Plan. Will Be Glad to Arrange Details for Loan
WILLIAM B. DILLARD
General Contractor
Concrete Work — Gravel For Sale

For a Stronger Sturdier Chassis

GET A GMC



GMC Trucks have always been built "to take it." Today they are equipped with chassis structure that offers greater strength and stamina than ever before. Axles are heavier and huskier. Springs are stronger. Frames are tougher. Brakes, steering, transmissions, clutches . . . all have

been improved to give you easier handling, surer control and day-in, day-out service on the most rugged hauling jobs. There's a new GMC . . . light, medium or heavy duty . . . exactly suited to your type of truck work. See us for complete information . . . and all your truck needs.

HOOVER MOTOR CO.
Main Street Sylva, N. C.