

HERALD WANT ADS

VOICE INSTRUCTION

— Call —
Miss Alice Weaver
Telephone 241-W

Martel Mills Noses Sylva By 7-6 Count
Squeeze Play In 10th Accounts For Victory

MARTEL MILLS, May 19—The Sylva American Legion Baseball Club dropped a 7-6 10-inning game to Martel Mills here today. Martel's winning run came when Edmonds squeezed Bill Horne home from third with none out in the tenth. Martel jumped on Luther Norton for five runs in the first on six singles and two errors, only one of their runs being earned. Warren Deyermond replaced Norton

Sports

with one man out in the first and pitched four hit ball the rest of the way, although he was credited for the loss because Sylva went ahead by one run in the top of the ninth.

Martel used four pitchers and all but one was touched for three hits or more as Sylva outthit the Industrial leaguers 12-10. Ben Dillard with 3 for 5 and Jack Cunningham with 3 for 6 led the losers while Adams, Franklin, DeWeese and Edmonds had 2 each for the winners.

SYLVA	AB	R	H	PO	A
Warren 2b	5	0	0	1	6
Rector cf-1b	6	1	2	10	0
Deyermond 1b-p	5	1	0	1	3
Dillard 3b	5	2	3	2	2
Jack Cunningham c	6	2	3	7	1
Duke ss	5	0	1	6	2
Baker lf	3	0	0	0	0
Bryson rf	3	0	1	0	0
Jim Cunningham rf	2	0	1	0	0
Norton p-cf	3	0	1	0	0

MARTEL MILLS	AB	R	H	PO	A
Adams 1b	3	2	2	5	0
Cooksey c	5	1	1	14	0
Robinson 2b-p	5	1	0	5	2
Franklin ss	5	0	2	0	2
Fox rf	5	1	0	2	0
Horne cf	5	2	1	1	0
DeWeese 3b	5	0	2	2	1
Edmonds lf	5	0	2	1	0
Israel p	2	0	0	0	0
Brown p	1	0	0	0	0
White p	1	0	0	0	1

42 7 10 30 6
Sylva 002 000 004 0-6
MARTEL 500 000 001 1-7
Errors—Adams, Fox, DeWeese, Edmonds, Israel, Warren 2, Deyermond, Dillard, Jack Cunningham, Duke, Bryson 2. Runs batted in, Franklin 3, Edmonds 2, Jack Cunningham 2, Duke, Jim Cunningham. Two base hit, Jackson Cunningham. Stolen bases, Deyermond. Left on base, Sylva 15; Martel 9. Earned runs, Sylva 3; Martel 1. Bases on balls-off Deyermond 2, Israel 2, Brown 3, White 2. Strikeouts—Deyermond 7, Israel 6, Brown 4, White 1. Hits-off Norton 6 in 1-3 (5 runs), Deyermond 2-31.

Legionaries Trample

(Continued from page 2)

Hit by pitcher — by L. Tucker (Sumner), by D. Tucker (Dillard). Umpires—Painter and Deyermond. Time of game—2:18.

Sunday's Game:	AB	R	H	PO	A
Sylva	5	1	0	6	0
Olson cf-1b	4	0	1	0	2
Price ss	5	2	2	1	2
Dillard 3b	3	2	1	6	0
Lee 1b	0	0	0	1	1
Baker c	0	0	0	0	0
Warren cf	5	1	1	1	0
Phillips rf	4	1	1	0	0
Norton lf	5	1	1	0	2
Williamson c-cf	4	2	2	3	3
Duke 2b	4	0	1	0	1
Deyermond p	39	10	10	27	11

AB	R	H	PO	A	
Brookshire	0	1	0	0	20
Taylor rf	4	1	1	1	0
Ridge 3b	3	0	0	1	1
Lowe lf	4	0	1	0	0
L. Tucker c-p	2	2	1	0	2
Tuggle cf	3	0	1	6	0
Bishop ss	4	0	0	1	3
Owens 2b	4	0	0	4	3
Brooks 1b	1	0	0	2	0
Baldwin c	2	0	0	2	0
Pack p-1b	2	1	1	7	1

29 4 5 24 10
AB R H PO A
Brookshire 0 1 0 0 0 20-4
Sylva 3 0 5 0 1 0 10 x-10
Errors—Brooks, Bishop 4. Ridge 1, Tucker 1. Runs batted in—Dillard 1, Lee 2, Williamson 2, Deyermond 1, Taylor 2, Tucker, Bishop. Two base hits—Lee, Pack. Three base hits—Duke. Home runs—Dillard, Tucker, Taylor. Sacrifice—Price. Stolen bases—Dillard, Williamson, Duke. Left on base—Sylva 7, Brookshire 3. Earned runs—Sylva 5, Brookshire 4. Bases on balls—off Deyermond 3, Pack 2, Tucker 1. Strikeouts—Deyermond 9, Tucker 1. Hits off Pack 4 in 2 (8 runs) (none out in 3rd). Tucker 6 in 6 (2 runs). Losing pitcher—Pack. Wild pitch—Tucker. Hit by pitcher—by Deyermond (Tucker 2). Umpires—Painter and Davis. Time of game—2:10.

4 in 9 2-3 (2 runs), Israel 3 in 3 (2 runs). Brown 1 in 4 (0 runs), White 5 in 1 (4 runs), Robinson 3 in 2 (0 runs). Winning pitcher, Robinson. Losing pitcher, Deyermond. Wild pitch, Israel. Umpires, DeBruil and Jones. Time of game 2:31.

New HEAVY-DUTY TRUCKS Now!



Looking for a truck for rugged duty and heavy hauling? Then look at heavy duty GMCs. These big trucks are built to handle big pay loads... designed to give you real heavy duty performance with famous GMC efficiency, economy and long life. Many heavy duty models are available for quick delivery... come in!

GMC-BUILT FOR HEAVY HAULING

Massive air brakes that go up to as much as 7 inches in width and 21 inches in diameter. Main and auxiliary transmissions that combine with rear axles to provide as many as 15 forward speeds. All models available with main transmissions of easy shifting Synchro-Mesh design. Heavy duty axles in types for every type of truck and every kind of heavy-hauling service. Ball Bearing steering that gives heaviest models passenger car handling ease.



GASOLINE • DIESEL

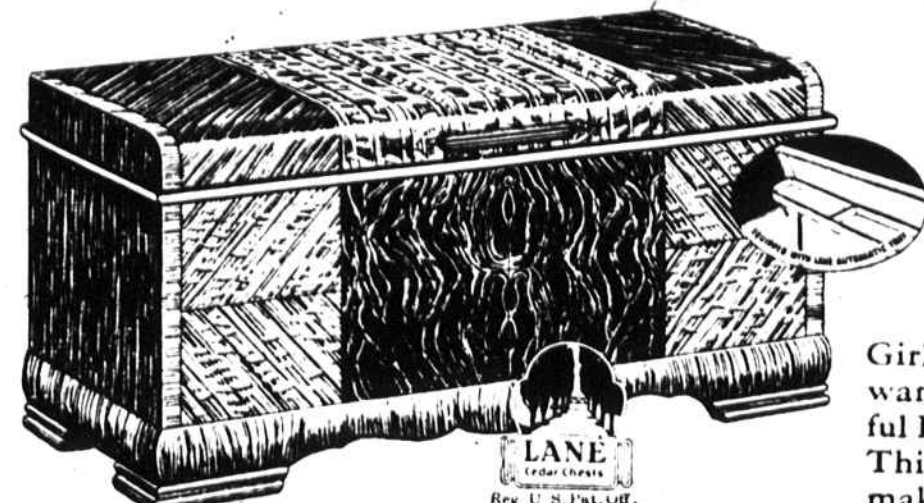
HOOPER MOTOR CO.
MAIN STREET SYLVA, N. C.

Make Graduation Her Shining Hour

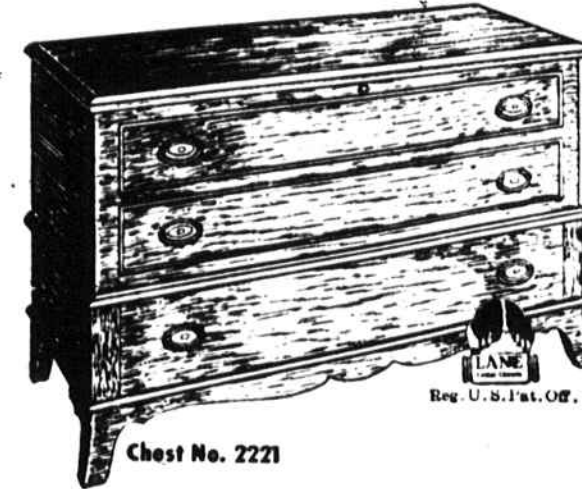


GIVE HER A LOVELY Lane Cedar Hope Chest

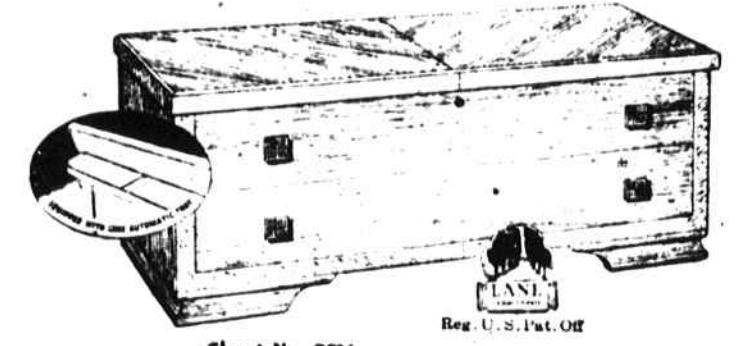
As advertised in SEVENTEEN and LIFE



For the Girl Graduate, Chest No. 2231 above, \$59.95



Chest No. 2221



Chest No. 2216

Gift of Her Heart's Desire

Girl grads today know what they want. Most all of them want a beautiful Lane Hope Chest. And no wonder! This romantic gift does so much to make dreams come true. Choose one of our popular Lane Cedar Chests for your girl graduate. It will have all the exclusive features that make a Lane a lifetime possession. Come in, soon.

Sossamon Furniture Co.

Main Street

Sylva, N. C.

A Statement To The Voters Of Jackson County

from **MRS. E. L. McKEE**

Candidate for State Senator in the County Primary

May 29, 1948

Of course, everyone favors improvement in the school situation, and increased salaries for teachers.

Of course, all favor better Farm-to-Market roads.

Of course, all favor expansion of the Public Welfare Program.

A great deal has been said about these matters in a general way, but few suggestions for securing same have been made.

Therefore, I propose to present to the voters of Jackson County, more specifically, my ideas for securing these results we wish for and so much need.

SCHOOLS

1. With regard to the school situation; my record along this line should be well known. It is a matter of record that I have supported every measure and every movement for the advancement of schools in Jackson County and North Carolina.

If elected, I shall sponsor legislation for higher salaries for teachers, also a substantial decrease in teacher load; I shall sponsor improvement in the method of selecting text books, and for handling our free text book system; it is my purpose to use the full measure of my influence toward securing liberal state aid for adequate school buildings and facilities; I hope to see included in the School Machinery Act, adequate provision for attendance officers; I shall endeavor to secure additional buses and better pay for school bus drivers, which at the present time, is ridiculously low.

ROADS

2. Concerning the Farm-to-Market roads; in which every citizen should be, and I think is, interested. Good rural roads go hand-in-hand with good schools, and they certainly play a major part in the economic well-being of the county. Farmers make few demands and I regard it as the bounden duty of those who represent them to answer their desperate call for improvement in the rural road situation.

Highway employees have been almost the forgotten men, when increased salaries have been considered. There should be substantial increases in salaries all the way down the line. I pledge my support to this end. Be it remembered that I include in this group State Highway Patrolmen.

In my judgement, the license fee for trucks hauling forest or farm products is excessive. If elected, I shall introduce at this session, as I did in a former session, a bill to reduce these fees.

PUBLIC WELFARE

3. Public Welfare is a matter close to my heart. I was a co-introducer of the bill under which the Public Welfare program now operates. There are several amendments, which, if I am a member of the Senate, I expect to sponsor: — A larger County quota of participants in Old Age Assistance and Aid to Dependent Children; an increase in the grants of each; elimination of the property restrictions which now exist. I do not believe that anyone should be disqualified because he owns a meagre amount of property. If elected, I shall work for some plan of relief for those between the ages of sixteen and sixty-five, who do not come under the provisions of any relief plan, and who are often in great need of assistance.

From the above, I hope you will see that I am not asking you to send me to Raleigh simply for the honor. It is my earnest desire that I may serve, worthily and profitably, all the citizens of County and District. To this end I pledge my untiring effort and influence.

Finally, may I quote from the editor of State magazine, "State laws affect us more directly than national laws, your State Senator and your State Representative can do you more good or more harm than any candidate you vote for."