

Wins U. S. Senate Nomination



Former Governor J. M. Broughton was winner of the short and long term for U. S. Senator in Saturday's primary over the incumbent William B. Umstead.

STATE COLLEGE ANSWERS TIMELY FARM QUESTIONS

QUESTION — What hybrid corn variety is recommended for silage?

ANSWER — For silage, the N. C. 26 variety is preferred. J. O. Lutz, Catawba County farmer, said he had used this variety and liked it better than the real silage corn. It gave him, on his land, from 18 to 20 tons of silage per acre.

QUESTION — How should corn be spaced to produce 100 bushels per acre?

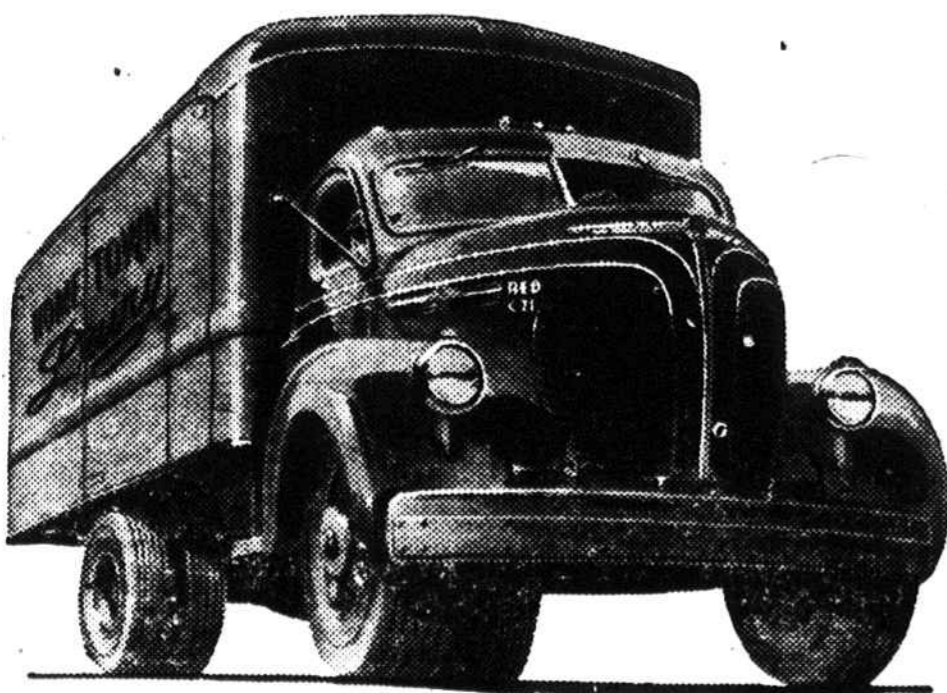
ANSWER — Earle Brintnall, Catawba County agent, received this query from a farmer, and here is his answer: "A little figuring might help out in this matter. It will require about 115 to 120 ears of hybrid corn to produce a bushel of corn. If you plant your corn in 3 1/2 foot rows, you will have to space it about 15 inches in the row in order to get 10,000 stalks to the acre. These 10,000 stalks should furnish you with enough ears to make 100 bushels or more."

QUESTION — How can I maintain high quality in summer-time eggs? ANSWER — Follow good management practices from nest to market. Produce infertile eggs. Gather eggs quickly, at least twice a day, and put them in a cool place. On the farm a well-ventilated, cool cellar is a good place to store them. Pack them in egg cases as soon as they are cool, and market them quickly, at least twice a week. A wire basket is a good container to gather eggs in if quantity is large. Store the home supply in the refrigerator. When taking eggs to market, keep them in the shade.

QUESTION — How does a 12-inch tree compare with a 10-inch tree in production of lumber? ANSWER — A 12-inch tree has twice as much wood in it as a 10-inch tree, and the timber in the large tree is of better quality.

EYES EXAMINED Glasses Fitted DR. ALDEN C. DOWNS will examine eyes and fit glasses in Sylva at the Carolina Hotel Friday, June 4, from 9 o'clock to 4 o'clock. If you have eye trouble or can't see well you should consult Dr. Downs on above date.

GET THE FACTS ON THE 1948 REO LINE



Six handsome, basic 1948 Reo truck models are rolling off the lines — headed by brand-new, extra heavy-duty Models 30-31. All along the Reo line you'll find new contributions to meet the advancing needs of the trucking industry — increased power in many models, side

cowl ventilators, easy-access doors — with the outstanding Reo styling, ruggedness, performance and economy that have made Reo a leader for 44 years! You are invited to visit our showroom for facts and specifications about the great Reo line of fine trucks for '48.

FACTS ABOUT REO MODELS 30-31—Tractor capacity up to 76,000 lbs. • Engines up to 200 H.P. • Big 75-inch, 3-man cab with full vision all around • Individual, adjustable driver's seat • More leg room and foot room • Side cowl ventilators • Big, straight-drop doors • Wide choice of engines, transmissions, wheelbases and cab-to-axle dimensions.



The finest in 44 years DISTRIBUTOR

CURTIS MOTOR COMPANY, Asheville, N. C.

Now On Display at ELDERS GARAGE, Sylva, N. C.

See Roy Elders, Salesman

Services at The Churches

Sylva Methodist (The Rev. W. Q. Grigg, Pastor) Sunday school will meet at 10 a. m., Gudger Crawford, superintendent. 11 a. m. Laymen's Worship Service. Message by W. E. Bird of Cullowhee. 8:30 p. m., Youth Fellowship. Wednesday 7:30 p. m. Choir Rehearsal.

Sylva Presbyterian (The Rev. W. H. Wakefield, Pastor) Services held in Episcopal church. 10:00 a. m. Sunday School. M. C. Cunningham, Supt. 11:05 a. m. Morning worship by the pastor using for his sermon subject, "What God Hath Joined." 8:00 p. m. Evening worship in charge of the pastor. Sermon subject, "Five Wise, and Five Foolish Persons."

Cullowhee Baptist 9:50 a. m. Sunday School 11 a. m. Morning worship. 4 p. m. Junior B.T.U. 6 p. m. Young People and Intermediate's B. T. U. and Fellowship Hour. Wednesday—7:30 p. m. Sunday school lesson pre-view. Friday, 7:00 p. m. Choir Rehearsal.

Cullowhee Methodist (The Rev. R. T. Houts, Jr., Pastor) 10 a. m. Church school. 11 a. m. Morning worship. 6:30 p. m. Youth Fellowship. 7:30 p. m. Wesley Foundation. Cashiers Baptist (Rev. Edgar Willix, Pastor) Sunday School each Sunday at 10 a. m. Worship service each 1st and 3rd Sundays at 11 a. m. and 7:30 p. m.

St. John's Catholic Church Schedule of Mass Sylva, 4th Sunday 8:00 a. m. Sylva Baptist (The Rev. C. M. Warren, Pastor) Sunday school at 10 a. m., Mr. Carl Corbin, Supt. 11 a. m. Morning worship by the pastor, using for his sermon subject, "Christ Is The Answer." B. T. U. at 7:00 p. m., Miss Hattie Hilda Sutton, Director. 8:00 p. m. Evening worship by the pastor using for his subject, "Showers of Blessings." Tuesday, 7:30 p. m. Prayer meeting.

East Sylva Baptist (Rev. E. W. Jamison, Pastor) 10 a. m. Sunday School. DeWitt Beasley, S. S. Supt. 11 a. m. Morning Worship. 6:30 p. m. B.T.U. James Jones, director. 7:30 p. m. Evening Worship. Wed. 7 p. m. Choir Practice. Wed. 7:30 p. m. Prayer Meeting.

Wesleyan Methodist (Rev. W. A. Todd, Pastor) 10 a. m. Sunday School. 11 a. m. Morning Worship. 8 p. m. Evening Worship.

Scotts Creek Baptist (The Rev. B. S. Hensley, Pastor) 10 a. m. Sunday School. 11 a. m. Morning Worship by the pastor. 6:30 p. m. Baptist Training Union. 8 p. m. Evening Worship.

Glenville Baptist (Rev. Hoyt Hadaway, Pastor) 10 a. m. Sunday School. Mr. McCoy, S. S. superintendent. 11 a. m. Morning worship. 7 p. m. B.T.U. 8 p. m. Evening worship.

Lovedale Baptist Church (Rev. G. E. Scruggs, Pastor) 10 A. M. Sunday School. 11 A. M. Worship Service. 7:30 P. M. Worship Service.

Tuckasegee Baptist (Rev. Edgar Willix, Pastor) Sunday Schools each Sunday at 10 a. m. Worship service at 11 a. m. and 7:30 p. m. each 2nd and 4th Sundays.

Wilkesdale Baptist (Rev. Jarvis Underwood, Pastor) 10 a. m. Sunday School 11 a. m. Worship Service. 6:30 p. m. B.T.U. 7:30 p. m. Evening Worship.

COWARD REUNION TO BE JUNE 13

The annual Coward reunion will be held this year with Mr. and Mrs. George Coward at their home at Whittier. At this time the descendants of Mr. Nathan Coward gather at the home of one of the family on the Sunday nearest June 12, the birthday of Mr. Coward. They were begun many years ago in celebration of his birthday and since his death have been continued as a reunion for the family. Let all the members of the Coward family come and bring their dinner and have a good time together.

St. David's Episcopal CULLOWHEE (Rev. A. Rufus Morgan, Pastor) 4:00 p. m. Vesper Service in charge of the pastor.

The Church of God The Rev. Homer Pope, Pastor 2:30 p. m. Sunday School. 3:00 p. m. Afternoon Worship. Friday 7:00 p. m. Y.P.E. and Prayer Meeting.

TO CONTEST



W. H. (Gudger) Crawford, former Sylva High school principal, and candidate for State Senate, lost the nomination to Mrs. E. L. McKee by one vote. Mr. Crawford has said that he plans to contest and have a recount of the county vote.

Read for Profit—Use for Results HERALD WANT ADS

PERSONALS

Miss Alberta Delozier, a student at Gallaudet College, Washington, D. C., is visiting here with her sister, Mrs. Sam Turpin, and Mr. Turpin. Mrs. Harry Evans of Batte, Mo., was the guest last week of her cousin, J. A. Gray, and family. She was joined here Sunday by T. C. Gray and son, Tommy, of Haystack, and together they went to Statesville and Kannapolis to visit relatives. Mr. and Mrs. George Lee left last Tuesday for W. Lee, where they attended the funeral of Miss

Emily Farrior. From there they went to Baltimore where they are visiting friends. They will also go to New York City before returning home. Friends of Mrs. C. F. Rhinehart of Canton, former Sylva resident, will regret to learn that she is seriously ill at St. Joseph's hospital, Asheville.

DEXTER WASHERS FARMERS FEDERATION

Is Your Home Like An Oven In The Summer? No Need To Be You Know, If You Insulate The Baldwin-Hill Black Rockwool Way

WINTER FUEL SAVINGS PAY FOR IT REDUCES YOUR FIRE HAZARD 75% PHONE OR WRITE FOR FREE ESTIMATE ROCK WOOL INSULATING CO. 20 Technical Building — Phone 2949 Asheville, North Carolina



When A Girl Marries Five Ways to a Mans Heart KEEP HIM HAPPY WITH WELL-PLANNED, WELL-BALANCED MEALS! Include his favorite foods and seasonings in the daily menus.. and slip in one of yours! MASTER THE ART OF TIMING! Serve souffles hot and fluffy. Meat rare or well-done according to preference, salads crisp and cold, coffee "perked" to perfection. KEEP THE ELEMENT OF SURPRISE IN YOUR MENUS! Let "new ways with everyday foods" be your kitchen watchword. Collect recipes that are tasty, easy-to-prepare, budget-wise and different. KEEP HIM PROUD OF YOUR CULINARY SKILL! Master 3 or 4 "show-off menus for those in-law, boss, or four-some occasions. Include a super, reputation-making dessert...strawberry icebox cake, upside-down fudge cake, chocolate chiffon or lemon angel pie SHOPPING AT DIXIE-HOME STORES WILL HELP KEEP THE BUDGET BALANCED. Study low-cost Menus. Learn the quantity of food to buy for two. Serve only the amount you can eat at one meal. Collect "twosome" recipes and make use of all left-overs. Needles and pins, Needles and pins, When a girl marries, Her trouble begins! O'er menus she'll fuss, O'er budgets she'll pour Until she starts shopping at Dixie-Home Stores BIG Values in Fresh Fruits and Vegetables "Fresh Crisp from New Fields" 2 Heads Calif. Iceberg Lettuce 19c "Sugar Peas at their Best" 2 Pounds Calif. Giant Stride Peas 39c Refreshing in Cool Summer Drinks Extra Large Calif. Sunkist Lemons doz 35c Extra Color & Flavor for Salads 2 Bunches Fresh Crisp Radishes 15c "New Crop From Carolina 5 Pounds RED BLISS POTATOES 23c "Famous Seeded Grapefruit at it's Best" Florida Duncan Grapefruit Large 3 for 19c Med. 3 for 13c "Golden Bunches of Vitamins" 2 Bunches CALIFORNIA CARROTS 29c "Luscious When Served Cold" 4 Pounds Western Winesap Apples 51c Rosedale Green and No. 2 Can Hunts No. 1 Tall Can WHITE LIMA BEANS 24c FRUIT COCKTAIL 24c Van Camps No. 2 Can, 2 For Dukes Pint Jar PORK AND BEANS . 33c MAYONNAISE . . 49c COOK-KILL Bug Killer with Extane* GUARANTEED FASTER KILL Roaches, Waterbugs, Ants, Moths than any insecticide you ever used OR YOUR MONEY BACK! PINK ONLY 69c A Product of Cook-Kill Co., Kansas City, Mo. BIG Values in Quality Meats Center Cut Rib Pound Shoulder Pound PORK CHOPS 69c PORK ROAST 49c Pinky Pig Pound Cello Wrapped Pound PORK SAUSAGE 49c BACON SQUARES 43c MACKEREL FILLETS LB 19c HALIBUT STEAK LB. 43c Skinless COD FILLETS . 37c Red SALMON STEAK 53c Indispensible CUT-RITE PAPER WAX PAPER Roll 22c Always Read Our Ads DIXIE HOME SUPER MARKETS Fine Foods Quality Tender Meats Self Service Everyday Low Prices