

THE FARMERS Of Jackson County

THROUGH THEIR
JACKSON COUNTY FARMERS CO-OPERATIVE

EXTEND A MOST CORDIAL WELCOME TO
NORTH CAROLINA ASSOCIATION OF CHAMBER
OF COMMERCE EXECUTIVES

SEPTEMBER 12, 13, AND 14

This firm serves the farmers of Jackson County as a market for
their produce as well as sharing profits with them in what they buy
OURS IS THE NEWEST GRADE "A" MEAT MARKET
IN THE COUNTY.

A. L. SOUTHARD, Manager

Mill and Main Streets

Sylva, N. C.

WELCOME TO SYLVA

NORTH CAROLINA ASSOCIATION OF
CHAMBER OF COMMERCE EXECUTIVES

WHERE A HEARTY GREETING AWAITS YOU

We hope that your three days here will be the highlight of your summer.

The Jackson County Bank

Serving All Jackson County and Vicinity

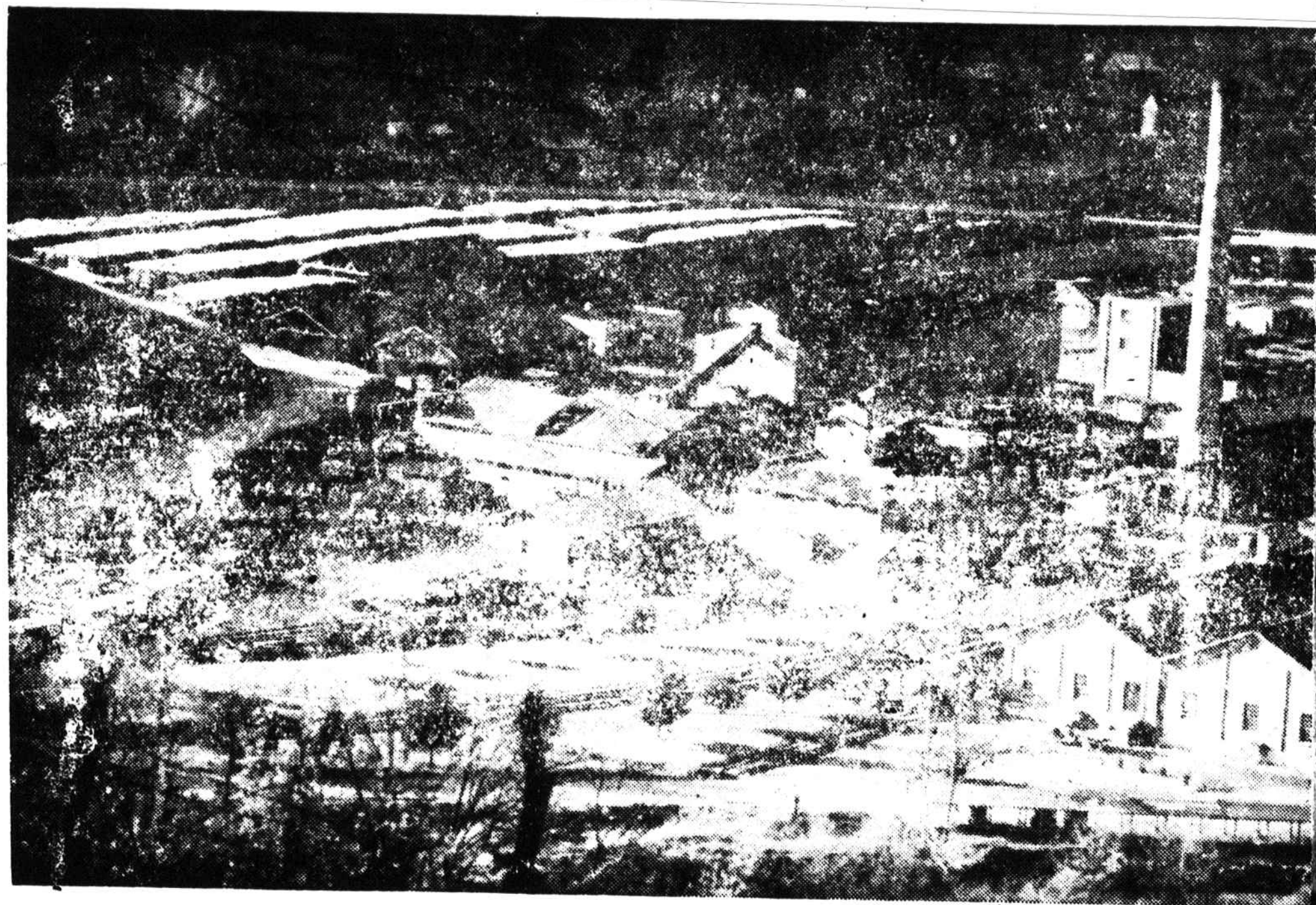
"Member Federal Depositors Insurance Corp."

Sylva, N. C. — and — Highlands, N. C.

∴ Jackson County's La

Welcome

The North Carolina Association of
in annual convention



PLANT OF THE MEAD CORPORATION

One of Western North Caro

employing several hundred Jackson County men, some of whom have been with the plant for 20 years or more, representing the most loyal employees to be found anywhere.

The products of this plant are the manufacturing of .009 point shipping container board, with a daily capacity of over 125 tons. The product is used in the manufacturing of shipping containers; and the manufacturing of Chestnut tanning acid. The extract is supplied to the tanners for use in the tanning of leather.

The Mead

Sylva