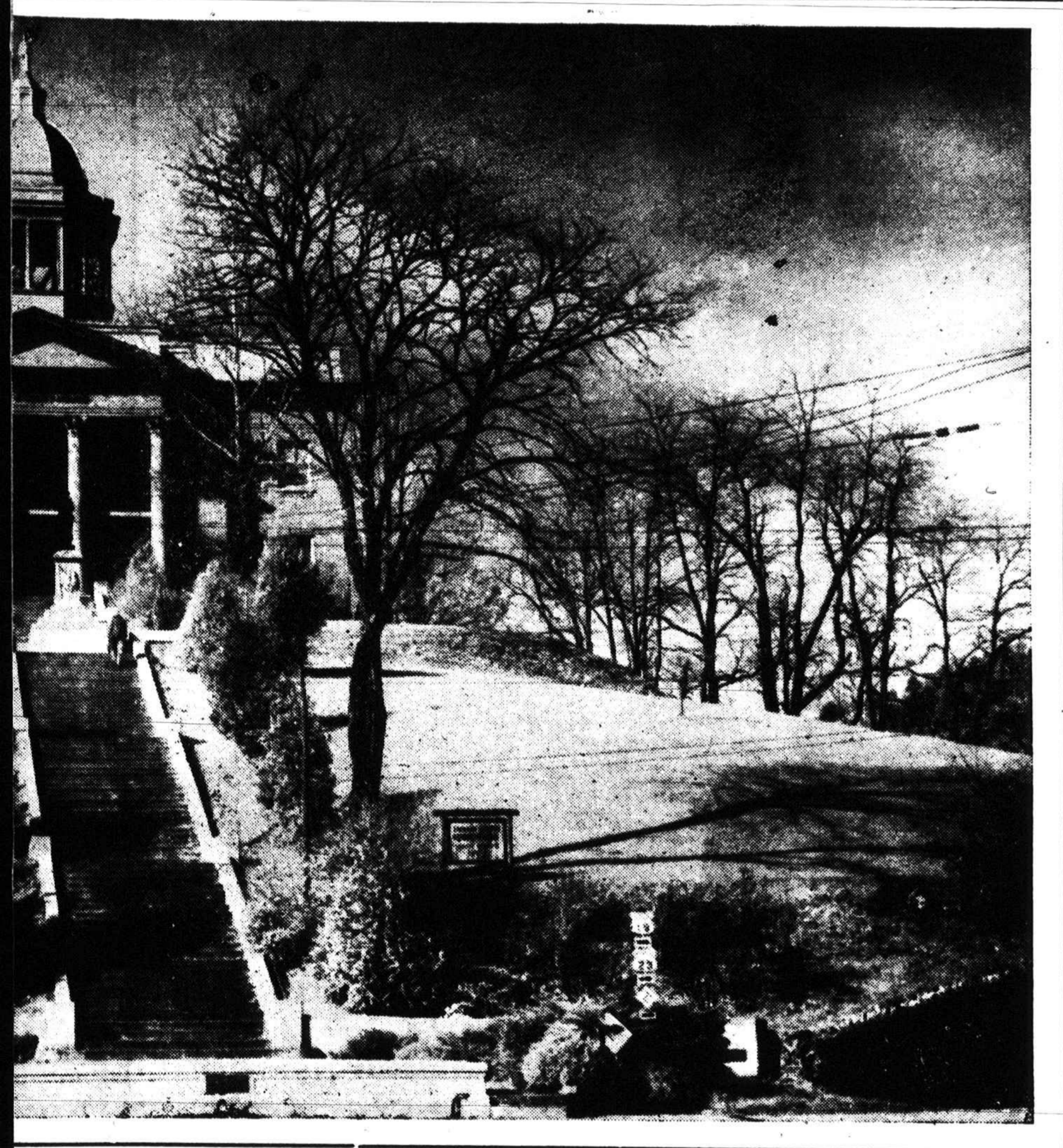


COUNTY COMES of Commerce Executives



COURTHOUSE, SYLVA, N. C.

Materials

A variety of raw materials, many of which are produced here—have hardly been used. It has large supplies of lumber and deposits of clays, such as Talc and Copper, etc.

The county's resources—materials already produced here—have hardly been

Labor

Jackson county has a considerable labor force, and its labor history has been active in the years past. Moreover, because of the better living conditions, it would not be difficult to attract any type of labor for which

Power and Water

Sylva and Jackson county are supplied with electric power by Nantahala Power and Light Co., and Dillsboro and Sylva Power & Light Co., very efficient organizations with a particularly progressive policy with regard to the encouragement of industry.

An abundant supply of pure water is always available for any purpose.

Markets

FOR many kinds of specialized industry, Jackson county and vicinity surrounding, provide a rich and important market, having approximately 20,000 resident population with a high per capita buying income. For foreign markets, Jackson county is served by the Southern Railway, making connections at Asheville for all points in the north and east, and at Murphy with the Louisville & Nashville Railway for points south and west. Dependable bus service between Asheville and Chattanooga, Tenn., Atlanta, Ga., and Knoxville, Tenn., serves the county with frequent schedules. U. S. 19-A and 23, two Federal highways, and 107, State maintained road, pass through Jackson county.

Officials

GLENN HUGHES
Register

M. L. SNIPES
Farm Agent

G. C. MIDDLETON
Sheriff

MISS MARY JOHNSTON
Home Agent

W. B. BREEDLOVE
Members



PRESCRIPTION
SPECIALISTS



THE PROFESSIONAL DRUG STORE

HUMBLY WELCOMES ALL CHAMBER OF COMMERCE EXECUTIVES AND YOUR FAMILIES TO SYLVA AND WILL STRIVE EARNESTLY TO MAKE YOUR STAY A PLEASANT ONE.

The PROFESSIONAL DRUG STORE

Main Street YOUR WALGREEN STORE Sylva, N. C.

WELCOME

Executives of

North Carolina

Chambers of Commerce

A. J. DILLS

ALL BRANCHES OF INSURANCE

Room 8 - - Ferguson Building

Phone 35 and 106-J.

Sylva, N. C.