

KEEP COOL SAVE FUEL

JOHNS-MANVILLE INSULATION

Our Crew Working in Sylva This Week For Information And Free Survey of Your Home

Call Mrs. Raymond Nicholson

SYLVA DAY 92-J — NIGHT 153

CITIZENS TRANSFER & COAL CO.

Dial 2-2461 ASHEVILLE, N. C.

EVERYTHING IN THE BUILDING LINE

Rock Lathe — — Plaster Lime

Mortar Cement

SHOP WORK

Doors — — Windows

Overhead Garage Doors and Hardware

IN THE HARDWARE DEPARTMENT

Coal and Wood Stoves—Zenith Washing Machines

Plumbing — — Bathroom Outfits

TOOLS for the logger, Carpenter, Plumber

24-INCH MEADOWS CORN MILLS

Approximately 1,000 items and 15,000 feet of floor space.

—A large yard and plenty of parking space—

SYLVA COAL & LUMBER CO.

"Directly Across From Depot"

Phone 71 Sylva, N. C.

STATE COLLEGE ANSWERS TIMELY FARM QUESTIONS

QUESTION—Are there any disadvantages to artificial breeding of dairy cattle?

ANSWER—There are none which cannot be overcome by properly operated breeding associations, according to Extension dairy specialists at State College. Don't expect artificial breeding to settle cows on which the bull has failed. The program is not a cure for shy breeders or cows with diseased reproductive organs.

QUESTION—Are all proved bulls good sires?

ANSWER—By no means. Records of the U. S. Department of Agriculture for many years show that of the hundreds of bulls proved in Dairy Herd Improvement Associations less than 50 per cent increase production in their daughters as compared with the daughters' dams. Therefore, around half of the bulls that have been and are now still in general use are lowering rather than increasing milk production.

QUESTION—What is a desirable proved sire?

ANSWER—A bull whose

JACKSON FARM BRIEFS

Congratulations to the G. I. farm trainees of the Sylva training center on buying over 40,000 strawberry plants for setting this fall. The plants are being bought in Tennessee and a truck is going after them in the next few days. The variety will be Tennessee Beauty. It is especially recommended by officials of the Skyland Frozen Food Plant at Hendersonville.

The income per acre from strawberries is high. This crop fits our small farms and they are especially profitable where the home labor supply can be used at harvesting time.

Let's all push strawberries in Jackson county as a cash crop. We are sure of a steady market at Hendersonville when they cannot be marketed locally.

Lonnie M. Dills of Cullowhee has had unusual success getting a stand of pasture grass started. Last fall he cleaned off 3 acres of ground. In February of this year he applied 2400 pounds of superphosphate and then sowed his seed on the snow. As the snow melted the seed was carried into the ground.

Mr. Dills kept all livestock off the grass until it was 6 inches high.

daughter's records, when compared with their dams, indicate he can transmit a high level of production. Such bulls are very scarce; only through artificial insemination can their ability be fully utilized. It is possible by artificial breeding to get 1,000 or more calves from one bull in a year as compared with about 50 by natural breeding.

QUESTION—How does the conception rate in artificial breeding compare with natural service?

ANSWER—Careful records kept on a large number of cows show it to be just as sure as the bull. On an average it takes 1.5 services to settle a cow.

Pfc. Scott Tolbert Promoted To Cpl.

Pfc. Scott M. Tolbert of the United States Air Force, now stationed at Fort Francis E. Warren, Cheyenne, Wyoming, has been promoted to the rank of Corporal.

Corporal Tolbert, formerly of Speedwell, joined the Air Force a year ago last October and took his basic training at Lockland Air Base, San Antonio, Texas.

After four and one-half months

Joseph F. Tucker Now On USS Portsmouth

Joseph F. Tucker, fireman apprentice, USN, son of Mrs. H. L. Steele, of Glenville, is serving aboard the light cruiser USS Portsmouth which has recently been engaged in Reserve training cruises to Caribbean ports.

He says this is necessary in order that a turf will form and hold the soil in place. He observes that his livestock likes this fertilized pasture, and by so treating the grazing period is extended several weeks into the fall.

Upper District Singing Convention October 17

The Upper District Singing Convention will be held at the Hamburg Baptist church at Glenville, October 17, at 2 o'clock p. m. All singers, choirs and quartettes are given a special invitation to attend and join in the singing.

The public is cordially invited.

training in grader school at Fort Francis, Corporal Tolbert is now an instructor with the 3451st Technical Training Squadron.

AMANA Walk-In-Refrigerators FARMERS FEDERATION

666 GIVES FAST RELIEF when COLD MISERIES STRIKE LIQUID OR TABLETS

TRULY FINE MONUMENTS

For Truly Fine Monuments See Our Many Designs

in Granite Or Marble

SYLVA MARBLE AND GRANITE WORKS

JAMES T. BALES, Owner

SQUARE DANCE

—at—

HELEN'S BARN

Highlands, N. C.

Every

Saturday

Night

Good Mountain

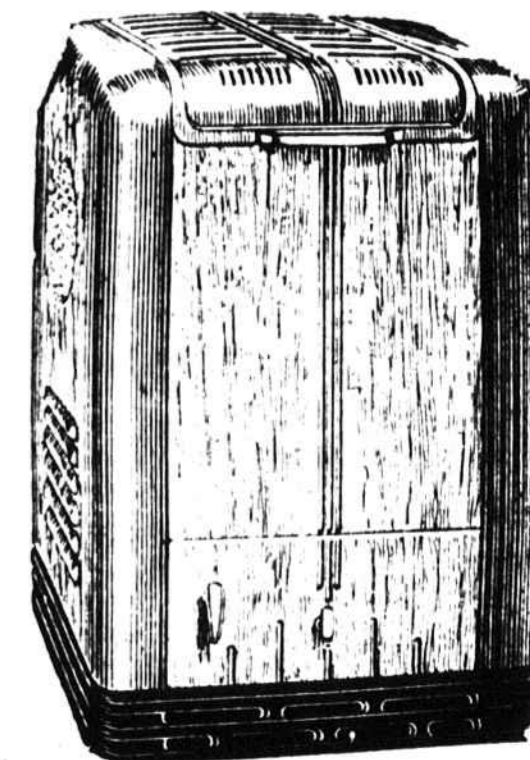
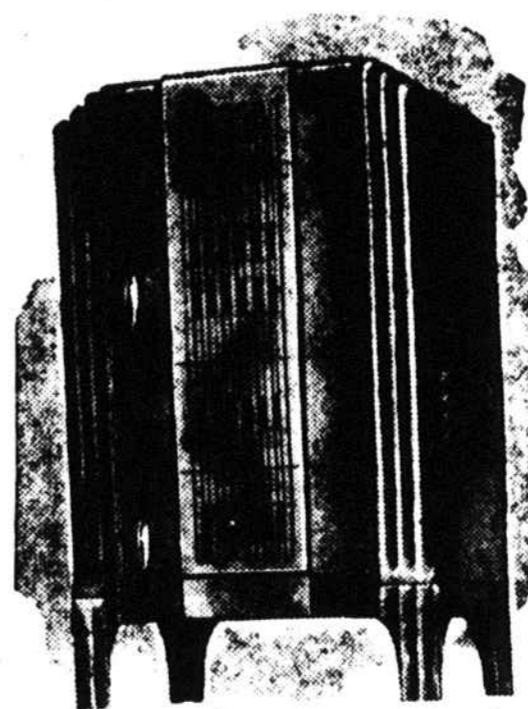
String Music

STOVES!

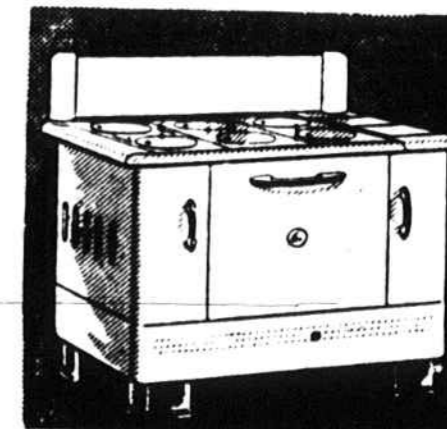
The Time? NOW -- The Place?

at Sossamon's

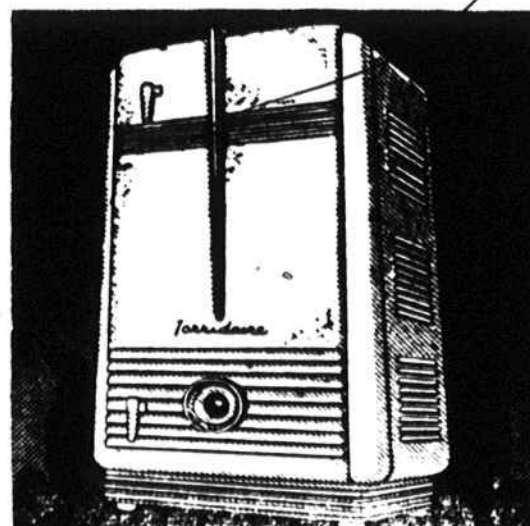
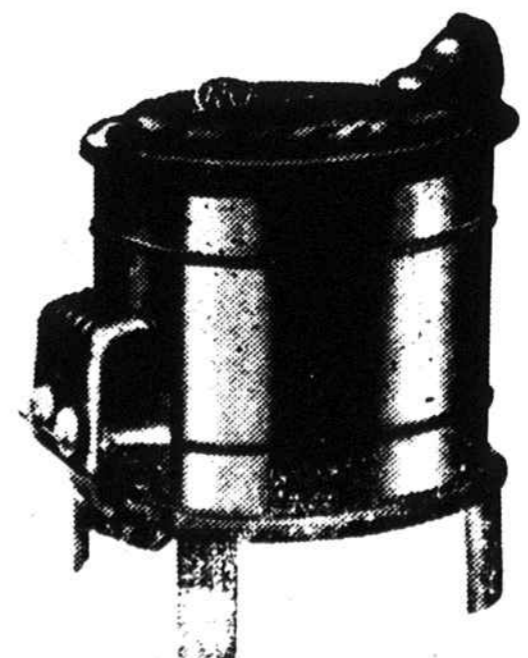
COAL OIL WOOD



Buy Now



Easy Terms



Put a New "Feel" in your Ford!

We Ford Dealers know all the little tricks that make a world of difference in your Ford's "feel." Because of our experience with thousands of Fords we can often suggest a low cost service that's best for your Ford. With Special Ford Equipment and Factory-approved Methods, our Ford-trained Mechanics can save you time, money and trouble. And we can supply Genuine Ford Parts. Drive in today, and get our Real Ford Service.

We Ford Dealers Know Fords Best!



Your Ford Dealer invites you to listen to the Fred Allen Show, Sunday Evenings—NBC Network. Listen to the Ford Theater, Friday Evenings—CBS Network. See your newspaper for time and station.

REECE-HAMPTON MOTOR COMPANY, Inc.

Cullowhee Road

Sylva, N. C.

Sossamon Furniture Co.

Main Street

Sylva, N. C.

