

—Read Herald Classified Ads For Profits—

WANTED

Peeled pulpwood during the 1949 season, delivered our mill yard, Sylva, N. C. For price and specifications call or write . . .

THE MEAD CORPORATION

Wood Department Sylva, N. C.

So Refreshing and Friendly When Company Drops in



THE BUNNY PRINCE OF ENGLAND



A TOY RABBIT handed to Prince Charles (left) poses a problem for the tiny heir to the British throne in this picture taken by royal command at Buckingham Palace, London. But soon the royal son of Princess Elizabeth and the Duke of Edinburgh decides to kiss his little toy (right) in the manner of all babies, royal or otherwise. (International)

FORTY-ONE STUDENTS MAKE ALPHA HONOR ROLL, FIFTY-SEVEN MAKE BETA

Forty-one students at Western Carolina Teachers college made the Alpha Honor roll for the winter quarter. To make this honor roll, the student must earn a minimum of 40 quality points with no grade below C on any subject. Those making the honor roll were Carl Edwin Allman, Dillsboro; Lawrence Arney, Morganton; James C. Atkinson, Hamlet; Bill Bauer, Fontana Dam; Rebecca Bauer, Fontana Dam; Nicholas Bonarrigo, Canton; Virginia Barnwell, Greenville, S. C.; Phyllis Bowen, Hampton, Va.; Lawson Brown, Chadbourn; Tase Cook, Marshall; Winona Cotter, Cullowhee; Juanita Dills, Cullowhee; Patricia Edwards, Durham; Robert Failing, Los Angeles, Calif.; Jesse Flake, Speedwell; Clinton Franklin, Marshall.

Hael Gardin, Marion; Thomas S. Grogan, Canton; Walter A. Hunter, Greensboro; Freda Mae Hall, Franklin; James Newell Hawkins, Suit; Paul E. Hill, Murphy; Herbert Hyde, Bryson City; Florence Houts, Cullowhee; Robert B. Jones, Williamston; Thelma Jean Kilpatrick, Patrick; Forrest B. Lindsey, Lowell; Mrs. Janie

Leftwich, Cullowhee; Judson McGinnis, Lincolnton, Marie McGinnis, Lincolnton, Lowaine Mashburn, Cullowhee.

Fifty-seven students made the Beta Honor roll for which the student must make a minimum of 32 quality points with no grade

NEEDS VOLUNTEERS

20,000 volunteers are needed by the N. C. Division of the American Cancer Society to carry out its program of education, service and research. Recruits should apply at the local ACS office.

below C on any subject.

Those making the Beta Honor roll were Joseph Bowles, Whittier; Murray Brisson, Cullowhee; William Burnette, Marion; Allan Brooks, Franklin; June W. Brown, Bryson City; William H. Brown, Lexington; Morris E. Bumgarner, Hendersonville; Rosalie Cook, Asheville; June Mildred Cowan, Sylva; Ray Clark, Cullowhee; Therman T. Dockery, Hiwassee Dam; Ann Davidson, Boiling Springs; William Easterling, Hamlet; Charles W. Edwards, Cane River; Earl H. Elliott, Marion; Clyde Etheridge, Woldon; Frances Finger, Waynesville; Mary Lou Gloyne, Cherokee; James Gray, Sylva; Paul Ray Hawkins, Suit.

Mary C. Henderson, Cashiers; George T. Hornaday, Shelby; Joyce Huggins, Franklin; John Kincaid, Webster; Dorothy M. Kivett, Pilot Mountain; James R. Lindsey, Sylva; Martha E. Lynch, Mooresville; Mary Elizabeth Lynch, Mooresville; James B. Martin, Whittier; Ruth Muse, Asheville; John May, Ridgecrest; Paul Monroe, Eagle Springs.

Robert E. Nelson, Arden; William Clyde Pressley, Speedwell; Rhumell Pyrtle, Kernersville; Clark Pennell, Lenoir; George Quesada, Tarryton, N. Y.; Velma Ramsey, Hendersonville; Dalton Rogers, Cashiers; Joe Ross, Monroe; Clayton Ramsey, Franklin; Suzanne Reagon, Weaverville; Robert Seago, Speedwell; Alvin Sherlin, Cliffside; Donald Splawn, Cliffside; Henry W. Stauffer, Marion; Clifton Smith, East LaPorte; John A. Thompson, Hayesville.

James Donald Tomberlin, Swiss; Yolanda Taylor, Black Mountain; David Walker, Webster Groves, Mo.; Dewey Whitaker, Horse Shoe; James Whitener, Marion; Shirley Whitten, Hot Springs; Frank E. Williams, Black Mountain, Margaret Wilkes, Cullowhee; and John Zimmerman, Marshall.

Interior

Exterior

DECORATORS

Color is our Business

Honest and Reliable Painters

ARKANSAS and LITTLEJOHN

Phone No. 3

Cherokee, N. C.

SEE US FOR ALL NORGE APPLIANCES

Refrigerators - Deep Freezers - Washing Machines
Electric Stoves - Electric Hot Water Heaters

SYLVA COAL & LUMBER CO.

Phone 71

Sylva, N. C.

HYBRID CORN

FOR LARGER YIELDS PER ACRE

YELLOW

WHITE

★ U. S. No. 13

★ N. C. T-20

★ N. C. No. 282

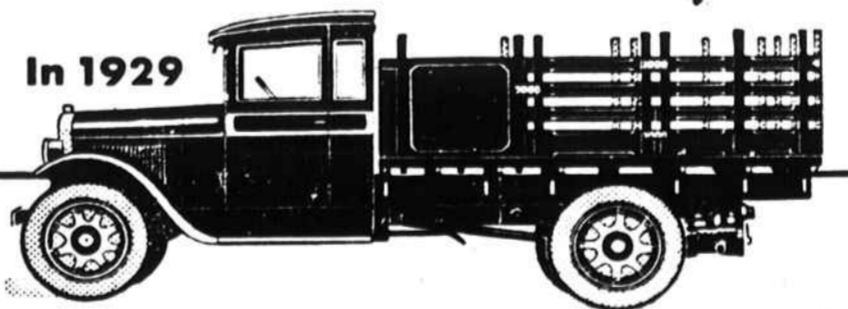
★ Tenn. No. 10

★ Dixie No. 17

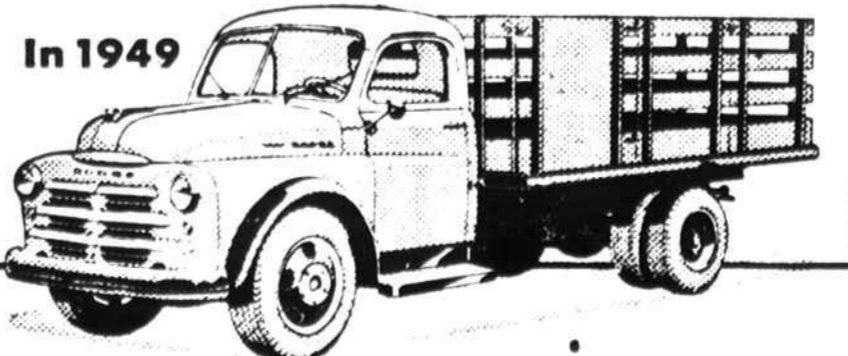
FARMERS FEDERATION CO-OP

REAL VALUE FOR YOUR DOLLAR!

DODGE "Job-Rated" TRUCKS ARE LOW PRICED!



FEATURES:	1929	1949
Nominal Rating	1½-ton	1½-ton
Horsepower	63	109
Compression Ratio	5.18/1	6.6/1
Max. G.V.W. Capacity	8,250 lbs.	14,500 lbs.
Max. Payload Capacity	3,000 lbs.	8,750 lbs.
Top Speed	40 m.p.h.	51 m.p.h.
Rear Axle	Semi-Floating	Full-Floating
Brake Area	293"	336"
Tires	High Pressure	Balloon
Cab	Wood and Steel	All-Steel "Pilot-House"
Seat	Fixed	Adjustable "Air-O-Ride"
Price	APPROXIMATELY THE SAME PRICE	



Dodge value is at its highest peak in 20 years. Study the interesting chart at the left.

Dodge maintenance costs are at an all-time low . . . due to a wealth of engineering features and advancements.

In addition to features listed in the chart, consider these Dodge engineering advancements that are yours today . . . not one of which was available 20 years ago.

Connecting rod bearings are removable. Oil screen is of the floating, not fixed, type; a rotor oil pump replaces the old gear design. A water distributing tube increases engine efficiency.

Valve seat inserts substantially prolong engine life, increase gas economy, and reduce frequency of valve-grinding jobs. Vast improvements have been made in piston design; top piston rings are now chrome-plated, insuring better compression, longer cylinder wall life.

Famed Amola steel replaces alloy steels in springs and axle shafts. Hypoid rear axles replace the spiral bevel type, and rear axle shafts are shot-peened.

There are 7 frame crossmembers (including a channel-type bumper) instead of 4. Added features include voltage-control regulators, stepped hydraulic brake cylinders, and 35- instead of 20-ampere capacity generators.

VALUE features in the new "Pilot-House" cabs . . . not present in '29 models . . . include 7-step seat adjustment on famed "Air-O-Ride" seats; slanted "V"-type windshield; safety glass; 4-point rubber, instead of rigid mounting; 57¼" seat width as against 45¼"; outside gas tank filler, instead of under seat, and many more.

So . . . if you're using worn-out or "high-mileage" equipment, stop and think! Consider your present costly maintenance expense, in the light of the savings you would make with modern, advance-design Dodge "Job-Rated" trucks.

Remember, Dodge "Job-Rated" trucks . . . in every weight class . . . are priced with the lowest. Take advantage of current low prices, and switch to Dodge "Job-Rated" trucks . . . now!

Come in! We'll show you a truck "Job-Rated" to fit your job . . . save you money . . . last longer!

Cogdill Motor Company

Main Street

Sylva, N. C.

THIRSTY



OR NOT

