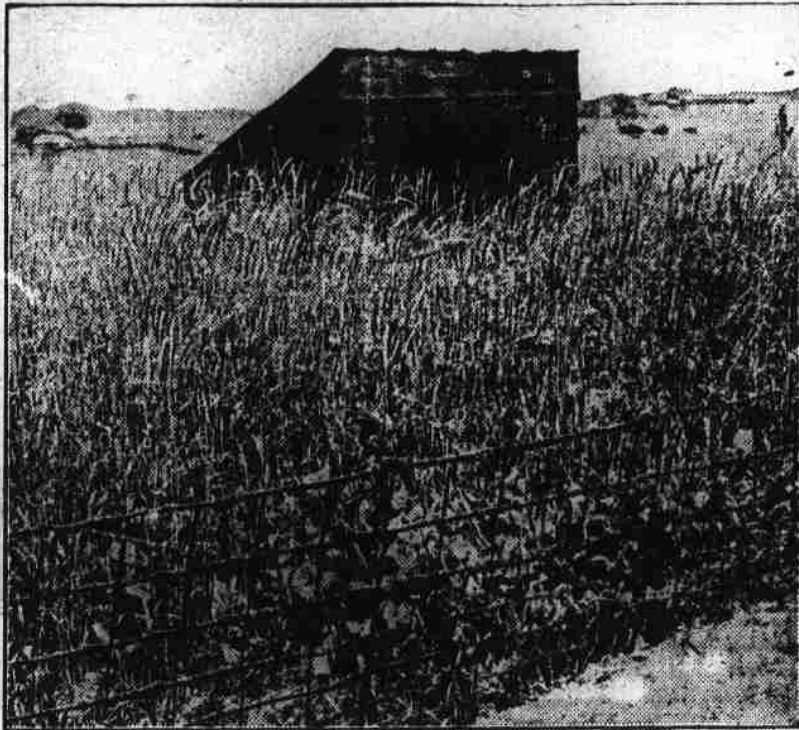


RAPE MAKES EXCELLENT PASTURE FOR HOGS



AN ACRE OF RAPE AND RYE.

When sown in September, or earlier, an acre of this kind of pasture affords, on the average, grazing for six 100-pound fattening pigs from the middle of October to May, provided a half ration of grain is used as a supplement.

By C. B. WILLIAMS, Chief, Division of Agronomy, N. C. Experiment Station, West Raleigh.

The rape plant closely resembles the ruta-baga during its early stages of growth; in fact, so close is this resemblance that often an experienced grower cannot distinguish between them. Its root system, however, is more like that of the cabbage. It likes cool weather and will grow during any portion of the year after severe freezing weather is passed. It will endure pretty severe cold weather in the fall and winter without being materially injured; in fact, it may be used for pasturage after being frozen, provided stock are kept off while it is frozen. It does not make much growth during the hot, dry months of mid-summer. Under ordinary conditions the plants will attain a height of 18 inches to 2 feet or more. The Dwarf Essex variety of the crop is best suited for us under Southern conditions.

Possibilities of the Crop.
Farmers are becoming more and more interested in the production of green crops for fall, winter and early spring grazing. Especially is this true of those who are engaged in the raising of hogs and poultry. For winter pasturage an acre or two of this crop will supply many tons of nutritious feed at the time of the year when green feeds are scarce. It has been fully demonstrated by repeated trials that an acre of rape properly seeded on good rich land will produce as much pork when used as a hog pasture as the same acre of land cultivated in corn. The rape can be grown much cheaper than the corn, as it will not require any cultivation, and the preparation of the seed-bed and seeding will be about the same for both. The hogs will harvest the rape crop, while the corn must be harvested by the farmer himself. It should be remembered, however, that the acreage of rape that can be profitably utilized for pasturage on the average farm is limited, it usually not being more than two or three acres.

In feeding experiments at the Alabama Station running for 147 days (November 9-April 5) with pigs weighing approximately 45 pounds each at the beginning of the experiment, it was found that the two lots of pigs fed on a ration of two parts of corn and one part of wheat shorts and allowed the use of a rape pasture during the period, produced pork on an average of 34.4 per cent less cost per pound, counting the cost of providing the rape pasture, than did another lot fed on the same ration and confined in dry lots. In other words, the lots fattened on rape pasture, supplemented with the necessary amount of the ration of corn and wheat shorts, made very satisfactory profit, while the lot fattened on the ration of corn and wheat shorts alone in dry lots afforded little or no profit.

Soil and its Preparation.
Rape is best adapted for growth on a deep, rich, mellow, loamy soil that is fairly well stored with humus. It does not do well on the very light sandy or stiff clay soils because they are deficient in organic matter. Any soil that will produce wheat and corn well will be found suited for the growth of rape. In preparing the land it should be well broken, then thoroughly harrowed into a fine, clean seed bed, as is usually done for turnips or ruta-bagas. If the land has a liberal application of manure the previous year, so much the better. On average land it will be well to apply broadcast over the land, just after breaking and before harrowing, about 300 to 500 pounds per acre of a fertilizer containing 3 to 10 per cent available phosphoric acid, 4 to 6 per cent potash, and 3 to 4 per cent nitrogen.

Seeding.
For the Coastal Plain and Piedmont sections, the spring seeding may be made during March or early in April, and the fall seeding any time between August 1 and October 15. In the mountain section the spring seeding will have to be made in April and the fall seeding during the latter part of July or early in August in order to get best results. The rape seed are

sown broadcast alone or with other crops like small grains and crimson clover. In sowing with small grains the rye, oats, or wheat seed should first be drilled in or sown broadcast and covered an inch deep and then the rape seed sown broadcast and lightly covered by means of a light smoothing harrow or brush. Where the rape is used alone, 4 or 5 pounds of seed per acre will be sufficient. A good seeding, when sown with oats, would be 1 1/2 bushels of Red Rust Proof or Applier oats with about 2 to 3 pounds of Dwarf Essex rape seed. Rye at the rate of 2 pecks or wheat at the rate of 4 pecks per acre may be substituted for the oats if found desirable to make the substitution. Another mixture that has been found to give good results in supplying pasturage for hogs consists of a seeding made up of 2 to 3 pecks of rye, 5 to 6 pounds of crimson clover, and 2 pounds of Dwarf Essex rape seed. This latter mixture has proven particularly valuable for the mountain section for elevation less than 2,800 feet above sea-level. Usually with rape alone or seeded in the mixtures indicated above the grazing may be started usually within thirty to sixty days after seeding. Frequently during a favorable season the rape may be lightly grazed by pigs three to four weeks after seeding.

Precautions in Grazing.
In pasturing rape the hogs should not be allowed on it until the plants are at least 10 to 12 inches high, for if pastured before this time the young plants will be likely to be pulled up and killed. Care should be exercised, too, that the number of hogs on the pasture is not so large as to keep the rape too closely grazed, for such would prove fatal to the plants and the life of the pasture would thereby be materially shortened. After being grazed, the plants should be given an opportunity to get well started into growth before being grazed again. By dividing the field into lots these may be pastured in succession. If sown on good land and properly handled one acre of rape will provide grazing for ten or twelve hogs for something like two or three months or more.

PREPARING FOR A LARGER CROP OF WHEAT THIS YEAR

FLOUR WILL BE HIGH NEXT YEAR AND FARMERS SHOULD INCREASE THEIR CROP.

By C. B. Williams, Chief Division of Agronomy, N. C. Extension Service, West Raleigh, N. C.

Indications are that the price of wheat, and hence of flour, is to be high during the next year. This will naturally cause a planting of an increased acreage of this crop. Under normal conditions this would not be a promising situation under which to advise the growing of more wheat; but since Congress will in all probability fix a minimum price for standard grade wheat at primary markets of \$2.00 per bushel it certainly seems to be advisable this year.

In the Piedmont and mountain sections of the State, wheat growers should increase their acreage to some extent at least. Those who have not grown this crop previously in this portion of the State might do so with safety, and in all probability put in a few acres to good advantage to provide for the needs of the family. On some of the more compact eastern soils, also wheat might be grown during the present high prices with fairly satisfactory results. Ordinarily we would not recommend the growing of this crop but very little, if any, in the Coastal Plain Section of the State because this portion of the State is not nearly so well adapted generally to it as the Western half. It is highly important that good seed shall be secured for planting purposes. Of the varieties that are commonly grown Leaps, Proctor, Dixie, McHerron, Fultz, Eagle, Straw, and Palmer have shown up in our tests to be the leading yields.

SERVICES AT THE METHODIST CHURCH

Sunday School 9:30 a. m. Hugh Sloan superintendent.
Preaching Services at 11 a. m. and 7:30 p. m.
The Senior League meets at 6:30.
Prayer services Wednesday 7:30 p. m.
We extend a cordial invitation to you to attend these services.
Rev. W. B. West, Pastor.

PRESBYTERIAN CHURCH SERVICES

Sunday School 9:45 a. m. Organized class for men at 10 o'clock a. m.
11 a. m. Sermon by the pastor Rev. G. F. Mason.
Christian Endeavor meets at 7:00 p. m.
Evening service at 8:00. Sermon by the pastor.
You are cordially invited to all these services. Visitors in the city especially welcome.

WHEN YOU TAKE COLD

With the average man a cold is a serious matter, and should not be trifled with as some of the most dangerous diseases start with a common cold. Take Chamberlain's Cough Remedy and get rid of your cold as quickly as possible. You are not experimenting when you use this remedy, as it has been in use for many years and has an established reputation. It contains no opium or other narcotic. Obtainable everywhere.

DR. J. H. SMATHERS
Surgeon Dentist

All the New Methods used in Surgery.
In new Smathers building near the New Postoffice block.

Dr. Thomas I. Allen
DENTIST

Office up Stairs over First Nat'l Bank
Waynesville, N. C.

AN IDEAL LIME TREATMENT
For those suffering from chronic or acute pulmonary and bronchial troubles, or coughs or colds, is
ECKMAN'S ALTERATIVE
The Calcium preparation which may be taken by the average person without disturbing digestion. An efficient tonic and tissue builder. Contains no Alcohol, Narcotic or Habit-Forming Drug.
\$2 size, now \$1.50. \$1 size, now 80c.
Sold by all leading druggists.
Eckman Laboratory, Philadelphia.

SOUTHERN LOCAL SCHEDULE
Train for Murphy 10:00 a. m.
Train for Asheville 11:45 a. m.
Train for Asheville 4:51 p. m.
Train for Murphy 6:01 p. m.

For Ladies as well as Gentlemen
CITY BARBER SHOP
Main Street
Six Sanitary Chairs and Experienced Barbers
Hot and Cold Baths
"A Good Place to Shave"
Massey, Galloway and White, Proprietors.

In the Purchase of an AUTOMOBILE
There are two points you should consider carefully. These are
Economy and Efficiency
Before you buy let me demonstrate the New Model Chevrolet
C. F. Kirkpatrick
Distributor Chevrolet Motor Co.
Lake Junaluska, North Carolina

SUNDRIED APPLES WANTED
We are in the market to buy the above, and the prospects are that Sun Dried Apples good bright quality will bring good prices. The larger cut and brighter they are the higher price we can pay. The more fruit that is dried and saved the more money for each neighborhood. We wish to hear from parties who expect to have Dried Apples to sell so we can place your name on our mailing list and keep you posted on prices.
S. B. PENICK & CO. INC.
Asheville, N. C. 9-20-41

HIGHEST STILLS
DIAMOND BRAND
Beware of Counterfeits.
LADIES!
Ask your Druggist for HIGHEST STILLS DIAMOND BRAND STILLS. They are Gold metallic boxes, sealed with Blue Ribbon. TAKE NO OTHER. Buy of your Druggist and ask for HIGHEST STILLS DIAMOND BRAND STILLS. For twenty-five years regarded as safe, Always Reliable.
SOLD BY ALL DRUGGISTS
TIME TRIED EVERYWHERE WORTH TESTED.

Depot Barber Shop
When in need of Barber Work
Give us a call. We have a large clean place and good barbers to do your work in a satisfactory manner.
SHOE SHINE STAND
LINER & MASSEY, Props.
Opposite Depot.

Preserve Your Complexion
the easy, pleasing way by using Magnolia Balm before and after outings. You can fearlessly face the sun, wind and dust because you know Magnolia Balm keeps you safe from Sunburn and Tan.
This fragrant lotion is wonderfully soothing, cooling and a great comfort after a day outdoors. Magnolia Balm is the skin-saving beauty secret which is regularly used when once tried.
Magnolia Balm
LIQUID FACE POWDER.
Pink, White, Rose Red.
75c. at Druggists or by mail direct.
Sample (either color) for 2c. Stamp.
Lyon Mfg. Co., 40 South Fifth St., Brooklyn, N. Y.

HYATT & COMPANY
--Dealer in--
BUILDERS MATERIAL
Doors, Sash, Rubberoid Roofing, Finished Lumber, Brick, Lime and Cement.
FEED and COAL
C. S. Meal | Domestic
C. S. Hulls | Furnace
Hay, Grain, Etc | Steam
All orders given prompt attention
"Quality, Price, Service"
Phone 43. Waynesville, N. C. Depot St.

JUNALUSKA SEMINARY
LAKE JUNALUSKA, N. C.
A strictly first class, high grade school for girls and young women.
There will also be a separate school for boys and young men with or without money.
Girls and young women only will live in the Seminary building. There will be a separate home for the boys and young men.
There will be 4 terms of 12 weeks each. The fall term will begin on Tuesday September 4, 1917.
For further information address **J. M. RHODES, Princ.**
Lake Junaluska, N. C.

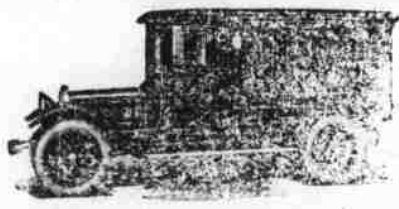
MODEL WHITE PRESSING CLUB
CLEANING, PRESSING, DYEING and REPAIRING
Membership \$1.00 per Month
Ladies' Work a Specialty
Fine Tailoring
J. C. White, Prop.
Dept. St. Phone 15

Notice of Trustee's Sale.

By virtue of the power of sale contained in a certain deed of trust made by C. A. Creed and wife Lular Creed, to the undersigned trustee dated February 11th, 1916, and duly recorded in the office of the Register of Deeds for Haywood County, North Carolina in Book V page 565, default having been made in the payment of the indebtedness secured by said deed of trust whereby the power of sale therein contained has become operative and demand having been made by the holder of the notes, the undersigned trustee will on Tuesday October 30th, 1917, at twelve o'clock noon sell at public auction for cash, at the Court House door in Waynesville, Haywood County, N. C., the following described lands and premises: Beginning at a stake in the west margin of Phillip street, the common corner of lots 23 and 24 and runs thence with the west margin of Phillip street North 100 feet to a stake, the common corner of lots 21 and 22; thence with the line of lots 21 and 22 west 150 feet to a stake, the common corner of lots 9-10-21 and 22 and thence south with the line of lots 9-8-22 and 23 100 feet to a stake, the common corner of lots 7-8-23 and 24, thence east with the line of lots 23 and 24 150 feet to the beginning, being lots 22 and 23 Block "A", of the N. W. Fair property at Canton, N. C., and the same land this day conveyed to the parties of the first part by N. W. Fair and wife, his September 24th, 1917.
W. G. Fortune, Trustee

TIPTON UNDERTAKING CO.

MOTOR HEARSE AND AMBULANCE
FUNERAL DIRECTORS AND EMBALMERS



We take great pleasure in inviting you to inspect our New Morgue And Operating Room. And to offer you its use Free of charge at any time for Post-mortem, Autopsy or for General Research Work.
We are prepared to take care of any and all cases in and out of town. Motor Hearse and Casket Delivery to all parts of the County Free of charge. Two Experienced Funeral Directors. And the charges no more than Careless or Indifferent Service.

PHONES DAY 47 NIGHT. 94 MAIN ST.

TIPTON UNDERTAKING CO.