

Annual Report, Town of Waynesville

FROM MAY 4, 1917, TO MAY 22, 1918

General Fund Receipts From—	
Privilege tax	\$ 881.50
Dog tax	121.01
1915 tax	207.39
1916 tax	994.27
1917 tax	3,602.46
Police court	360.25
Notes renewed	6,766.00
Total	\$12,932.88

Disbursements For—	
Salary to J.S. Mitchell, C.P.	\$ 1,280.00
Sal. to W. A. Whitner, Pol.	925.00
Sal. to C. H. Ray, mayor	150.00
Sal. Jno. M. Queen, Po. Jdg.	33.33
Sal. Jno. M. Queen, mayor	216.66
Sal. J. R. Morgan, Pol. Jdg.	216.66
Sal. W. H. Liner, alderman	50.00
Sal. D. A. Howell, alderman	75.00
Sal. J. R. Thomas, alderman	150.00
Sal. G. C. Platt, alderman	75.00
Sal. H. B. Atkins, alderman	75.00
Sal. Thurman Leatherwood, clerk	150.00
Sal. C. A. Haynes, Treas.	160.00
Sal. Joe Tate, Spec. police	18.25
Sal. H. H. Platt, Spec. police	8.00
Sal. W. J. Haynes, tax list	30.00
Sal. Troy Wyche, tax books	80.00
Sal. J. R. Hyatt, Reg. Elec.	12.00
Sal. Joe Justice, Jdg. Elec.	1.50
Sal. J. A. Smith, Jdg. Elec.	1.50
Rent C. H. Ray	55.00
Notes Pd. 1st Nat. Bank	6,766.00
Interest on bonds	352.00
Interest on notes	347.29
Jail fees	96.73
Prms. on Haynes, Hawk, Mitchell bonds	75.00
Lab. payrolls to W.C. Hawk	433.96
Don. to Waynesv. Library	100.00
Printing	40.45
Supplies	950.55
Total	\$12,932.88

School Fund Receipts From—	
J. D. Everett, tuition	\$ 205.72
J. D. Everett, house rent	50.00
E. J. Robeson, tuition	1,117.25
E. J. Robeson, house rent	112.50
Coal sold	13.16
1916 tax	250.00
1917 tax	6,477.41
Haywood county	2,000.00
Total	\$10,226.04

School Fund Disbursements For—	
Salary white teachers	\$ 6,367.48
Salary colored teachers	707.50
Repairs	188.13
Total	\$ 7,263.11

Interest on notes	102.03
Interest on bonds	250.00
Notes paid	3,400.00
E. L. Withers, Sal. Alder.	75.00
Labor and teams	3,178.01
Total	\$ 8,203.16

Cemetery Fund Receipts From—	
Lots sold	\$ 347.00
Don. W. W. Blackwell	5.00
Don. Jas. W. Reid	3.00
Don. McCracken Clo. Co.	5.00
Don. Waynesville Book Co.	3.00
Don. C. H. Ray	5.00
Don. Miller Bros.	3.00
Don. Lee & Brown	3.00
Don. J. S. Tipton	5.00
Don. W. T. Mehaffey	3.00
Don. W. J. Hannah	5.00
Don. J. R. Morgan	5.00
Don. A. M. Simons	3.00
Don. H. Rotha	2.00
Total	\$ 397.00

Cemetery Fund Disbursements For	
Supplies	\$ 38.25
Labor	304.82
Total	\$ 343.07

Total received from all sources	\$47,048.74
Total disbursements	\$44,992.26
Total cash on hand for Firemen's Relief	171.69
Total cash on hand for Sinking Fund	1,749.85
Total cash on hand subject to check	134.94
Total	\$47,048.74

Respectfully submitted,
C. A. HAYNES,
Treas. Town of Waynesville.

WAR PROHIBITION COMING

Postponement of final action on war prohibition until after the congressional recess was agreed upon by Senate leaders. Assurances given by the dry leaders point to a victory for the temperance forces upon the reconvening of Congress in August. A Washington, D. C., dispatch, dated July 13, follows: "National prohibition legislation was postponed by congress today until August 26, at least. In arranging for a midsummer vacation, a formal unanimous consent agreement was entered into by the Senate to defer until August 26, further consideration of the \$11,000,000 emergency food production bill, containing the amendment for 'bone dry' wartime prohibition, effective New Year's day. As a part of the agreement, however, the prohibition advocates secured the definite pledge that the bill shall have right-of-way when the vacation recess period of the Senate ends. "Senators on both sides of the fight expressed complete satisfaction with the arrangement made after many days' spirited negotiation. "The prohibition advocates are confident that they have a majority to keep in the bill some kind of a drastic wartime production provision soon after vacation ends. Opponents are hopeful that during the coming weeks there may be developments to defeat or modify the legislation."—W. J. Bryan's Commoner.

SERVICES AT ARMY HOSPITAL

Dr. W. M. Sikes, pastor of the Presbyterian church, will conduct religious services at the Government Hospital next Sunday afternoon at 3 o'clock. This is official.

The Waynesville and Annex Pharmacies

M. H. REEVES, Proprietor

PHONES 1 and 16

WAYNESVILLE, N. C.

We take great pride in our two drug stores—not vain pride, but the kind of pride that makes us use every endeavor to please our customers and to make them the best and most reliable drug stores in town.

For instance—take our system of checking when we fill a prescription; it is made up just exactly as it is called for and with a care that precludes all possibilities of error.

Our perfumes, toilet accessories, soaps, powders, and similar articles are sufficient to supply all demands.

Our Royal Ice Cream Parlor—the finest in the state—and our soda fountains at both places are strictly sanitary. We appreciate the patronage of all.

WESTERN N. C. BRIEFS

Mrs. Barbara Cook, aged 70 years, is dead, and Tom Cook, owner of the car; Burt Britton, driver, and Tom Smith were painfully injured late Sunday evening when their Ford automobile collided with Will Pitts' Ford near Arney's church on the new sand-clay road, in Burke county.—Hickory Record.

Returning from an annual hike to Asheville and elsewhere, the Gastonia Boy Scouts paid Marion a visit yesterday morning. They gave fancy exhibition drills on Main street and for half an hour entertained quite a large crowd that watched them with great interest. They were well trained and had an excellent drum corps. There were 23 boys in the troop.—Marion Progress.

Joseph Mull, Sr., aged 81 years, died Friday at his home near Mull's school house.

Mrs. Eliza Ann Kincaid, widow of the late Thomas W. Kincaid, who died 32 years ago, died Friday morning, July 12, after a week's illness.

Ed Huffman, who shot and fatally wounded Elmore Warren, at the Yount cotton mills near Newton last March, was convicted of manslaughter in Catawba Superior court.

Frank Keefer, of Newton, charged with selling poisonous liquors last February, causing the death of two young men from Conover, Garland Bolick and Lloyd Smyre, was found guilty of manslaughter.

The sad intelligence was brought to Morganton Saturday by a telegram to Mrs. P. R. Brown, nee Miss Donnie Cobb, of the death in battle somewhere overseas, of her husband, Dr. Presley Robinson Brown, first lieutenant, ninth infantry, medical department, U. S. A.—Morganton News-Herald.

Deweese Reed and Minder Queen, Cherokee Indians of Birdtown, were united in marriage Tuesday in the Sisk drug store. Dr. C. T. Sisk officiated.

Robert and Ralph Hyatt, while on a fishing trip up Deep Creek recently captured a cub bear which they brought home and are raising as a pet.

Milton Lafayette Sitton, formerly a well known citizen of Swain county, died on Tuesday, July 9, at his new home near Rutledge, Tenn., of Bright's disease.

Sidney Grant, one of the highway crew, was painfully injured on Monday of this week when the Ford car he was driving turned off the road and down a steep bluff into Ocona Luffy river, landing up-side-down in the stream. However, Sidney jumped out before bottom was reached and in doing so probably saved his life, but suffered a dislocation of the shoulder, which has since kept him from work.

Miss Lewellyn Roane, who is well known to many of our people, having lived here and at Whittier nearly all her life, volunteered and has been accepted as a bacteriologist with the American Expeditionary Forces. Until recently Miss Roane has been located in Atlanta but for the past month has been in training in New York state, and ere long will sail for overseas.—Bryson City Times.

WHERE DOES YOUR COUNTY STAND?

The Poorest County Will be That One Which Did Least to Raise Its War Savings Quota.

Where does your county stand? Was it one to raise its quota of War Savings pledges? Has it received its War Savings honor flag, which signifies that it has answered nobly the call of its Government and can be counted on at every call? If not, why not? Are you satisfied with your county's record? Did you do your part in signing the pledge and giving your services to make your county go over in the drive?

Another opportunity is going to be given your county and you to say what you will do. Those who did too little or pledged amounts too small will be given a chance to save their record. Many who have reconsidered since they were called on weeks ago will want to make their pledges larger and their services more liberal and willing. Many since that time have come to know the good investment that War Savings Stamps offer and they are willing to pledge themselves to save more that they may invest more in the best securities on earth. Again, as a result of the drive, many people have come to realize for the first time that they owe their country a debt of gratitude and service. They will seek this opportunity to pay this debt.

No individual, no township, no county can afford not to pay it. None of these can afford not to invest to the utmost in War Savings Stamps, as a mere selfish means of protection after the war. Then will money be scarce, labor cheap, and prices high. The county or the individual that has made no provision for the future will be more than unfortunate. The poorest county as well as the poorest individual after the war will be that one who made the least effort to buy its full quota of War Savings Stamps and other securities offered by the Government. Poor indeed will be the man or county that will have no record of having served his country to the point of sacrifice that it might win the war, when all the history of the war shall have been written.

IT'S UP TO YOU AND ME.

"You and I have got to win this war. Not the other fellow—but you and I. Those of us who are back of the fighting lines must remember that this is where 75 per cent of our country's fighting efficiency must be developed. Every man, woman and child of us can fight here, and if we win our fight at home our soldiers will win theirs in France. Save wisely, not miserly, and invest in Thrift and War-Savings Stamps and you are serving your country in one way that is effective."

Every cent selfishly, thoughtlessly spent, robs our soldiers, robs our own future. Every cent patriotically lent to Thrift Campaigns brings peace.

Please keep your subscription paid up.

HYATT & COMPANY

Dealers in—

BUILDERS MATERIAL

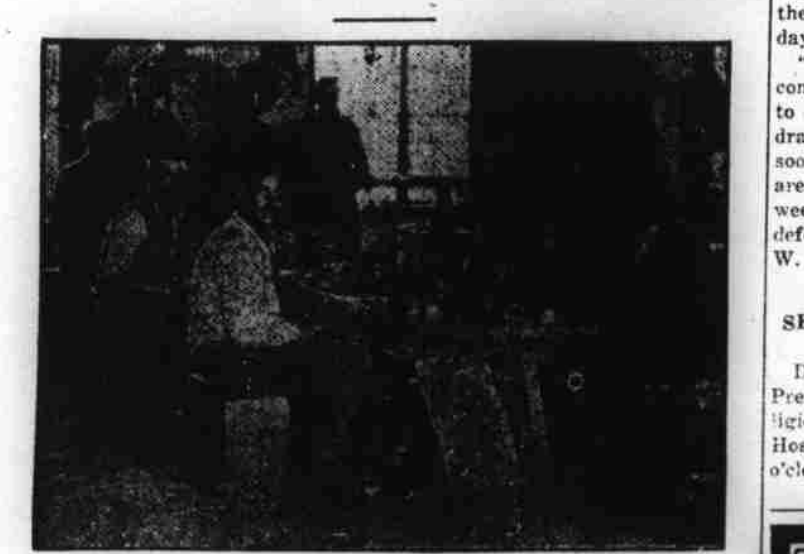
Doors, Sash, Rubberoid Roofing, Finished Lumber, Brick, Lime and Cement.

FEED and COAL

C. S. Meal	Domestic
C. S. Hulls	Furnace
Hay, Grain, Etc	Steam

All orders given prompt attention
"Quality, Price, Service"
Phone 43. Waynesville, N. C. Depot St.

ABLE MEN ARE WANTED BY Y. M. C. A. FOR RUSSIA



American Y. M. C. A. Workers Teach Returned Russian Soldiers Useful Trades

With the Government at Washington prepared to lend economic and philanthropic support to Russia, the National War Work Council of the Y. M. C. A. is actively recruiting to reinforce the Red Triangle workers already manning huts over there. Agricultural experts, physical directors and regular Y. M. C. A. secretaries as well as other men familiar with warfare work in communities are being sought.

A further consideration of a definite policy toward Russia has served virtually as a "go-ahead" order to the association. The Y. M. C. A., through all uncertainties of the past few months, has kept 100 of its secretaries in Russia. These men have been kept busy day and night in an effort to build up the morale of the citizens and soldiers of the unfortunate country. The secretaries today are in all parts of Russia.

In the dark days of Russia the American secretaries "stood by" all over that country to serve the people in every way possible. Thousands of invalid prisoners were taken care of as they returned from Germany. Most all the men were broken in health. They died, almost without exception, with curses against Germany. But greater even than their hatred was their wonder that their countrymen could have made "peace" with such an enemy.

"The Y. M. C. A. leaders in Russia," said Dr. W. W. Alexander, director of the War Personnel Board of the Southeastern Department, National War Work Council, "have never doubted the essential soundness of the Russian people. Despite all difficulties and inevitable losses and discouragements, the Y. M. C. A. has remained in Russia, seeking to serve and watching for a better day. The day is now evidently coming."

Fifteen new secretaries, with ability to contribute some constructive element to the Russian life of the future are being searched for throughout the Southeastern Department. Some agriculturists are wanted, some business men, but the call comes stronger for men skilled in rural Y. M. C. A. and Community work. All are to go with the purpose of helping Russia help herself.

American Woman Furthest Front

(By Delayed Cable from Chateau Thierry Front With American Forces in France.)—Mrs. Clara Simmons, Grafton, Mass., woman Y. M. C. A. worker furthest front, placidly runs canteen while shells drop in adjoining field. Makes hot chocolate and distributes cookies to men going into action. Military policeman killed by shell near her hut. Husband with Y. M. C. A. forces in Vladivostok, Russia.

It Helps!

There can be no doubt as to the merit of Cardui, the woman's tonic, in the treatment of many troubles peculiar to women. The thousands of women who have been helped by Cardui in the past 40 years, is conclusive proof that it is a good medicine for women who suffer. It should help you, too.

Take CARDUI

The Woman's Tonic

Mrs. N. E. Varner, of Hixson, Tenn., writes: "I was passing through the ... My back and sides were terrible, and my suffering indescribable. I can't tell just how and where I hurt, about all over. I think ... I began Cardui, and my pains grew less and less, until I was cured, and I am remarkably strong for a woman 64 years of age. I do all my housework."—The Women's Tonic, p. 2.

THAT ANNOYING, PERSISTENT COUGH
that will not clear up, or even get the chest open, is usually a sign of a serious condition. It is often the first sign of a lung trouble. It is often the first sign of a heart trouble. It is often the first sign of a kidney trouble. It is often the first sign of a liver trouble. It is often the first sign of a stomach trouble. It is often the first sign of a nervous system trouble. It is often the first sign of a general weakness. It is often the first sign of a chronic disease. It is often the first sign of a fatal illness. It is often the first sign of a life-threatening condition. It is often the first sign of a medical emergency. It is often the first sign of a health crisis. It is often the first sign of a medical disaster. It is often the first sign of a health catastrophe. It is often the first sign of a medical calamity. It is often the first sign of a health disaster. It is often the first sign of a medical emergency. It is often the first sign of a health crisis. It is often the first sign of a medical disaster. It is often the first sign of a health catastrophe. It is often the first sign of a medical calamity. It is often the first sign of a health disaster. It is often the first sign of a medical emergency. It is often the first sign of a health crisis. It is often the first sign of a medical disaster. It is often the first sign of a health catastrophe. It is often the first sign of a medical calamity. It is often the first sign of a health disaster. It is often the first sign of a medical emergency. It is often the first sign of a health crisis. It is often the first sign of a medical disaster. It is often the first sign of a health catastrophe. It is often the first sign of a medical calamity. It is often the first sign of a health disaster. It is often the first sign of a medical emergency. It is often the first sign of a health crisis. It is often the first sign of a medical disaster. It is often the first sign of a health catastrophe. It is often the first sign of a medical calamity. It is often the first sign of a health disaster. It is often the first sign of a medical emergency. It is often the first sign of a health crisis. It is often the first sign of a medical disaster. It is often the first sign of a health catastrophe. It is often the first sign of a medical calamity. It is often the first sign of a health disaster. It is often the first sign of a medical emergency. It is often the first sign of a health crisis. It is often the first sign of a medical disaster. It is often the first sign of a health catastrophe. It is often the first sign of a medical calamity. It is often the first sign of a health disaster. It is often the first sign of a medical emergency. It is often the first sign of a health crisis. It is often the first sign of a medical disaster. It is often the first sign of a health catastrophe. It is often the first sign of a medical calamity. It is often the first sign of a health disaster. It is often the first sign of a medical emergency. It is often the first sign of a health crisis. It is often the first sign of a medical disaster. It is often the first sign of a health catastrophe. It is often the first sign of a medical calamity. It is often the first sign of a health disaster. It is often the first sign of a medical emergency. It is often the first sign of a health crisis. It is often the first sign of a medical disaster. It is often the first sign of a health catastrophe. It is often the first sign of a medical calamity. It is often the first sign of a health disaster. It is often the first sign of a medical emergency. It is often the first sign of a health crisis. It is often the first sign of a medical disaster. It is often the first sign of a health catastrophe. It is often the first sign of a medical calamity. It is often the first sign of a health disaster. It is often the first sign of a medical emergency. It is often the first sign of a health crisis. It is often the first sign of a medical disaster. It is often the first sign of a health catastrophe. It is often the first sign of a medical calamity. It is often the first sign of a health disaster. It is often the first sign of a medical emergency. It is often the first sign of a health crisis. It is often the first sign of a medical disaster. It is often the first sign of a health catastrophe. It is often the first sign of a medical calamity. It is often the first sign of a health disaster. It is often the first sign of a medical emergency. It is often the first sign of a health crisis. It is often the first sign of a medical disaster. It is often the first sign of a health catastrophe. It is often the first sign of a medical calamity. It is often the first sign of a health disaster. It is often the first sign of a medical emergency. It is often the first sign of a health crisis. It is often the first sign of a medical disaster. It is often the first sign of a health catastrophe. It is often the first sign of a medical calamity. It is often the first sign of a health disaster. It is often the first sign of a medical emergency. It is often the first sign of a health crisis. It is often the first sign of a medical disaster. It is often the first sign of a health catastrophe. It is often the first sign of a medical calamity. It is often the first sign of a health disaster. It is often the first sign of a medical emergency. It is often the first sign of a health crisis. It is often the first sign of a medical disaster. It is often the first sign of a health catastrophe. It is often the first sign of a medical calamity. It is often the first sign of a health disaster. It is often the first sign of a medical emergency. It is often the first sign of a health crisis. It is often the first sign of a medical disaster. It is often the first sign of a health catastrophe. It is often the first sign of a medical calamity. It is often the first sign of a health disaster. It is often the first sign of a medical emergency. It is often the first sign of a health crisis. It is often the first sign of a medical disaster. It is often the first sign of a health catastrophe. It is often the first sign of a medical calamity. It is often the first sign of a health disaster. It is often the first sign of a medical emergency. It is often the first sign of a health crisis. It is often the first sign of a medical disaster. It is often the first sign of a health catastrophe. It is often the first sign of a medical calamity. It is often the first sign of a health disaster. It is often the first sign of a medical emergency. It is often the first sign of a health crisis. It is often the first sign of a medical disaster. It is often the first sign of a health catastrophe. It is often the first sign of a medical calamity. It is often the first sign of a health disaster. It is often the first sign of a medical emergency. It is often the first sign of a health crisis. It is often the first sign of a medical disaster. It is often the first sign of a health catastrophe. It is often the first sign of a medical calamity. It is often the first sign of a health disaster. It is often the first sign of a medical emergency. It is often the first sign of a health crisis. It is often the first sign of a medical disaster. It is often the first sign of a health catastrophe. It is often the first sign of a medical calamity. It is often the first sign of a health disaster. It is often the first sign of a medical emergency. It is often the first sign of a health crisis. It is often the first sign of a medical disaster. It is often the first sign of a health catastrophe. It is often the first sign of a medical calamity. It is often the first sign of a health disaster. It is often the first sign of a medical emergency. It is often the first sign of a health crisis. It is often the first sign of a medical disaster. It is often the first sign of a health catastrophe. It is often the first sign of a medical calamity. It is often the first sign of a health disaster. It is often the first sign of a medical emergency. It is often the first sign of a health crisis. It is often the first sign of a medical disaster. It is often the first sign of a health catastrophe. It is often the first sign of a medical calamity. It is often the first sign of a health disaster. It is often the first sign of a medical emergency. It is often the first sign of a health crisis. It is often the first sign of a medical disaster. It is often the first sign of a health catastrophe. It is often the first sign of a medical calamity. It is often the first sign of a health disaster. It is often the first sign of a medical emergency. It is often the first sign of a health crisis. It is often the first sign of a medical disaster. It is often the first sign of a health catastrophe. It is often the first sign of a medical calamity. It is often the first sign of a health disaster. It is often the first sign of a medical emergency. It is often the first sign of a health crisis. It is often the first sign of a medical disaster. It is often the first sign of a health catastrophe. It is often the first sign of a medical calamity. It is often the first sign of a health disaster. It is often the first sign of a medical emergency. It is often the first sign of a health crisis. It is often the first sign of a medical disaster. It is often the first sign of a health catastrophe. It is often the first sign of a medical calamity. It is often the first sign of a health disaster. It is often the first sign of a medical emergency. It is often the first sign of a health crisis. It is often the first sign of a medical disaster. It is often the first sign of a health catastrophe. It is often the first sign of a medical calamity. It is often the first sign of a health disaster. It is often the first sign of a medical emergency. It is often the first sign of a health crisis. It is often the first sign of a medical disaster. It is often the first sign of a health catastrophe. It is often the first sign of a medical calamity. It is often the first sign of a health disaster. It is often the first sign of a medical emergency. It is often the first sign of a health crisis. It is often the first sign of a medical disaster. It is often the first sign of a health catastrophe. It is often the first sign of a medical calamity. It is often the first sign of a health disaster. It is often the first sign of a medical emergency. It is often the first sign of a health crisis. It is often the first sign of a medical disaster. It is often the first sign of a health catastrophe. It is often the first sign of a medical calamity. It is often the first sign of a health disaster. It is often the first sign of a medical emergency. It is often the first sign of a health crisis. It is often the first sign of a medical disaster. It is often the first sign of a health catastrophe. It is often the first sign of a medical calamity. It is often the first sign of a health disaster. It is often the first sign of a medical emergency. It is often the first sign of a health crisis. It is often the first sign of a medical disaster. It is often the first sign of a health catastrophe. It is often the first sign of a medical calamity. It is often the first sign of a health disaster. It is often the first sign of a medical emergency. It is often the first sign of a health crisis. It is often the first sign of a medical disaster. It is often the first sign of a health catastrophe. It is often the first sign of a medical calamity. It is often the first sign of a health disaster. It is often the first sign of a medical emergency. It is often the first sign of a health crisis. It is often the first sign of a medical disaster. It is often the first sign of a health catastrophe. It is often the first sign of a medical calamity. It is often the first sign of a health disaster. It is often the first sign of a medical emergency. It is often the first sign of a health crisis. It is often the first sign of a medical disaster. It is often the first sign of a health catastrophe. It is often the first sign of a medical calamity. It is often the first sign of a health disaster. It is often the first sign of a medical emergency. It is often the first sign of a health crisis. It is often the first sign of a medical disaster. It is often the first sign of a health catastrophe. It is often the first sign of a medical calamity. It is often the first sign of a health disaster. It is often the first sign of a medical emergency. It is often the first sign of a health crisis. It is often the first sign of a medical disaster. It is often the first sign of a health catastrophe. It is often the first sign of a medical calamity. It is often the first sign of a health disaster. It is often the first sign of a medical emergency. It is often the first sign of a health crisis. It is often the first sign of a medical disaster. It is often the first sign of a health catastrophe. It is often the first sign of a medical calamity. It is often the first sign of a health disaster. It is often the first sign of a medical emergency. It is often the first sign of a health crisis. It is often the first sign of a medical disaster. It is often the first sign of a health catastrophe. It is often the first sign of a medical calamity. It is often the first sign of a health disaster. It is often the first sign of a medical emergency. It is often the first sign of a health crisis. It is often the first sign of a medical disaster. It is often the first sign of a health catastrophe. It is often the first sign of a medical calamity. It is often the first sign of a health disaster. It is often the first sign of a medical emergency. It is often the first sign of a health crisis. It is often the first sign of a medical disaster. It is often the first sign of a health catastrophe. It is often the first sign of a medical calamity. It is often the first sign of a health disaster. It is often the first sign of a medical emergency. It is often the first sign of a health crisis. It is often the first sign of a medical disaster. It is often the first sign of a health catastrophe. It is often the first sign of a medical calamity. It is often the first sign of a health disaster. It is often the first sign of a medical emergency. It is often the first sign of a health crisis. It is often the first sign of a medical disaster. It is often the first sign of a health catastrophe. It is often the first sign of a medical calamity. It is often the first sign of a health disaster. It is often the first sign of a medical emergency. It is often the first sign of a health crisis. It is often the first sign of a medical disaster. It is often the first sign of a health catastrophe. It is often the first sign of a medical calamity. It is often the first sign of a health disaster. It is often the first sign of a medical emergency. It is often the first sign of a health crisis. It is often the first sign of a medical disaster. It is often the first sign of a health catastrophe. It is often the first sign of a medical calamity. It is often the first sign of a health disaster. It is often the first sign of a medical emergency. It is often the first sign of a health crisis. It is often the first sign of a medical disaster. It is often the first sign of a health catastrophe. It is often the first sign of a medical calamity. It is often the first sign of a health disaster. It is often the first sign of a medical emergency. It is often the first sign of a health crisis. It is often the first sign of a medical disaster. It is often the first sign of a health catastrophe. It is often the first sign of a medical calamity. It is often the first sign of a health disaster. It is often the first sign of a medical emergency. It is often the first sign of a health crisis. It is often the first sign of a medical disaster. It is often the first sign of a health catastrophe. It is often the first sign of a medical calamity. It is often the first sign of a health disaster. It is often the first sign of a medical emergency. It is often the first sign of a health crisis. It is often the first sign of a medical disaster. It is often the first sign of a health catastrophe. It is often the first sign of a medical calamity. It is often the first sign of a health disaster. It is often the first sign of a medical emergency. It is often the first sign of a health crisis. It is often the first sign of a medical disaster. It is often the first sign of a health catastrophe. It is often the first sign of a medical calamity. It is often the first sign of a health disaster. It is often the first sign of a medical emergency. It is often the first sign of a health crisis. It is often the first sign of a medical disaster. It is often the first sign of a health catastrophe. It is often the first sign of a medical calamity. It is often the first sign of a health disaster. It is often the first sign of a medical emergency. It is often the first sign of a health crisis. It is often the first sign of a medical disaster. It is often the first sign of a health catastrophe. It is often the first sign of a medical calamity. It is often the first sign of a health disaster. It is often the first sign of a medical emergency. It is often the first sign of a health crisis. It is often the first sign of a medical disaster. It is often the first sign of a health catastrophe. It is often the first sign of a medical calamity. It is often the first sign of a health disaster. It is often the first sign of a medical emergency. It is often the first sign of a health crisis. It is often the first sign of a medical disaster. It is often the first sign of a health catastrophe. It is often the first sign of a medical calamity. It is often the first sign of a health disaster. It is often the first sign of a medical emergency. It is often the first sign of a health crisis. It is often the first sign of a medical disaster. It is often the first sign of a health catastrophe. It is often the first sign of a medical calamity. It is often the first sign of a health disaster. It is often the first sign of a medical emergency. It is often the first sign of a health crisis. It is often the first sign of a medical disaster. It is often the first sign of a health catastrophe. It is often the first sign of a medical calamity. It is often the first sign of a health disaster. It is often the first sign of a medical emergency. It is often the first sign of a health crisis. It is often the first sign of a medical disaster. It is often the first sign of a health catastrophe. It is often the first sign of a medical calamity. It is often the first sign of a health disaster. It is often the first sign of a medical emergency. It is often the first sign of a health crisis. It is often the first sign of a medical disaster. It is often the first sign of a health catastrophe. It is often the first sign of a medical calamity. It is often the first sign of a health disaster. It is often the first sign of a medical emergency. It is often the first sign of a health crisis. It is often the first sign of a medical disaster. It is often the first sign of a health catastrophe. It is often the first sign of a medical calamity. It is often the first sign of a health disaster. It is often the first sign of a medical emergency. It is often the first sign of a health crisis. It is often the first sign of a medical disaster. It is often the first sign of a health catastrophe. It is often the first sign of a medical calamity. It is often the first sign of a health disaster. It is often the first sign of a medical emergency. It is often the first sign of a health crisis. It is often the first sign of a medical disaster. It is often the first sign of a health catastrophe. It is often the first sign of a medical calamity. It is often the first sign of a health disaster. It is often the first sign of a medical emergency. It is often the first sign of a health crisis. It is often the first sign of a medical disaster. It is often the first sign of a health catastrophe. It is often the first sign of a medical calamity. It is often the first sign of a health disaster. It is often the first sign of a medical emergency. It is often the first sign of a health crisis. It is often the first sign of a medical disaster. It is often the first sign of a health catastrophe. It is often the first sign of a medical calamity. It is often the first sign of a health disaster. It is often the first sign of a medical emergency. It is often the first sign of a health crisis. It is often the first sign of a medical disaster. It is often the first sign of a health catastrophe. It is often the first sign of a medical calamity. It is often the first sign of a health disaster. It is often the first sign of a medical emergency. It is often the first sign of a health crisis. It is often the first sign of a medical disaster. It is often the first sign of a health catastrophe. It is often the first sign of a medical calamity. It is often the first sign of a health disaster. It is often the first sign of a medical emergency. It is often the first sign of a health crisis. It is often the first sign of a medical disaster. It is often the first sign of a health catastrophe. It is often the first sign of a medical calamity. It is often the first sign of a health disaster. It is often the first sign of a medical emergency. It is often the first sign of a health crisis. It is often the first sign of a medical disaster. It is often the first sign of a health catastrophe. It is often the first sign of a medical calamity. It is often the first sign of a health disaster. It is often the first sign of a medical emergency. It is often the first sign of a health crisis. It is often the first sign of a medical disaster. It is often the first sign of a health catastrophe. It is often the first sign of a medical calamity. It is often the first sign of a health disaster. It is often the first sign of a medical emergency. It is often the first sign of a health crisis. It is often the first sign of a medical disaster. It is often the first sign of a health catastrophe. It is often the first sign of a medical calamity. It is often the first sign of a health disaster. It is often the first sign of a medical emergency. It is often the first sign of a health crisis. It is often the first sign of a medical disaster. It is often the first sign of a health catastrophe. It is often the first sign of a medical calamity. It is often the first sign of a health disaster. It is often the first sign of a medical emergency. It is often the first sign of a health crisis. It is often the first sign of a medical disaster. It is often the first sign of a health catastrophe. It is often the first sign of a medical calamity. It is often the first sign of a health disaster. It is often the first sign of a medical emergency. It is often the first sign of a health crisis. It is often the first sign of a medical disaster. It is often the first sign of a health catastrophe. It is often the first sign of a medical calamity. It is often the first sign of a health disaster. It is often the first sign of a medical emergency. It is often the first sign of a health crisis. It is often the first sign of a medical disaster. It is often the first sign of a health catastrophe. It is often the first sign of a medical calamity. It is often the first sign of a health disaster. It is often the first sign of a medical emergency. It is often the first sign of a health crisis. It is often the first sign of a medical disaster. It is often the first sign of a health catastrophe. It is often the first sign of a medical calamity. It is often the first sign of a health disaster. It is often the first sign of a medical emergency. It is often the first sign of a health crisis. It is often the first sign of a medical disaster. It is often the first sign of a health catastrophe. It is often the first sign of a medical calamity. It is often the first sign of a health disaster. It is often the first sign of a medical emergency. It is often the first sign of a health crisis. It