

NOTICE!

OF FORECLOSURE SALE

By the virtue of the power in me vested by a certain deed of trust bearing date the 30th day of May, 1927, executed by T. J. Wild and wife, to me as trustee, to secure a debt to W. B. and Joe Randall, Recorded in Book 32 at page 208 of Records of Deeds of Madison County. Default having been made in the payment of the debt secured, and having been requested to foreclose said deed of trust under power therein, I will, on the 2nd day of February, 1929, sell to the highest bidder at public auction, for cash at the court house door in the town of Marshall, Madison County, N. C., to satisfy said judgment, interest and cost, the following described real estate, to-wit:

Lying and being in Madison County, N. C., adjoining lands of G. W. Wild and others, Beginning on a locust in the mouth of the line between Gabriel Wilds and the Carver house, and runs South 52 West 30 poles to a stake at the creek a little north of small branch below the road, thence N 78 West 40 poles to the top of the ridge to a small chestnut oak, thence North 23 West 14 poles to two small chestnuts, thence North 59 West 10 poles to a chestnut oak, N. 35 West 12 poles to a small dogwood, N 80 West 45 poles to a chestnut on top of Fork mountain, thence S 52 West 18 poles to a chestnut, being J. R. Wilds corner, thence down the ridge with his line, S. 16 E. 17 poles to a stake, thence South 42 East 36 poles to a stake, thence S 55 E 20 poles to a stake, thence S 51 E 23 poles to a large chestnut in the mouth of the line near the creek, thence S 34 E 48 poles via oak stump at the road to stump and stake, thence N 53 E 82 poles to a stake, then N 34 W 48 poles to the beginning, containing 50 acres, more or less, excepting about 10 acres sold to Kennedy Worley.

This the 26th day of December, 1928. C. B. MASHBURN, Trustee O-Jan. 25, 1929

NOTICE!

MAGISTRATE'S SUMMONS.

NORTH CAROLINA, Justice's Court No. 2 Township, Madison County. Before A. S. Gentry, Justice of the Peace.

CIVIL ACTION

Stokley Cutshall, Plaintiff, against Robert Reeves, Defendant

To any Constable or other lawful officer of said county—Greeting:

You are hereby commanded to summon Robert Reeves to appear before A. S. Gentry, Justice of the Peace, at his office in No. 2 Township, County of Madison on the 22 day of January 1929, at 2 o'clock P. M., to answer the complaint of the above named plaintiff, for the nonpayment of the sum of eighty-five dollars, and interest until paid, due and demanded by said plaintiff, and for costs.

Herein fail not, and of this summons make due return.

Witness my hand, this 22 day of December, 1928.

A. S. GENTRY, Justice of the Peace. O-Jan-18-29.4t. pd.

A little girl was teaching her dolls a Sunday School lesson. "Children," she said, "you know God made Adam and he was lonely; so God put him to sleep and took out his brain and made a lady."—Ex.

KILLS THE ITCH IN 40 MINUTES

A new remedy in liquid form called PARACIDE penetrates the skin and destroys the itch mite. Being liquid PARACIDE acts quickly. Kills the Itch in 40 minutes. At Drug Stores or mailed to you prepaid for 50 cents the bottle.

STANDARD DRUG CO., Asheville, N. C.

NOTICE!

By virtue of the power of sale contained in a certain deed of trust made to N. B. McDevitt Co., by J. G. Briggs and wife, Laura Briggs, on the 8th day of December, 1920 to the undersigned trustee and duly registered in the office of the Register of Deeds of Madison County, N. C., in book 22 on page 134 to which reference is hereby made, and default having been made in the indebtedness thereby secured, whereby the power of sale therein contained has become operative, the said undersigned Trustee will on the 14th day of January, 1929 at 12 o'clock, noon, at the Court House door of Madison County, sell to the highest bidder for cash the following described lands and premises to satisfy said indebtedness:

Being the lands conveyed by A. E. Anders and wife Attia Anders and M. J. Anders by deed dated January 26th, 1914 and recorded in the office of Register of Deeds for Madison County in Deed Book No. 30 at page 579, for full and complete description reference is hereby made. Contains 45 acres more or less.

This December 20, 1928. O-Jan. 11, 1929. W. A. WEST, Trustee.

NOTICE!

By virtue of the power of sale contained in a certain deed of trust made by H. B. Lance and wife, Bernice Lance, and Harry Hill, and wife, Kathryn T. Hill, to F. H. Lance, Trustee, dated 8th day of November, 1926, and duly registered in Book 32, page 109 of the record deed in trusts in the office of Register of Deeds of Madison County to which reference is hereby and default having been made in the payment in the payment of the indebtedness secured by said deed of trust whereby the power of sale therein contained has become operative said undersigned trustee will on the 23rd day of January, 1929 at 12:00 o'clock noon, sell at public auction for cash at the Court House door of Madison County, and state of North Carolina the following lands and premises; situate, lying and being in the county of Madison No. nine Township, adjoining the lands of Harry Hill, Hugh Lance and others, described as follows:

Beginning on a small locust on top of the Mill ridge and running East 40 poles to a double dogwood on side of said ridge; thence South 58 poles to a small branch; thence with the meanders of said branch to H. B. Lance's and Harry Hill's N. E. corner to Z. B. Anderson's corner; thence north; thence continuing with said road North 21 poles East 78 poles to the beginning, containing 18 acres, be the same more or less.

This the 20th day of Dec., 1928. F. H. LANCE, Trustee. O-Jan. 11, 1929. ch.

NOTICE OF SALE

UNDER EXECUTION

North Carolina, Madison County, In Magistrate's Court. Hilliard King, Emmet Thomas and E. L. Thomas, Plaintiffs,

Vs. Robert Reeves, Defendant.

By virtue of an execution to the undersigned from A. C. Gentry's Magistrate's Court, of Madison County in the above entitled action, I will sell, on Tuesday, January 8, 1929, at 10 o'clock, A. M., at the barn of Robert Reeves place at Belva, N. C., Madison County, to the highest bidder for cash to satisfy said execution, all the right, title and interest which the said Robert Reeves, the defendant has in the following described personal property:

Said property consists of one crop of tobacco now in barn on Robert Reeves farm.

This December 10, 1928. MITCHEL GENTRY, Sheriff. O-Jan.-4,-29.

Mr. Badrut of the Palace of St. Moritz tells a story of one of his waiter's linguistic difficulty and professional pride. There was a very slight earthquake felt in St. Moritz on one occasion and on the same day a genial visitor, on taking his seat at table, remarked to the waiter:

"Well, you have earthquakes here, do you?"

"Earthquakes," beat Giuseppe, but he would not admit anything that he thought implied in the hotel.

"Oh, yes, sare," he replied, "we do have them, but they are not quite ripe yet. They have been ordered from Zurich, and should be here next week."—Tatler (London).



Surry County farmers say they can produce enough milk to get one of the Kraft cheese factories similar to the one now at West Jefferson in Ashe County.

When a village youth makes a flying trip to the city he usually has a bird of a time.

Weigh some people and they will be found wanting in everything except weight.

When a man is going to the dogs he usually meets the dogs about half way.

Smilin' Charlie Says—



"You wonder why grandmother wore five or six petticoats?—Did any of you young ladies ever try sittin' on a haircloth chair?"

SOUTHERN RAILWAY SYSTEM

Southern Passenger Train Schedules For Marshall, N. C. Changes Schedule

Passenger trains now due at Marshall as follows:

(CENTRAL TIME)

No. 101 West Bound at 6:21 A. M.

No. 11 West Bound at 1:25 P. M.

No. 27 West Bound at 7:57 P. M.

No. 28 East Bound at 8:10 A. M.

No. 12 East Bound at 12:16 P. M.

No. 102 East Bound at 7:30 P. M.

NOTE:—Marshall time makes these figures one hour later.

This schedule published as information and not guaranteed. Consult the Ticket Agents for further information.

NOTICE:—Ticket office closes at 4:00 P. M. (Central Time). Passengers using evening trains will, please purchase tickets before that time.

J. H. WOOD, Div. Pass. Agt. Asheville, N. C.

O. S. BRADFORD, Agent. Marshall, N. C.

Green Feed Needed For Winter Eggs

Green feed added to the laying hen's ration in winter has increased egg production and has proven profitable wherever used.

When the green feed pasture is exhausted with the coming of frost and cold weather, it is then necessary for the poultryman to provide such feed, recommends C. F. Parrish, poultry extension specialist at State College. There is a wide variety of feeds a

Many a man who calls himself conservative is only a coward. A man's gratitude is always its best just before you do him a favor. Luck is the trump card played by a fool.

that may be used to avoid monotony. Rape, alfalfa, oats, clover, wheat, rye, barley, mangels and other feeds may be used. Sprouted oats are also used effectively by some growers. The oats are fed when the sprout is about three inches long and make an excellent succulent to supplement the scratch grain and mash.

Mr. Parrish says that it is not difficult to build a home-made oat-sprouter. All that is needed is a number of trays with holes punched in the bottom to allow excess water to escape. The seed oats are spread thinly over the trays to prevent the formation of mold growths. Sprouted oats secured in this manner are fed at the rate of from one to two ounces per day per hen. A good producing hen will consume from 25 to 30 pounds of this feed in a winter.

Hanging cabbage about 18 inches from the floor will afford the laying hen needed exercises and will give her the succulent green feed needed. Beets may be used the same way.

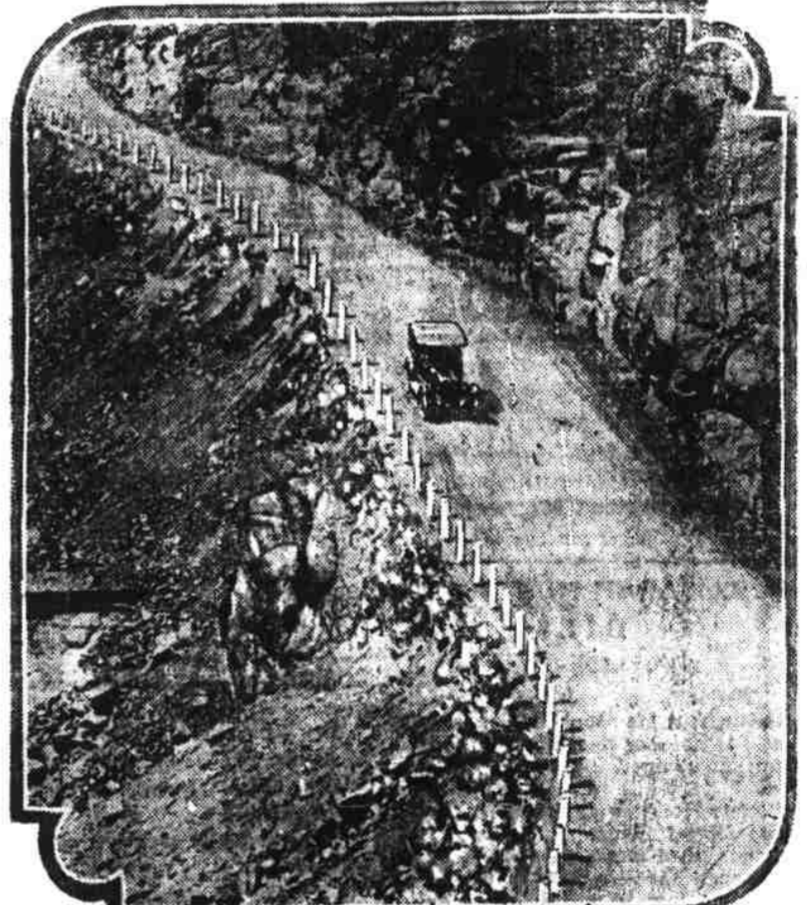
When it is impossible to supply green feed, cod-liver oil may be mixed with the mash or grain ration to supply the same food elements. In mixing this oil with the feed, Mr. Parrish suggests that a small amount of the feed be taken and the cod-liver oil worked in thoroughly and this used as a stock mixture with the remaining food. One pint of the oil to each 100 pounds of feed is enough to use.

Many a man who calls himself conservative is only a coward. A man's gratitude is always its best just before you do him a favor. Luck is the trump card played by a fool.

Many a man who calls himself conservative is only a coward. A man's gratitude is always its best just before you do him a favor. Luck is the trump card played by a fool.

MOTORISTS ARGUE FOR ADDITIONAL SAFETY MEASURES ON HIGHWAYS

Convince Officials of Perils on Many Crowded Roads—Prevention of Dust an Important Matter to Be Considered.



The White Painted Guard Rails Help to Make Curves Safe for the Motorist.

DESPITE the increase in the use of white painted guard rails, whitewashed traffic indicators of one sort or another and more elaborate danger signals, automobile accidents are steadily growing more numerous, automobile associations point out in reviewing the summer's casualties.

The next great important step to reduce the number of accidents will be the elimination of dust, in the opinion of those associations.

Dust, in spite of the greater mileage of concrete roads, is causing many accidents, a condition due in part to the constantly growing highway congestion.

High winds and passing cars raise dust clouds that have been compared with the smoke screens of naval destroyers. Through that screen the average motorist must guess his way and trust to luck that no one is directly in his path, the automobile associations assert.

In some sections of the country, where motorists have been able to convince officials of the perils in dust-covered highways, the authorities are applying chemicals to the road surface, particularly calcium chloride, a moisture-absorbing material that lays the dust. The prevention of dust is unquestionably a large factor in any safety first campaign.

CHRIST FOR ALL—ALL FOR CHRIST

By word and deed, and a light unto the world. BIBLE THOUGHT AND PRAYER. If parents will have their children memorize a Bible selection each week, it will prove a priceless heritage to them in after years.

JESUS SAID:—Blessed are the pure in heart; for they shall see God.—Matthew 5:8.

PRAYER:—Enable us, O Lord, to come to Thee, and do Thou wash us and make us clean every one every whit that this great blessing may now be ours.

How did the chief priests make sure the Sepulchre in which the body of Jesus was placed?—Matt. 27:66.

NOTICE!

NORTH CAROLINA, MADISON COUNTY.

NOTICE TO CREDITORS

Having qualified as administrator of the estate of Tillery J. Wild, deceased, late of Madison County, N. C., this is to notify all persons having claims against the estate to present the same to the undersigned at his office at Big Pine, N. C., and all persons owing said estate any indebtedness are hereby notified to make immediate payments of the same to the undersigned. This notice will be pleaded in bar of any and all claims not presented to the undersigned within one year from and after this date.

This December 24th, 1928. G. W. WILD, Administrator of estate of T. J. Wild, deceased. O-Feb. 1, 1929.

NOTICE!

NOTICE OF SALE

Under and by virtue of an order of the Superior Court of Madison County made in the special proceeding entitled "Boisey Tweed, Executor of Giliard Tweed, deceased, against Lena Shelton, Myrtle Shelton et al, the same being No. 190 B on the special proceeding docket of said court, the undersigned Commissioner will, on the 4th day of February, 1929, at 1 o'clock P. M. at the courthouse door in Marshall, North Carolina, offer for sale to the highest bidder for cash that certain tract of land lying and being in No. 2 Township, Madison County North Carolina, on the waters of Shelton-Laurel, joining the lands of Dr. Eva M. Locke, Mason Banks and others and bounded as follows:

BEGINNING on a pine, the southeast corner of the lands of Mason Banks and Dr. Eva M. Locke, then down the ridge to a chestnut 46 poles, then down the hill a northeast direction to the bridge 15 poles, then up the road to the old railroad across the creek 8 poles in the center of the road, then up the railroad track on the north side of the hill 42 poles to a stake, then north to the Middle Laurel Church Corner 12 poles, then West with the Middle Laurel Church line to the line of Mason Banks and Dr. Eva Locke, then with their line to the beginning corner on top of Big Hill Ridge, containing about 7 acres more or less.

This the 2nd day of January, 1929. JOHN A. HENDRICKS, Commissioner.

O-Jan. 25, 1929.

Smilin' Charlie Says—



"There's this much about winter—we know it ain't bathin' suits th' girls are wearin'!"

THE FAMILY NEXT DOOR

"The Perfect Man."

