



# THE NEWS-RECORD



VOL. 67 NO. 33

10 PAGES THIS WEEK

MARSHALL, N. C., THURSDAY, AUGUST 15, 1968

10c PER COPY

\$3.00 A Year In Madison and Adjoining Counties  
\$4.00 A Year Outside These Counties

## Tomato Time Underway; Contestants Register

Voting Starts Today At 11 Business Firms In Marshall

Marshall's Tomato Time promotion is underway. It started this (Thursday) morning and will continue through Saturday, August 24. On Saturday night, August 31, a Tomato Queen, Tomato Princess and Little Miss Toma-toe will be announced at a talent show to be given in the Marshall school auditorium.

In addition to the honor of winning the title, each winner will receive a \$50 award, it was announced.

Registration ended with only four girls entering the Tomato Queen contest. 20 girls are entered in the Tomato Princess contest and 22 girls are in the Little Miss Toma-toe contest.

For each \$1 purchase or paid on account at the 11 participating firms, you may receive a card on which to write down your favorite contestant's name. A list of contestants will be posted in each firm giving tickets. The girl receiving the largest number of votes in each category will be declared the winner.

Although not giving tickets, the Citizens Bank is helping sponsor the event.

Firms participating are: French Broad Chevrolet Company, Penland & Sons, Wild's Radio and TV Service, McKinney's, Home Electric & Furniture Co., National 5c & 10c Store, Marshall Thrift Store, Roberts Pharmacy, Penland Fashions, Service Motor Sales, Inc., Edwards Cleaners.

## TOMATO TIME CANDIDATES

TOMATO QUEEN:

Cathy Banks, Brenda Gosnell, Becky Reid, Linda Haynie.

TOMATO PRINCESS:

Myra Ann Flynn, Linda Faye Norton, Linda Ledford, Marilyn Wyatt, Sheila Gean Ogle, Sharrri Denis Deal, Brenda J. Gosnell, Sharon Kent, Carol Fore, Treasa Gibson, Donna Sue McDevitt, Vickie Charmaine Rice, Denise Allen, Sherie Lynn Roberts, Victoria Childs, Charlotte Loretta Shook, Anna Flynn, Caroleen Buckner, Yvonne Coates, Diane Bailey.

LITTLE MISS TOMA-TOE:

Tammy Brown, Gina Michelle Plemmons, Tina Brown, Dean Young, Joy Peverall, Delora Marie Norton, Annette Messer, Debbie Lynn Buckner, Donna Gail Norton, Renne Cole, Donna Sue Tipton, Delilah Mae Norton, Linda Kay Ray, Judy Elaine Jackson, Tammy Jean Roberts, Sheryl Lynn Connor, Beth Ann Shipman, Linda Ray, Donna K. Deal, Lisa Renea Ogle, Renee Wyatt, Deborah Capps.

SELF-MADE

It often happens that the fellow who thinks he's a genius can't think of anything else.

## DR. WOOD IS NEW COUNTY HEALTH DIRECTOR

Highly Recommended; Is A Resident Of Asheville

Dr. Barbara Wood has accepted the position as Madison County Health Director, succeeding Dr. Margery Lord, who recently retired.

Dr. Wood is a graduate of New York Medical College, New York City and completed her internship and residency at Rochester, New York.

She has been a resident of Asheville since 1952 and has been associated in the past with the Buncombe County Health Department.

In private life, Dr. Wood is married to Harris E. Smith who is associated with Inland Press in Asheville. The Smiths, who reside at 5 Howland Road in Asheville, have five children.

"We feel most fortunate in having a person of Dr. Wood's caliber and experience as our new County Health Director," members of the local department stated.

## SOIL TEST SHOWS NEED FOR LIME

Farmers often overlook the importance of lime on pasture and meadow land. Six Madison County farmers took soil samples from pasture land in the fall of 1967 to see what the soil needed for best results. Most of the fields tested by these farmers had not been limed during the past several years. Every field tested by the farmers needed between one and one-half to three tons of lime per acre to bring the pH level up to a positive level.

Research work in mountain counties proved that by using lime needed on native pasture the yield could be increased by almost one third.

Fall months are more suitable for liming our steep land than spring months, because the land is usually dry and safer to get over. Fall applications also have time to move into the soil and is ready to aid in plant growth the following spring.

## THE SCOREBOARD

The sum of a man's intentions and accomplishments equals his true character.

## One Killed, 18 Are Injured In Bus-Truck Wreck Friday

## Lasseter New Local Anti-Poverty Head

Mars Hill Pastor



Rev. Richard E. Price

## PRICE IS NEW PASTOR OF MARS HILL CHURCH

Native Of Alabama Will Begin Duties September First

The Rev. Richard E. Price, Jr., of Laurinburg, has accepted an invitation to become pastor of the Mars Hill Baptist Church effective September 1.

The 112-year-old church, adjacent to the campus of Mars Hill College, has been without a minister since June 1, when Dr. Elmer West resigned to accept a post with the Christian Life Commission of the Southern Baptist Convention.

Mr. Price, 42, has been pastor of the First Baptist Church in Laurinburg since 1960. Prior to that he was pastor of the First Baptist Church in Radford, Va., for six years.

A native of Florence, Alabama, he was reared in Corinth, Miss. He served in the Navy during World War II and earned a B.A. degree at Mississippi College in 1949. He attended Southern Baptist Theological Seminary in Louisville, Ky., earning the Bachelor's degree.

(Continued to Last Page)

Effective On September 9; Succeeds Ora A. Spaid

R. Hugh Lasseter, acting administrator of the Atlanta regional office of the Office of Economic Opportunity, has accepted the position of executive director of the Opportunity Corporation of Madison-Buncombe Counties, effective Sept. 9.

Lasseter accepted the position in a telegram to Herbert K. Hyde, chairman of the anti-poverty agency's Personnel Committee. The committee had formally offered the \$17,500 position to Lasseter after he was elected by the Corporation's board of directors at a meeting July 25.

Lasseter's acceptance of the job culminates a six-month search by the Corporation to replace Ora A. Spaid, who resigned after serving as the agency's executive director since its inception in November, 1964.

Spaid's resignation was to be effective May 31, but he remained after that at the request of the Board until a successor could be found.

(Continued To Page Two)

## RESERVOIR ON HILL CATCHES ON FIRE MON.

We're not kidding! The reservoir on the mountain near Radio Station WMMH actually caught on fire Monday afternoon about three o'clock but quick work by members of the WMMH staff, the Youth Corps, and local firemen put out the blaze quickly.

Some local jokesters accused Dean Shields of setting fire to the reservoir but Dean denies it. "I was asked to watch a fire that had been started near the reservoir to burn down some underbrush but guess I became lax and the first thing I knew the fire had reached a rafter of the reservoir which holds up the metal roof. Fortunately no water was burned and very little scorched," Shields laughingly reported.

## Here From Vietnam

Sp/5 Lane Ramsey, son of Mr. and Mrs. Ralph Ramsey, of Marshall, arrived here Saturday from Vietnam where he has been stationed for over a year. He has volunteered for six more months' duty in Vietnam and will return there in about six weeks.

## Occurs On A Blind Curve; Bus Passengers Removed Through Windows

By LARRY C. CORN Citizen Staff Writer

A Greyhound bus en route from Asheville to Knoxville, Tenn., collided with a tractor-trailer about 8:40 a. m., last Friday killing one man and injuring 18 persons.

Dead in the mishap on U. S. 25-70 at Cold Springs, about eight miles northwest of Marshall, was Stanley Richmond of Philadelphia, Pa., operator of a Sharpe Motor Lines rig loaded with veneer.

The bus driver, Charles A. Holcombe of Asheville, was the most seriously injured of the 18, who were all passengers aboard the bus. Holcombe was admitted to Memorial Mission Hospital in Asheville with chest and abdominal injuries. Six others were also admitted to Asheville hospitals.

State Highway Patrolman E. D. Young said the mishap occurred on a blind curve about a mile west of Walnut. He said the lack of tire marks left on the road by the truck indicated that the driver apparently fell asleep or his brakes failed.

Witnesses said the truck was traveling at a high rate of speed and hit the left front of the bus, spinning it around and over a 40 foot embankment.

A passerby, J. C. Wallin of Madison County, said bus passengers had to be removed through windows because of a damaged door. He said it took an hour or more to get the passengers out. Stretchers had to be pulled up to road level with ropes.

Joining in the rescue efforts were sheriff's deputies, highway patrolmen, the Madison County Rescue Squad and volunteers. Ambulances arrived at the scene from as far away as Greenville, Tenn. Pickup trucks and private autos were called into service to help carry the injured to Asheville.

An unidentified doctor stopped at the accident and administered first aid. A nurse, who was riding the bus, also assisted the injured though injured herself.

In addition to Holcombe, the injured admitted to Memorial Mission were:

James Swain, 72, Knoxville, fractured leg and lacerations.

Mrs. Louise Harris, 54, Hopkinsville, Ky., fractured leg.

Eleanor Carpenter, 57, Asheville, abdominal and chest injuries.

Valeria Thurston, 58, St. Louis, Mo., lacerations and chest injuries.

Mrs. Wilma Andrews, 45, Algona, (Continued to Page Two)

## Birchfiel Recommends Consolidation Of Schools

170 At Educational Staff Meeting Here On Wednesday

"I would highly recommend consolidation of schools in Madison County as soon as possible so that our children might have adequate facilities to receive the best education possible," Dr. Guy Birchfiel, coordinator for Title III project in this county, told principals, teachers and guests here Wednesday.

More than 170 persons attended the luncheon meeting held in the Marshall school cafeteria, including in addition to principals and teachers, members of the ESEA personnel, board of education, news media, and others. This was the first assembling of county teachers for the new term.

Robert L. Edwards, superintendent, presided and recognized guests who included Mrs. Ruth Conrad, reading specialist at Appalachian State University.

Miss Jencie Underwood, county (Continued To Last Page)

## LOW-INCOME FAMILIES ARE ASSISTED BY FHA

Many Madison County low-income rural people have increased buying power as a result of federal loans, according to Vernon H. Rankin, Assistant County Supervisor of the local FHA office.

They used the loans, Rankin said, to develop small businesses and improve their farming operations.

The opportunity loans are part of the federal anti-poverty program, which Congress enacted three years ago. The loan program is administered by the Farmers Home Administration for the Office of Economic Opportunity.

Low-income rural people, through the local Farmers Home Administration office, may receive loans up to \$3,500 to develop income-producing businesses or to enlarge farming operations. Borrowers may take up to 15 years to repay the loan.

For the first time Rankin said, people who could never before qualify for loans, now can get the money they need to develop or expand a business enterprise or a farming operation.

## SHORT-COUNT

When opportunity does knock for some people, all they can produce is a bob-tailed flush.

D. M. Robinson and Bill Ferguson.

It was pointed out that the Buncombe-Madison Opportunity Corporation would assist in any way possible but would not direct the activities. It was further stated that Mrs. Marietta Subart, OC official, would be detached to the committee to help in the planning of needs in Madison County.

The next meeting will be held at Mars Hill College on September 4, at 1:30 p. m.

## MODEL MADISON MEETING HELD IN MARS HILL

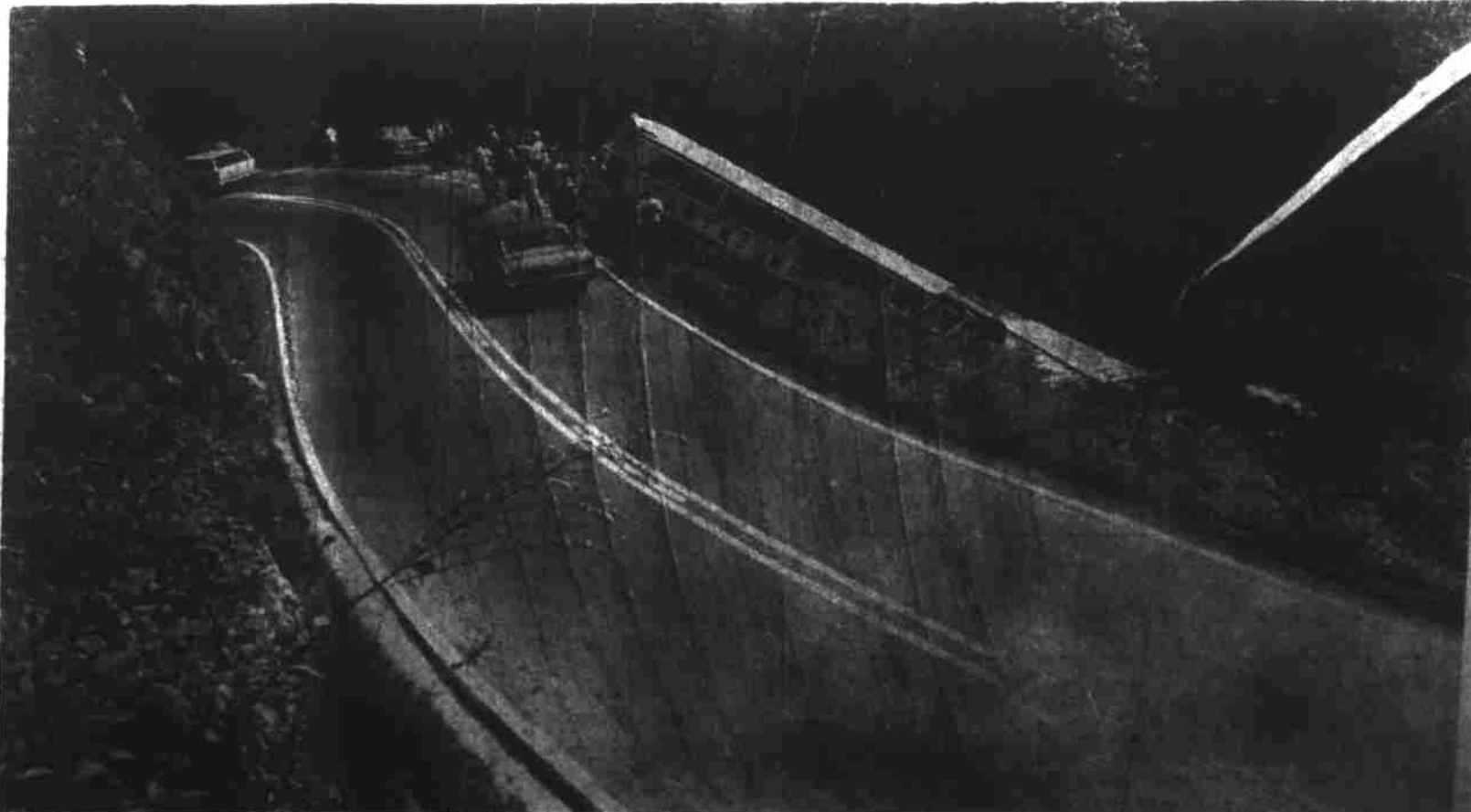
Lewis Rudisill Is Elected Temporary Chairman Of Group

Approximately 30 persons attended a meeting for the "Model Madison" steering committee at Mars Hill College Wednesday afternoon.

Lewis Rudisill, of Marshall, was elected temporary chairman of the organization and W. B. Zink, of Mars Hill, was elected temporary vice-chairman. L. D. Hyde, of Asheville, presided.

An Incorporation Committee was elected, composed of Bruce Briggs, Richard Hoffman and Rev. A. V. Graves.

A By-Laws Committee was named, composed of C. E. Mashburn,



Some of fatal wreck with one dead and eighteen injured last Friday