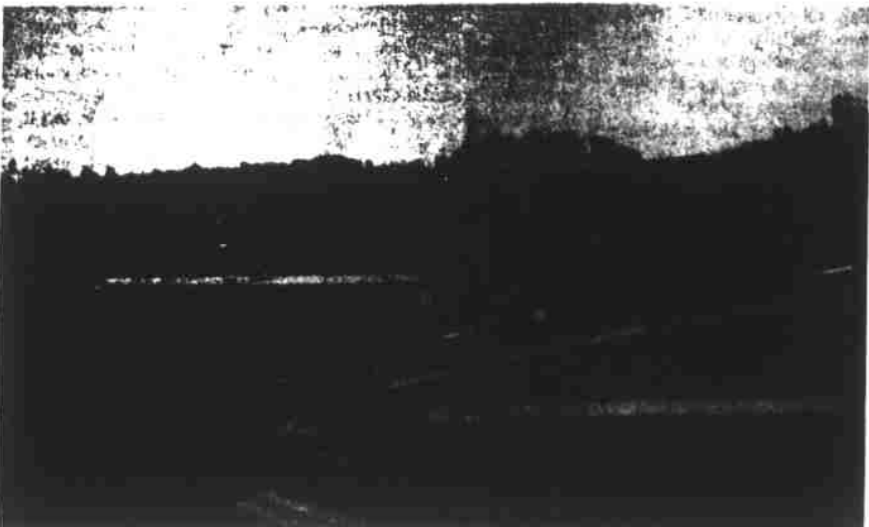


1973 Events



MARS HILL'S "NEW" FIRE TRUCK is pictured at right. This truck is used solely within the corporate limits except in rare cases. The truck on left is the 1961 pumper which is still in use.



ANOTHER ADDITION JUST OFF THE Marshall by-pass is a new road under construction from the shopping center to the county school bus garage and to Mato, shown above. On right is the Farm Credit Bureau building.



THE GRAND OPENING OF BILL HODGE'S WESTERN AUTO STORE on Main Street here was held last Thursday morning. Pictured above (top photo) shows Mayor Lorado Ponder clipping the ribbon which officially opened Marshall's newest business. Others in picture are, left to right, Troy Ramsey, C. W. Boykin, territorial sales manager; Bill Hodge, owner; Mayor Ponder; Emery Metcalf, Faye Reid, Gary Ealey, Maurice McAllister, and Maynard Cody.



PICTURES ABOVE were taken in the Marshall library last Thursday afternoon when Manly Wade Wellman, author of "The Kingdom of Madison," autographed over 60 copies at open house from 3:00-5:00. Standing around the well-known author in top picture, left to right, Mrs. Grover Redmon, Mrs. C.E. Mashburn, Mrs. E.C. Teague, Mrs. Arthur Thomas and Mrs. Moser. Bottom photo shows, left to right, Ernest Snelson, Mrs. Evelyn Davis, Mrs. Grover Redmon, J.J. Bailey, Father A.V. Graves and Mrs. H.B. Webb. Mrs. Webb, of Durham, is also an author and writer. Wellman is seated at table.



CONSOLIDATED HIGH SCHOOL starts to "grow" on the Marshall by-pass as picture above reveals. Shown is one of the units of the school taking shape. Tons of bricks, steel and other materials are on the site as construction continues, although delayed at times by inclement weather.

LIST YOUR TAXES Now

Notice is hereby given that the List Takers for Madison County will sit at the following places at the time and places listed below. All property owners and taxpayers are required to return to the List Takers for taxation, for the year 1974, all the Real Estate and Personal Property which each one shall own on the first day of January or shall be required to give in then. Return of property is required, under the pains and penalties imposed by law.

All Motor Vehicles Will Be Checked Against State Registration Cards.

There will be NO EXTENSION of time given unless an emergency arises.

ALL TAXES MUST BE LISTED DURING THE MONTH OF JANUARY

Following are the List Takers for 1974 With Dates and Listing Places:

T 1 W 1 MARSHALL MRS. VALERIE SHELTON

January - Each Monday, Tuesday - Thursday
Friday - Saturday at Courthouse. Weekdays 9 to 4
30, Saturdays 8:30 to 12.

T 1 W 2 LITTLE PINNAC SANDY MUSH, MRS. IRENE TEAGUE

Sat. January 5 - Little Sandy Mush Voting Pl
Sat & Monday, January 12 & 14 Marshall Court
House Sat. January 19, Davis Grocery 9 to 4
January 26, Clarence Roberts Grocery 9 to 4

T 2 LAUREL MRS. BETHEL WALLIN (BLANCE)

Clarence C. Cutshalls Store January 2 & 30.
Reuben Gosnell's Store at Revere, January 5.
Earl Rice's Store, January 9
Rance Hensley's Store, January 12
Ward Rice's Store, January 16
Fred Shelton's Store January 19
Hubert Cutshalls's Store, January 26
Delmos Cook's Store, January 23
All other times at home

T 3 W1 MARSHALL MRS. HARDIE MERILL

January - Each Monday, Tuesday - Thursday
Friday & Saturday 9 to 4 at TOWN HALL.

T 3 W 2 PETERSBURG MRS. DOLPH PEEK

January 1, 2, 5, & 30 OAK GROVE CHURCH
January 9, 10, & 12 SILVERS STORE
January 16, 19 & 31 PENDER SHOOK
GROCERY
January 23, 26 & 26 H. C. CODY'S STORE
All other times at Home

T 4 BEECH GLEN NAT BLANKENSHIP

January 4 & 5 HUNTERS STORE
January 12 MAYNARDS STORE
January 19 FRANK MANEYS
January 26 FRED RICE'S
All other times at home.

T 4 OLD NO. 5 HARRIS BALL

January 4, 5, 12 SLUDER'S STORE
January 19, FRANK MANEY'S STORE
January 25 & 26, SLUDER'S STORE
All other days at home

T 5 WALNUT CARL WALLIN

January 7 - MARTIN SERVICE STATION
January 8 & 15 - JOHNSTON'S SELF-Service
January 9 - DEAN RIGSBY'S Service Station
January 11 - FOREST RANGERS STATION
January 14 - BRIGMAN'S STORE
January 16 & 21 - JAMES D. BROWN'S STORE
All other times at home.

T6 HOT SPRINGS MRS. BETTY FOWLER

CAROLINA GROCERY STORE - January 5, 7, 9,
11, 12, 14, 16, 18, 19, 21, 23, 25, 26, 28 & 30 from 9 to 4
except Wednesdays - 9 to 12. All other nights at home.

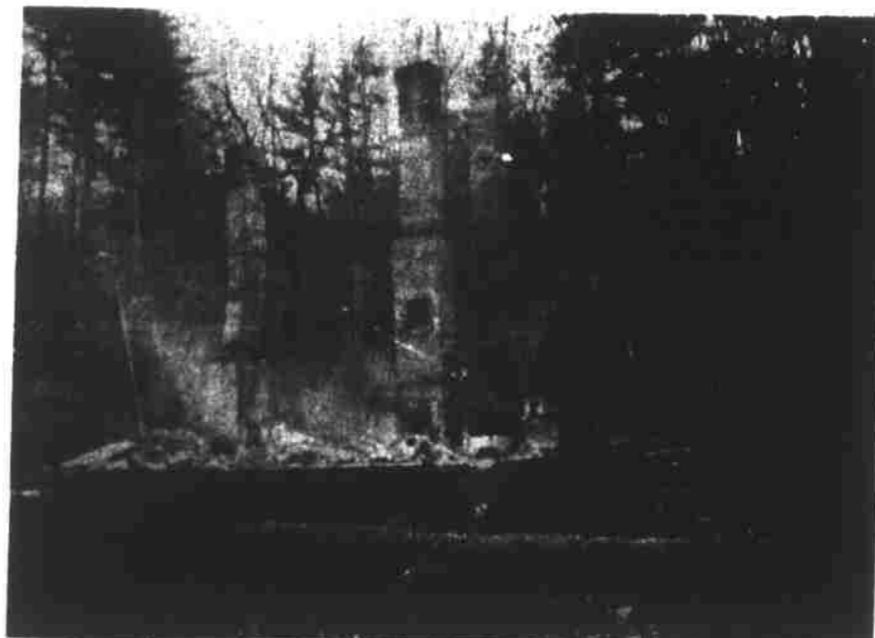
T 7 EBBS CHAPEL MRS. BARBARA HONEYCUTT

Paul Honeycutt's Store, January 5 & 26
Ziska Ingle's Store & Station, January 12
Kermit Hensley's Store, January 19
Hours 8 a.m. to 5 p.m.
All other days at home.

T 8 SPRING CREEK MRS. MEDIA ASKEW

January 3 BILL MOORE'S STORE
January 7 S. F. PLEMMON'S STORE
January 10 ALTON PRICE'S STORE
January 13 T. J. MEADOWS STORE
January 17 LEO WILLET'S STORE
January 19 JOE JUSTICE STORE
January 24 HOMER PLEMMON'S
All other times at home.

Harold Wallin, Tax Supervisor



THE SMOLDERING REMAINS of the beautiful Fred O. Tilson Home are shown above. The two-story house, over 100 years old, was destroyed by fire late Friday night despite efforts of firemen and volunteers to extinguish the flames. No one was injured and the six pet dogs and a cat were rescued unharmed. The home was located on Highway 213 between Marshall and Mars Hill.

GIANT AMARYLLIS IS BACK—IN A DELFT POT



There's good news for gardening buffs and flower lovers. Imported giant amaryllis bulbs—one of nature's most delightful sights—are in supply again. These bulbs bloom indoors during the winter, and can be moved outdoors in the summer.

Aptly, they're called "Dutch Delight." In short supply all year, a relatively ample quantity of red amaryllis bulbs are now available at many Florists' Transworld Delivery (FTD) shops in hand-painted blue delft pots imported from Holland. It is the first in a series of the famous delft vases.

What makes the amaryllis a blooming phenomenon is that "you can almost hear it growing," as florists put it. Once the stalk starts developing, it shoots up about one-half inch a day, often reaching two feet in height.

The "Dutch Delight" now at FTD florists has the largest blooms of all amaryllis hybrids. Individual blooms grow five to six inches in diameter. Watching the



large, dramatic flowers begin to open is a fascinating sight. Another plus is their long life. Bulbs should last many years, with proper care. A top-grade bulb should produce two flower stalks with at least four blooms on each. Flowers appear about six to eight weeks after potting in the fall.

This is one reason why amaryllis bulbs have long been a popular gift item. They're especially popular with shut-ins.

Approved artistically, they can give one the reputation of being a blooming genius!



Normally, we don't make much noise about our savings plans. But our new 6 1/2% Savings Certificate is worth shouting about. It takes only \$500 minimum to open. Funds must remain on deposit for a minimum of 2 1/2 years. It's a great way to make it big with your savings.

(Incidentally, ask about our new 5% Regular Savings, our 5 1/2% Golden Feedback Savings, and our one year 6% Savings Certificate too.)

Marshall **FIRST UNION NATIONAL** Weaverville