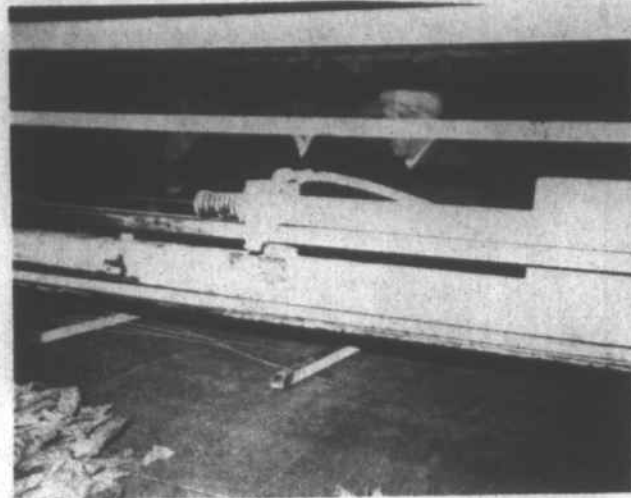




TOBACCO divided into three grades beginning trip through stripping machine.



STRIPPED LEAF moving toward "handlers."



INA METCALF, Route 3, Mars Hill, shown feeding tobacco into his stripping machine.

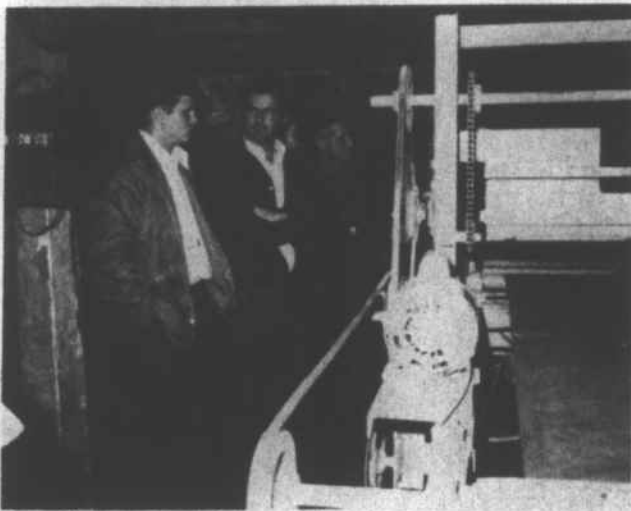


FURMAN FOX helping hand tobacco as it comes through stripping machine.

### Bentley Named To Council

Dr. Fred Bentley, president of Mars Hill College, and Harvey Haynes, president of Asheville-Buncombe Technical Institute, have been elected to the executive council of the commission on colleges of the Southern Association of Colleges and Schools.

The association is the chief accrediting agency for schools, both private and public, within 11 southeastern states and Latin America. It encompasses approximately 600 member schools and is dedicated to the improvement of higher education in the region.



LEFT TO RIGHT, Jimmy Ramsey, Maynard Cody and Nealey Bradburn watching stripping machine in operation.

## Stripping Burley By Machine

By WILEY DUVALL  
Agricultural Extension Agent

demonstrating to tobacco companies and growers in the State of Kentucky.

This invention is a great step forward in the handling of burley tobacco. We in Madison

County should feel very proud that one of our own has been responsible for this progress.

Burley tobacco has been stripped and graded by hand since the beginning. There have been very few changes in the way burley is produced or marketed. The stripping operation requires approximately 40 man hours of labor per acre of tobacco. Ina Metcalf intends to change this process.

Ina lives on Long Branch in the Big Laurel section of Madison County. He has invented and patented a machine which does a remarkable job of stripping tobacco into three grades. In its present form, the machine will strip 60 sticks of tobacco per hour. It can be modified to handle up to 240 sticks per hour. At the lower rate, one could strip an acre of tobacco in two days. The higher rate would strip two acres in one day.

Metcalf is now stripping the second crop with his machine. He feels it is ready to market. All leaves are stripped cleanly from the stalk, leaving the suckers intact. The stalk is removed from the premises, and the stripped leaf is ready for "handing" or dropping into a sheet. If and when burley goes to a loose leaf type of sale, the machine will provide even more labor savings.

During the last week of December, Ina will be

### "Nativity" At White Rock Saturday

The "Nativity" Scene will be presented at the White Rock Presbyterian Church this Saturday night at 7:30.

A social hour will follow the program and refreshments will be served. The public is cordially invited.

Mt. Kilimanjaro rises 19,340 feet and is the highest mountain peak in Africa.

### Holiday Traffic Warning

Edward L. Powell, commissioner of motor vehicles, announced today that the official observance of the Christmas holiday traffic period will begin at 6 p.m. on Dec. 23, and end at midnight Dec. 26.

Powell said, "With the arrival of the holiday season comes a period generally high in traffic accidents, due to increased travel, adverse weather conditions and early darkness." Statistics for the five-day Christmas holiday last year showed that driving under the influence and speeding were major factors in traffic accidents and fatalities.

Twenty-three persons lost their lives last Christmas and 1,031 were injured in 1,677

accidents on North Carolina streets and highways.

## \$250.00 In Trade Certificates To Be Given Away Friday at Courthouse 3:00 P.M.

### You Must Be Present To Win!

Most of the firms listed below are giving tickets for \$1.00 purchases or paid on account. Sign your name and address on back of tickets and deposit them in participating stores.

### FINAL DRAWING

Sponsored By  
Marshall Merchants Association

FOURTH DRAWING FRIDAY, DEC. 24 \$250.00

The Following Firms In Marshall Cooperating:

Cody Motor Sales  
Houston Brothers  
Pioneer Ford, Inc.  
Home Elec. & Furniture  
Roberts Pharmacy  
Marshall Thrift Store  
Dodson Grocery  
Bowman Hardware  
Penland's Fashions  
Penland & Sons  
National 5c & 10c Store  
Dixie Grocery  
Bowman Funeral Home  
Joe's Junque  
R & R Outlet  
Teague Milling Co.  
News-Record & Story Prt. Co.  
City Oil Co.  
Dawn Edwards Oil Co.  
Whitehurst-Griffin Agency

Wachovia Bank  
Fox Tire Service  
Radio Station WMMH  
N.C. Farm Bureau Ins.  
Davis Gulf Station  
Wayne Ramsey Auto Parts  
French Broad EMC  
Edwards Cleaners  
French Broad Chevrolet  
Wild's Radio & TV  
O.A. Gregory, Inc.  
Beautytime Shop  
Balsam Beauty Shop  
Nationwide Ins.  
Don's Auto Parts  
Ponder's Auto Supply  
Variety Shop  
Shadyside Florists  
Coal, Feed & Lbr. Co.  
First Union Nat'l



It's Christmastime

Let joy enter your hearth and home.

Suburban Propane

GENE SANFOP  
TERRITORY REPRESENTATIVE  
12 MULVANEY STREET  
ASHEVILLE, N.C. 28903  
OFFICE: 704-772-1111  
HOME: 648-9111



### O, Holy Night

May that special star that guided the Wise Men to the manger, shine forever more in the heart of all mankind. Our thanks to you at this blessed Yuletide

COAL FEED & LUMBER CO.

Marshall



A Merry Christmas

Thanks to our many kind and thoughtful friends. May your holiday overflow with happy surprises!

DON'S AUTO PARTS

Marshall

# notice to TAXPAYERS

Pay Your Taxes During December At Par

THE NEW STATE LAW REQUIRES TWO PER CENT PENALTY FOR TAXES PAID AFTER DECEMBER 31, 1976

Pay Your Taxes NOW And Avoid Penalty

HAROLD H. WALLIN  
Madison County Tax Collector