



CHRISTMAS exhibit, colorful Crafts. display by Laurel Mountain



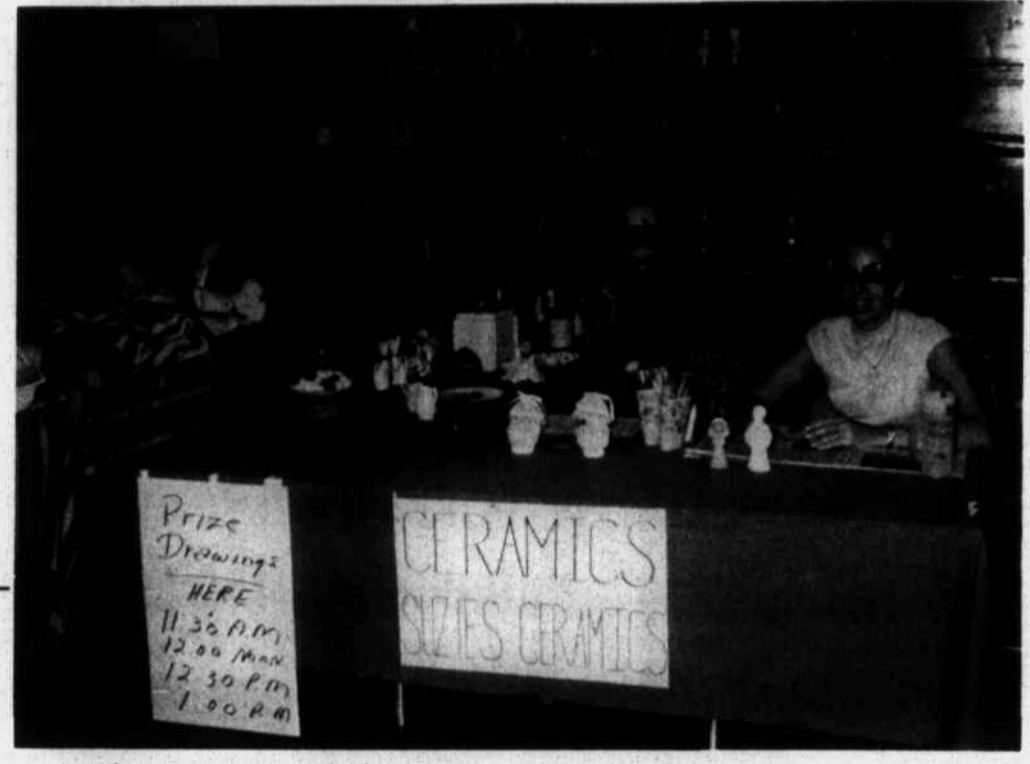
NELLIE DUCKETT, of Spring Susan Gardner, also of Spring Creek, shown at spinning wheel. Little girl seated by Nellie is

MOUNTAIN HANDCRAFT

VARIOUS CRAFT DISPLAYS were among the highlights at the annual French Broad Electric Membership Corporation meeting on the Island here last Saturday. Hundreds of persons enthusiastically viewed the assortments of craftsmanship which included pine cone arrangements and corn shuck dolls by Lizzie Payne; rug hooking by Marian Anderson; shakes and wooden toys by Lloyd Fish; quilting by Lura Fish; spinning by Nellie Duckett. (The above were from the Craft Program of the Opportunity corporation of Madison and Buncombe counties); also on display were Susie's Ceramics; bark baskets by Peter Gott; dolls by Deborah West; Christmas exhibit by Laurel Mountain Crafts; Country Boutique; pottery by the McWhirters.



MRS. LIZZIE PAYNE shown seated at her display of pine cone arrangements and corn shuck dolls. Standing is her husband, M. W. Payne of Hamburg Road, Paint Fork. At right are ladies from the Celo Community of Yancey County with their display.



SUSIE'S CERAMICS, shown owner, of Marshall. above, with Mrs. Enele Boone,

how to dial direct and save

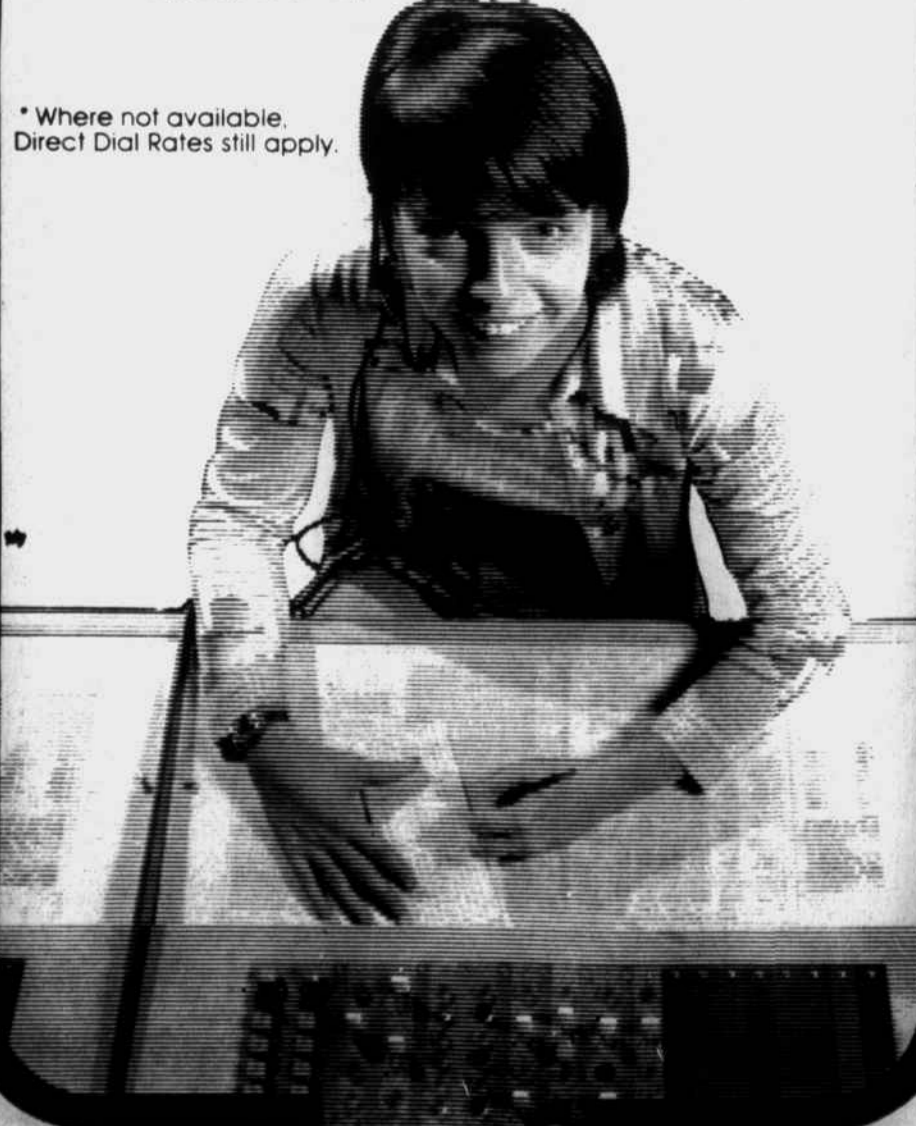
Continental operators like Gwen Lewis would like to remind you that dialing direct where available * ...and making your out-of-state calls station-to-station...lower your long distance phone costs.

Dial your access code, the area code (if different from yours), then the number. This eliminates the need for operator assistance and passes the savings on to you.

You'll save even more by using lower long distance evening and weekend rates. Check your directory for details.

Westco Telephone Company
A member of Continental Telephone System
An Equal Opportunity Employer

* Where not available, Direct Dial Rates still apply.



Wheat

Continued from Page 1

Whether the wheat has been sold, placed under loan with the Commodity Credit Corporation, or is stored on or off the farm does not have any bearing on a farmer's eligibility for the payment," Slade said.

Slade added that under farm program legislation currently being considered in both the Senate and the House of Representatives this deficiency payment provision is being continued.

Wheat farmers here in Madison County who would like to have further information on the wheat deficiency payment provisions of the current program relative to their farm should contact the Madison County ASCS Office or an ASC County Committee Member.

FOR SALE

1972 FURY III
Good running condition, good tires, automatic power brakes, power steering, air conditioned.
Phone 649-2811 or see at Penland & Sons Dept. Store, Main St., Marshall.

Life insurance for **small budgets**

We have a policy for people who think they can't afford life insurance. Call today.



ROY E. REEVES
Box 502
Marshall, N.C. 28753
649-2011

NATIONWIDE INSURANCE
Nationwide is on your side
Nationwide Life Insurance Company
Home Office: Columbus, Ohio

Glidden house paint FACTORY SALE

per gallon

\$7.99 (either one)



regular \$12.99

SAVE \$5.00 per gallon

Glidden's Best Flat Latex house paint

- Quick drying, durable flat finish
- Resists blisters, peeling, mildew
- Easy water clean-up



regular \$13.99

SAVE \$6.00 per gallon

Glidden's Best Latex gloss house and trim paint!

- Chalk resistant, semi-gloss finish
- Quick drying, easy to use
- Easy water clean-up

LEDFORD & ANDERSON
AUTO PARTS & HOME DECORATING CENTER
Hwy. 19E Mars Hill, N.C.