

THE NEWS RECORD

SERVING THE PEOPLE OF MADISON COUNTY

On the Inside . . .

Look For Christmas
Shopping Specials
Inside This Edition

79th Year No. 49

PUBLISHED WEEKLY IN THE COUNTY SEAT AT MARSHALL, N.C.

THURSDAY, December 4, 1980

15¢ Per Copy

Electricity Would Be Sold To French Broad EMC

Capitola May Generate Power Again

EDITOR'S NOTE: Last week's article on the Capitola Dam project incorrectly stated the project was proposed by the Tennessee Valley Authority and the U.S. Army Corps of Engineers. The project is being proposed by the French Broad Electric Membership Corporation.



The French Broad Electric Membership Corporation is moving ahead in its effort to reactivate the Capitola Dam in Marshall. The dam was previously used and will be used again to divert the flow of the French Broad River to generate electric power.

Although approximately 225 acre-feet of water is stored by the dam over a surface area of about 25 acres, the power

generation scheme is "run of the river." The dam was not constructed to impound water but rather to divert water for power purposes.

The French Broad EMC currently purchases all of its power from Carolina Power and Light Co. The minimum demand is 10 megawatts for their interconnected system. All power produced by the Capitola project will be sold to customers of the French Broad EMC. The generating station will replace approximately 16 million kilowatt hours per year of power purchased from CP&L.

The existing dam, sluiceway, intake structure, intake canal retaining wall and powerhouse are estimated to have been built in 1910 by the Capitola Manufacturing Company, a cotton mill. In

1916 the power production was changed from direct hydro power to a hydroelectric facility with a capacity of 200 kilowatts. In 1945 the powerhouse was reconstructed and a vertical Leffel turbine was installed with a nominal capacity of 440 kilowatts. The existing power plant was operated by The French Broad EMC from 1945 to 1959 when it was decided that it would be more economical to purchase power than to continue operation of the power plant after the Turbine's main bearing was damaged in 1959. The dam itself is approximately 500 feet long and 8 feet high.

French Broad EMC proposed the project and they are now engaged in the lengthy process of licensing and certification necessary before

any construction can begin. Some of the required licenses and permits are: 404 Permit-U.S. Army Corps of Engineers, 401 Certification-North Carolina Division of Environmental Management, Certificate of Public Convenience and Necessity-N.C. Utilities Commission, Sedimentation Control Permit - N.C. Division of Land Resources, FERC license-Federal Energy Regulatory Commission.

It is hoped by 1983 the town of Marshall will have the timely distinction of a hydroelectric plant generating power from the French Broad River. Between then and now all questions and concerns involving everything from endangered species to recreation to historic buildings will

have to be addressed and answered.

Already the North Carolina Department of Archives and History has identified a building upon the site which may be eligible for the National Historic Register.

Negotiations are in progress to determine the final status of the building and any protective measures that may be necessary. The building, the "old Capitola Mill Building" was used from 1953 to 1980 as a meter repair shop by French Broad EMC.

All matters concerning the building should be resolved before the projected issuance date of the FERC license sometime during the late summer of 1981.



THE EXISTING SLUICEWAY at the old Capitola Dam site, built around 1910, will play an important part in the hydroelectric generating facility proposed by French Broad Electric Member-

ship Corporation. Once completed, the generating facility will replace nearly 16 million kilowatt hours per year purchased from Carolina Power and Light Company.

Madison Is Eligible For More CD Funds

Madison County has become an eligible applicant for Grant and Aid Assistance from the Department of Housing and Urban Development (HUD) under the Housing and Community Development Act of 1978. In accordance with the provisions under the act, the Madison County Housing Authority will hold a public hearing on Tuesday, Dec. 9 at 7 p.m. in the Madison County courthouse so county citizens can learn of proposed community development target areas and voice comments on the proposed projects.

Community Development Coordinator Sam Parker said he and Becky Williams of the Land-Of-Sky Regional Commission have toured 13 communities in Madison accompanied by residents of

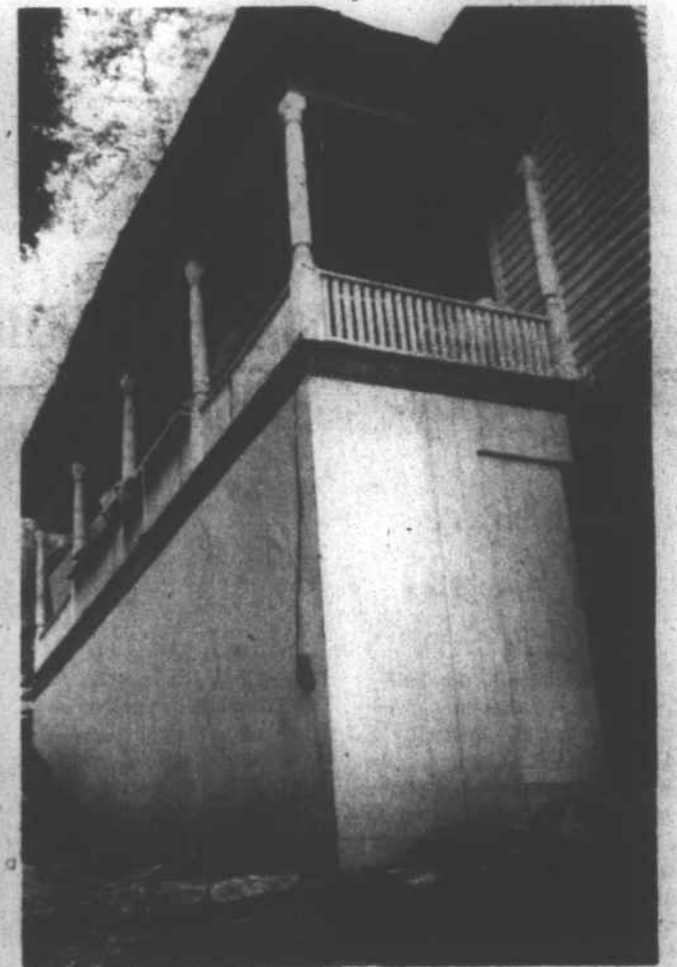
the communities to select target areas for application for the HUD funds.

The 13 communities under consideration for community development projects are: Walnut, Lonesome Mountain, Shutin, Lower and Upper Meadow Fork, Grapevine, East Fork, Beetree, Rectors Corner, Piney Grove, Sandy Mush, Sodom and Rice's Cove.

Parker said 90 percent of the housing in a target area must be substandard by HUD criteria before an area can be eligible for project funds. He said a decision will be made by Dec. 9 on which communities will be designated as target areas based on the community surveys recently conducted.



BEFORE AND AFTER—Work has begun on Mrs. Ella Baker's house as part of the Town of Marshall's Community Development project. The photo at right shows some of the preliminary work being done to the exterior



The Ella Baker Home

of the house. The rehabilitation project, funded through the U.S. Department of Housing and Urban Development, has provided 17 jobs according to Donald Ramsey, administrator of the Marshall project.

Wreck Claims Hot Springs Man

HOT SPRINGS—A one-car wreck on U.S. 25-70 approximately three miles north of Hot Springs resulted in the death of Billy Edward Holt, 22, a resident of Hot Springs.

Holt was dead on impact after the car hit a concrete bridge abutment at a high rate of speed Wednesday at 11.40 p.m., said Trooper Johnny Robinson of the Highway Patrol.

The driver, Jackie Gosnell, 20, also of Hot Springs, was in intensive care at Memorial Mission Hospital in Asheville

with head injuries and a broken neck, Robinson said.

Trooper Robinson said Gosnell, traveling south toward Hot Springs at a high rate of speed, lost control in a right-hand curve, crossed the center line, and hit the bridge on the wrong side of the road. Robinson said the car was going 70 to 75 miles per hour in a 55 mile-per-hour zone. The road was reportedly clear of ice.

As of Thursday night, no charges had been made regarding the wreck.

Couple Notified Of Attendance Laws

Family Prefers To Educate Child At Home

At its regularly scheduled December meeting, the Madison County Board of Education voted to notify Mr. and Mrs. Ronald Holloway by letter that their daughter had missed the maximum number of days permissible from a public school, and that they were in violation of the state's compulsory attendance law by not having the child enrolled in a Madison County school.

The Holloways had gone before the board at its Nov. 3 meeting to request that they be allowed to educate their nine-year-old child at home through the Home Study Institute course developed by the Seventh-day Adventist Church. The board took no action on the Holloway's request at that time, but referred them to officials in the state Department of Public Instruction to determine if the state recognized or approved the

home study course. The Holloways solicited the aid of Elder Herman Davis, an official in the North Carolina district of the Seventh-day Adventist Church who contacted Raleigh school officials on behalf of the Holloways. Davis said Monday that after

contacting state school board officials he had decided not to pursue the Holloway case under the present circumstances. Davis said state school officials cited the N.C. Attorney General's ruling which states "a parent does

(Continued on Page 2)

State Senator Visits Marshall School

State Senator James McClure Clarke visited the students and faculty at the Marshall Elementary School last week. Senator Clarke observed students during their classes and paid a special visit to Nancy Allen, Teacher of the Year for Madison County. Clarke spent some of his

time talking to teachers and teachers' aides asking them for ideas to take back to Raleigh about the needs of the students, the school and faculty.

Clarke also talked to R.L. Edwards, superintendent of Madison County schools. (Continued on Page 2)



THE MADISON HIGH SCHOOL MARCHING PATRIOTS BAND braved chilly winds and hard pavement to participate in the annual Asheville Christmas Parade on Nov. 26. The

band was one of 150 entries in the holiday season event sponsored by Asheville Merchants and the Chamber of Commerce.