

THE WAYNESVILLE MOUNTAINEER

Has More Paid-In-Advance Subscribers In Haywood County Than All Weekly Newspapers Combined

WAYNESVILLE, NORTH CAROLINA

Architect Gives Facts About Court House

Court House and Jail Chronology Given

STORY REGARD- G COURT HOUSE VEN BY ALLEN

Bitter Fight Waged
Over Selection of County
Seat in 1809.

PRESENT SITE OF WAYNESVILLE CHOSEN

es of Leaders in Coun-
At Time County Or-
ganized Given

(By W. C. Allen)

without a bitter factional fight
the location of the court house
was accomplished when the coun-
ty was organized in 1809. The com-
missioners appointed by the Legisla-
ture, John Stephenson, John Mont-
gomery, William Deaver, John Dob-
bison, John Davidson, Hollyman Battle,
John Bryson, to choose the site,
Felix Walker, John McFarland,
Thomas Lenoir, to erect the build-
ing and provide the money to pay
for it, had been warned not to
select the site at Mount Prospect,
the land of which was owned
by Robert Love who had of-
fered to donate the sites. The com-
missioners, however, disregarded the
warning and chose the site, which is
the town built upon and re-
lated to the present day.

objectors, however, were not
satisfied and would not acknowledge
the choice of Mr. A. L. Bramlett, a native
of the county now teaching in Indi-
ana, that he has seen the original
location either in the Historical
Museum at Raleigh or in the Library
of State University, which the op-
ponents of the location at Mount Pros-
pect to the Legislature to have
revision of the commissioners set
it is not known whether or
the State Legislature ever gave
serious consideration. The
story is as follows:

Honorable General Assembly:
The petition of the citizens of
Waynes County sheweth that this
county was divided from Buncombe
to the great satisfaction of
people of this section; releas-
ing from many incumbrances and
allowing us to perform what we
were to do in Buncombe County; we
have the laws of our country ad-
hered in our own vicinity.

Commissioners were also appoint-
ed to settle and sit on a place for a
court house and other public
buildings, which we fondly hoped
to be for our accommodation and
benefit. But the Commissioners
to our hopes and expecta-
tions and we conceive to an un-
equal distribution of common justice,
the county seat on the lands
of Robert Love near Richland creek.
The site selected is notoriously
to all to be in the South-West
of the population of the county,
in the center of a majority of
settlers.

Waynes county is mountainous, our
roads can only be made passable
by the valleys and along water
courses and our roads now estab-
lished cannot be made
the site on Robert Love's land
by the Commissioners unless
at variation and much out of
the way. It will be a great detriment
to the citizens at large.

do not offer to implicate the
Commissioners or to
other Commissioners be ap-
pointed from a more equal division
of the county, to settle and affix the
county to erect the court house
on public buildings.

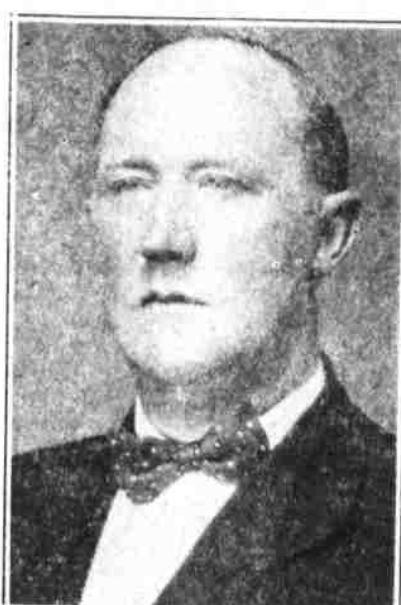
petition is about four feet long,
and to Mr. Bramlett, and the
petitioners are not given.
The names of the petitioners are
John Fullbright, Henry
Daniel Perry, Thos. Brookshire,
Fleming, Francis Rose,
Clark, Benjamin West, Will-
iam Davidson, John Stuart, Nathan
John Holland, William Burns,
Hanson, William Briggs,
Cachey, Thadrick Hyatt, John
Daniel Eston, Cally Jackson,
McCracken, James Stevenson,
Waine, David Scroggs, John
and on back page of this Sec.)

on this page made by
Studio.

County Commissioners



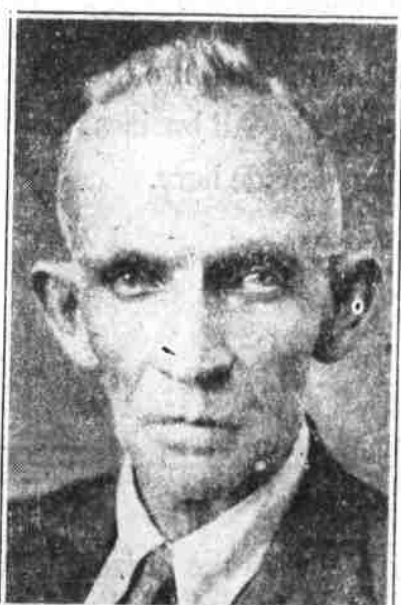
George C. Haynes



Jarvis H. Allison



Chairman R. T. Boyd



P. V. Massey



W. H. Henderson

ORIGIN, HISTORY OF COUNTY TOLD IN A BRIEF FORM

County Organized More
Than 123 Years Ago. Has
Made Steady Progress

FIRST COUNTY OFFICIALS NAMED

Farm and Manufactured
Products Exceed 17
Millions in 1928

(By W. C. Allen)

Waynes County is one of the aver-
age counties of North Carolina in
size, population, resources, wealth,
enterprise, education, and industrial
development. It is now one hundred
and twenty-three years old. It has
an area of 349,440 acres, of which
something less than fifty are in cul-
tivation in the production of corn,
wheat, oats, rye, hay, tobacco, and
other native products. There are by
the statistics of 1928 apple trees to
the number of 155,348. It is classed
as an industrial county because the
manufactured products in value far
exceed the value of all others. In
1928, the manufactured products of
Waynes County sold for \$12,197,180-
60, while the agricultural, including
orchards and live stock, were less
than five millions. In that year the
number of factories in the county of
every kind was twenty-eight; the
number of employees in industrial
works was 2,228; total wages paid
\$2,264,464.00; and total value added
to the raw materials by manufactur-
ing was \$4,814,486.00. The class of
manufacturing establishments is varied,
furniture and lumber.

In the one hundred and twenty-
three years of its existence, the coun-
ty has wonderfully advanced in all
of the important developments of civ-
ilization. When by the act of the
General Assembly of North Carolina
ratified on December 23, 1808, the
county was given separate existence
from Buncombe, it contained the total
number of 1,696,920 acres of land
with very little of it in cultivation.
By the formation of other counties
out of its original territory, Waynes
County has been much reduced in
acreage, but its population and wealth
have steadily increased. The story of
this achievement forms a most inter-
esting cross-section of the history of
North Carolina.

By the act erecting the county in
1808, two sets of commissioners were
empowered to select the site and to
construct the public buildings. One
set composed of John Stephenson,
John Montgomery, William Deaver,
John Dobson, Hugh Davidson, Holly-
man Battle, and John Bryson were
named in the legislative act to select
the site for the county seat and the
court house and jail. The other set
made up of Felix Walker, John Mc-
Farland, and Thomas Lenoir were
appointed to have the public buildings
erected and to manage the levying
and collection of taxes and other funds
that might be needed for the purpose.
(Continued on back page of this Sec.)

Architects



Willard G. Rogers



George N. Rhodes

Electrical Work Is Termed As Superior Job By Authorities

One of the outstanding jobs on the
new court house is the electrical
installation which was done by the City
Electric Company, of Charlotte, and
under the supervision of B. B. Mills,
foreman. The building is wired by
larger wire than the average build-
ing and instead of each room being
on just one single circuit, and in some
buildings as many as four rooms are
on one circuit, the new court house
has three circuits to each room.

The fixtures and materials used in
the wiring are Westinghouse, which
are considered by builders to be the
best that can be bought. Large trans-
formers carrying 2300 volts are in-
stalled in the basement of the build-
ing. The circuits leading from the

BUILDING WILL FILL COUNTY'S NEEDS 100 YEARS

Every Little Detail Carefully
Studied Out Before Being
Passed Upon.

COMMISSIONERS ARE PRAISED

Jail Built To Prevent Escap-
es and Mobs. Says
Mr. Rogers

(By Willard G. Rogers, architect)

Something like nine months have
elapsed, since the Commissioners of
Waynes County signed the contracts,
which launched the building of her
\$240,000.00 Court House, which stands
today a monument and a credit to
every citizen of Waynes county, and
the Board of Commissioners, setting
forth an example of thrift, and civic
pride, which will stand as an example
to every county in the state whose
equipment does not measure up to
such a standard.

The building, as it stands, will
provide for the county's needs for years
to come, and in its construction only
the best of every kind of material was
used, and all has been supervised by
the architects, each day since it was
started, added to the faithful coopera-
tion of all who were connected with
the several contracts, and those furn-
ishing material a result has been at-
tained which gives to the county a
building which has no superior for
the amount invested.

The building has been constructed
of North Carolina granite, with orna-
mental cast stone for trimmings, cor-
nices, columns and frieze, and all ma-
terial used has been where possible
the products of North Carolina, and
where it could not be obtained in the
state, it was bought through agents
who reside in the state and many from
Waynes county.

The entrance facade is designed in
the Doric order of architecture, and
the gable and frieze are supported by
four large Doric columns. In the
tympantum of the gable a symbol of
the law, and the bounties of the coun-
ty are shown.

When entering the building, one is
confronted with the beauty of the
travertine marble wainscot, and the
venetian art tile, all blended together
to show a pleasant vista as one looks
down the corridor, on the left and
right the grand stair case of marble
starts up to the second story, this
stair is equipped with brass hand rail,
wrought balusters, finished in verde
antique.

This entrance has solid hollow
bronze doors, and the terrace on the
front is laid in red tile, staged with
solid granite steps for the approach,
and each buttress has placed on same
a large floor light fixture.

On the first floor is located all the
offices connected with the County's
daily business, such as a room for the
County Register of Deeds, County
Commissioners' room, Board of
Health, County Superintendent, Home
Demonstration, women's rest room,
Auditor and Treasurer, Sheriff, and
doors throughout, except on some
places where necessities are concerned,
are of stainless steel as trim for same,
and present a pleasing appearance.

The rooms on the top of Court, as
well as the register of Deeds has
a double vault, in the basement is
old records, and on the first floor for
recent ones, all are provided with
heavy vault doors of most approved
make. Other offices are also provid-
ed with vaults of less size equipped
with combination locks.

The second story contains the large
court room, on which much thought
has been expended, for the purpose
of securing the best results in the
beauty of decoration, and the most
best has been reached in every de-
tail. The balcony, to name, is reached from
third floor on either end, and is ven-
tilated from above with plaster grills.

The jury boxes, and the judge's
stand are made to harmonize in their
detail with the rest of the room. Di-
rectly behind the judge's stand,
there has been designed a decora-
tive which has the Ten Command-
ments in abbreviated form on white
marble tablets, five on one side and
five on the other side of a statue of
Goddess of Justice blindfolded, and
holding in her left hand the per-
fectly balanced scales of justice, and
in her right the sword, which guar-
(Continued on back page of this Sec.)

transformers only carry 110 and 220
volts.

One of the most modern features
is the two spot lights on the front of
the building which will illuminate the
front of the building at night.

All the materials used are absolute
modern in every respect, according to
Mr. Mills, and will last as long as the
building stands, which is estimated
will be many years after the present
generation ceases to use the court
house.

Willard G. Rogers

Wilder Building

Associated Architects

Charlotte, North Carolina

Geo. N. Rhodes

Builder's Building

The New Court House, as completed, was designed by the
above named Architects, and during it's entire construction had
the daily supervision of one or the other of said architects. This
feature being unusual in this particular, assuring a complete
understanding of the plans and specifications by all trades, at all
times.

The architects wish to express their deep appreciation of the
fine spirit of cooperation by the County Board of Commissioners,
and citizens, as well as all contractors and sub contractors, all
of which has resulted in as near a 100 per cent building as is pos-
sible by human endeavor.