

### ery Shell To le Planes Steel Tape

INGTON—Development  
mystery parachute, shell,  
trap airplanes in a mesh  
cables almost five miles  
earth, was revealed by  
military experts.  
shell, which was invent-  
American, has found its  
France, and it is expected  
will be put into practical  
the Germans whenever  
large-scale air  
art over England and the  
front.

is, who explained that the  
reason has been known to  
States army for almost  
years, and "it actually works  
that it makes such anti-  
defense as the balloon barbed  
by Great Britain, look  
like of the horse-and-buggy

shell, described as of about  
caliber and similar to reg-  
es except that it has an  
y long jacket, is fired from  
regular fashion. As it  
the muzzle, it rises as a  
projectile until it hits the  
atide. At that point the  
the shell falls away from  
it, pulling out hundreds of  
steel tape fastened to a

slowly drifting tape is de-  
to the propellers of any air-  
that may strike it. Officials  
that may strike it. Officials  
rapid-fire barrage of these  
planes would make a network  
plane could pass through.  
experts said the shells had  
range up to 25,000 feet,  
ough to wreck any accuracy  
ing roads. Although definite  
of the new shell were with-  
the grounds of military se-  
it was learned that the  
in the new weapon is in the  
of the tape.

hundreds of feet of the steel  
would tightly in the elon-  
gation of the shell. This  
is evenly under the weight  
nose of the projectile as it  
loose from the jacket, thus  
ing it to travel downward  
any straight line.

### RING ONE-TON SHELL

aiming of a 16-inch coast-  
gun, which can effectively  
a 2,100-pound projectile a  
range of 26 miles, is based on  
factors, such as the target's  
size, direction and speed, cur-  
vature and rotation of the earth  
and the direction and velocity of  
wind.  
blowing at 20 miles an  
a cross wind alone can carry  
shell as much as 303 yards off  
course during the 101 seconds  
it is in the air.—Collier's.

### BLOT OUT SWASTIKA

MA, Ia.—The Mesquakie In-  
dians have painted out the swas-  
tikas. The Indian swas-  
tikas are identical to the Nazi em-  
blem but developed much earlier.  
The Indians painted on pottery, wov-  
en beadwork and carved on  
stone for centuries in North,  
Central and South America.

### Mountain Joe ...



Day is always a day I  
forward to—it is the beginning  
of the season, and a day set apart  
in recognition to the working man.

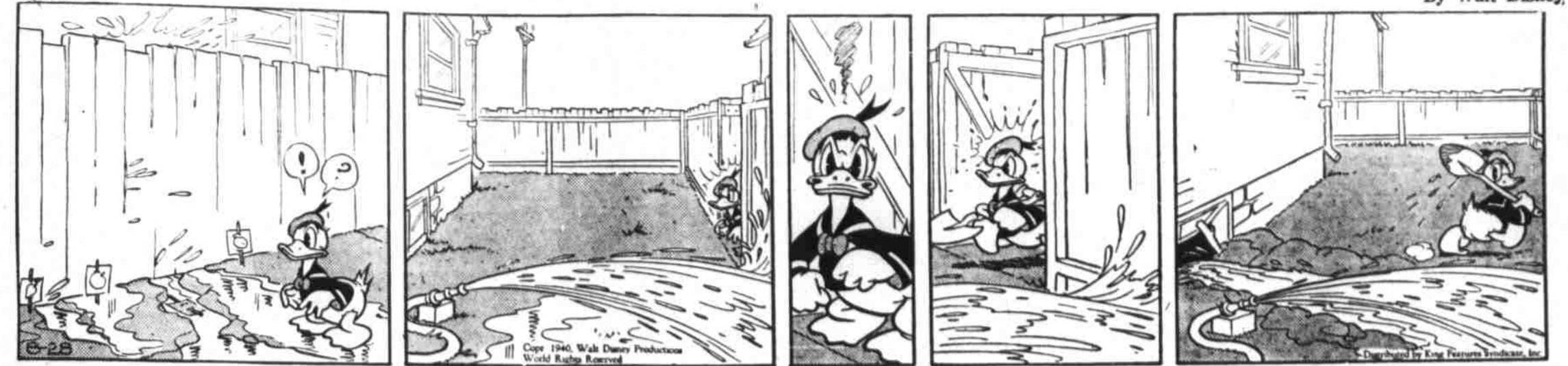
Wood County duty, and right-  
sets apart Labor Day as a  
day. Some of our neighbor-  
counting forgo this day, and  
as just another day.

am proud that I live in a coun-  
that appreciates its working  
men. I am proud that such  
as Burgin Brothers have  
made it possible for the working  
man to have the best at no higher  
price, although they extend credit  
to the man with the dinner pail.

Labor Day is a memorable  
day. Let us observe it in that  
spirit. And nowhere will you find  
more loyal and co-operative  
men than the working man than at  
Burgin Brothers.

**BURGIN BROTHERS**  
WE DELIVER  
334 At The Depot

### DONALD DUCK



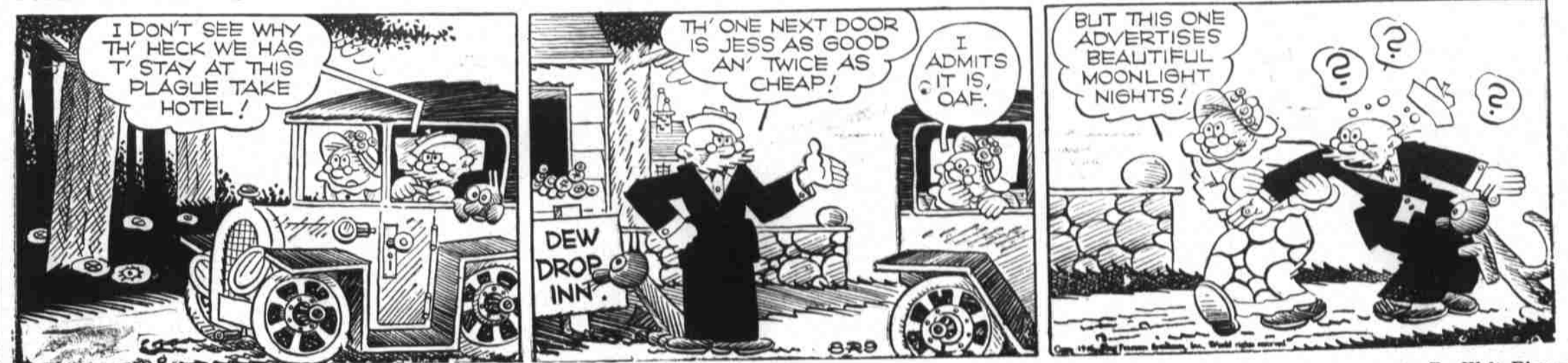
By Walt Disney

### SKIPPY



By Perry L. Crosby

### POLLY AND HER PALS



By Walt Disney

### DONALD DUCK



By Perry L. Crosby

### SKIPPY



### POLLY AND HER PALS



<p>—212° Boiling Point —143½° Pasteurization —140° Tuberculosis Killed —137° Typhoid Killed —133° Septic Sore Throat —130° Diphtheria Killed</p>	<p>Pasteurized Milk Is SAFE</p>	<p>We Work Hand In Hand With District, State, And Federal Health Officers, And Are Proud Of Our "HONOR ROLL RATING." <b>Pet Dairy Products Co.</b></p>
----------------------------------------------------------------------------------------------------------------------------------------------------------------------	---------------------------------------------	--------------------------------------------------------------------------------------------------------------------------------------------------------------------