

Growth Of Cruso REA Project Has Been Steady

Incorporation Now
Extends 167 Miles
Electric Lines

Approximately 500 Patrons
Now Served With Electric Power By Unit

A group of progressive citizens in the East Fork area of the county, who were connected with the school started a movement in 1937 to have a rural electric project in their section. As a result, the Cruso Mutual Electric Company was organized by the citizens of East Fork, Pigeon and Cecil townships. Application was made to the Rural Electrification Administration in Washington for an allotment of \$42,000 for the development of a rural line to the communities.

After months of untiring work on the part of the sponsors of the project in unraveling the "red tape" that is so often bound about such projects, the allotment was granted, and the money was available in May, 1939.

Mrs. L. Pless was elected president of the company with E. B. Rickman, secretary, Carter Trull, superintendent, and T. LeGwyn, co-ordinator.

Following in addition to the president and secretary composed the board of directors: Ira H. Cogburn, Will Poston, Watson R. P. Grogan, Mrs. E. Deaver, A. Cogburn, of Canton, and an attorney for the company.

Time was lost after the notification of the approval and allotment of funds by the administration in Washington, by the backing of the project in getting all necessary arrangements perfected with the work.

Rights-of-way were secured and breaking time. Within a while more than 200 subscribers were signed up for electric power.

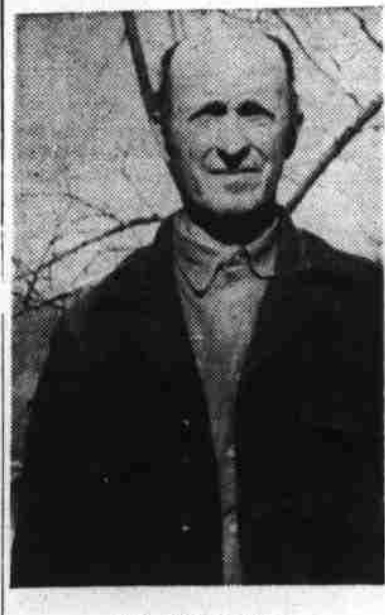
Temporary offices were set up at Cruso after the official allotment of the \$42,000 with T. Lenoir, who was one of the original supporters of the movement.

Construction work was done by the Melvin F. Burgess Company, of Baltimore, that has also completed many other rural electric lines in the state.

Representing the Rural



DEWEY L. PLESS



IRA COGBURN



MRS. E. B. RICKMAN



MARY DAVIS



CHAS. B. MCCRARY



CARTER OSBORNE



J. C. MOORE

Maple Grove on the fifth Sunday morning and at Elizabeth Chapel on Thursday evening of passion Week.

Japan's Variety of Insects
The insect variety of Japan corresponds, roughly, with that of the temperate regions of Europe.



R. E. SENTELLE, legal advisor for the Cruso Electric Membership Corp., said this week: "The REA is bringing light and power to rural homes; the lights are making home-life more cheerful and bright and causing people to enjoy staying at home at night. The electrical power through electrically operated radios is bringing enter-

Mrs. I. J. Brown's Nephew Burned When Attempting To Rescue Man From Fire

News has been received by relatives here that Sheirl Brown, resident of Pipe Bluff, Wyo., grandson of Charles A. Lowery, of Franklin and nephew of Mrs. I. J. Brown, nearly lost his life in attempting to rescue a man from a fire.

The man was trapped in a potato storage cellar on the farm of Walter Brown, father of the young Brown. It was reported that when Brown reached the outside of the storage cellar, his body was a human torch, his clothing ablaze from head to foot. He was burned so badly that his condition was critical for a time. He is now reported to be steadily improving.

Alaska's Oil Fields
Alaska contains a number of known oil fields, under government control.

Original Definition of Acre
An acre was originally defined as the area a yoke of oxen could plow in a day.

tainment to country homes and through electrically operated labor saving equipment and machinery is greatly reducing the drudgery and burdens of home and farm life."

Electrification Administration in Washington with Harry Dewar, at the time district REA engineer, and John Swann, local engineer, were in charge of the work. Arrangements were made to buy power from the Carolina Power and Light Company, contacting the lines at Rickman's store.

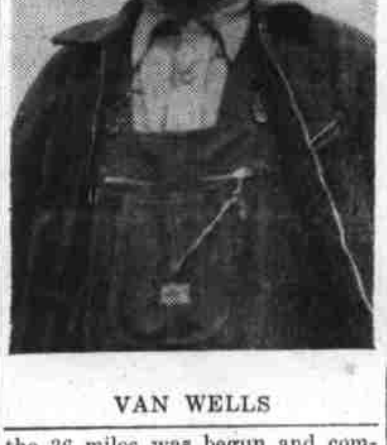
Around sixty men, with local labor used where possible were employed and the construction of



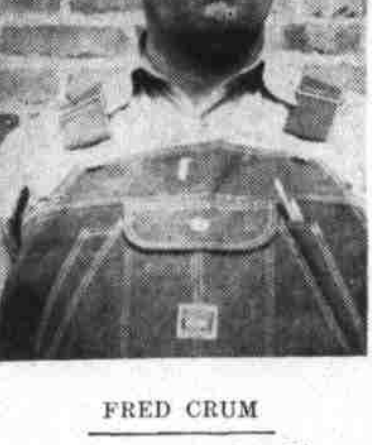
VAN WELLS



FRED CRUM



Rev. C. O. Newell, Pastor.



D-wood Methodist Circuit Activities

The board of stewards for the charge met at the Dellwood church, March 12, with Mrs. W. D. Ketner, charge lay leader, presiding. Mrs. Vincent Henry reported from the Maggie church, Chancey Palmer from the Maple Grove church, and Mrs. Ketner from Dellwood.

Mrs. Sam Queen was made chairwoman of a committee to do some minor repairs on the parsonage. Mrs. Ketner reported on the new publication, "The Methodist Layman." Rev. Newell gave a report of the Spiritual Mobilization Day in Asheville on March 11. A social hour followed.

On March 20, the woman's society of the Dellwood church met with Mrs. Newell. Mrs. Ned Moody presided and Mrs. Newell had charge of the program. Mrs. Newell will represent this society at Greensboro. She is also a conference chairman on the Status of Women committee.

The Sacrament of the Lord's Supper will be observed at Maggie the fourth Sunday morning, at the annual conference in Greensboro March 26-28.

On March 20 the woman's society of the Dellwood church met with Mrs. Newell. Mrs. Ned Moody presided and Mrs. Newell had charge of the program. Mrs. Newell will represent this society at Greensboro. She is also a conference chairman on the Status of Women committee.

The Sacrament of the Lord's Supper will be observed at Maggie the fourth Sunday morning, at

the 36 miles was begun and completed in a remarkably short time.

On August 22nd, 1939, the lines on the East Fork were energized, and on the West Fork and Cecil townships on August the 30th. Oscar Briggs, of Waynesville, was elected superintendent.

In the early part of 1940, a movement was started to extend the lines into other sections of the county. The B. C. Van Nort Company, of Charlotte, was employed as engineers to make the preliminary survey.

An additional project was set up for 127 miles and with approximately 500 subscribers. Plans of specifications were completed. The proposed extension covered the following township: Iron Duff, Clyde, Ivy Hill, Jonathan Creek, Fines Creek, and Crabtree.

Application was made to the administration in Washington for \$135,000 in August. A new contract was made with the Carolina Power and Light Company, and a sub-station was erected at Clyde and the offices of the company were moved from Woodrow to Clyde.

Charlie McCrary has served as co-ordinator on the extension work securing rights-of-way. Joe Howell served for a period as acting superintendent.

After funds were available last fall the contract was given to Melvin F. Burgess Construction Company and work was started at once. The first 20 miles of the new lines were energized, the section from Cruso to Clyde, on December 16. The last lines extended to Panther Creek were turned on February 5th.

The company with its extended lines now known as the Cruso Membership Corporation with the following officers: president, Dewey L. Pless, and secretary and treasurer, Mrs. E. B. Rickman, vice president, Carter Osborne. In addition members of the board of directors include: Ira H. Cogburn, Van Wells, Mary Davis, Fred Crum, Chas. B. McCrary, and Mrs. Bonnie M. Clark. R. E. Sentelle is at-

Electricity ON THE FARM

MEANS Bigger Profits

USING Electricity on your farm will increase profits because it speeds up production and chores, thereby saving valuable time and cutting labor costs. No matter what the work you are doing may be—milking, pumping and carrying water, grinding and mixing feeds and seeds, house-keeping, poultry raising—there is a quicker and less expensive way of doing it by using electricity.

We Congratulate REA

Pet Dairy Products Company has always been behind any movement that was for the betterment of this section. We feel that the coming of REA into Haywood brings on a better era for the rural people. It is truly an era in which all other similar programs will be given more momentum with which to go forward faster and better. We are proud that we operate in a county where the people are so progressive and energetic.

See our booth at the Armory Friday and Saturday - There you will see how modern Dairying can pay big Dividends.

WE WELCOME THE OPPORTUNITY TO DISCUSS WITH FARMERS AND DAIRYMEN SOME OF THE NEW EQUIPMENT NOW AVAILABLE FOR GREATER PROFITS

You Can Always Depend On Our Service!

Ask For Pet Dairy Products By Name!

Pet Dairy Products Co.

Phone 10 Waynesville

It's New! Revolutionary! -and Exclusive to Kelvinator!

Food Guarded by Glass in this Cold-mist Freshener

With All-Glass Shelves

AND SEPARATE COOLING COILS IN THE WALLS!

Extra! In addition to the coils that freeze ice, there's a separate set of cooling coils concealed in the walls of the food compartment—maintaining correct temperature and humidity throughout.

129.50*

Get More - Get KELVINATOR

C. N. ALLEN CO.

HAZELWOOD